

# Converting Colors

Decimal(12868289)

Have a look what the booklet for  
Decimal(12868289) contains.

<b>Decimal(12868289)</b> .....	3
<i><b>Conversions</b></i> .....	4
<i><b>Details</b></i> .....	6
<i><b>Harmonies</b></i> .....	11
<i><b>Previews</b></i> .....	23
<i><b>Color Blindness Simulation</b></i> .....	26
<i><b>CSS Examples</b></i> .....	29

# **Color**

**Decimal(12868289)**

# Conversions

## Conversions Part 1

<b>Format</b>	<b>Color</b>
Hex	C45AC1
RGB	196, 90, 193
RGB Percent	77%, 35%, 76%
CMY	0.2314, 0.6471, 0.2431
CMYK	0.00, 0.54, 0.02, 0.23
HSL	302°, 47%, 56%
HSV	302°, 54%, 77%
XYZ	36.0468, 22.8983, 52.9720
YIQ	133.4360, 30.1130, 54.5050

# Conversions

## Conversions Part 2

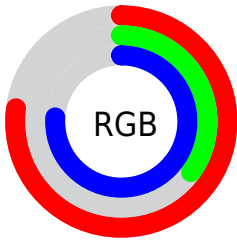
<b>Format</b>	<b>Color</b>
<a href="#">RYB</a>	<a href="#">196, 90, 193</a>
Decimal	<a href="#">12868289</a>
CIELab	<a href="#">54.97, 56.03, -34.94</a>
CIELCh	<a href="#">55, 66.028, 328.050</a>
Yxy	<a href="#">22.8983, 0.3221, 0.2046</a>
Android (android.graphics.Color)	<a href="#">4291058369</a> ( <a href="#">0xFFC45AC1</a> )
YUV	<a href="#">133.4360, 29.3651, 54.8686</a>
Hunter-Lab	<a href="#">47.8522, 50.7215, -32.1370</a>

# Details

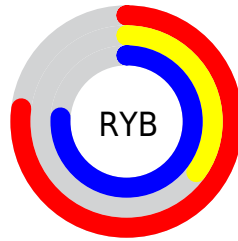
The Decimal color **12868289** is a light color, and the websafe version is hex **CC66CC**. The color can be described as light muted magenta. A complement of this color would be **5948509**, and the grayscale version is **8750469**.

A 20% lighter version of the original color is **16749050**, and **9183627** is the 20% darker color. If you saturate the color by 10%, you get **12863168**, and if you desaturate by 10%, it is **12873410**.

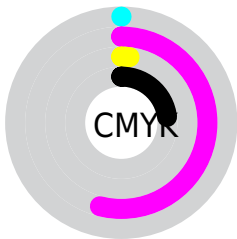
# Distribution



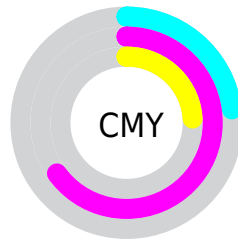
- Red (77%)
- Green (35%)
- Blue (76%)



- Red (77%)
- Yellow (35%)
- Blue (76%)



- Cyan (0%)
- Magenta (54%)
- Yellow (2%)
- Black (23%)



- Cyan (23%)
- Magenta (65%)
- Yellow (24%)

# Brightness & Saturation Gradients

These gradients show how the Decimal color 12868289 changes by changing the brightness by 10 percent. The first figure shows a shift by +10% for each color and the second figure -10%.

Similar to the brightness gradients but the following saturation gradients show a change of the Decimal color 12868289 by changing the saturation by 10% instead.



 12868289

 12868289

16777215

 10960806

 16749050

 9183627

 16756223

 7340145

 16763391

 5570648

 16770815

 3932224

 2293802

 275

 0

 12868289

 12868289

12863168

12873410

12858304

12878274

12853183

12883395

12848319

12888259

12845246

12893380

12898500

12903365

12908485

12910534

# Harmonies

## Analogous

The Analogous color harmony consists of three colors that are next to each other on the color wheel.



7960297



12868289



15025802

# Triad

The Triadic color harmony groups three colors that are evenly spaced from another and form a triangle on the color wheel.



12868289



10584064



40376

# Complementary

The Complementary color scheme is a pair of colors which are on the opposite of each other on the color wheel.



12868289



5948509

# Split Complementary

Split-complementary colors differ from the complementary color scheme. The scheme consists of three colors, the original color and two neighbors of the complement color.



40318



12868289



6918144

# Square

The Square scheme is like the rectangle color scheme, but the four colors are evenly spaced on the color wheel.



12868289



13395997



39235



39140

# Rectangle

The Rectangle color scheme consists of four colors that form a rectangle on the color wheel.



12868289



15288676



39235



40613



# Sweetspot

The Sweet Spot groups the original color and five complimentary colors.



12868289



16766718



6052548



8415103



0



8421504



# Same Dimension

The Same Dimension uses a secret algorithm to generate beautiful new colors.



12868289



16734714



12868237



6379361



10551452



2162720



# Inverse Universe

The Inverse Universe completely reimagines the original color for something new.



12868289



16734714



5948561



6379361



10551452



2162720



# Previews

## White Background



This preview shows how the Decimal color 12868289 looks on a white background.

## Color Contrast Check

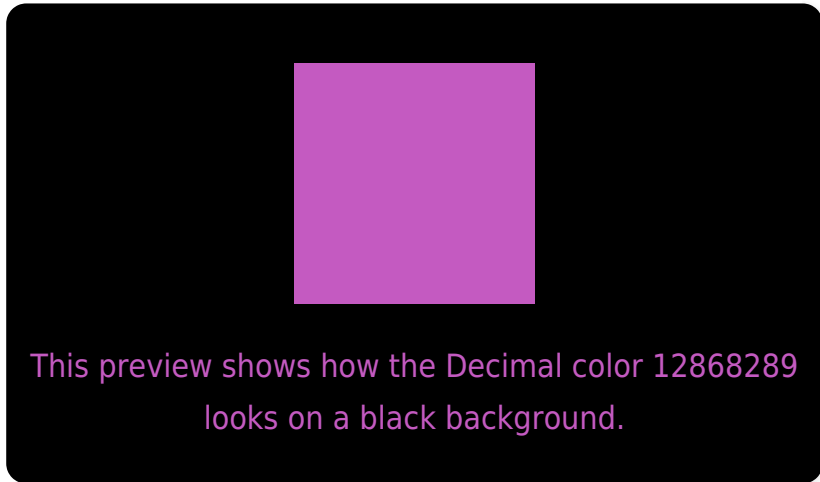
Large Text (above 18pt) WCAG AA ✓ Pass

Any Text WCAG AA ✗ Fail

Large Text (above 18pt) WCAG AAA ✗ Fail

Any Text WCAG AAA ✗ Fail

# Black Background



## Color Contrast Check

Large Text (above 18pt) WCAG AA ✓ Pass

Any Text WCAG AA ✓ Pass

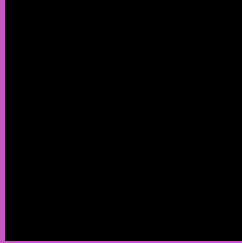
Large Text (above 18pt) WCAG AAA ✓ Pass

Any Text WCAG AAA × Fail

If you want to check with other color combinations, try the [Color Contrast Checker](#).



## Decimal 12868289 Background



This preview shows how black text looks on a background with the Decimal color 12868289.

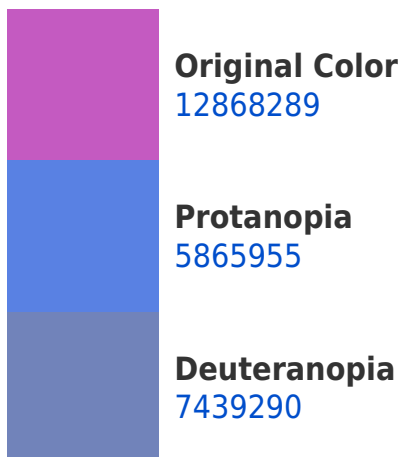


This preview shows how white text looks on a background with the Decimal color 12868289.

# Color Blindness Simulation

Color vision deficiency is a very complex topic, and I could not describe the different causes any better than Wikipedia does, so if you want to learn more, you should check out their [article about color blindness](#).

## Dichromacy





**Tritanopia**  
12283253

# Trichromacy



**Original Color**  
12868289



**Protanomaly**  
8418263



**Deuteranomaly**  
9401533



**Tritanomaly**  
12478097

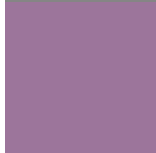
# Monochromacy



**Original Color**  
12868289



**Achromatopsia**  
8750469



**Achromatomaly**  
10253723

# CSS Examples

## Text

The CSS property to change the color of the text to Decimal 12868289 is called "color". The color property can be set on classes, ids or directly on the HTML element.

This example shows how text in the color #C45AC1 looks like.

```
.text, #text, p{  
    color:#C45AC1  
}
```

If you want to add a text shadow in that color use the text-shadow property, you can generate a text shadow directly with our [CSS Text Shadow Generator](#).

Here you see how black text with a 4 pixel #C45AC1 colored shadow looks like.

```
.shadow{ text-shadow: 4px 4px 2px #C45AC1
}
```

## Border

The CSS property to change the border of an element to Decimal 12868289 is called "border". The border property can be set on classes, ids or directly on the HTML element.

This example shows the color as border, it can be applied via the CSS property "border" or "border-color".

```
.border, #border, table{ border:4px solid
#C45AC1 }
```

If only the border color should be changed use the property `border-color`.

```
.border{ border-color:#C45AC1 }
```

If you want to add a box shadow in that color use:

Here you see how a box with a 4 pixel #C45AC1 colored shadow looks like.

```
.boxshadow{ -moz-box-shadow:4px 4px 4px  
4px #C45AC1; -webkit-box-shadow:4px 4px  
4px 4px #C45AC1; box-shadow:4px 4px 4px  
4px #C45AC1 }
```

# Background

The CSS property to change the background color of an element to Decimal 12868289 is called "background". The background property can be set on classes, ids or directly on the HTML element.

```
.background, #background, body{  
background:#C45AC1 }
```

If only the background color should be changed can be used:

```
.background{ background-color:#C45AC1 }
```

This example shows the color as background, it is applied via the CSS property "background".

To optimize and compress your CSS code, you can use our [online CSS compressor and optimizer](#) based on csstidy. If you want to create a linear or radial gradient as background or border, check our [CSS Gradient Generator](#).



Hey! You found this booklet interesting? Support Converting Colors with the new Membership Option!

The pro membership hides all ads, plus gives you double the colors in the color bucket, and more awesome pro features!

**[Learn more, Memberships starting at \\$2.50/m!](#)**

**Follow me  
on Twitter!**

@ConvertingColor