

Converting Colors

Decimal(12876663)

Have a look what the booklet for
Decimal(12876663) contains.

Decimal(12876663)	3
<i>Conversions</i>	4
<i>Details</i>	6
<i>Harmonies</i>	11
<i>Previews</i>	23
<i>Color Blindness Simulation</i>	26
<i>CSS Examples</i>	29

Color

Decimal(12876663)

Conversions

Conversions Part 1

Format	Color
Hex	C47B77
RGB	196, 123, 119
RGB Percent	77%, 48%, 47%
CMY	0.2314, 0.5176, 0.5333
CMYK	0.00, 0.37, 0.39, 0.23
HSL	3°, 39%, 62%
HSV	3°, 39%, 77%
XYZ	33.1777, 27.2336, 20.9607
YIQ	144.3710, 44.7920, 14.2320

Conversions

Conversions Part 2

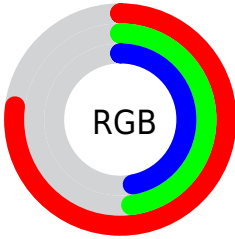
Format	Color
R_{YB}	196, 123, 119
Decimal	12876663
CIE _{Lab}	59.19, 27.96, 14.16
CIE _{LCh}	59, 31.337, 26.856
Yxy	27.2336, 0.4077, 0.3347
Android (android.graphics.Color)	4291066743 (0xFFC47B77)
YUV	144.3710, -12.5079, 45.2786
Hunter-Lab	52.1858, 22.1581, 12.7159

Details

The Decimal color **12876663** is a dark color, and the websafe version is hex **CC6666**. A complement of this color would be **7848132**, and the grayscale version is **9474192**.

A 20% lighter version of the original color is **16756907**, and **9193799** is the 20% darker color. If you saturate the color by 10%, you get **12871779**, and if you desaturate by 10%, it is **12881547**.

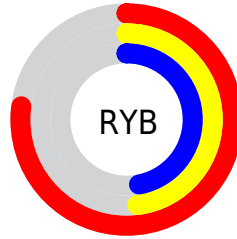
Distribution



Red (77%)

Green (48%)

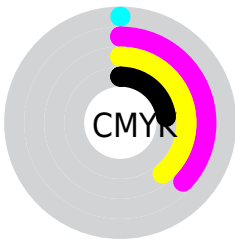
Blue (47%)



Red (77%)

Yellow (48%)

Blue (47%)

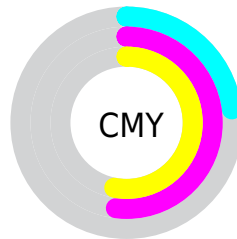


Cyan (0%)

Magenta (37%)

Yellow (39%)

Black (23%)



Cyan (23%)

Magenta (52%)

Yellow (53%)

Brightness & Saturation Gradients

These gradients show how the Decimal color 12876663 changes by changing the brightness by 10 percent. The first figure shows a shift by +10% for each color and the second figure -10%.

Similar to the brightness gradients but the following saturation gradients show a change of the Decimal color 12876663 by changing the saturation by 10% instead.

 12876663

 12876663

16777215

 11035230

 16756907

 9193799

 16764102

 7418160

 16771298

 5642779

 3998209

 2490369

 0

 12876663

 12876663

 12871779

 12881547

 12867152

 12886174

 12862268

 12891058

 12857641

 12895685

 12852757

 12900569

 12848129

 12905197

 12847616

 12910079

 12910591

Harmonies

Analogous

The Analogous color harmony consists of three colors that are next to each other on the color wheel.



12679826



12876663



12157537

Triad

The Triadic color harmony groups three colors that are evenly spaced from another and form a triangle on the color wheel.



12876663



6789744



6525637

Complementary

The Complementary color scheme is a pair of colors which are on the opposite of each other on the color wheel.



12876663



7848132

Split Complementary

Split-complementary colors differ from the complementary color scheme. The scheme consists of three colors, the original color and two neighbors of the complement color.



3578300



12876663



4496779

Square

The Square scheme is like the rectangle color scheme, but the four colors are evenly spaced on the color wheel.



12876663



8885341



2530726



9341119

Rectangle

The Rectangle color scheme consists of four colors that form a rectangle on the color wheel.



12876663



11307353



2530726



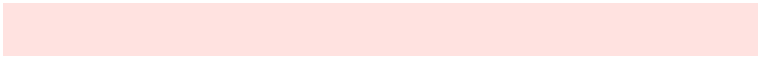
5477828

Sweetspot

The Sweet Spot groups the original color and five complimentary colors.



12876663



16769760



12875712



8417134



0



8421504

Same Dimension

The Same Dimension uses a secret algorithm to generate beautiful new colors.



12876663



16747911



12886391



6379607



10553344



2163200

Inverse Universe

The Inverse Universe completely reimagines the original color for something new.



7848132



8911359



7838404



5726305



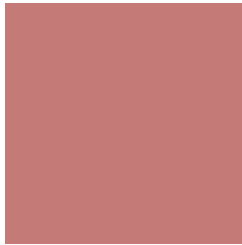
39073



7969

Previews

White Background



This preview shows how the Decimal color 12876663 looks on a white background.

Color Contrast Check

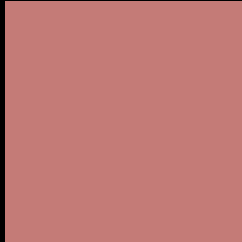
Large Text (above 18pt) WCAG AA ✓ Pass

Any Text WCAG AA × Fail

Large Text (above 18pt) WCAG AAA × Fail

Any Text WCAG AAA × Fail

Black Background



This preview shows how the Decimal color 12876663 looks on a black background.

Color Contrast Check

Large Text (above 18pt) WCAG AA ✓ Pass

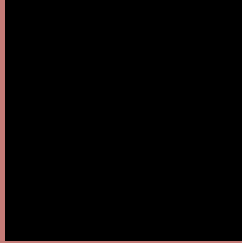
Any Text WCAG AA ✓ Pass

Large Text (above 18pt) WCAG AAA ✓ Pass

Any Text WCAG AAA × Fail

If you want to check with other color combinations, try the [Color Contrast Checker](#).

Decimal 12876663 Background



This preview shows how black text looks on a background with the Decimal color 12876663.



This preview shows how white text looks on a background with the Decimal color 12876663.

Color Blindness Simulation

Color vision deficiency is a very complex topic, and I could not describe the different causes any better than Wikipedia does, so if you want to learn more, you should check out their [article about color blindness](#).

Dichromacy





Tritanopia
12941698

Trichromacy



Original Color
12876663

Protanomaly
10913661

Deuteranomaly
11633781

Tritanomaly
12941950

Monochromacy



Original Color
12876663

Achromatopsia
9474192

Achromatomaly
10717319

CSS Examples

Text

The CSS property to change the color of the text to Decimal 12876663 is called "color". The color property can be set on classes, ids or directly on the HTML element.

This example shows how text in the color #C47B77 looks like.

```
.text, #text, p{  
  color:#C47B77  
}
```

If you want to add a text shadow in that color use the text-shadow property, you can generate a text shadow directly with our [CSS Text Shadow Generator](#).

Here you see how black text with a 4 pixel #C47B77 colored shadow looks like.

```
.shadow{ text-shadow: 4px 4px 2px #C47B77  
}
```

Border

The CSS property to change the border of an element to Decimal 12876663 is called "border". The border property can be set on classes, ids or directly on the HTML element.

This example shows the color as border, it can be applied via the CSS property "border" or "border-color".

```
.border, #border, table{ border:4px solid  
#C47B77 }
```

If only the border color should be changed use the property `border-color`.

```
.border{ border-color:#C47B77 }
```

If you want to add a box shadow in that color use:

Here you see how a box with a 4 pixel #C47B77 colored shadow looks like.

```
.boxshadow{ -moz-box-shadow:4px 4px 4px  
4px #C47B77; -webkit-box-shadow:4px 4px  
4px 4px #C47B77; box-shadow:4px 4px 4px  
4px #C47B77 }
```

Background

The CSS property to change the background color of an element to Decimal 12876663 is called "background". The background property can be set on classes, ids or directly on the HTML element.

```
.background, #background, body{  
background:#C47B77 }
```

If only the background color should be changed can be used:

```
.background{ background-color:#C47B77 }
```

This example shows the color as background, it is applied via the CSS property "background".

To optimize and compress your CSS code, you can use our [online CSS compressor and optimizer](#) based on csstidy. If you want to create a linear or radial gradient as background or border, check our [CSS Gradient Generator](#).

Hey! You found this booklet interesting? Support Converting Colors with the new Membership Option!

The pro membership hides all ads, plus gives you double the colors in the color bucket, and more awesome pro features!

[Learn more, Memberships starting at \\$2.50/m!](#)

**Follow me
on Twitter!**

@ConvertingColor