

Converting Colors

Decimal(12880493)

Have a look what the booklet for
Decimal(12880493) contains.

Decimal(12880493)	3
<i>Conversions</i>	4
<i>Details</i>	6
<i>Harmonies</i>	11
<i>Previews</i>	23
<i>Color Blindness Simulation</i>	26
<i>CSS Examples</i>	29

Color

Decimal(12880493)

Conversions

Conversions Part 1

Format	Color
Hex	C48A6D
RGB	196, 138, 109
RGB Percent	77%, 54%, 43%
CMY	0.2314, 0.4588, 0.5725
CMYK	0.00, 0.30, 0.44, 0.23
HSL	20°, 42%, 60%
HSV	20°, 44%, 77%
XYZ	34.6137, 31.0168, 18.6305
YIQ	152.0360, 43.8770, 3.2770

Conversions

Conversions Part 2

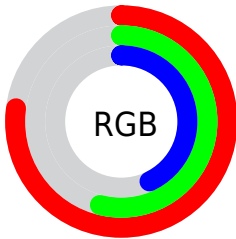
Format	Color
RYB	196, 153, 109
Decimal	12880493
CIELab	62.52, 18.60, 24.35
CIElCh	63, 30.643, 52.621
Yxy	31.0168, 0.4108, 0.3681
Android (android.graphics.Color)	4291070573 (0xFFC48A6D)
YUV	152.0360, -21.2167, 38.5564
Hunter-Lab	55.6928, 13.4776, 19.1511

Details

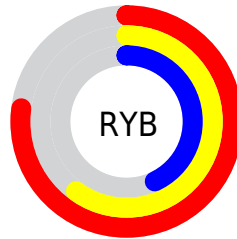
The Decimal color **12880493** is a dark color, and the websafe version is hex **CC9966**. A complement of this color would be **7186372**, and the grayscale version is **10000536**.

A 20% lighter version of the original color is **16695457**, and **9197629** is the 20% darker color. If you saturate the color by 10%, you get **12877145**, and if you desaturate by 10%, it is **12883841**.

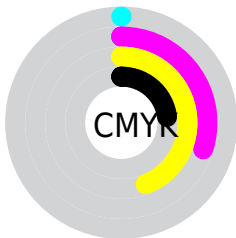
Distribution



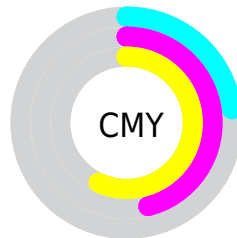
- Red (77%)
- Green (54%)
- Blue (43%)



- Red (77%)
- Yellow (60%)
- Blue (43%)



- Cyan (0%)
- Magenta (30%)
- Yellow (44%)
- Black (23%)



- Cyan (23%)
- Magenta (46%)
- Yellow (57%)

Brightness & Saturation Gradients

These gradients show how the Decimal color 12880493 changes by changing the brightness by 10 percent. The first figure shows a shift by +10% for each color and the second figure -10%.

Similar to the brightness gradients but the following saturation gradients show a change of the Decimal color 12880493 by changing the saturation by 10% instead.

 12880493

 12880493

16777215

 11038805

 16695457

 9197629

 16768188

 7421991

 16775384

 5646866

 16777204

 4002816

 2490368

 0

 12880493

 12880493

 12877145

 12883841

12873798

12887188

12870450

12890536

12867103

12893883

12863755

12897231

12861696

12900579

12903926

12907519

12910591

Harmonies

Analogous

The Analogous color harmony consists of three colors that are next to each other on the color wheel.



13468804



12880493



11572065

Triad

The Triadic color harmony groups three colors that are evenly spaced from another and form a triangle on the color wheel.



12880493



5547663



9540553

Complementary

The Complementary color scheme is a pair of colors which are on the opposite of each other on the color wheel.



12880493



7186372

Split Complementary

Split-complementary colors differ from the complementary color scheme. The scheme consists of three colors, the original color and two neighbors of the complement color.



6790349



12880493



3843755

Square

The Square scheme is like the rectangle color scheme, but the four colors are evenly spaced on the color wheel.



12880493



7709301



4301506



11766200

Rectangle

The Rectangle color scheme consists of four colors that form a rectangle on the color wheel.



12880493



10393954



4301506



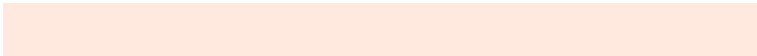
8689356

Sweetspot

The Sweet Spot groups the original color and five complimentary colors.



12880493



16771550



12873127



8417899



0



8421504

Same Dimension

The Same Dimension uses a secret algorithm to generate beautiful new colors.



12880493



16754040



12891245



6380119



10565120



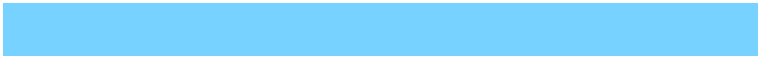
2165504

Inverse Universe

The Inverse Universe completely reimagines the original color for something new.



7186372



7918335



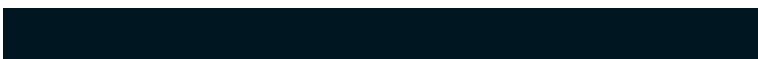
7175364



5725793



27553



5665

Previews

White Background



This preview shows how the Decimal color 12880493 looks on a white background.

Color Contrast Check

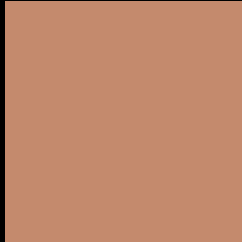
Large Text (above 18pt) WCAG AA × Fail

Any Text WCAG AA × Fail

Large Text (above 18pt) WCAG AAA × Fail

Any Text WCAG AAA × Fail

Black Background



This preview shows how the Decimal color 12880493 looks on a black background.

Color Contrast Check

Large Text (above 18pt) WCAG AA ✓ Pass

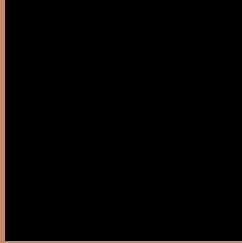
Any Text WCAG AA ✓ Pass

Large Text (above 18pt) WCAG AAA ✓ Pass

Any Text WCAG AAA ✓ Pass

If you want to check with other color combinations, try the [Color Contrast Checker](#).

Decimal 12880493 Background



This preview shows how black text looks on a background with the Decimal color 12880493.



This preview shows how white text looks on a background with the Decimal color 12880493.

Color Blindness Simulation

Color vision deficiency is a very complex topic, and I could not describe the different causes any better than Wikipedia does, so if you want to learn more, you should check out their [article about color blindness](#).

Dichromacy



Original Color
12880493

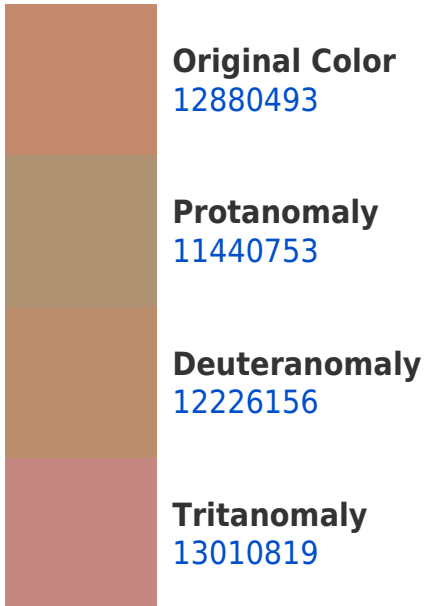
Protanopia
10655603

Deuteranopia
11833708



Tritanopia
13075855

Trichromacy



Monochromacy



CSS Examples

Text

The CSS property to change the color of the text to Decimal 12880493 is called "color". The color property can be set on classes, ids or directly on the HTML element.

This example shows how text in the color #C48A6D looks like.

```
.text, #text, p{  
    color:#C48A6D  
}
```

If you want to add a text shadow in that color use the text-shadow property, you can generate a text shadow directly with our [CSS Text Shadow Generator](#).

Here you see how black text with a 4 pixel #C48A6D colored shadow looks like.

```
.shadow{ text-shadow: 4px 4px 2px #C48A6D
}
```

Border

The CSS property to change the border of an element to Decimal 12880493 is called "border". The border property can be set on classes, ids or directly on the HTML element.

This example shows the color as border, it can be applied via the CSS property "border" or "border-color".

```
.border, #border, table{ border:4px solid
#C48A6D }
```

If only the border color should be changed use the property `border-color`.

```
.border{ border-color:#C48A6D }
```

If you want to add a box shadow in that color use:

Here you see how a box with a 4 pixel #C48A6D colored shadow looks like.

```
.boxshadow{ -moz-box-shadow:4px 4px 4px  
4px #C48A6D; -webkit-box-shadow:4px 4px  
4px 4px #C48A6D; box-shadow:4px 4px 4px  
4px #C48A6D }
```

Background

The CSS property to change the background color of an element to Decimal 12880493 is called "background". The background property can be set on classes, ids or directly on the HTML element.

```
.background, #background, body{  
background:#C48A6D }
```

If only the background color should be changed can be used:

```
.background{ background-color:#C48A6D }
```

This example shows the color as background, it is applied via the CSS property "background".

To optimize and compress your CSS code, you can use our [online CSS compressor and optimizer](#) based on csstidy. If you want to create a linear or radial gradient as background or border, check our [CSS Gradient Generator](#).

Hey! You found this booklet interesting? Support Converting Colors with the new Membership Option!

The pro membership hides all ads, plus gives you double the colors in the color bucket, and more awesome pro features!

[Learn more, Memberships starting at \\$2.50/m!](#)

**Follow me
on Twitter!**

@ConvertingColor