

Converting Colors

Decimal(12880736)

Have a look what the booklet for
Decimal(12880736) contains.

Decimal(12880736)	3
<i>Conversions</i>	4
<i>Details</i>	6
<i>Harmonies</i>	11
<i>Previews</i>	23
<i>Color Blindness Simulation</i>	26
<i>CSS Examples</i>	29

Color

Decimal(12880736)

Conversions

Conversions Part 1

Format	Color
Hex	C48B60
RGB	196, 139, 96
RGB Percent	77%, 55%, 38%
CMY	0.2314, 0.4549, 0.6235
CMYK	0.00, 0.29, 0.51, 0.23
HSL	26°, 46%, 57%
HSV	26°, 51%, 77%
XYZ	34.1089, 31.0455, 15.2610
YIQ	151.1410, 47.7750, -1.2890

Conversions

Conversions Part 2

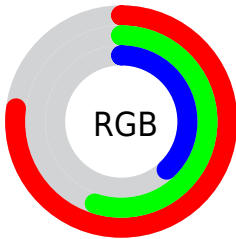
Format	Color
RYB	196, 171, 96
Decimal	12880736
CIELab	62.55, 16.75, 31.53
CIELCh	63, 35.709, 62.019
Yxy	31.0455, 0.4242, 0.3861
Android (android.graphics.Color)	4291070816 (0xFFC48B60)
YUV	151.1410, -27.1845, 39.3413
Hunter-Lab	55.7185, 11.7639, 22.7638

Details

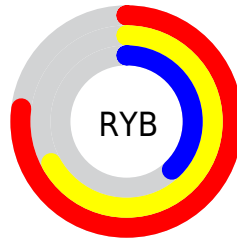
The Decimal color **12880736** is a dark color, and the websafe version is hex **CC9966**. A complement of this color would be **6330820**, and the grayscale version is **9934743**.

A 20% lighter version of the original color is **16761235**, and **9132336** is the 20% darker color. If you saturate the color by 10%, you get **12877900**, and if you desaturate by 10%, it is **12883572**.

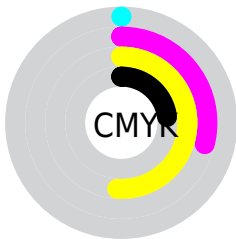
Distribution



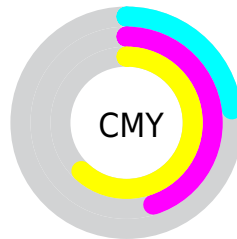
- Red (77%)
- Green (55%)
- Blue (38%)



- Red (77%)
- Yellow (67%)
- Blue (38%)



- Cyan (0%)
- Magenta (29%)
- Yellow (51%)
- Black (23%)



- Cyan (23%)
- Magenta (45%)
- Yellow (62%)

Brightness & Saturation Gradients

These gradients show how the Decimal color 12880736 changes by changing the brightness by 10 percent. The first figure shows a shift by +10% for each color and the second figure -10%.

Similar to the brightness gradients but the following saturation gradients show a change of the Decimal color 12880736 by changing the saturation by 10% instead.

 12880736

 12880736

16777215

 10973512

 16761235

 9132336

 16768430

 7356698

 16775626

 5581570

 16777190

 3872256

 2359296

 0

 12880736

 12880736

 12877900

 12883572

12875065

12886407

12871973

12889499

12869138

12892334

12866560

12895170

12898006

12900841

12903677

12906751

Harmonies

Analogous

The Analogous color harmony consists of three colors that are next to each other on the color wheel.



13861495



12880736



11179607

Triad

The Triadic color harmony groups three colors that are evenly spaced from another and form a triangle on the color wheel.



12880736



3451032



10391245

Complementary

The Complementary color scheme is a pair of colors which are on the opposite of each other on the color wheel.



12880736



6330820

Split Complementary

Split-complementary colors differ from the complementary color scheme. The scheme consists of three colors, the original color and two neighbors of the complement color.



7117526



12880736



42936

Square

The Square scheme is like the rectangle color scheme, but the four colors are evenly spaced on the color wheel.



12880736



6464888



3121870



12682166

Rectangle

The Rectangle color scheme consists of four colors that form a rectangle on the color wheel.



12880736



9739611



3121870



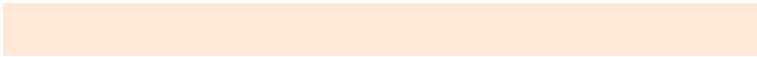
9343698

Sweetspot

The Sweet Spot groups the original color and five complimentary colors.



12880736



16771545



12869786



8417897



0



8421504

Same Dimension

The Same Dimension uses a secret algorithm to generate beautiful new colors.



12880736



16754275



12893280



6380375



10568960



2166272

Inverse Universe

The Inverse Universe completely reimagines the original color for something new.



6330820



6536447



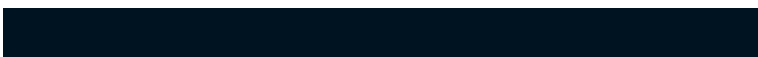
6318276



5725537



23713



4897

Previews

White Background



This preview shows how the Decimal color 12880736 looks on a white background.

Color Contrast Check

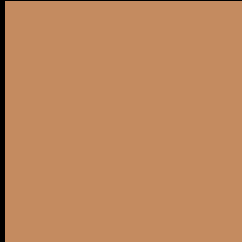
Large Text (above 18pt) WCAG AA × Fail

Any Text WCAG AA × Fail

Large Text (above 18pt) WCAG AAA × Fail

Any Text WCAG AAA × Fail

Black Background



This preview shows how the Decimal color 12880736 looks on a black background.

Color Contrast Check

Large Text (above 18pt) WCAG AA ✓ Pass

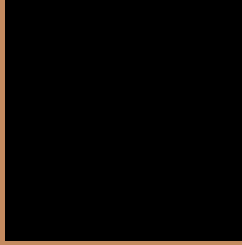
Any Text WCAG AA ✓ Pass

Large Text (above 18pt) WCAG AAA ✓ Pass

Any Text WCAG AAA ✓ Pass

If you want to check with other color combinations, try the [Color Contrast Checker](#).

Decimal 12880736 Background



This preview shows how black text looks on a background with the Decimal color 12880736.



This preview shows how white text looks on a background with the Decimal color 12880736.

Color Blindness Simulation

Color vision deficiency is a very complex topic, and I could not describe the different causes any better than Wikipedia does, so if you want to learn more, you should check out their [article about color blindness](#).


Dichromacy



Original Color
12880736

Protanopia
10786917

Deuteranopia
12030303



Tritanopia
13141391

Trichromacy



Original Color
12880736

Protanomaly
11572067

Deuteranomaly
12357471

Tritanomaly
13076350

Monochromacy



Original Color
12880736

Achromatopsia
9934743

Achromatomaly
10982275

CSS Examples

Text

The CSS property to change the color of the text to Decimal 12880736 is called "color". The color property can be set on classes, ids or directly on the HTML element.

This example shows how text in the color #C48B60 looks like.

```
.text, #text, p{  
    color:#C48B60  
}
```

If you want to add a text shadow in that color use the text-shadow property, you can generate a text shadow directly with our [CSS Text Shadow Generator](#).

Here you see how black text with a 4 pixel #C48B60 colored shadow looks like.

```
.shadow{ text-shadow: 4px 4px 2px #C48B60
}
```

Border

The CSS property to change the border of an element to Decimal 12880736 is called "border". The border property can be set on classes, ids or directly on the HTML element.

This example shows the color as border, it can be applied via the CSS property "border" or "border-color".

```
.border, #border, table{ border:4px solid
#C48B60 }
```

If only the border color should be changed use the property `border-color`.

```
.border{ border-color:#C48B60 }
```

If you want to add a box shadow in that color use:

Here you see how a box with a 4 pixel #C48B60 colored shadow looks like.

```
.boxshadow{ -moz-box-shadow:4px 4px 4px  
4px #C48B60; -webkit-box-shadow:4px 4px  
4px 4px #C48B60; box-shadow:4px 4px 4px  
4px #C48B60 }
```

Background

The CSS property to change the background color of an element to Decimal 12880736 is called "background". The background property can be set on classes, ids or directly on the HTML element.

```
.background, #background, body{  
background:#C48B60 }
```

If only the background color should be changed can be used:

```
.background{ background-color:#C48B60 }
```

This example shows the color as background, it is applied via the CSS property "background".

To optimize and compress your CSS code, you can use our [online CSS compressor and optimizer](#) based on csstidy. If you want to create a linear or radial gradient as background or border, check our [CSS Gradient Generator](#).

Hey! You found this booklet interesting? Support Converting Colors with the new Membership Option!

The pro membership hides all ads, plus gives you double the colors in the color bucket, and more awesome pro features!

[Learn more, Memberships starting at \\$2.50/m!](#)

**Follow me
on Twitter!**

@ConvertingColor