

# Converting Colors

Decimal(12880779)

Have a look what the booklet for  
Decimal(12880779) contains.

<b>Decimal(12880779)</b> .....	3
<i><b>Conversions</b></i> .....	4
<i><b>Details</b></i> .....	6
<i><b>Harmonies</b></i> .....	11
<i><b>Previews</b></i> .....	23
<i><b>Color Blindness Simulation</b></i> .....	26
<i><b>CSS Examples</b></i> .....	29

# **Color**

**Decimal(12880779)**

# Conversions

## Conversions Part 1

Format	Color
Hex	C48B8B
RGB	196, 139, 139
RGB Percent	77%, 55%, 55%
CMY	0.2314, 0.4549, 0.4549
CMYK	0.00, 0.29, 0.29, 0.23
HSL	0°, 33%, 66%
HSV	0°, 29%, 77%
XYZ	36.6578, 32.0651, 28.6832
YIQ	156.0430, 33.9720, 12.0840

# Conversions

## Conversions Part 2

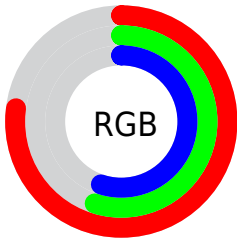
Format	Color
<a href="#">RYB</a>	<a href="#">196, 139, 139</a>
Decimal	<a href="#">12880779</a>
CIELab	<a href="#">63.40, 21.73, 8.68</a>
CIElCh	<a href="#">63, 23.397, 21.781</a>
Yxy	<a href="#">32.0651, 0.3763, 0.3292</a>
Android (android.graphics.Color)	<a href="#">4291070859</a> <a href="#">(0xFFC48B8B)</a>
YUV	<a href="#">156.0430, -8.4022, 35.0423</a>
Hunter-Lab	<a href="#">56.6260, 16.4593, 9.6056</a>

# Details

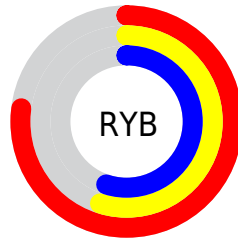
The Decimal color **12880779** is a light color, and the websafe version is hex **CC9999**. A complement of this color would be **9159876**, and the grayscale version is **10263708**.

A 20% lighter version of the original color is **16695744**, and **9263193** is the 20% darker color. If you saturate the color by 10%, you get **12875639**, and if you desaturate by 10%, it is **12885919**.

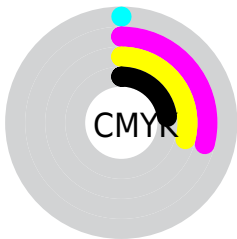
# Distribution



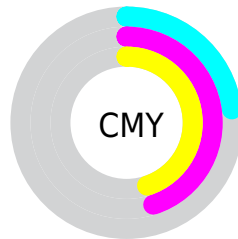
- Red (77%)
- Green (55%)
- Blue (55%)



- Red (77%)
- Yellow (55%)
- Blue (55%)



- Cyan (0%)
- Magenta (29%)
- Yellow (29%)
- Black (23%)



- Cyan (23%)
- Magenta (45%)
- Yellow (45%)

# Brightness & Saturation Gradients

These gradients show how the Decimal color 12880779 changes by changing the brightness by 10 percent. The first figure shows a shift by +10% for each color and the second figure -10%.

Similar to the brightness gradients but the following saturation gradients show a change of the Decimal color 12880779 by changing the saturation by 10% instead.



 12880779

 12880779


16777215

 11039090

 16695744

 9263193

 16768476

 7487810

 16775929

 5843500

 4199447

 2752512

 0

 12880779

 12880779

 12875639

 12885919

 12870756

 12890802

 12865616

 12895942

 12860733

 12900825

 12855593

 12905965

 12850453

 12910591

 12845570

 12845056

# Harmonies

## Analogous

The Analogous color harmony consists of three colors that are next to each other on the color wheel.



12553120



12880779



12488570

# Triad

The Triadic color harmony groups three colors that are evenly spaced from another and form a triangle on the color wheel.



12880779



8495743



7904706

# Complementary

The Complementary color scheme is a pair of colors which are on the opposite of each other on the color wheel.



12880779



9159876

# Split Complementary

Split-complementary colors differ from the complementary color scheme. The scheme consists of three colors, the original color and two neighbors of the complement color.



6398649



12880779



7054739

# Square

The Square scheme is like the rectangle color scheme, but the four colors are evenly spaced on the color wheel.



12880779



10067315



6137256



9803456

# Rectangle

The Rectangle color scheme consists of four colors that form a rectangle on the color wheel.



12880779



11834482



6137256



7315392

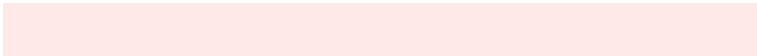


# Sweetspot

The Sweet Spot groups the original color and five complimentary colors.



12880779



16771304



12880836



8417649



0



8421504



# Same Dimension

The Same Dimension uses a secret algorithm to generate beautiful new colors.



12880779



16754342



12888203



6379351



10551296



2162688



# Inverse Universe

The Inverse Universe completely reimagines the original color for something new.



9159876



10944511



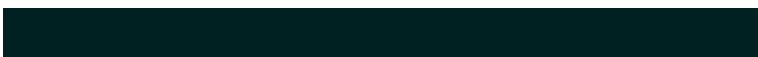
9152708



5726561



41377

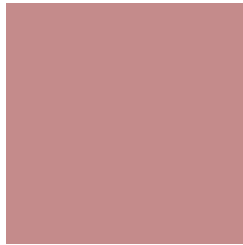


8481



# Previews

## White Background



This preview shows how the Decimal color 12880779 looks on a white background.

## Color Contrast Check

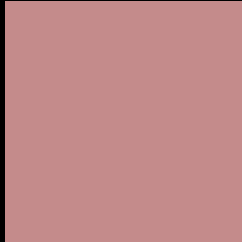
Large Text (above 18pt) WCAG AA × Fail

Any Text WCAG AA × Fail

Large Text (above 18pt) WCAG AAA × Fail

Any Text WCAG AAA × Fail

# Black Background



This preview shows how the Decimal color 12880779 looks on a black background.

## Color Contrast Check

Large Text (above 18pt) WCAG AA ✓ Pass

Any Text WCAG AA ✓ Pass

Large Text (above 18pt) WCAG AAA ✓ Pass

Any Text WCAG AAA ✓ Pass

If you want to check with other color combinations, try the [Color Contrast Checker](#).



## Decimal 12880779 Background



This preview shows how black text looks on a background with the Decimal color 12880779.



This preview shows how white text looks on a background with the Decimal color 12880779.

# Color Blindness Simulation

Color vision deficiency is a very complex topic, and I could not describe the different causes any better than Wikipedia does, so if you want to learn more, you should check out their [article about color blindness](#).

## Dichromacy





**Tritanopia**  
12946068

# Trichromacy



**Original Color**  
12880779

**Protanomaly**  
11310224

**Deuteranomaly**  
12030346

**Tritanomaly**  
12946065

# Monochromacy



**Original Color**  
12880779

**Achromatopsia**  
10263708

**Achromatomaly**  
11245206

# CSS Examples

## Text

The CSS property to change the color of the text to Decimal 12880779 is called "color". The color property can be set on classes, ids or directly on the HTML element.

This example shows how text in the color #C48B8B looks like.

```
.text, #text, p{  
    color:#C48B8B  
}
```

If you want to add a text shadow in that color use the text-shadow property, you can generate a text shadow directly with our [CSS Text Shadow Generator](#).

Here you see how black text with a 4 pixel #C48B8B colored shadow looks like.

```
.shadow{ text-shadow: 4px 4px 2px #C48B8B
}
```

## Border

The CSS property to change the border of an element to Decimal 12880779 is called "border". The border property can be set on classes, ids or directly on the HTML element.

This example shows the color as border, it can be applied via the CSS property "border" or "border-color".

```
.border, #border, table{ border:4px solid
#C48B8B }
```

If only the border color should be changed use the property `border-color`.

```
.border{ border-color:#C48B8B }
```

If you want to add a box shadow in that color use:

Here you see how a box with a 4 pixel #C48B8B colored shadow looks like.

```
.boxshadow{ -moz-box-shadow:4px 4px 4px  
4px #C48B8B; -webkit-box-shadow:4px 4px  
4px 4px #C48B8B; box-shadow:4px 4px 4px  
4px #C48B8B }
```

# Background

The CSS property to change the background color of an element to Decimal 12880779 is called "background". The background property can be set on classes, ids or directly on the HTML element.

```
.background, #background, body{  
background:#C48B8B }
```

If only the background color should be changed can be used:

```
.background{ background-color:#C48B8B }
```

This example shows the color as background, it is applied via the CSS property "background".

To optimize and compress your CSS code, you can use our [online CSS compressor and optimizer](#) based on csstidy. If you want to create a linear or radial gradient as background or border, check our [CSS Gradient Generator](#).



Hey! You found this booklet interesting? Support Converting Colors with the new Membership Option!

The pro membership hides all ads, plus gives you double the colors in the color bucket, and more awesome pro features!

**[Learn more, Memberships starting at \\$2.50/m!](#)**

**Follow me  
on Twitter!**

@ConvertingColor