

# Converting Colors

Decimal(12881264)

Have a look what the booklet for  
Decimal(12881264) contains.

<b>Decimal(12881264)</b> .....	3
<i><b>Conversions</b></i> .....	4
<i><b>Details</b></i> .....	6
<i><b>Harmonies</b></i> .....	11
<i><b>Previews</b></i> .....	23
<i><b>Color Blindness Simulation</b></i> .....	26
<i><b>CSS Examples</b></i> .....	29

# **Color**

**Decimal(12881264)**

# Conversions

## Conversions Part 1

<b>Format</b>	<b>Color</b>
Hex	C48D70
RGB	196, 141, 112
RGB Percent	77%, 55%, 44%
CMY	0.2314, 0.4471, 0.5608
CMYK	0.00, 0.28, 0.43, 0.23
HSL	21°, 42%, 60%
HSV	21°, 43%, 77%
XYZ	35.2145, 31.9554, 19.6412
YIQ	154.1390, 42.0890, 2.6410

# Conversions

## Conversions Part 2

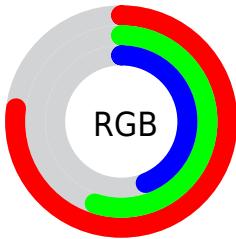
<b>Format</b>	<b>Color</b>
<a href="#">RYB</a>	<a href="#">196, 156, 112</a>
Decimal	<a href="#">12881264</a>
CIELab	<a href="#">63.31, 17.28, 23.73</a>
CIElCh	<a href="#">63, 29.352, 53.942</a>
Yxy	<a href="#">31.9554, 0.4056, 0.3681</a>
Android (android.graphics.Color)	<a href="#">4291071344 (0xFFC48D70)</a>
YUV	<a href="#">154.1390, -20.7745, 36.7121</a>
Hunter-Lab	<a href="#">56.5291, 12.2696, 18.9698</a>

# Details

The Decimal color **12881264** is a light color, and the websafe version is hex **CC9966**. A complement of this color would be **7382980**, and the grayscale version is **10132122**.

A 20% lighter version of the original color is **16696228**, and **9198400** is the 20% darker color. If you saturate the color by 10%, you get **12877916**, and if you desaturate by 10%, it is **12884612**.

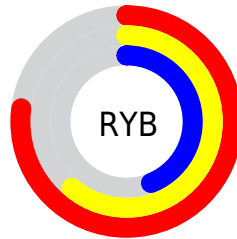
# Distribution



Red (77%)

Green (55%)

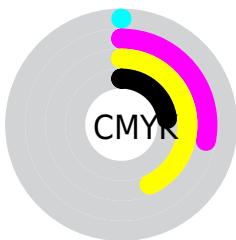
Blue (44%)



Red (77%)

Yellow (61%)

Blue (44%)

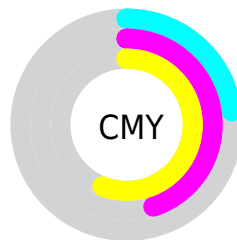


Cyan (0%)

Magenta (28%)

Yellow (43%)

Black (23%)



Cyan (23%)

Magenta (45%)

Yellow (56%)

# Brightness & Saturation Gradients

These gradients show how the Decimal color 12881264 changes by changing the brightness by 10 percent. The first figure shows a shift by +10% for each color and the second figure -10%.

Similar to the brightness gradients but the following saturation gradients show a change of the Decimal color 12881264 by changing the saturation by 10% instead.



 12881264

 12881264

16777215

 11039575

 16696228

 9198400

 16768959

 7422761

 16776155

 5712916

 16777208

 4069120

 2490368

 0

 12881264

 12881264

 12877916

 12884612

12874569

12887959

12871477

12891307

12868130

12894398

12864782

12897746

12862464

12901094

12904441

12907775

12910591

# Harmonies

## Analogous

The Analogous color harmony consists of three colors that are next to each other on the color wheel.



13469573



12881264



11572837

# Triad

The Triadic color harmony groups three colors that are evenly spaced from another and form a triangle on the color wheel.



12881264



5875603



9802953

# Complementary

The Complementary color scheme is a pair of colors which are on the opposite of each other on the color wheel.



12881264



7382980

# Split Complementary

Split-complementary colors differ from the complementary color scheme. The scheme consists of three colors, the original color and two neighbors of the complement color.



7249357



12881264



4433837

# Square

The Square scheme is like the rectangle color scheme, but the four colors are evenly spaced on the color wheel.



12881264



7906426



4957379



11897784

# Rectangle

The Rectangle color scheme consists of four colors that form a rectangle on the color wheel.



12881264



10460262



4957379



9017548

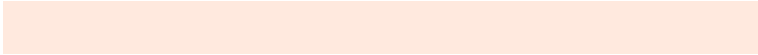


# Sweetspot

The Sweet Spot groups the original color and five complimentary colors.



12881264



16771550



12873896



8417899



0



8421504



# Same Dimension

The Same Dimension uses a secret algorithm to generate beautiful new colors.



12881264



16755325



12891760



6380375



10565376



2165504

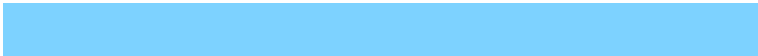


# Inverse Universe

The Inverse Universe completely reimagines the original color for something new.



7382980



8246015



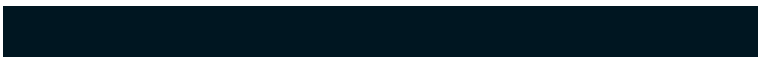
7372484



5725793



27041



5665



# Previews

## White Background



This preview shows how the Decimal color 12881264 looks on a white background.

## Color Contrast Check

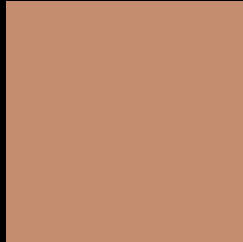
Large Text (above 18pt) WCAG AA × Fail

Any Text WCAG AA × Fail

Large Text (above 18pt) WCAG AAA × Fail

Any Text WCAG AAA × Fail

# Black Background



This preview shows how the Decimal color 12881264 looks on a black background.

## Color Contrast Check

Large Text (above 18pt) WCAG AA ✓ Pass

Any Text WCAG AA ✓ Pass

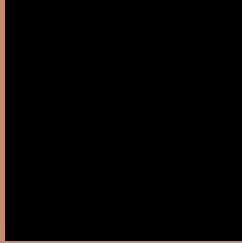
Large Text (above 18pt) WCAG AAA ✓ Pass

Any Text WCAG AAA ✓ Pass

If you want to check with other color combinations, try the [Color Contrast Checker](#).



## Decimal 12881264 Background



This preview shows how black text looks on a background with the Decimal color 12881264.



This preview shows how white text looks on a background with the Decimal color 12881264.

# Color Blindness Simulation

Color vision deficiency is a very complex topic, and I could not describe the different causes any better than Wikipedia does, so if you want to learn more, you should check out their [article about color blindness](#).

## Dichromacy



**Original Color**  
12881264

**Protanopia**  
10787189

**Deuteranopia**  
11965295



**Tritanopia**  
13076627

# Trichromacy



**Original Color**  
12881264

**Protanomaly**  
11572595

**Deuteranomaly**  
12292463

**Tritanomaly**  
13011590

# Monochromacy



**Original Color**  
12881264

**Achromatopsia**  
10132122

**Achromatomaly**  
11113867

# CSS Examples

## Text

The CSS property to change the color of the text to Decimal 12881264 is called "color". The color property can be set on classes, ids or directly on the HTML element.

This example shows how text in the color #C48D70 looks like.

```
.text, #text, p{  
    color:#C48D70  
}
```

If you want to add a text shadow in that color use the text-shadow property, you can generate a text shadow directly with our [CSS Text Shadow Generator](#).

Here you see how black text with a 4 pixel #C48D70 colored shadow looks like.

```
.shadow{ text-shadow: 4px 4px 2px #C48D70  
}
```

## Border

The CSS property to change the border of an element to Decimal 12881264 is called "border". The border property can be set on classes, ids or directly on the HTML element.

This example shows the color as border, it can be applied via the CSS property "border" or "border-color".

```
.border, #border, table{ border:4px solid  
#C48D70 }
```

If only the border color should be changed use the property `border-color`.

```
.border{ border-color:#C48D70 }
```

If you want to add a box shadow in that color use:

Here you see how a box with a 4 pixel #C48D70 colored shadow looks like.

```
.boxshadow{ -moz-box-shadow:4px 4px 4px  
4px #C48D70; -webkit-box-shadow:4px 4px  
4px 4px #C48D70; box-shadow:4px 4px 4px  
4px #C48D70 }
```

# Background

The CSS property to change the background color of an element to Decimal 12881264 is called "background". The background property can be set on classes, ids or directly on the HTML element.

```
.background, #background, body{  
background:#C48D70 }
```

If only the background color should be changed can be used:

```
.background{ background-color:#C48D70 }
```

This example shows the color as background, it is applied via the CSS property "background".

To optimize and compress your CSS code, you can use our [online CSS compressor and optimizer](#) based on csstidy. If you want to create a linear or radial gradient as background or border, check our [CSS Gradient Generator](#).



Hey! You found this booklet interesting? Support Converting Colors with the new Membership Option!

The pro membership hides all ads, plus gives you double the colors in the color bucket, and more awesome pro features!

**[Learn more, Memberships starting at \\$2.50/m!](#)**

**Follow me  
on Twitter!**

@ConvertingColor