

Converting Colors

Decimal(12881517)

Have a look what the booklet for
Decimal(12881517) contains.

Decimal(12881517)	3
<i>Conversions</i>	4
<i>Details</i>	6
<i>Harmonies</i>	11
<i>Previews</i>	23
<i>Color Blindness Simulation</i>	26
<i>CSS Examples</i>	29

Color

Decimal(12881517)

Conversions

Conversions Part 1

Format	Color
Hex	C48E6D
RGB	196, 142, 109
RGB Percent	77%, 56%, 43%
CMY	0.2314, 0.4431, 0.5725
CMYK	0.00, 0.28, 0.44, 0.23
HSL	23°, 42%, 60%
HSV	23°, 44%, 77%
XYZ	35.1983, 32.1859, 18.8253
YIQ	154.3840, 42.7770, 1.1850

Conversions

Conversions Part 2

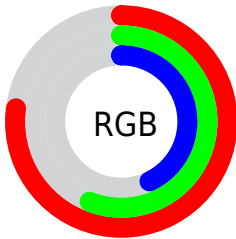
Format	Color
RYB	196, 162, 109
Decimal	12881517
CIELab	63.50, 16.40, 25.64
CIElCh	63, 30.440, 57.397
Yxy	32.1859, 0.4083, 0.3733
Android (android.graphics.Color)	4291071597 (0xFFC48E6D)
YUV	154.3840, -22.3743, 36.4972
Hunter-Lab	56.7326, 11.4636, 20.0389

Details

The Decimal color **12881517** is a dark color, and the websafe version is hex **CC9966**. A complement of this color would be **7185348**, and the grayscale version is **10197915**.

A 20% lighter version of the original color is **16696481**, and **9198653** is the 20% darker color. If you saturate the color by 10%, you get **12878425**, and if you desaturate by 10%, it is **12884609**.

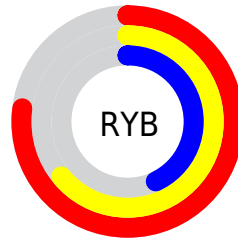
Distribution



Red (77%)

Green (56%)

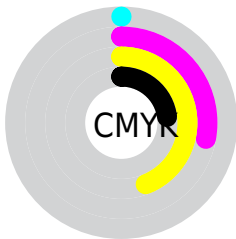
Blue (43%)



Red (77%)

Yellow (64%)

Blue (43%)

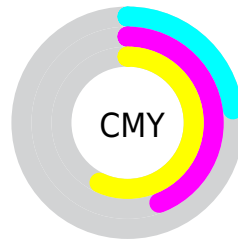


Cyan (0%)

Magenta (28%)

Yellow (44%)

Black (23%)



Cyan (23%)

Magenta (44%)

Yellow (57%)

Brightness & Saturation Gradients

These gradients show how the Decimal color 12881517 changes by changing the brightness by 10 percent. The first figure shows a shift by +10% for each color and the second figure -10%.

Similar to the brightness gradients but the following saturation gradients show a change of the Decimal color 12881517 by changing the saturation by 10% instead.

 12881517

 12881517

16777215

 11039828

 16696481

 9198653

 16769212

 7423015

 16776408

 5713169

 16777204

 4069376

 2490368

 0

 12881517

 12881517

 12878425

 12884609

12875334

12887700

12872242

12890792

12868895

12894139

12865803

12897231

12864000

12900323

12903414

12906495

12909567

Harmonies

Analogous

The Analogous color harmony consists of three colors that are next to each other on the color wheel.



13600642



12881517



11507556

Triad

The Triadic color harmony groups three colors that are evenly spaced from another and form a triangle on the color wheel.



12881517



5482646



10130634

Complementary

The Complementary color scheme is a pair of colors which are on the opposite of each other on the color wheel.



12881517



7185348

Split Complementary

Split-complementary colors differ from the complementary color scheme. The scheme consists of three colors, the original color and two neighbors of the complement color.



7445967



12881517



4040882

Square

The Square scheme is like the rectangle color scheme, but the four colors are evenly spaced on the color wheel.



12881517



7579260



4891847



12225207

Rectangle

The Rectangle color scheme consists of four colors that form a rectangle on the color wheel.



12881517



10263909



4891847



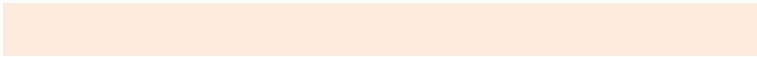
9279437

Sweetspot

The Sweet Spot groups the original color and five complimentary colors.



12881517



16771806



12873124



8418155



0



8421504

Same Dimension

The Same Dimension uses a secret algorithm to generate beautiful new colors.



12881517



16755576



12892269



6380375



10566912



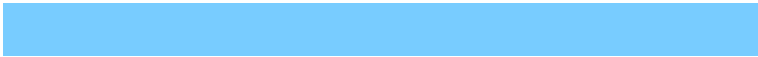
2166016

Inverse Universe

The Inverse Universe completely reimagines the original color for something new.



7185348



7916799



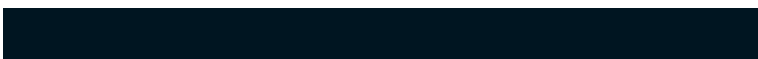
7174596



5725537



25761



5409

Previews

White Background



This preview shows how the Decimal color 12881517 looks on a white background.

Color Contrast Check

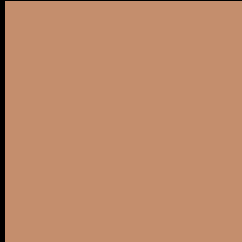
Large Text (above 18pt) WCAG AA × Fail

Any Text WCAG AA × Fail

Large Text (above 18pt) WCAG AAA × Fail

Any Text WCAG AAA × Fail

Black Background



This preview shows how the Decimal color 12881517 looks on a black background.

Color Contrast Check

Large Text (above 18pt) WCAG AA ✓ Pass

Any Text WCAG AA ✓ Pass

Large Text (above 18pt) WCAG AAA ✓ Pass

Any Text WCAG AAA ✓ Pass

If you want to check with other color combinations, try the [Color Contrast Checker](#).

Decimal 12881517 Background



This preview shows how black text looks on a background with the Decimal color 12881517.



This preview shows how white text looks on a background with the Decimal color 12881517.

Color Blindness Simulation

Color vision deficiency is a very complex topic, and I could not describe the different causes any better than Wikipedia does, so if you want to learn more, you should check out their [article about color blindness](#).

Dichromacy





Tritanopia
13076883

Trichromacy



Original Color
12881517

Protanomaly
11572848

Deuteranomaly
12357996

Tritanomaly
13011845

Monochromacy



Original Color
12881517

Achromatopsia
10132122

Achromatomaly
11114122

CSS Examples

Text

The CSS property to change the color of the text to Decimal 12881517 is called "color". The color property can be set on classes, ids or directly on the HTML element.

This example shows how text in the color #C48E6D looks like.

```
.text, #text, p{  
    color:#C48E6D  
}
```

If you want to add a text shadow in that color use the text-shadow property, you can generate a text shadow directly with our [CSS Text Shadow Generator](#).

Here you see how black text with a 4 pixel #C48E6D colored shadow looks like.

```
.shadow{ text-shadow: 4px 4px 2px #C48E6D
}
```

Border

The CSS property to change the border of an element to Decimal 12881517 is called "border". The border property can be set on classes, ids or directly on the HTML element.

This example shows the color as border, it can be applied via the CSS property "border" or "border-color".

```
.border, #border, table{ border:4px solid
#C48E6D }
```

If only the border color should be changed use the property `border-color`.

```
.border{ border-color:#C48E6D }
```

If you want to add a box shadow in that color use:

Here you see how a box with a 4 pixel #C48E6D colored shadow looks like.

```
.boxshadow{ -moz-box-shadow:4px 4px 4px  
4px #C48E6D; -webkit-box-shadow:4px 4px  
4px 4px #C48E6D; box-shadow:4px 4px 4px  
4px #C48E6D }
```

Background

The CSS property to change the background color of an element to Decimal 12881517 is called "background". The background property can be set on classes, ids or directly on the HTML element.

```
.background, #background, body{  
background:#C48E6D }
```

If only the background color should be changed can be used:

```
.background{ background-color:#C48E6D }
```

This example shows the color as background, it is applied via the CSS property "background".

To optimize and compress your CSS code, you can use our [online CSS compressor and optimizer](#) based on csstidy. If you want to create a linear or radial gradient as background or border, check our [CSS Gradient Generator](#).

Hey! You found this booklet interesting? Support Converting Colors with the new Membership Option!

The pro membership hides all ads, plus gives you double the colors in the color bucket, and more awesome pro features!

[Learn more, Memberships starting at \\$2.50/m!](#)

**Follow me
on Twitter!**

@ConvertingColor