

Converting Colors

Decimal(12881767)

Have a look what the booklet for
Decimal(12881767) contains.

Decimal(12881767)	3
<i>Conversions</i>	4
<i>Details</i>	6
<i>Harmonies</i>	11
<i>Previews</i>	23
<i>Color Blindness Simulation</i>	26
<i>CSS Examples</i>	29

Color

Decimal(12881767)

Conversions

Conversions Part 1

Format	Color
Hex	C48F67
RGB	196, 143, 103
RGB Percent	77%, 56%, 40%
CMY	0.2314, 0.4392, 0.5961
CMYK	0.00, 0.27, 0.47, 0.23
HSL	26°, 44%, 59%
HSV	26°, 47%, 77%
XYZ	35.0356, 32.3600, 17.2315
YIQ	154.2870, 44.4280, -1.2040

Conversions

Conversions Part 2

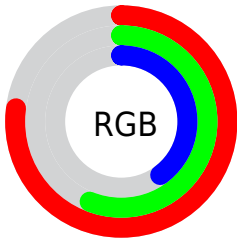
Format	Color
RYB	196, 173, 103
Decimal	12881767
CIELab	63.64, 15.23, 29.13
CIElCh	64, 32.870, 62.395
Yxy	32.3600, 0.4140, 0.3824
Android (android.graphics.Color)	4291071847 (0xFFC48F67)
YUV	154.2870, -25.2845, 36.5823
Hunter-Lab	56.8858, 10.3868, 21.8603

Details

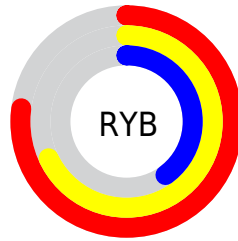
The Decimal color **12881767** is a dark color, and the websafe version is hex **CC9966**. A complement of this color would be **6790340**, and the grayscale version is **10197915**.

A 20% lighter version of the original color is **16762267**, and **9198903** is the 20% darker color. If you saturate the color by 10%, you get **12878931**, and if you desaturate by 10%, it is **12884603**.

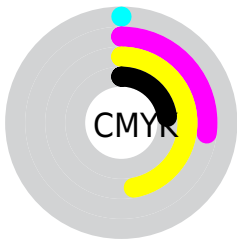
Distribution



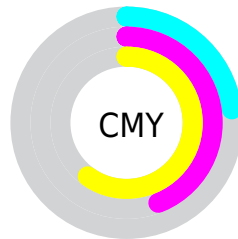
- Red (77%)
- Green (56%)
- Blue (40%)



- Red (77%)
- Yellow (68%)
- Blue (40%)



- Cyan (0%)
- Magenta (27%)
- Yellow (47%)
- Black (23%)



- Cyan (23%)
- Magenta (44%)
- Yellow (60%)

Brightness & Saturation Gradients

These gradients show how the Decimal color 12881767 changes by changing the brightness by 10 percent. The first figure shows a shift by +10% for each color and the second figure -10%.

Similar to the brightness gradients but the following saturation gradients show a change of the Decimal color 12881767 by changing the saturation by 10% instead.

 12881767  12881767

16777215  11040079

 16762267  9198903

 16769462  7423265


 16776913  5647882

 16777198  4004096

 2425088

 0

 12881767  12881767

 12878931  12884603

 12876096

 12887438

 12873004

 12890530

 12870169

 12893365

 12867333

 12896201

 12866560

 12899037

 12901872

 12904703

 12907775

Harmonies

Analogous

The Analogous color harmony consists of three colors that are next to each other on the color wheel.



13797244



12881767



11311455

Triad

The Triadic color harmony groups three colors that are evenly spaced from another and form a triangle on the color wheel.



12881767



4565660



10588876

Complementary

The Complementary color scheme is a pair of colors which are on the opposite of each other on the color wheel.



12881767



6790340

Split Complementary

Split-complementary colors differ from the complementary color scheme. The scheme consists of three colors, the original color and two neighbors of the complement color.



7707860



12881767



2861496

Square

The Square scheme is like the rectangle color scheme, but the four colors are evenly spaced on the color wheel.



12881767



6989694



4564173



12683446

Rectangle

The Rectangle color scheme consists of four colors that form a rectangle on the color wheel.



12881767



9936739



4564173



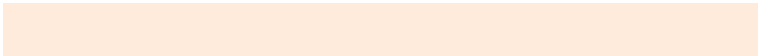
9672144

Sweetspot

The Sweet Spot groups the original color and five complimentary colors.



12881767



16772059



12871581



8418154



0



8421504

Same Dimension

The Same Dimension uses a secret algorithm to generate beautiful new colors.



12881767



16755822



12893287



6380375



10568960



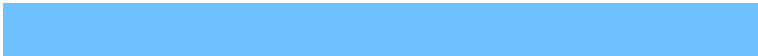
2166272

Inverse Universe

The Inverse Universe completely reimagines the original color for something new.



6790340



7258367



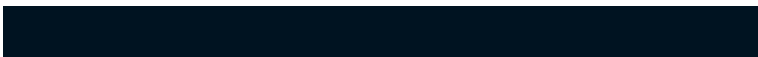
6778820



5725537



23713



4897

Previews

White Background



This preview shows how the Decimal color 12881767 looks on a white background.

Color Contrast Check

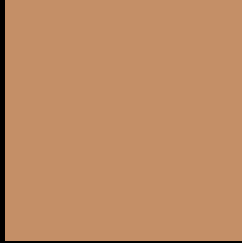
Large Text (above 18pt) WCAG AA × Fail

Any Text WCAG AA × Fail

Large Text (above 18pt) WCAG AAA × Fail

Any Text WCAG AAA × Fail

Black Background



This preview shows how the Decimal color 12881767 looks on a black background.

Color Contrast Check

Large Text (above 18pt) WCAG AA ✓ Pass

Any Text WCAG AA ✓ Pass

Large Text (above 18pt) WCAG AAA ✓ Pass

Any Text WCAG AAA ✓ Pass

If you want to check with other color combinations, try the [Color Contrast Checker](#).

Decimal 12881767 Background



This preview shows how black text looks on a background with the Decimal color 12881767.



This preview shows how white text looks on a background with the Decimal color 12881767.

Color Blindness Simulation

Color vision deficiency is a very complex topic, and I could not describe the different causes any better than Wikipedia does, so if you want to learn more, you should check out their [article about color blindness](#).

Dichromacy





Tritanopia
13142420

Trichromacy



Original Color
12881767

Protanomaly
11703914

Deuteranomaly
12423782

Tritanomaly
13077380

Monochromacy



Original Color
12881767

Achromatopsia
10132122

Achromatomaly
11114119

CSS Examples

Text

The CSS property to change the color of the text to Decimal 12881767 is called "color". The color property can be set on classes, ids or directly on the HTML element.

This example shows how text in the color #C48F67 looks like.

```
.text, #text, p{  
    color:#C48F67  
}
```

If you want to add a text shadow in that color use the text-shadow property, you can generate a text shadow directly with our [CSS Text Shadow Generator](#).

Here you see how black text with a 4 pixel #C48F67 colored shadow looks like.

```
.shadow{ text-shadow: 4px 4px 2px #C48F67
}
```

Border

The CSS property to change the border of an element to Decimal 12881767 is called "border". The border property can be set on classes, ids or directly on the HTML element.

This example shows the color as border, it can be applied via the CSS property "border" or "border-color".

```
.border, #border, table{ border:4px solid
#C48F67 }
```

If only the border color should be changed use the property `border-color`.

```
.border{ border-color:#C48F67 }
```

If you want to add a box shadow in that color use:

Here you see how a box with a 4 pixel #C48F67 colored shadow looks like.

```
.boxshadow{ -moz-box-shadow:4px 4px 4px  
4px #C48F67; -webkit-box-shadow:4px 4px  
4px 4px #C48F67; box-shadow:4px 4px 4px  
4px #C48F67 }
```

Background

The CSS property to change the background color of an element to Decimal 12881767 is called "background". The background property can be set on classes, ids or directly on the HTML element.

```
.background, #background, body{  
background:#C48F67 }
```

If only the background color should be changed can be used:

```
.background{ background-color:#C48F67 }
```

This example shows the color as background, it is applied via the CSS property "background".

To optimize and compress your CSS code, you can use our [online CSS compressor and optimizer](#) based on csstidy. If you want to create a linear or radial gradient as background or border, check our [CSS Gradient Generator](#).

Hey! You found this booklet interesting? Support Converting Colors with the new Membership Option!

The pro membership hides all ads, plus gives you double the colors in the color bucket, and more awesome pro features!

[Learn more, Memberships starting at \\$2.50/m!](#)

**Follow me
on Twitter!**

@ConvertingColor