

Converting Colors

Decimal(12881781)

Have a look what the booklet for
Decimal(12881781) contains.

Decimal(12881781)	3
<i>Conversions</i>	4
<i>Details</i>	6
<i>Harmonies</i>	11
<i>Previews</i>	23
<i>Color Blindness Simulation</i>	26
<i>CSS Examples</i>	29

Color

Decimal(12881781)

Conversions

Conversions Part 1

Format	Color
Hex	C48F75
RGB	196, 143, 117
RGB Percent	77%, 56%, 46%
CMY	0.2314, 0.4392, 0.5412
CMYK	0.00, 0.27, 0.40, 0.23
HSL	20°, 40%, 61%
HSV	20°, 40%, 77%
XYZ	35.7983, 32.6650, 21.2478
YIQ	155.8830, 39.9340, 3.1500

Conversions

Conversions Part 2

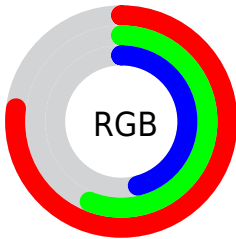
Format	Color
RYB	196, 156, 117
Decimal	12881781
CIELab	63.89, 16.74, 21.73
CIElCh	64, 27.432, 52.397
Yxy	32.6650, 0.3990, 0.3641
Android (android.graphics.Color)	4291071861 (0xFFC48F75)
YUV	155.8830, -19.1693, 35.1826
Hunter-Lab	57.1533, 11.7861, 17.9652

Details

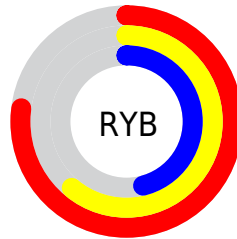
The Decimal color **12881781** is a light color, and the websafe version is hex **CC9966**. A complement of this color would be **7711428**, and the grayscale version is **10263708**.

A 20% lighter version of the original color is **16696745**, and **9198661** is the 20% darker color. If you saturate the color by 10%, you get **12878433**, and if you desaturate by 10%, it is **12885129**.

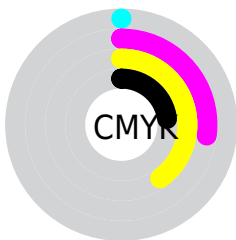
Distribution



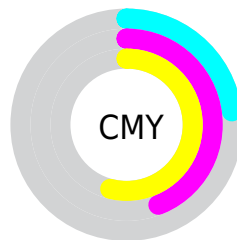
- Red (77%)
- Green (56%)
- Blue (46%)



- Red (77%)
- Yellow (61%)
- Blue (46%)



- Cyan (0%)
- Magenta (27%)
- Yellow (40%)
- Black (23%)



- Cyan (23%)
- Magenta (44%)
- Yellow (54%)

Brightness & Saturation Gradients

These gradients show how the Decimal color 12881781 changes by changing the brightness by 10 percent. The first figure shows a shift by +10% for each color and the second figure -10%.

Similar to the brightness gradients but the following saturation gradients show a change of the Decimal color 12881781 by changing the saturation by 10% instead.



12881781



12881781

16777215



11040092



16696745



9198661



16769477



7423278



16776929



5713433

16777213



4135168



2556160



0



12881781



12881781



12878433



12885129

 12875086

 12888476

 12871738

 12891824

 12868135

 12895427

 12864787

 12898775

 12861696

 12902123

 12905470

 12908799

 12910591

Harmonies

Analogous

The Analogous color harmony consists of three colors that are next to each other on the color wheel.



13404553



12881781



11704170

Triad

The Triadic color harmony groups three colors that are evenly spaced from another and form a triangle on the color wheel.



12881781



6400147



9869256

Complementary

The Complementary color scheme is a pair of colors which are on the opposite of each other on the color wheel.



12881781



7711428

Split Complementary

Split-complementary colors differ from the complementary color scheme. The scheme consists of three colors, the original color and two neighbors of the complement color.



7512011



12881781



5154989

Square

The Square scheme is like the rectangle color scheme, but the four colors are evenly spaced on the color wheel.



12881781



8234364



5547457



11833017

Rectangle

The Rectangle color scheme consists of four colors that form a rectangle on the color wheel.



12881781



10656875



5547457



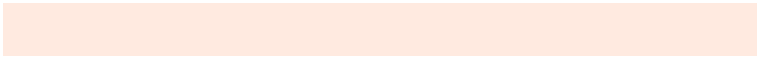
9083594

Sweetspot

The Sweet Spot groups the original color and five complimentary colors.



12881781



16771808



12875179



8418414



0



8421504

Same Dimension

The Same Dimension uses a secret algorithm to generate beautiful new colors.



12881781



16756101



12891765



6380119



10564864



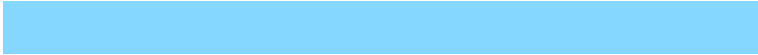
2165504

Inverse Universe

The Inverse Universe completely reimagines the original color for something new.



7711428



8771583



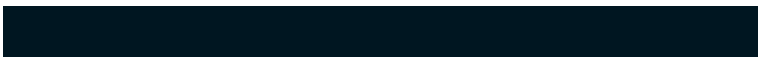
7701444



5725793



27809



5665

Previews

White Background



This preview shows how the Decimal color 12881781 looks on a white background.

Color Contrast Check

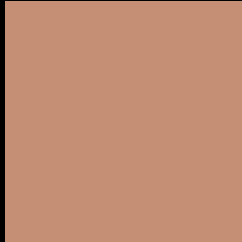
Large Text (above 18pt) WCAG AA × Fail

Any Text WCAG AA × Fail

Large Text (above 18pt) WCAG AAA × Fail

Any Text WCAG AAA × Fail

Black Background



This preview shows how the Decimal color 12881781 looks on a black background.

Color Contrast Check

Large Text (above 18pt) WCAG AA ✓ Pass

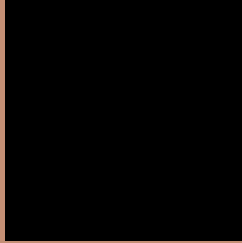
Any Text WCAG AA ✓ Pass

Large Text (above 18pt) WCAG AAA ✓ Pass

Any Text WCAG AAA ✓ Pass

If you want to check with other color combinations, try the [Color Contrast Checker](#).

Decimal 12881781 Background



This preview shows how black text looks on a background with the Decimal color 12881781.



This preview shows how white text looks on a background with the Decimal color 12881781.

Color Blindness Simulation

Color vision deficiency is a very complex topic, and I could not describe the different causes any better than Wikipedia does, so if you want to learn more, you should check out their [article about color blindness](#).

Dichromacy



Original Color
12881781

Protanopia
10853242

Deuteranopia
12031348



Tritanopia
13077397

Trichromacy



Original Color
12881781

Protanomaly
11573112

Deuteranomaly
12358516

Tritanomaly
13012105

Monochromacy



Original Color
12881781

Achromatopsia
10263708

Achromatomaly
11245454

CSS Examples

Text

The CSS property to change the color of the text to Decimal 12881781 is called "color". The color property can be set on classes, ids or directly on the HTML element.

This example shows how text in the color #C48F75 looks like.

```
.text, #text, p{  
    color:#C48F75  
}
```

If you want to add a text shadow in that color use the text-shadow property, you can generate a text shadow directly with our [CSS Text Shadow Generator](#).

Here you see how black text with a 4 pixel #C48F75 colored shadow looks like.

```
.shadow{ text-shadow: 4px 4px 2px #C48F75
}
```

Border

The CSS property to change the border of an element to Decimal 12881781 is called "border". The border property can be set on classes, ids or directly on the HTML element.

This example shows the color as border, it can be applied via the CSS property "border" or "border-color".

```
.border, #border, table{ border:4px solid
#C48F75 }
```

If only the border color should be changed use the property `border-color`.

```
.border{ border-color:#C48F75 }
```

If you want to add a box shadow in that color use:

Here you see how a box with a 4 pixel #C48F75 colored shadow looks like.

```
.boxshadow{ -moz-box-shadow:4px 4px 4px  
4px #C48F75; -webkit-box-shadow:4px 4px  
4px 4px #C48F75; box-shadow:4px 4px 4px  
4px #C48F75 }
```

Background

The CSS property to change the background color of an element to Decimal 12881781 is called "background". The background property can be set on classes, ids or directly on the HTML element.

```
.background, #background, body{  
background:#C48F75 }
```

If only the background color should be changed can be used:

```
.background{ background-color:#C48F75 }
```

This example shows the color as background, it is applied via the CSS property "background".

To optimize and compress your CSS code, you can use our [online CSS compressor and optimizer](#) based on csstidy. If you want to create a linear or radial gradient as background or border, check our [CSS Gradient Generator](#).

Hey! You found this booklet interesting? Support Converting Colors with the new Membership Option!

The pro membership hides all ads, plus gives you double the colors in the color bucket, and more awesome pro features!

[Learn more, Memberships starting at \\$2.50/m!](#)

**Follow me
on Twitter!**

@ConvertingColor