

# Converting Colors

Decimal(12881808)

Have a look what the booklet for  
Decimal(12881808) contains.

<b>Decimal(12881808)</b> .....	3
<i><b>Conversions</b></i> .....	4
<i><b>Details</b></i> .....	6
<i><b>Harmonies</b></i> .....	11
<i><b>Previews</b></i> .....	23
<i><b>Color Blindness Simulation</b></i> .....	26
<i><b>CSS Examples</b></i> .....	29

# **Color**

**Decimal(12881808)**

# Conversions

## Conversions Part 1

<b>Format</b>	<b>Color</b>
Hex	C48F90
RGB	196, 143, 144
RGB Percent	77%, 56%, 56%
CMY	0.2314, 0.4392, 0.4353
CMYK	0.00, 0.27, 0.27, 0.23
HSL	359°, 31%, 66%
HSV	359°, 27%, 77%
XYZ	37.6215, 33.3943, 30.8484
YIQ	158.9610, 31.2670, 11.5470

# Conversions

## Conversions Part 2

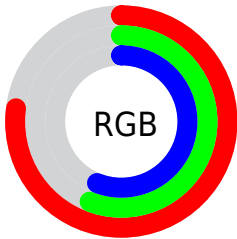
<b>Format</b>	<b>Color</b>
<a href="#">RYB</a>	<a href="#">196, 143, 144</a>
Decimal	<a href="#">12881808</a>
CIELab	<a href="#">64.48, 20.22, 7.40</a>
CIElCh	<a href="#">64, 21.535, 20.097</a>
Yxy	<a href="#">33.3943, 0.3693, 0.3278</a>
Android (android.graphics.Color)	<a href="#">4291071888 (0xFFC48F90)</a>
YUV	<a href="#">158.9610, -7.3758, 32.4832</a>
Hunter-Lab	<a href="#">57.7878, 15.0798, 8.8011</a>

# Details

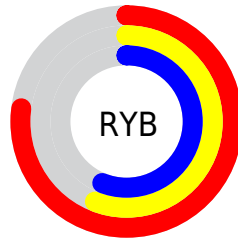
The Decimal color **12881808** is a light color, and the websafe version is hex **CC9999**. A complement of this color would be **9422019**, and the grayscale version is **10461087**.

A 20% lighter version of the original color is **16696774**, and **9264222** is the 20% darker color. If you saturate the color by 10%, you get **12876669**, and if you desaturate by 10%, it is **12886947**.

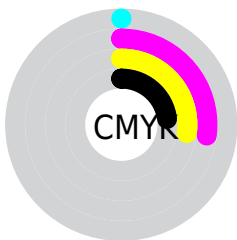
# Distribution



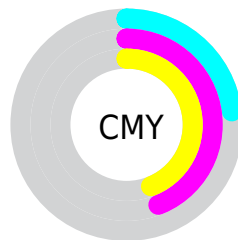
- Red (77%)
- Green (56%)
- Blue (56%)



- Red (77%)
- Yellow (56%)
- Blue (56%)



- Cyan (0%)
- Magenta (27%)
- Yellow (27%)
- Black (23%)



- Cyan (23%)
- Magenta (44%)
- Yellow (44%)

# Brightness & Saturation Gradients

These gradients show how the Decimal color 12881808 changes by changing the brightness by 10 percent. The first figure shows a shift by +10% for each color and the second figure -10%.

Similar to the brightness gradients but the following saturation gradients show a change of the Decimal color 12881808 by changing the saturation by 10% instead.



 12881808

 12881808

16777215

 11040118

 16696774

 9264222

 16769506

 7554118

16776958

 5844272

 4200475

 2818048

 0

 12881808

 12881808

 12876669

 12886947

 12871786

 12891830

 12866646

 12896970

 12861763

 12901853

 12856624

 12906992

 12851485

 12910591

 12846601

 12845060

# Harmonies

## Analogous

The Analogous color harmony consists of three colors that are next to each other on the color wheel.



12554148



12881808



12555136

# Triad

The Triadic color harmony groups three colors that are evenly spaced from another and form a triangle on the color wheel.



12881808



8889475



8233154

# Complementary

The Complementary color scheme is a pair of colors which are on the opposite of each other on the color wheel.



12881808



9422019

# Split Complementary

Split-complementary colors differ from the complementary color scheme. The scheme consists of three colors, the original color and two neighbors of the complement color.



6989241



12881808



7579541

# Square

The Square scheme is like the rectangle color scheme, but the four colors are evenly spaced on the color wheel.



12881808



10329976



6727593



9935552

# Rectangle

The Rectangle color scheme consists of four colors that form a rectangle on the color wheel.



12881808



11966329



6727593



7709376

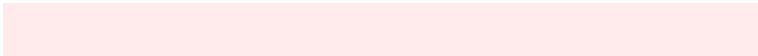


# Sweetspot

The Sweet Spot groups the original color and five complimentary colors.



12881808



16772075



12750788



8418163



0



8421504



# Same Dimension

The Same Dimension uses a secret algorithm to generate beautiful new colors.



12881808



16756143



12888207



6379351



10551299



2162689



# Inverse Universe

The Inverse Universe completely reimagines the original color for something new.



12881808



16756143



9415620



6379351



10551299

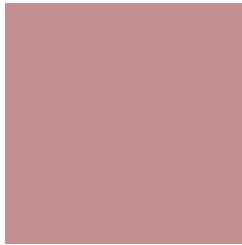


2162689



# Previews

## White Background



This preview shows how the Decimal color 12881808 looks on a white background.

## Color Contrast Check

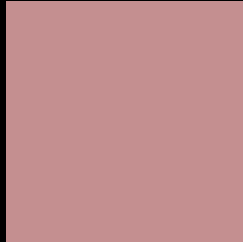
Large Text (above 18pt) WCAG AA × Fail

Any Text WCAG AA × Fail

Large Text (above 18pt) WCAG AAA × Fail

Any Text WCAG AAA × Fail

# Black Background



This preview shows how the Decimal color 12881808 looks on a black background.

## Color Contrast Check

Large Text (above 18pt) WCAG AA ✓ Pass

Any Text WCAG AA ✓ Pass

Large Text (above 18pt) WCAG AAA ✓ Pass

Any Text WCAG AAA ✓ Pass

If you want to check with other color combinations, try the [Color Contrast Checker](#).



## Decimal 12881808 Background



This preview shows how black text looks on a background with the Decimal color 12881808.



This preview shows how white text looks on a background with the Decimal color 12881808.

# Color Blindness Simulation

Color vision deficiency is a very complex topic, and I could not describe the different causes any better than Wikipedia does, so if you want to learn more, you should check out their [article about color blindness](#).

## Dichromacy



**Original Color**  
12881808

**Protanopia**  
10591383

**Deuteranopia**  
11638670



**Tritanopia**  
12947097

# Trichromacy



**Original Color**  
12881808

**Protanomaly**  
11442068

**Deuteranomaly**  
12096655

**Tritanomaly**  
12947094

# Monochromacy



**Original Color**  
12881808

**Achromatopsia**  
10461087

**Achromatomaly**  
11311514

# CSS Examples

## Text

The CSS property to change the color of the text to Decimal 12881808 is called "color". The color property can be set on classes, ids or directly on the HTML element.

This example shows how text in the color #C48F90 looks like.

```
.text, #text, p{  
    color:#C48F90  
}
```

If you want to add a text shadow in that color use the text-shadow property, you can generate a text shadow directly with our [CSS Text Shadow Generator](#).

Here you see how black text with a 4 pixel #C48F90 colored shadow looks like.

```
.shadow{ text-shadow: 4px 4px 2px #C48F90
}
```

## Border

The CSS property to change the border of an element to Decimal 12881808 is called "border". The border property can be set on classes, ids or directly on the HTML element.

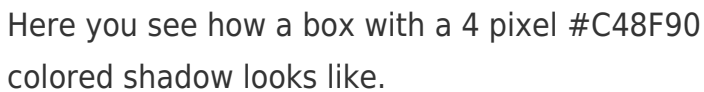
This example shows the color as border, it can be applied via the CSS property "border" or "border-color".

```
.border, #border, table{ border:4px solid
#C48F90 }
```

If only the border color should be changed use the property `border-color`.

```
.border{ border-color:#C48F90 }
```

If you want to add a box shadow in that color use:



Here you see how a box with a 4 pixel #C48F90 colored shadow looks like.

```
.boxshadow{ -moz-box-shadow:4px 4px 4px  
4px #C48F90; -webkit-box-shadow:4px 4px  
4px 4px #C48F90; box-shadow:4px 4px 4px  
4px #C48F90 }
```

# Background

The CSS property to change the background color of an element to Decimal 12881808 is called "background". The background property can be set on classes, ids or directly on the HTML element.

```
.background, #background, body{  
background:#C48F90 }
```

If only the background color should be changed can be used:

```
.background{ background-color:#C48F90 }
```

This example shows the color as background, it is applied via the CSS property "background".

To optimize and compress your CSS code, you can use our [online CSS compressor and optimizer](#) based on csstidy. If you want to create a linear or radial gradient as background or border, check our [CSS Gradient Generator](#).



Hey! You found this booklet interesting? Support Converting Colors with the new Membership Option!

The pro membership hides all ads, plus gives you double the colors in the color bucket, and more awesome pro features!

**[Learn more, Memberships starting at \\$2.50/m!](#)**

**Follow me  
on Twitter!**

@ConvertingColor