

# Converting Colors

Decimal(12884110)

Have a look what the booklet for  
Decimal(12884110) contains.

<b>Decimal(12884110)</b> .....	3
<i><b>Conversions</b></i> .....	4
<i><b>Details</b></i> .....	6
<i><b>Harmonies</b></i> .....	11
<i><b>Previews</b></i> .....	23
<i><b>Color Blindness Simulation</b></i> .....	26
<i><b>CSS Examples</b></i> .....	29

# **Color**

**Decimal(12884110)**

# Conversions

## Conversions Part 1

Format	Color
Hex	C4988E
RGB	196, 152, 142
RGB Percent	77%, 60%, 56%
CMY	0.2314, 0.4039, 0.4431
CMYK	0.00, 0.22, 0.28, 0.23
HSL	11°, 31%, 66%
HSV	11°, 28%, 77%
XYZ	38.8757, 36.1452, 30.5189
YIQ	164.0160, 29.4340, 6.2180

# Conversions

## Conversions Part 2

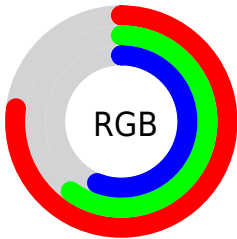
Format	Color
R <sub>Y</sub> B	196, 154, 142
Decimal	12884110
CIE Lab	66.63, 14.98, 11.58
CIE LCh	67, 18.936, 37.696
Yxy	36.1452, 0.3684, 0.3425
Android (android.graphics.Color)	4291074190 (0xFFC4988E)
YUV	164.0160, -10.8539, 28.0500
Hunter-Lab	60.1209, 10.2110, 11.9875

# Details

The Decimal color **12884110** is a light color, and the websafe version is hex **CC9999**. A complement of this color would be **9353924**, and the grayscale version is **10790052**.

A 20% lighter version of the original color is **16633540**, and **9266524** is the 20% darker color. If you saturate the color by 10%, you get **12879994**, and if you desaturate by 10%, it is **12888226**.

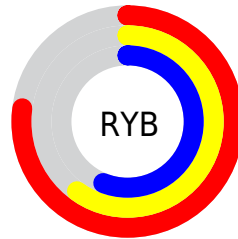
# Distribution



Red (77%)

Green (60%)

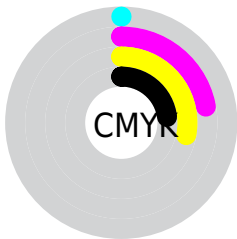
Blue (56%)



Red (77%)

Yellow (60%)

Blue (56%)

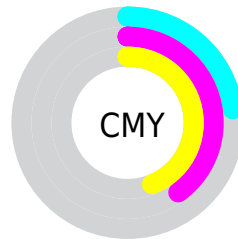


Cyan (0%)

Magenta (22%)

Yellow (28%)

Black (23%)



Cyan (23%)

Magenta (40%)

Yellow (44%)

# Brightness & Saturation Gradients

These gradients show how the Decimal color 12884110 changes by changing the brightness by 10 percent. The first figure shows a shift by +10% for each color and the second figure -10%.

Similar to the brightness gradients but the following saturation gradients show a change of the Decimal color 12884110 by changing the saturation by 10% instead.



 12884110

 12884110

16777215

 11042420

 16633540

 9266524

 16772064

 7556420

16777212

 5846574

 4268057

 2820864

 65536

 0

 12884110

 12884110

 12879994

 12888226

 12875879

 12892341

 12871763

 12896457

 12867648

 12900572

 12863532

 12904688

 12859416

 12908799

 12855301

 12910591

 12854272

# Harmonies

## Analogous

The Analogous color harmony consists of three colors that are next to each other on the color wheel.



12949150



12884110



12295555

# Triad

The Triadic color harmony groups three colors that are evenly spaced from another and form a triangle on the color wheel.



12884110



8760213



9740995

# Complementary

The Complementary color scheme is a pair of colors which are on the opposite of each other on the color wheel.



12884110



9353924

# Split Complementary

Split-complementary colors differ from the complementary color scheme. The scheme consists of three colors, the original color and two neighbors of the complement color.



8366017



12884110



7842982

# Square

The Square scheme is like the rectangle color scheme, but the four colors are evenly spaced on the color wheel.



12884110



10004359



7646134



11246781

# Rectangle

The Rectangle color scheme consists of four colors that form a rectangle on the color wheel.



12884110



11575424



7646134



9282756

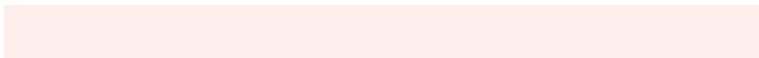


# Sweetspot

The Sweet Spot groups the original color and five complimentary colors.



12884110



16772843



12881594



8418675



0



8421504



# Same Dimension

The Same Dimension uses a secret algorithm to generate beautiful new colors.



12884110



16759467



12891022



6379863



10558976



2164224

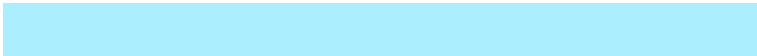


# Inverse Universe

The Inverse Universe completely reimagines the original color for something new.



9353924



11268095



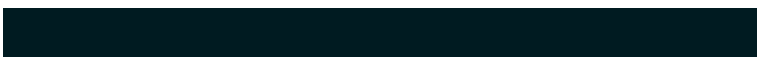
9347012



5726049



33697

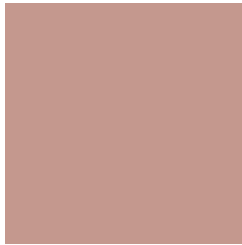


6945



# Previews

## White Background



This preview shows how the Decimal color 12884110 looks on a white background.

## Color Contrast Check

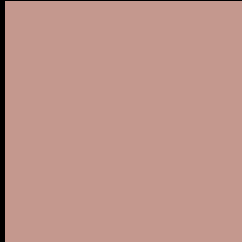
Large Text (above 18pt) WCAG AA × Fail

Any Text WCAG AA × Fail

Large Text (above 18pt) WCAG AAA × Fail

Any Text WCAG AAA × Fail

# Black Background



This preview shows how the Decimal color 12884110 looks on a black background.

## Color Contrast Check

Large Text (above 18pt) WCAG AA ✓ Pass

Any Text WCAG AA ✓ Pass

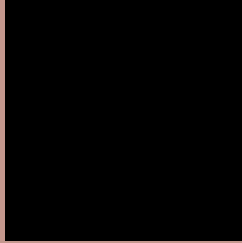
Large Text (above 18pt) WCAG AAA ✓ Pass

Any Text WCAG AAA ✓ Pass

If you want to check with other color combinations, try the [Color Contrast Checker](#).



## Decimal 12884110 Background



This preview shows how black text looks on a background with the Decimal color 12884110.



This preview shows how white text looks on a background with the Decimal color 12884110.

# Color Blindness Simulation

Color vision deficiency is a very complex topic, and I could not describe the different causes any better than Wikipedia does, so if you want to learn more, you should check out their [article about color blindness](#).


## Dichromacy



**Original Color**  
12884110

**Protanopia**  
11117203

**Deuteranopia**  
12229773



**Tritanopia**  
13014433

# Trichromacy



**Original Color**  
12884110

**Protanomaly**  
11771537

**Deuteranomaly**  
12491661

**Tritanomaly**  
12949146

# Monochromacy



**Original Color**  
12884110

**Achromatopsia**  
10790052

**Achromatomaly**  
11575452

# CSS Examples

## Text

The CSS property to change the color of the text to Decimal 12884110 is called "color". The color property can be set on classes, ids or directly on the HTML element.

This example shows how text in the color #C4988E looks like.

```
.text, #text, p{  
  color:#C4988E  
}
```

If you want to add a text shadow in that color use the text-shadow property, you can generate a text shadow directly with our [CSS Text Shadow Generator](#).

Here you see how black text with a 4 pixel #C4988E colored shadow looks like.

```
.shadow{ text-shadow: 4px 4px 2px #C4988E
}
```

## Border

The CSS property to change the border of an element to Decimal 12884110 is called "border". The border property can be set on classes, ids or directly on the HTML element.

This example shows the color as border, it can be applied via the CSS property "border" or "border-color".

```
.border, #border, table{ border:4px solid
#C4988E }
```

If only the border color should be changed use the property `border-color`.

```
.border{ border-color:#C4988E }
```

If you want to add a box shadow in that color use:

Here you see how a box with a 4 pixel #C4988E colored shadow looks like.

```
.boxshadow{ -moz-box-shadow:4px 4px 4px  
4px #C4988E; -webkit-box-shadow:4px 4px  
4px 4px #C4988E; box-shadow:4px 4px 4px  
4px #C4988E }
```

# Background

The CSS property to change the background color of an element to Decimal 12884110 is called "background". The background property can be set on classes, ids or directly on the HTML element.

```
.background, #background, body{  
background:#C4988E }
```

If only the background color should be changed can be used:

```
.background{ background-color:#C4988E }
```

This example shows the color as background, it is applied via the CSS property "background".

To optimize and compress your CSS code, you can use our [online CSS compressor and optimizer](#) based on csstidy. If you want to create a linear or radial gradient as background or border, check our [CSS Gradient Generator](#).



Hey! You found this booklet interesting? Support Converting Colors with the new Membership Option!

The pro membership hides all ads, plus gives you double the colors in the color bucket, and more awesome pro features!

**[Learn more, Memberships starting at \\$2.50/m!](#)**

**Follow me  
on Twitter!**

@ConvertingColor