

Converting Colors

Decimal(12884889)

Have a look what the booklet for
Decimal(12884889) contains.

Decimal(12884889)	3
<i>Conversions</i>	4
<i>Details</i>	6
<i>Harmonies</i>	11
<i>Previews</i>	23
<i>Color Blindness Simulation</i>	26
<i>CSS Examples</i>	29

Color

Decimal(12884889)

Conversions

Conversions Part 1	
Format	Color
Hex	C49B99
RGB	196, 155, 153
RGB Percent	77%, 61%, 60%
CMY	0.2314, 0.3922, 0.4000
CMYK	0.00, 0.21, 0.22, 0.23
HSL	3°, 27%, 68%
HSV	3°, 22%, 77%
XYZ	40.2361, 37.4784, 35.2504
YIQ	167.0310, 25.0780, 8.0700

Conversions

Conversions Part 2

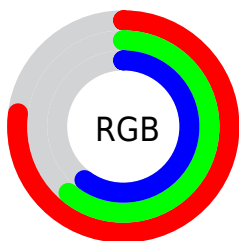
Format	Color
RYB	196, 155, 153
Decimal	12884889
CIELab	67.63, 14.94, 6.87
CIELCh	68, 16.440, 24.691
Yxy	37.4784, 0.3562, 0.3318
Android (android.graphics.Color)	4291074969 (0xFFC49B99)
YUV	167.0310, -6.9173, 25.4058
Hunter-Lab	61.2196, 10.1834, 8.7144

Details

The Decimal color **12884889** is a light color, and the websafe version is hex **CC9999**. A complement of this color would be **10076868**, and the grayscale version is **10987431**.

A 20% lighter version of the original color is **16634575**, and **9332838** is the 20% darker color. If you saturate the color by 10%, you get **12880005**, and if you desaturate by 10%, it is **12889773**.

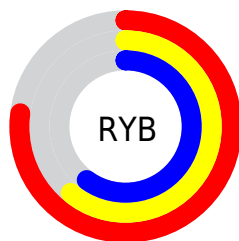
Distribution



Red (77%)

Green (61%)

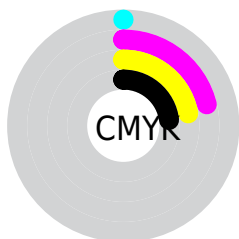
Blue (60%)



Red (77%)

Yellow (61%)

Blue (60%)

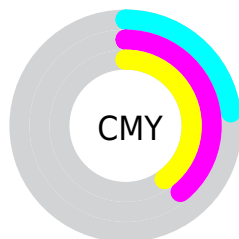


Cyan (0%)

Magenta (21%)

Yellow (22%)

Black (23%)



Cyan (23%)

Magenta (39%)

Yellow (40%)

Brightness & Saturation Gradients

These gradients show how the Decimal color 12884889 changes by changing the brightness by 10 percent. The first figure shows a shift by +10% for each color and the second figure -10%.

Similar to the brightness gradients but the following saturation gradients show a change of the Decimal color 12884889 by changing the saturation by 10% instead.

 12884889

16777215

 16634575

 16772843

 12884889

 11043199

 9332838

 7556942

 5912631

 4334114

 2821644

 786432

 0

 12884889

 12884889

 12880005

 12889773

 12875378

 12894400

 12870494

 12899284

 12865611

 12904167

 12860983

 12908795

 12856099

 12910591

 12851216

 12847360

Harmonies

Analogous

The Analogous color harmony consists of three colors that are next to each other on the color wheel.



12688296



12884889



12557965

Triad

The Triadic color harmony groups three colors that are evenly spaced from another and form a triangle on the color wheel.



12884889



9612179



9545666

Complementary

The Complementary color scheme is a pair of colors which are on the opposite of each other on the color wheel.



12884889



10076868

Split Complementary

Split-complementary colors differ from the complementary color scheme. The scheme consists of three colors, the original color and two neighbors of the complement color.



8563644



12884889



8695201

Square

The Square scheme is like the rectangle color scheme, but the four colors are evenly spaced on the color wheel.



12884889



10725514



8236465



10789568

Rectangle

The Rectangle color scheme consists of four colors that form a rectangle on the color wheel.



12884889



12099977



8236465



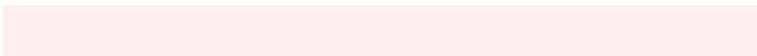
9152705

Sweetspot

The Sweet Spot groups the original color and five complimentary colors.



12884889



16772845



12884419



8418933



0



8421504

Same Dimension

The Same Dimension uses a secret algorithm to generate beautiful new colors.



12884889



16761021



12890265



6379607



10553088



2163200

Inverse Universe

The Inverse Universe completely reimagines the original color for something new.



10076868



12451071



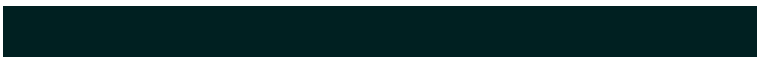
10071492



5726305



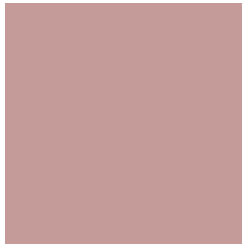
39329



8225

Previews

White Background



This preview shows how the Decimal color 12884889 looks on a white background.

Color Contrast Check

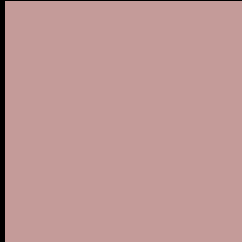
Large Text (above 18pt) WCAG AA × Fail

Any Text WCAG AA × Fail

Large Text (above 18pt) WCAG AAA × Fail

Any Text WCAG AAA × Fail

Black Background



This preview shows how the Decimal color 12884889 looks on a black background.

Color Contrast Check

Large Text (above 18pt) WCAG AA ✓ Pass

Any Text WCAG AA ✓ Pass

Large Text (above 18pt) WCAG AAA ✓ Pass

Any Text WCAG AAA ✓ Pass

If you want to check with other color combinations, try the [Color Contrast Checker](#).

Decimal 12884889 Background



This preview shows how black text looks on a background with the Decimal color 12884889.



This preview shows how white text looks on a background with the Decimal color 12884889.

Color Blindness Simulation

Color vision deficiency is a very complex topic, and I could not describe the different causes any better than Wikipedia does, so if you want to learn more, you should check out their [article about color blindness](#).

Dichromacy



Original Color

[12884889](#)

Protanopia

[11183262](#)





Deuteranopia

[12230552](#)



Tritanopia
12949925

Trichromacy

	Original Color 12884889
	Protanomaly 11772316
	Deuteranomaly 12492440
	Tritanomaly 12950177

Monochromacy

	Original Color 12884889
	Achromatopsia 10987431
	Achromatomaly 11707298

CSS Examples

Text

The CSS property to change the color of the text to Decimal 12884889 is called "color". The color property can be set on classes, ids or directly on the HTML element.

This example shows how text in the color #C49B99 looks like.

```
.text, #text, p{  
    color:#C49B99  
}
```

If you want to add a text shadow in that color use the text-shadow property, you can generate a text shadow directly with our [CSS Text Shadow Generator](#).

Here you see how black text with a 4 pixel #C49B99 colored shadow looks like.

```
.shadow{ text-shadow: 4px 4px 2px #C49B99
}
```

Border

The CSS property to change the border of an element to Decimal 12884889 is called "border". The border property can be set on classes, ids or directly on the HTML element.

This example shows the color as border, it can be applied via the CSS property "border" or "border-color".

```
.border, #border, table{ border:4px solid
#C49B99 }
```

If only the border color should be changed use the property border-color.

```
.border{ border-color:#C49B99 }
```

If you want to add a box shadow in that color use:

Here you see how a box with a 4 pixel #C49B99 colored shadow looks like.

```
.boxshadow{ -moz-box-shadow:4px 4px 4px  
4px #C49B99; -webkit-box-shadow:4px 4px  
4px 4px #C49B99; box-shadow:4px 4px 4px  
4px #C49B99 }
```

Background

The CSS property to change the background color of an element to Decimal 12884889 is called "background". The background property can be set on classes, ids or directly on the HTML element.

```
.background, #background, body{  
background:#C49B99 }
```

If only the background color should be changed can be used:

```
.background{ background-color:#C49B99 }
```

This example shows the color as background, it is applied via the CSS property "background".

To optimize and compress your CSS code, you can use our [online CSS compressor and optimizer](#) based on csstidy. If you want to create a linear or radial gradient as background or border, check our [CSS Gradient Generator](#).

Hey! You found this booklet
interesting? Support Converting
Colors with the new Membership
Option!

The pro membership hides all ads, plus gives you
double the colors in the color bucket, and more
awesome pro features!

[Learn more, Memberships starting at \\$2.50/m!](#)

**Follow me
on Twitter!**

@ConvertingColor