

Converting Colors

Decimal(12886138)

Have a look what the booklet for
Decimal(12886138) contains.

Decimal(12886138)	3
<i>Conversions</i>	4
<i>Details</i>	6
<i>Harmonies</i>	11
<i>Previews</i>	23
<i>Color Blindness Simulation</i>	26
<i>CSS Examples</i>	29

Color

Decimal(12886138)

Conversions

Conversions Part 1

Format	Color
Hex	C4A07A
RGB	196, 160, 122
RGB Percent	77%, 63%, 48%
CMY	0.2314, 0.3725, 0.5216
CMYK	0.00, 0.18, 0.38, 0.23
HSL	31°, 39%, 62%
HSV	31°, 38%, 77%
XYZ	38.8486, 38.2825, 23.7541
YIQ	166.4320, 33.6540, -4.1860

Conversions

Conversions Part 2

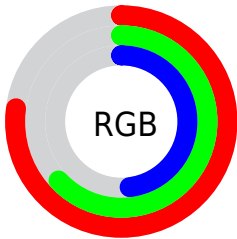
Format	Color
RYB	192, 196, 122
Decimal	12886138
CIELab	68.23, 8.01, 24.82
CIElCh	68, 26.083, 72.113
Yxy	38.2825, 0.3851, 0.3795
Android (android.graphics.Color)	4291076218 (0xFFC4A07A)
YUV	166.4320, -21.9050, 25.9311
Hunter-Lab	61.8729, 3.7987, 20.5485

Details

The Decimal color **12886138** is a light color, and the websafe version is hex **CC9966**. A complement of this color would be **8036036**, and the grayscale version is **10987431**.

A 20% lighter version of the original color is **16701359**, and **9268553** is the 20% darker color. If you saturate the color by 10%, you get **12883558**, and if you desaturate by 10%, it is **12888718**.

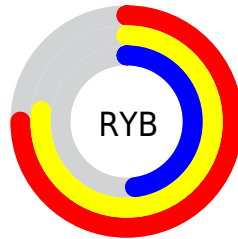
Distribution



Red (77%)

Green (63%)

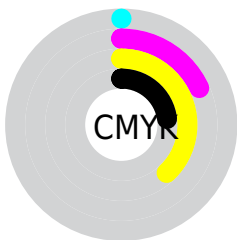
Blue (48%)



Red (75%)

Yellow (77%)

Blue (48%)

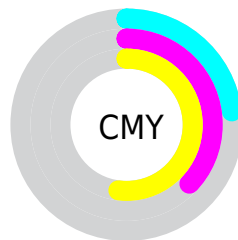


Cyan (0%)

Magenta (18%)

Yellow (38%)

Black (23%)



Cyan (23%)

Magenta (37%)

Yellow (52%)

Brightness & Saturation Gradients

These gradients show how the Decimal color 12886138 changes by changing the brightness by 10 percent. The first figure shows a shift by +10% for each color and the second figure -10%.

Similar to the brightness gradients but the following saturation gradients show a change of the Decimal color 12886138 by changing the saturation by 10% instead.

 12886138

 12886138

16777215

 11044449

 16701359

 9268553

 16774090

 7492658

 16777190

 5782812

 4204292

 2626304

 65536

 0

 12886138

 12886138

 12883558

 12888718

 12881235

 12891041

 12878655

 12893621

 12876332

 12895944

 12873752

 12898524

 12871428

 12900848

 12870912

 12903423

 12905727

 12908287

Harmonies

Analogous

The Analogous color harmony consists of three colors that are next to each other on the color wheel.



13867400



12886138



11446392

Triad

The Triadic color harmony groups three colors that are evenly spaced from another and form a triangle on the color wheel.



12886138



6599855



11967945

Complementary

The Complementary color scheme is a pair of colors which are on the opposite of each other on the color wheel.



12886138



8036036

Split Complementary

Split-complementary colors differ from the complementary color scheme. The scheme consists of three colors, the original color and two neighbors of the complement color.



9872852



12886138



6402757

Square

The Square scheme is like the rectangle color scheme, but the four colors are evenly spaced on the color wheel.



12886138



7975575



7777747



13408181

Rectangle

The Rectangle color scheme consists of four colors that form a rectangle on the color wheel.



12886138



10267774



7777747



11313358

Sweetspot

The Sweet Spot groups the original color and five complimentary colors.



12886138



16773603



12876447



8419183



0



8421504

Same Dimension

The Same Dimension uses a secret algorithm to generate beautiful new colors.



12886138



16762764



12895354



6380631



10572288



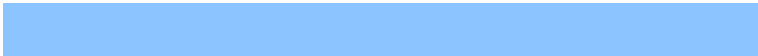
2167040

Inverse Universe

The Inverse Universe completely reimagines the original color for something new.



8036036



9225471



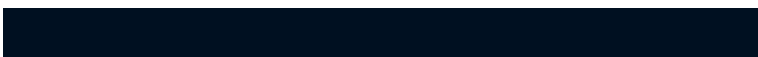
8026820



5725281



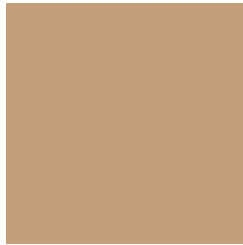
20129



4129

Previews

White Background



This preview shows how the Decimal color 12886138 looks on a white background.

Color Contrast Check

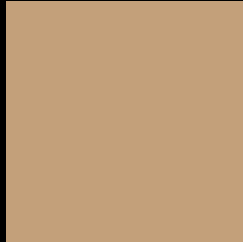
Large Text (above 18pt) WCAG AA × Fail

Any Text WCAG AA × Fail

Large Text (above 18pt) WCAG AAA × Fail

Any Text WCAG AAA × Fail

Black Background



This preview shows how the Decimal color 12886138 looks on a black background.

Color Contrast Check

Large Text (above 18pt) WCAG AA ✓ Pass

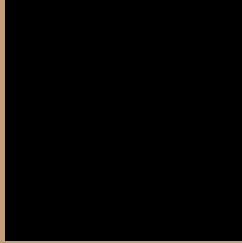
Any Text WCAG AA ✓ Pass

Large Text (above 18pt) WCAG AAA ✓ Pass

Any Text WCAG AAA ✓ Pass

If you want to check with other color combinations, try the [Color Contrast Checker](#).

Decimal 12886138 Background



This preview shows how black text looks on a background with the Decimal color 12886138.




This preview shows how white text looks on a background with the Decimal color 12886138.

Color Blindness Simulation

Color vision deficiency is a very complex topic, and I could not describe the different causes any better than Wikipedia does, so if you want to learn more, you should check out their [article about color blindness](#).

Dichromacy





Tritanopia
13212326

Trichromacy



Original Color
12886138

Protanomaly
12166268

Deuteranomaly
12951674

Tritanomaly
13081750

Monochromacy



Original Color
12886138

Achromatopsia
10921638

Achromatomaly
11642006

CSS Examples

Text

The CSS property to change the color of the text to Decimal 12886138 is called "color". The color property can be set on classes, ids or directly on the HTML element.

This example shows how text in the color #C4A07A looks like.

```
.text, #text, p{  
    color:#C4A07A  
}
```

If you want to add a text shadow in that color use the text-shadow property, you can generate a text shadow directly with our [CSS Text Shadow Generator](#).

Here you see how black text with a 4 pixel #C4A07A colored shadow looks like.

```
.shadow{ text-shadow: 4px 4px 2px #C4A07A
}
```

Border

The CSS property to change the border of an element to Decimal 12886138 is called "border". The border property can be set on classes, ids or directly on the HTML element.

This example shows the color as border, it can be applied via the CSS property "border" or "border-color".

```
.border, #border, table{ border:4px solid
#C4A07A }
```

If only the border color should be changed use the property `border-color`.

```
.border{ border-color:#C4A07A }
```

If you want to add a box shadow in that color use:

Here you see how a box with a 4 pixel #C4A07A colored shadow looks like.

```
.boxshadow{ -moz-box-shadow:4px 4px 4px  
4px #C4A07A; -webkit-box-shadow:4px 4px  
4px 4px #C4A07A; box-shadow:4px 4px 4px  
4px #C4A07A }
```

Background

The CSS property to change the background color of an element to Decimal 12886138 is called "background". The background property can be set on classes, ids or directly on the HTML element.

```
.background, #background, body{  
background:#C4A07A }
```

If only the background color should be changed can be used:

```
.background{ background-color:#C4A07A }
```

This example shows the color as background, it is applied via the CSS property "background".

To optimize and compress your CSS code, you can use our [online CSS compressor and optimizer](#) based on csstidy. If you want to create a linear or radial gradient as background or border, check our [CSS Gradient Generator](#).

Hey! You found this booklet interesting? Support Converting Colors with the new Membership Option!

The pro membership hides all ads, plus gives you double the colors in the color bucket, and more awesome pro features!

[Learn more, Memberships starting at \\$2.50/m!](#)

**Follow me
on Twitter!**

@ConvertingColor