

# Converting Colors

Decimal(12887195)

Have a look what the booklet for  
Decimal(12887195) contains.

<b>Decimal(12887195)</b> .....	3
<i><b>Conversions</b></i> .....	4
<i><b>Details</b></i> .....	6
<i><b>Harmonies</b></i> .....	11
<i><b>Previews</b></i> .....	23
<i><b>Color Blindness Simulation</b></i> .....	26
<i><b>CSS Examples</b></i> .....	29

# **Color**

**Decimal(12887195)**

# Conversions

## Conversions Part 1

Format	Color
Hex	C4A49B
RGB	196, 164, 155
RGB Percent	77%, 64%, 61%
CMY	0.2314, 0.3569, 0.3922
CMYK	0.00, 0.16, 0.21, 0.23
HSL	13°, 26%, 69%
HSV	13°, 21%, 77%
XYZ	41.9568, 40.6532, 36.6458
YIQ	172.5420, 21.9610, 3.9850

# Conversions

## Conversions Part 2

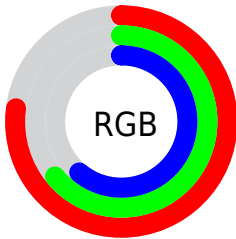
Format	Color
<a href="#">RYB</a>	<a href="#">196, 167, 155</a>
Decimal	<a href="#">12887195</a>
<a href="#">CIELab</a>	<a href="#">69.93, 10.31, 9.04</a>
<a href="#">CIElCh</a>	<a href="#">70, 13.712, 41.248</a>
<a href="#">Yxy</a>	<a href="#">40.6532, 0.3518, 0.3409</a>
<a href="#">Android (android.graphics.Color)</a>	<a href="#">4291077275 (0xFFC4A49B)</a>
<a href="#">YUV</a>	<a href="#">172.5420, -8.6482, 20.5727</a>
<a href="#">Hunter-Lab</a>	<a href="#">63.7599, 5.8810, 10.5551</a>

# Details

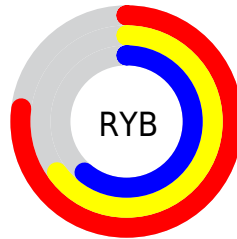
The Decimal color **12887195** is a light color, and the websafe version is hex **CC9999**. A complement of this color would be **10206148**, and the grayscale version is **11382189**.

A 20% lighter version of the original color is **16636881**, and **9334888** is the 20% darker color. If you saturate the color by 10%, you get **12883335**, and if you desaturate by 10%, it is **12891055**.

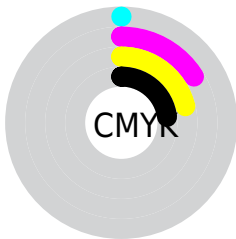
# Distribution



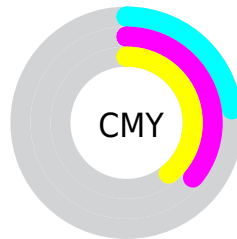
- Red (77%)
- Green (64%)
- Blue (61%)



- Red (77%)
- Yellow (65%)
- Blue (61%)



- Cyan (0%)
- Magenta (16%)
- Yellow (21%)
- Black (23%)



- Cyan (23%)
- Magenta (36%)
- Yellow (39%)

# Brightness & Saturation Gradients

These gradients show how the Decimal color 12887195 changes by changing the brightness by 10 percent. The first figure shows a shift by +10% for each color and the second figure -10%.

Similar to the brightness gradients but the following saturation gradients show a change of the Decimal color 12887195 by changing the saturation by 10% instead.



 12887195

 12887195

16777215

 11045505

 16636881

 9334888

 16775406

 7624784

 5980217

 4401699

 2889230

 1441792

 0

 12887195

 12887195

 12883335

 12891055

 12879220

 12895170

 12875360

 12899030

 12871501

 12902889

 12867641

 12906749

 12863525

 12910591

 12859666

 12856064

# Harmonies

## Analogous

The Analogous color harmony consists of three colors that are next to each other on the color wheel.



12952231



12887195



12363668

# Triad

The Triadic color harmony groups three colors that are evenly spaced from another and form a triangle on the color wheel.



12887195



9810594



10726083

# Complementary

The Complementary color scheme is a pair of colors which are on the opposite of each other on the color wheel.



12887195



10206148

# Split Complementary

Split-complementary colors differ from the complementary color scheme. The scheme consists of three colors, the original color and two neighbors of the complement color.



9809602



12887195



9220783

# Square

The Square scheme is like the rectangle color scheme, but the four colors are evenly spaced on the color wheel.



12887195



10661784



9220539



11773630

# Rectangle

The Rectangle color scheme consists of four colors that form a rectangle on the color wheel.



12887195



11905682



9220539



10398915



# Sweetspot

The Sweet Spot groups the original color and five complimentary colors.



12887195



16774128



12884923



8419703



0



8421504



# Same Dimension

The Same Dimension uses a secret algorithm to generate beautiful new colors.



12887195



16764351



12892315



6379863



10560256



2164480

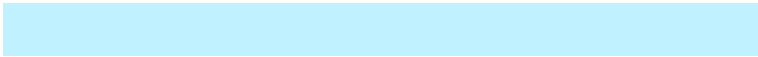


# Inverse Universe

The Inverse Universe completely reimagines the original color for something new.



10206148



12579327



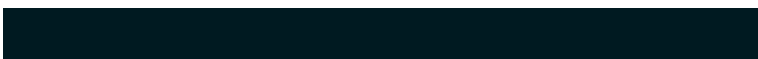
10201028



5726049



32161

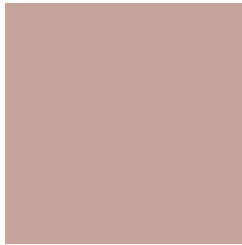


6689



# Previews

## White Background



This preview shows how the Decimal color 12887195 looks on a white background.

## Color Contrast Check

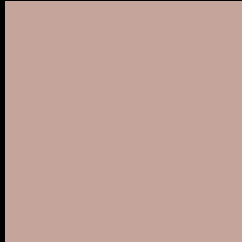
Large Text (above 18pt) WCAG AA × Fail

Any Text WCAG AA × Fail

Large Text (above 18pt) WCAG AAA × Fail

Any Text WCAG AAA × Fail

# Black Background



This preview shows how the Decimal color 12887195 looks on a black background.

## Color Contrast Check

Large Text (above 18pt) WCAG AA ✓ Pass

Any Text WCAG AA ✓ Pass

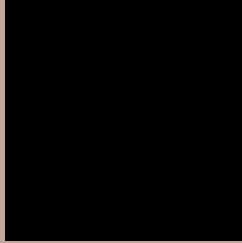
Large Text (above 18pt) WCAG AAA ✓ Pass

Any Text WCAG AAA ✓ Pass

If you want to check with other color combinations, try the [Color Contrast Checker](#).



## Decimal 12887195 Background



This preview shows how black text looks on a background with the Decimal color 12887195.



This preview shows how white text looks on a background with the Decimal color 12887195.

# Color Blindness Simulation

Color vision deficiency is a very complex topic, and I could not describe the different causes any better than Wikipedia does, so if you want to learn more, you should check out their [article about color blindness](#).

## Dichromacy



**Original Color**  
12887195

**Protanopia**  
11643550

**Deuteranopia**  
12756379



**Tritanopia**  
13017518

# Trichromacy



**Original Color**  
12887195

**Protanomaly**  
12101789

**Deuteranomaly**  
12821915

**Tritanomaly**  
12952231

# Monochromacy



**Original Color**  
12887195

**Achromatopsia**  
11382189

**Achromatomaly**  
11905702

# CSS Examples

## Text

The CSS property to change the color of the text to Decimal 12887195 is called "color". The color property can be set on classes, ids or directly on the HTML element.

This example shows how text in the color #C4A49B looks like.

```
.text, #text, p{  
    color:#C4A49B  
}
```

If you want to add a text shadow in that color use the text-shadow property, you can generate a text shadow directly with our [CSS Text Shadow Generator](#).

Here you see how black text with a 4 pixel #C4A49B colored shadow looks like.

```
.shadow{ text-shadow: 4px 4px 2px #C4A49B
}
```

## Border

The CSS property to change the border of an element to Decimal 12887195 is called "border". The border property can be set on classes, ids or directly on the HTML element.

This example shows the color as border, it can be applied via the CSS property "border" or "border-color".

```
.border, #border, table{ border:4px solid
#C4A49B }
```

If only the border color should be changed use the property `border-color`.

```
.border{ border-color:#C4A49B }
```

If you want to add a box shadow in that color use:

Here you see how a box with a 4 pixel #C4A49B colored shadow looks like.

```
.boxshadow{ -moz-box-shadow:4px 4px 4px  
4px #C4A49B; -webkit-box-shadow:4px 4px  
4px 4px #C4A49B; box-shadow:4px 4px 4px  
4px #C4A49B }
```

# Background

The CSS property to change the background color of an element to Decimal 12887195 is called "background". The background property can be set on classes, ids or directly on the HTML element.

```
.background, #background, body{  
background:#C4A49B }
```

If only the background color should be changed can be used:

```
.background{ background-color:#C4A49B }
```

This example shows the color as background, it is applied via the CSS property "background".

To optimize and compress your CSS code, you can use our [online CSS compressor and optimizer](#) based on csstidy. If you want to create a linear or radial gradient as background or border, check our [CSS Gradient Generator](#).



Hey! You found this booklet interesting? Support Converting Colors with the new Membership Option!

The pro membership hides all ads, plus gives you double the colors in the color bucket, and more awesome pro features!

**[Learn more, Memberships starting at \\$2.50/m!](#)**

**Follow me  
on Twitter!**

@ConvertingColor