

Converting Colors

Decimal(12888740)

Have a look what the booklet for
Decimal(12888740) contains.

Decimal(12888740)	3
<i>Conversions</i>	4
<i>Details</i>	6
<i>Harmonies</i>	11
<i>Previews</i>	23
<i>Color Blindness Simulation</i>	26
<i>CSS Examples</i>	29

Color

Decimal(12888740)

Conversions

Conversions Part 1

Format	Color
Hex	C4AAA4
RGB	196, 170, 164
RGB Percent	77%, 67%, 64%
CMY	0.2314, 0.3333, 0.3569
CMYK	0.00, 0.13, 0.16, 0.23
HSL	11°, 21%, 71%
HSV	11°, 16%, 77%
XYZ	43.8405, 43.1655, 41.1431
YIQ	177.0900, 17.4220, 3.6460

Conversions

Conversions Part 2

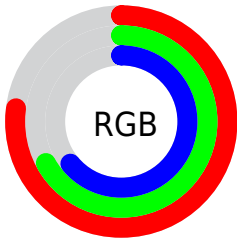
Format	Color
RYB	196, 171, 164
Decimal	12888740
CIELab	71.67, 8.45, 6.56
CIElCh	72, 10.694, 37.833
Yxy	43.1655, 0.3421, 0.3368
Android (android.graphics.Color)	4291078820 (0xFFC4AAA4)
YUV	177.0900, -6.4534, 16.5841
Hunter-Lab	65.7005, 4.1333, 8.8616

Details

The Decimal color **12888740** is a light color, and the websafe version is hex **CC9999**. A complement of this color would be **10796740**, and the grayscale version is **11645361**.

A 20% lighter version of the original color is **16638427**, and **9336432** is the 20% darker color. If you saturate the color by 10%, you get **12884624**, and if you desaturate by 10%, it is **12892856**.

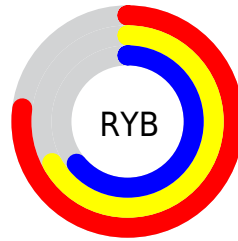
Distribution



Red (77%)

Green (67%)

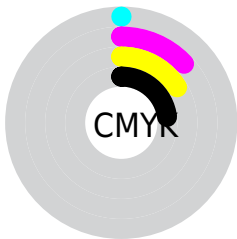
Blue (64%)



Red (77%)

Yellow (67%)

Blue (64%)

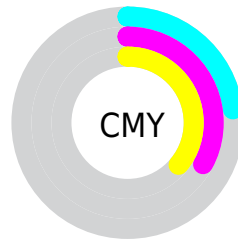


Cyan (0%)

Magenta (13%)

Yellow (16%)

Black (23%)



Cyan (23%)

Magenta (33%)

Yellow (36%)

Brightness & Saturation Gradients


These gradients show how the Decimal color 12888740 changes by changing the brightness by 10 percent. The first figure shows a shift by +10% for each color and the second figure -10%.

Similar to the brightness gradients but the following saturation gradients show a change of the Decimal color 12888740 by changing the saturation by 10% instead.

 12888740

 12888740

16777215

 11112586

 16638427

 9336432

 16776951

 7626072

 5981761

 4402987

 2955798

 1638400

 0

 12888740

 12888740

 12884624

 12892856

 12880509

 12896971

 12876393

 12901087

 12872278

 12905202

 12868162

 12909311

 12864046

 12910591

 12860187

 12856071

 12854528

Harmonies

Analogous

The Analogous color harmony consists of three colors that are next to each other on the color wheel.



12888493



12888740



12496286

Triad

The Triadic color harmony groups three colors that are evenly spaced from another and form a triangle on the color wheel.



12888740



10466728



11120835

Complementary

The Complementary color scheme is a pair of colors which are on the opposite of each other on the color wheel.



12888740



10796740

Split Complementary

Split-complementary colors differ from the complementary color scheme. The scheme consists of three colors, the original color and two neighbors of the complement color.



10400705



12888740



10007986

Square

The Square scheme is like the rectangle color scheme, but the four colors are evenly spaced on the color wheel.



12888740



11187104



10007995



11906239

Rectangle

The Rectangle color scheme consists of four colors that form a rectangle on the color wheel.



12888740



12103580



10007995



10858947

Sweetspot

The Sweet Spot groups the original color and five complimentary colors.



12888740



16774642



12887230



8419704



0



8421504

Same Dimension

The Same Dimension uses a secret algorithm to generate beautiful new colors.



12888740



16766668



12892836



6379863



10558976



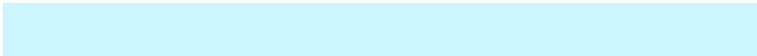
2164224

Inverse Universe

The Inverse Universe completely reimagines the original color for something new.



10796740



13432319



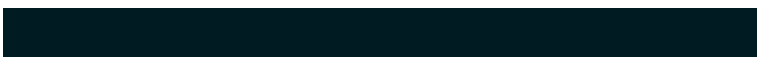
10792644



5726049



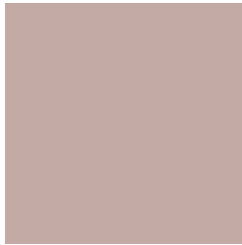
33697



6945

Previews

White Background



This preview shows how the Decimal color 12888740 looks on a white background.

Color Contrast Check

Large Text (above 18pt) WCAG AA × Fail

Any Text WCAG AA × Fail

Large Text (above 18pt) WCAG AAA × Fail

Any Text WCAG AAA × Fail

Black Background



This preview shows how the Decimal color 12888740 looks on a black background.

Color Contrast Check

Large Text (above 18pt) WCAG AA ✓ Pass

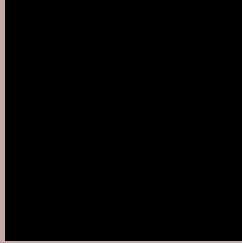
Any Text WCAG AA ✓ Pass

Large Text (above 18pt) WCAG AAA ✓ Pass

Any Text WCAG AAA ✓ Pass

If you want to check with other color combinations, try the [Color Contrast Checker](#).

Decimal 1288740 Background



This preview shows how black text looks on a background with the Decimal color 1288740.



This preview shows how white text looks on a background with the Decimal color 1288740.

Color Blindness Simulation

Color vision deficiency is a very complex topic, and I could not describe the different causes any better than Wikipedia does, so if you want to learn more, you should check out their [article about color blindness](#).

Dichromacy





Tritanopia
13019061

Trichromacy



Original Color
12888740

Protanomaly
12234150

Deuteranomaly
12954276

Tritanomaly
12953775

Monochromacy



Original Color
12888740

Achromatopsia
11645361

Achromatomaly
12103340

CSS Examples

Text

The CSS property to change the color of the text to Decimal 12888740 is called "color". The color property can be set on classes, ids or directly on the HTML element.

This example shows how text in the color #C4AAA4 looks like.

```
.text, #text, p{  
    color:#C4AAA4  
}
```

If you want to add a text shadow in that color use the text-shadow property, you can generate a text shadow directly with our [CSS Text Shadow Generator](#).

Here you see how black text with a 4 pixel #C4AAA4 colored shadow looks like.

```
.shadow{ text-shadow: 4px 4px 2px #C4AAA4
}
```

Border

The CSS property to change the border of an element to Decimal 12888740 is called "border". The border property can be set on classes, ids or directly on the HTML element.

This example shows the color as border, it can be applied via the CSS property "border" or "border-color".

```
.border, #border, table{ border:4px solid
#C4AAA4 }
```

If only the border color should be changed use the property `border-color`.

```
.border{ border-color:#C4AAA4 }
```

If you want to add a box shadow in that color use:

Here you see how a box with a 4 pixel #C4AAA4 colored shadow looks like.

```
.boxshadow{ -moz-box-shadow:4px 4px 4px  
4px #C4AAA4; -webkit-box-shadow:4px 4px  
4px 4px #C4AAA4; box-shadow:4px 4px 4px  
4px #C4AAA4 }
```

Background

The CSS property to change the background color of an element to Decimal 12888740 is called "background". The background property can be set on classes, ids or directly on the HTML element.

```
.background, #background, body{  
background:#C4AAA4 }
```

If only the background color should be changed can be used:

```
.background{ background-color:#C4AAA4 }
```

This example shows the color as background, it is applied via the CSS property "background".

To optimize and compress your CSS code, you can use our [online CSS compressor and optimizer](#) based on csstidy. If you want to create a linear or radial gradient as background or border, check our [CSS Gradient Generator](#).

Hey! You found this booklet interesting? Support Converting Colors with the new Membership Option!

The pro membership hides all ads, plus gives you double the colors in the color bucket, and more awesome pro features!

[Learn more, Memberships starting at \\$2.50/m!](#)

**Follow me
on Twitter!**

@ConvertingColor