

Converting Colors

Decimal(12891320)

Have a look what the booklet for
Decimal(12891320) contains.

Decimal(12891320)	3
<i>Conversions</i>	4
<i>Details</i>	6
<i>Harmonies</i>	11
<i>Previews</i>	23
<i>Color Blindness Simulation</i>	26
<i>CSS Examples</i>	29

Color

Decimal(12891320)

Conversions

Conversions Part 1

Format	Color
Hex	C4B4B8
RGB	196, 180, 184
RGB Percent	77%, 71%, 72%
CMY	0.2314, 0.2941, 0.2784
CMYK	0.00, 0.08, 0.06, 0.23
HSL	345°, 12%, 74%
HSV	345°, 8%, 77%
XYZ	47.7379, 47.8390, 52.0652
YIQ	185.2400, 8.2520, 4.6360

Conversions

Conversions Part 2

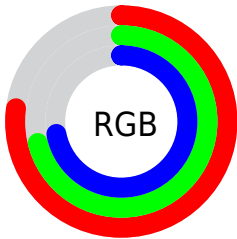
Format	Color
RYB	196, 180, 184
Decimal	12891320
CIELab	74.72, 6.40, 0.02
CIELCh	75, 6.398, 0.209
Yxy	47.8390, 0.3233, 0.3240
Android (android.graphics.Color)	4291081400 (0xFFC4B4B8)
YUV	185.2400, -0.6113, 9.4365
Hunter-Lab	69.1657, 2.1601, 3.7849

Details

The Decimal color **12891320** is a light color, and the websafe version is hex **CCCCCC**. A complement of this color would be **11846848**, and the grayscale version is **12171705**.

A 20% lighter version of the original color is **16641264**, and **9338755** is the 20% darker color. If you saturate the color by 10%, you get **12886185**, and if you desaturate by 10%, it is **12896455**.

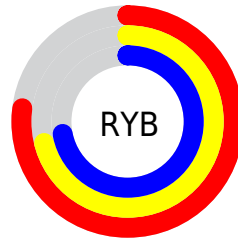
Distribution



Red (77%)

Green (71%)

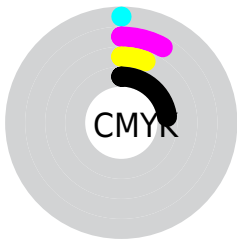
Blue (72%)



Red (77%)

Yellow (71%)

Blue (72%)

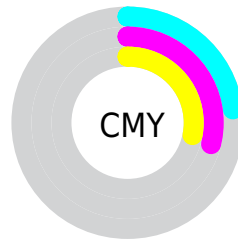


Cyan (0%)

Magenta (8%)

Yellow (6%)

Black (23%)



Cyan (23%)

Magenta (29%)

Yellow (28%)

Brightness & Saturation Gradients


These gradients show how the Decimal color 12891320 changes by changing the brightness by 10 percent. The first figure shows a shift by +10% for each color and the second figure -10%.

Similar to the brightness gradients but the following saturation gradients show a change of the Decimal color 12891320 by changing the saturation by 10% instead.

 12891320

 12891320

16777215

 11114909

 16641264

 9338755

 7693930

 6049362

 4470587

 3023397

 1707024

 0

 12891320

 12891320

 12886185

 12896455

 12881307

 12901333

 12876172

 12906468

 12871293

 12910579

 12866158

 12910591

 12861024

 12856145

 12851010

 12846132

Harmonies

Analogous

The Analogous color harmony consists of three colors that are next to each other on the color wheel.



12629438



12891320



12956850

Triad

The Triadic color harmony groups three colors that are evenly spaced from another and form a triangle on the color wheel.



12891320



11975086



11320002

Complementary

The Complementary color scheme is a pair of colors which are on the opposite of each other on the color wheel.



12891320



11846848

Split Complementary

Split-complementary colors differ from the complementary color scheme. The scheme consists of three colors, the original color and two neighbors of the complement color.



11189182



12891320



11582386

Square

The Square scheme is like the rectangle color scheme, but the four colors are evenly spaced on the color wheel.



12891320



12433324



11254712



11712707

Rectangle

The Rectangle color scheme consists of four colors that form a rectangle on the color wheel.



12891320



12891567



11254712



11254721

Sweetspot

The Sweet Spot groups the original color and five complimentary colors.



12891320



16775931



12629188



8420734



0



8421504

Same Dimension

The Same Dimension uses a secret algorithm to generate beautiful new colors.



12891320



16770796



12892340



6379354



10551336



2162696

Inverse Universe

The Inverse Universe completely reimagines the original color for something new.



12891320



16770796



11845828



6379354



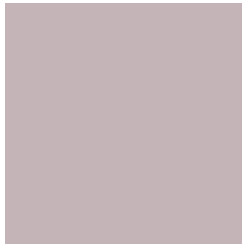
10551336



2162696

Previews

White Background



This preview shows how the Decimal color 12891320 looks on a white background.

Color Contrast Check

Large Text (above 18pt) WCAG AA × Fail

Any Text WCAG AA × Fail

Large Text (above 18pt) WCAG AAA × Fail

Any Text WCAG AAA × Fail

Black Background



This preview shows how the Decimal color 12891320 looks on a black background.

Color Contrast Check

Large Text (above 18pt) WCAG AA ✓ Pass

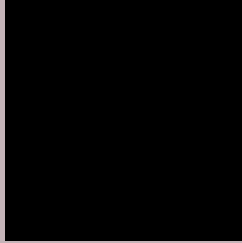
Any Text WCAG AA ✓ Pass

Large Text (above 18pt) WCAG AAA ✓ Pass

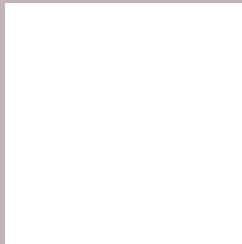
Any Text WCAG AAA ✓ Pass

If you want to check with other color combinations, try the [Color Contrast Checker](#).

Decimal 12891320 Background



This preview shows how black text looks on a background with the Decimal color 12891320.



This preview shows how white text looks on a background with the Decimal color 12891320.

Color Blindness Simulation

Color vision deficiency is a very complex topic, and I could not describe the different causes any better than Wikipedia does, so if you want to learn more, you should check out their [article about color blindness](#).


Dichromacy



Original Color
12891320

Protanopia
12302266

Deuteranopia
13218488



Tritanopia
12956609

Trichromacy



Original Color
12891320

Protanomaly
12498617

Deuteranomaly
13087672

Tritanomaly
12956606

Monochromacy



Original Color
12891320

Achromatopsia
12171705

Achromatomaly
12433337

CSS Examples

Text

The CSS property to change the color of the text to Decimal 12891320 is called "color". The color property can be set on classes, ids or directly on the HTML element.

This example shows how text in the color #C4B4B8 looks like.

```
.text, #text, p{  
  color:#C4B4B8  
}
```

If you want to add a text shadow in that color use the text-shadow property, you can generate a text shadow directly with our [CSS Text Shadow Generator](#).

Here you see how black text with a 4 pixel #C4B4B8 colored shadow looks like.

```
.shadow{ text-shadow: 4px 4px 2px #C4B4B8  
}
```

Border

The CSS property to change the border of an element to Decimal 12891320 is called "border". The border property can be set on classes, ids or directly on the HTML element.

This example shows the color as border, it can be applied via the CSS property "border" or "border-color".

```
.border, #border, table{ border:4px solid  
#C4B4B8 }
```

If only the border color should be changed use the property `border-color`.

```
.border{ border-color:#C4B4B8 }
```

If you want to add a box shadow in that color use:

Here you see how a box with a 4 pixel #C4B4B8 colored shadow looks like.

```
.boxshadow{ -moz-box-shadow:4px 4px 4px  
4px #C4B4B8; -webkit-box-shadow:4px 4px  
4px 4px #C4B4B8; box-shadow:4px 4px 4px  
4px #C4B4B8 }
```

Background

The CSS property to change the background color of an element to Decimal 12891320 is called "background". The background property can be set on classes, ids or directly on the HTML element.

```
.background, #background, body{  
background:#C4B4B8 }
```

If only the background color should be changed can be used:

```
.background{ background-color:#C4B4B8 }
```

This example shows the color as background, it is applied via the CSS property "background".

To optimize and compress your CSS code, you can use our [online CSS compressor and optimizer](#) based on csstidy. If you want to create a linear or radial gradient as background or border, check our [CSS Gradient Generator](#).

Hey! You found this booklet interesting? Support Converting Colors with the new Membership Option!

The pro membership hides all ads, plus gives you double the colors in the color bucket, and more awesome pro features!

[Learn more, Memberships starting at \\$2.50/m!](#)

**Follow me
on Twitter!**

@ConvertingColor