

Converting Colors

Decimal(12937365)

Have a look what the booklet for
Decimal(12937365) contains.

Decimal(12937365)	3
<i>Conversions</i>	4
<i>Details</i>	6
<i>Harmonies</i>	11
<i>Previews</i>	23
<i>Color Blindness Simulation</i>	26
<i>CSS Examples</i>	29

Color

Decimal(12937365)

Conversions

Conversions Part 1

Format	Color
Hex	C56895
RGB	197, 104, 149
RGB Percent	77%, 41%, 58%
CMY	0.2275, 0.5922, 0.4157
CMYK	0.00, 0.47, 0.24, 0.23
HSL	331°, 44%, 59%
HSV	331°, 47%, 77%
XYZ	33.4011, 23.9409, 31.2944
YIQ	136.9370, 40.9830, 33.7110

Conversions

Conversions Part 2

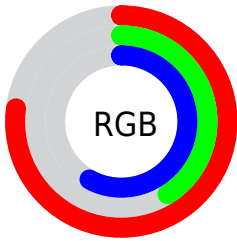
Format	Color
RYB	197, 104, 149
Decimal	12937365
CIELab	56.03, 42.37, -7.80
CIELCh	56, 43.084, 349.569
Yxy	23.9409, 0.3768, 0.2701
Android (android.graphics.Color)	4291127445 (0xFFC56895)
YUV	136.9370, 5.9471, 52.6753
Hunter-Lab	48.9294, 36.2245, -3.6703

Details

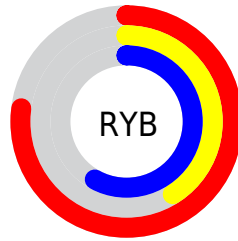
The Decimal color **12937365** is a light color, and the websafe version is hex **CC6699**. A complement of this color would be **6866328**, and the grayscale version is **9013641**.

A 20% lighter version of the original color is **16752075**, and **9253986** is the 20% darker color. If you saturate the color by 10%, you get **12932235**, and if you desaturate by 10%, it is **12942495**.

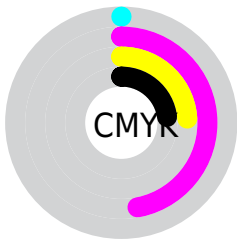
Distribution



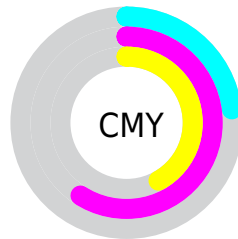
- Red (77%)
- Green (41%)
- Blue (58%)



- Red (77%)
- Yellow (41%)
- Blue (58%)



- Cyan (0%)
- Magenta (47%)
- Yellow (24%)
- Black (23%)



- Cyan (23%)
- Magenta (59%)
- Yellow (42%)

Brightness & Saturation Gradients

These gradients show how the Decimal color 12937365 changes by changing the brightness by 10 percent. The first figure shows a shift by +10% for each color and the second figure -10%.

Similar to the brightness gradients but the following saturation gradients show a change of the Decimal color 12937365 by changing the saturation by 10% instead.

 12937365

 12937365

16777215

 11095675

 16752075

 9253986

 16759271

 7477578

 16766463

 5701684

 16773887

 3997727

 2490371

 0

 12937365

 12937365

 12932235

 12942495

 12927361

 12947369

 12922230

 12952500

 12917100

 12957630

 12912226

 12962760

 12910687

 12967634

 12972764

 12976102

 12976113

Harmonies

Analogous

The Analogous color harmony consists of three colors that are next to each other on the color wheel.



11039671



12937365



13461615

Triad

The Triadic color harmony groups three colors that are evenly spaced from another and form a triangle on the color wheel.



12937365



8686653



38590

Complementary

The Complementary color scheme is a pair of colors which are on the opposite of each other on the color wheel.



12937365



6866328

Split Complementary

Split-complementary colors differ from the complementary color scheme. The scheme consists of three colors, the original color and two neighbors of the complement color.



39326



12937365



5870676

Square

The Square scheme is like the rectangle color scheme, but the four colors are evenly spaced on the color wheel.



12937365



11042875



39031



364240

Rectangle

The Rectangle color scheme consists of four colors that form a rectangle on the color wheel.



12937365



13069912



39031



39093

Sweetspot

The Sweet Spot groups the original color and five complimentary colors.



12937365



16767981



9922757



8415860



0



8421504

Same Dimension

The Same Dimension uses a secret algorithm to generate beautiful new colors.



12937365



16740020



12937320



6511198



10682447



2359313

Inverse Universe

The Inverse Universe completely reimagines the original color for something new.



12937365



16740020



6866373



6511198



10682447



2359313

Previews

White Background



This preview shows how the Decimal color 12937365 looks on a white background.

Color Contrast Check

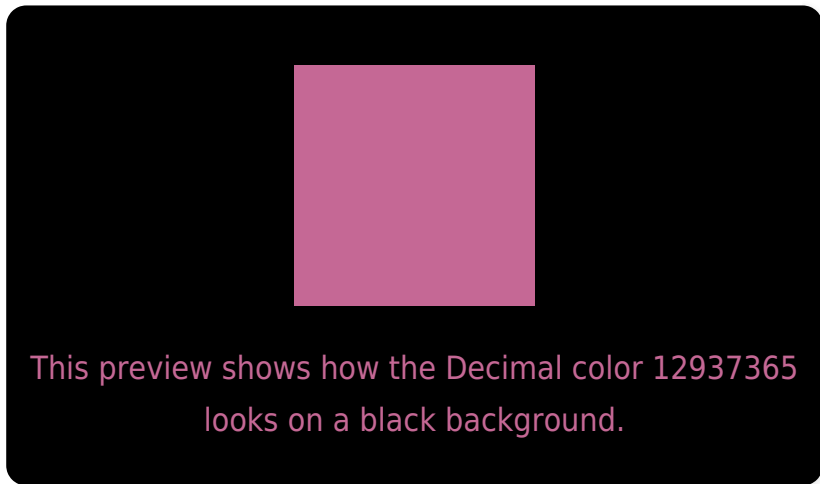
Large Text (above 18pt) WCAG AA ✓ Pass

Any Text WCAG AA × Fail

Large Text (above 18pt) WCAG AAA × Fail

Any Text WCAG AAA × Fail

Black Background



Color Contrast Check

Large Text (above 18pt) WCAG AA ✓ Pass

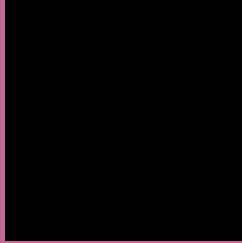
Any Text WCAG AA ✓ Pass

Large Text (above 18pt) WCAG AAA ✓ Pass

Any Text WCAG AAA × Fail

If you want to check with other color combinations, try the [Color Contrast Checker](#).

Decimal 12937365 Background



This preview shows how black text looks on a background with the Decimal color 12937365.



This preview shows how white text looks on a background with the Decimal color 12937365.

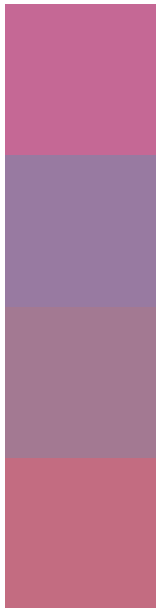
Color Blindness Simulation

Color vision deficiency is a very complex topic, and I could not describe the different causes any better than Wikipedia does, so if you want to learn more, you should check out their [article about color blindness](#).

Dichromacy



Trichromacy



Original Color
12937365

Protanomaly
9992865

Deuteranomaly
10713490

Tritanomaly
12807297

Monochromacy



Original Color
12937365

Achromatopsia
9013641

Achromatomaly
10452365

CSS Examples

Text

The CSS property to change the color of the text to Decimal 12937365 is called "color". The color property can be set on classes, ids or directly on the HTML element.

This example shows how text in the color #C56895 looks like.

```
.text, #text, p{  
    color:#C56895  
}
```

If you want to add a text shadow in that color use the text-shadow property, you can generate a text shadow directly with our [CSS Text Shadow Generator](#).

Here you see how black text with a 4 pixel #C56895 colored shadow looks like.

```
.shadow{ text-shadow: 4px 4px 2px #C56895
}
```

Border

The CSS property to change the border of an element to Decimal 12937365 is called "border". The border property can be set on classes, ids or directly on the HTML element.

This example shows the color as border, it can be applied via the CSS property "border" or "border-color".

```
.border, #border, table{ border:4px solid
#C56895 }
```

If only the border color should be changed use the property `border-color`.

```
.border{ border-color:#C56895 }
```

If you want to add a box shadow in that color use:

Here you see how a box with a 4 pixel #C56895 colored shadow looks like.

```
.boxshadow{ -moz-box-shadow:4px 4px 4px  
4px #C56895; -webkit-box-shadow:4px 4px  
4px 4px #C56895; box-shadow:4px 4px 4px  
4px #C56895 }
```

Background

The CSS property to change the background color of an element to Decimal 12937365 is called "background". The background property can be set on classes, ids or directly on the HTML element.

```
.background, #background, body{  
background:#C56895 }
```

If only the background color should be changed can be used:

```
.background{ background-color:#C56895 }
```

This example shows the color as background, it is applied via the CSS property "background".

To optimize and compress your CSS code, you can use our [online CSS compressor and optimizer](#) based on csstidy. If you want to create a linear or radial gradient as background or border, check our [CSS Gradient Generator](#).

Hey! You found this booklet interesting? Support Converting Colors with the new Membership Option!

The pro membership hides all ads, plus gives you double the colors in the color bucket, and more awesome pro features!

[Learn more, Memberships starting at \\$2.50/m!](#)

**Follow me
on Twitter!**

@ConvertingColor