

Converting Colors

Decimal(12941933)

Have a look what the booklet for
Decimal(12941933) contains.

Decimal(12941933)	3
<i>Conversions</i>	4
<i>Details</i>	6
<i>Harmonies</i>	11
<i>Previews</i>	23
<i>Color Blindness Simulation</i>	26
<i>CSS Examples</i>	29

Color

Decimal(12941933)

Conversions

Conversions Part 1

Format	Color
Hex	C57A6D
RGB	197, 122, 109
RGB Percent	77%, 48%, 43%
CMY	0.2275, 0.5216, 0.5725
CMYK	0.00, 0.38, 0.45, 0.23
HSL	9°, 43%, 60%
HSV	9°, 45%, 77%
XYZ	32.7458, 26.8935, 17.9331
YIQ	142.9430, 48.8730, 11.8570

Conversions

Conversions Part 2

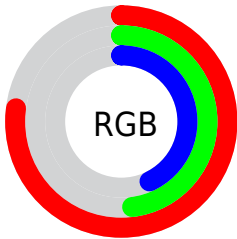
Format	Color
R_{YB}	197, 124, 109
Decimal	12941933
CIE _{Lab}	58.88, 27.78, 19.47
CIE _{LCh}	59, 33.919, 35.023
Yxy	26.8935, 0.4221, 0.3467
Android (android.graphics.Color)	4291132013 (0xFFC57A6D)
YUV	142.9430, -16.7339, 47.4080
Hunter-Lab	51.8590, 21.9588, 15.7985

Details

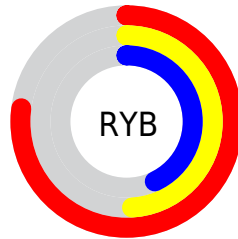
The Decimal color **12941933** is a dark color, and the websafe version is hex **CC6666**. A complement of this color would be **7190725**, and the grayscale version is **9408399**.

A 20% lighter version of the original color is **16756641**, and **9193533** is the 20% darker color. If you saturate the color by 10%, you get **12937561**, and if you desaturate by 10%, it is **12946305**.

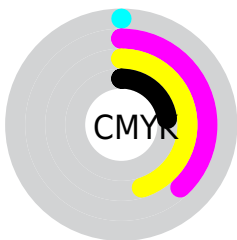
Distribution



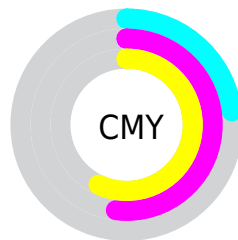
- Red (77%)
- Green (48%)
- Blue (43%)



- Red (77%)
- Yellow (49%)
- Blue (43%)



- Cyan (0%)
- Magenta (38%)
- Yellow (45%)
- Black (23%)



- Cyan (23%)
- Magenta (52%)
- Yellow (57%)

Brightness & Saturation Gradients

These gradients show how the Decimal color 12941933 changes by changing the brightness by 10 percent. The first figure shows a shift by +10% for each color and the second figure -10%.

Similar to the brightness gradients but the following saturation gradients show a change of the Decimal color 12941933 by changing the saturation by 10% instead.

 12941933

 12941933

16777215

 11034965

 16756641

 9193533

 16763836

 7417895

 16771031

 5642515

 16777204

 3932416

 2424833

 0

 12941933

 12941933

 12937561

 12946305

 12933190

 12950676

 12929074

 12954792

 12924702

 12959164

 12920331

 12963536

 12918016

 12967907

 12972279

 12976127

Harmonies

Analogous

The Analogous color harmony consists of three colors that are next to each other on the color wheel.



13006474



12941933



11961176

Triad

The Triadic color harmony groups three colors that are evenly spaced from another and form a triangle on the color wheel.



12941933



5806964



6983625

Complementary

The Complementary color scheme is a pair of colors which are on the opposite of each other on the color wheel.



12941933



7190725

Split Complementary

Split-complementary colors differ from the complementary color scheme. The scheme consists of three colors, the original color and two neighbors of the complement color.



3315651



12941933



2924178

Square

The Square scheme is like the rectangle color scheme, but the four colors are evenly spaced on the color wheel.



12941933



8230492



40111



9995454

Rectangle

The Rectangle color scheme consists of four colors that form a rectangle on the color wheel.



12941933



10914386



40111



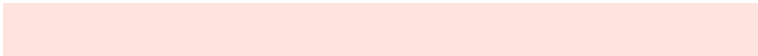
5870280

Sweetspot

The Sweet Spot groups the original color and five complimentary colors.



12941933



16770014



12938681



8416875



0



8421504

Same Dimension

The Same Dimension uses a secret algorithm to generate beautiful new colors.



12941933



16747125



12952941



6511450



10688512



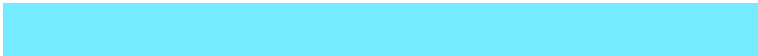
2360576

Inverse Universe

The Inverse Universe completely reimagines the original color for something new.



7190725



7728127



7179717



5923427



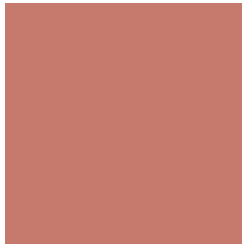
35747



7716

Previews

White Background



This preview shows how the Decimal color 12941933 looks on a white background.

Color Contrast Check

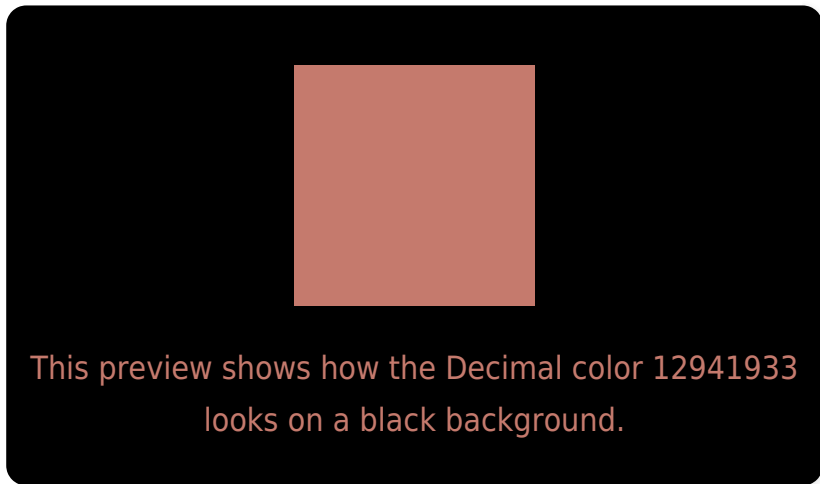
Large Text (above 18pt) WCAG AA ✓ Pass

Any Text WCAG AA × Fail

Large Text (above 18pt) WCAG AAA × Fail

Any Text WCAG AAA × Fail

Black Background



Color Contrast Check

Large Text (above 18pt) WCAG AA ✓ Pass

Any Text WCAG AA ✓ Pass

Large Text (above 18pt) WCAG AAA ✓ Pass

Any Text WCAG AAA × Fail

If you want to check with other color combinations, try the [Color Contrast Checker](#).

Decimal 12941933 Background



This preview shows how black text looks on a background with the Decimal color 12941933.



This preview shows how white text looks on a background with the Decimal color 12941933.

Color Blindness Simulation

Color vision deficiency is a very complex topic, and I could not describe the different causes any better than Wikipedia does, so if you want to learn more, you should check out their [article about color blindness](#).

Dichromacy





Tritanopia
13072256

Trichromacy



Original Color
12941933

Protanomaly
10979187

Deuteranomaly
11764587

Tritanomaly
13006969

Monochromacy



Original Color
12941933

Achromatopsia
9408399

Achromatomaly
10717059

CSS Examples

Text

The CSS property to change the color of the text to Decimal 12941933 is called "color". The color property can be set on classes, ids or directly on the HTML element.

This example shows how text in the color #C57A6D looks like.

```
.text, #text, p{  
    color:#C57A6D  
}
```

If you want to add a text shadow in that color use the text-shadow property, you can generate a text shadow directly with our [CSS Text Shadow Generator](#).

Here you see how black text with a 4 pixel #C57A6D colored shadow looks like.

```
.shadow{ text-shadow: 4px 4px 2px #C57A6D
}
```

Border

The CSS property to change the border of an element to Decimal 12941933 is called "border". The border property can be set on classes, ids or directly on the HTML element.

This example shows the color as border, it can be applied via the CSS property "border" or "border-color".

```
.border, #border, table{ border:4px solid
#C57A6D }
```

If only the border color should be changed use the property `border-color`.

```
.border{ border-color:#C57A6D }
```

If you want to add a box shadow in that color use:

Here you see how a box with a 4 pixel #C57A6D colored shadow looks like.

```
.boxshadow{ -moz-box-shadow:4px 4px 4px  
4px #C57A6D; -webkit-box-shadow:4px 4px  
4px 4px #C57A6D; box-shadow:4px 4px 4px  
4px #C57A6D }
```

Background

The CSS property to change the background color of an element to Decimal 12941933 is called "background". The background property can be set on classes, ids or directly on the HTML element.

```
.background, #background, body{  
background:#C57A6D }
```

If only the background color should be changed can be used:

```
.background{ background-color:#C57A6D }
```

This example shows the color as background, it is applied via the CSS property "background".

To optimize and compress your CSS code, you can use our [online CSS compressor and optimizer](#) based on csstidy. If you want to create a linear or radial gradient as background or border, check our [CSS Gradient Generator](#).

Hey! You found this booklet interesting? Support Converting Colors with the new Membership Option!

The pro membership hides all ads, plus gives you double the colors in the color bucket, and more awesome pro features!

[Learn more, Memberships starting at \\$2.50/m!](#)

**Follow me
on Twitter!**

@ConvertingColor