

Converting Colors

Decimal(12944752)

Have a look what the booklet for
Decimal(12944752) contains.

Decimal(12944752)	3
<i>Conversions</i>	4
<i>Details</i>	6
<i>Harmonies</i>	11
<i>Previews</i>	23
<i>Color Blindness Simulation</i>	26
<i>CSS Examples</i>	29

Color

Decimal(12944752)

Conversions

Conversions Part 1

Format	Color
Hex	C58570
RGB	197, 133, 112
RGB Percent	77%, 52%, 44%
CMY	0.2275, 0.4784, 0.5608
CMYK	0.00, 0.32, 0.43, 0.23
HSL	15°, 42%, 61%
HSV	15°, 43%, 77%
XYZ	34.3381, 29.8152, 19.2743
YIQ	149.7420, 44.8850, 7.0370

Conversions

Conversions Part 2

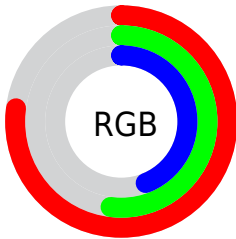
Format	Color
RYB	197, 140, 112
Decimal	12944752
CIELab	61.49, 22.08, 21.31
CIELCh	61, 30.689, 43.987
Yxy	29.8152, 0.4116, 0.3574
Android (android.graphics.Color)	4291134832 (0xFFC58570)
YUV	149.7420, -18.6068, 41.4453
Hunter-Lab	54.6033, 16.6966, 17.2936

Details

The Decimal color **12944752** is a light color, and the websafe version is hex **CC9999**. A complement of this color would be **7385285**, and the grayscale version is **9868950**.

A 20% lighter version of the original color is **16759716**, and **9261888** is the 20% darker color. If you saturate the color by 10%, you get **12940892**, and if you desaturate by 10%, it is **12948612**.

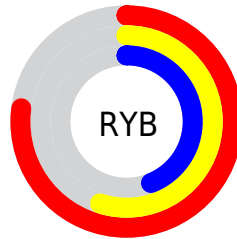
Distribution



Red (77%)

Green (52%)

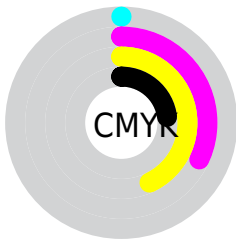
Blue (44%)



Red (77%)

Yellow (55%)

Blue (44%)

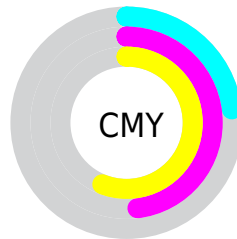


Cyan (0%)

Magenta (32%)

Yellow (43%)

Black (23%)



Cyan (23%)

Magenta (48%)

Yellow (56%)

Brightness & Saturation Gradients

These gradients show how the Decimal color 12944752 changes by changing the brightness by 10 percent. The first figure shows a shift by +10% for each color and the second figure -10%.

Similar to the brightness gradients but the following saturation gradients show a change of the Decimal color 12944752 by changing the saturation by 10% instead.

 12944752  12944752

16777215  11103063

 16759716  9261888

 16766655  7486250

 16774107  5711125

 16777207  4066816

 2555904

 0

 12944752  12944752

 12940892  12948612

 12937033

 12952471

 12933429

 12956075

 12929569

 12959935

 12925709

 12963795

 12923136

 12967654

 12971514

 12975359

 12976127

Harmonies

Analogous

The Analogous color harmony consists of three colors that are next to each other on the color wheel.



13271177



12944752



11832929

Triad

The Triadic color harmony groups three colors that are evenly spaced from another and form a triangle on the color wheel.



12944752



6005381



8623049

Complementary

The Complementary color scheme is a pair of colors which are on the opposite of each other on the color wheel.



12944752



7385285

Split Complementary

Split-complementary colors differ from the complementary color scheme. The scheme consists of three colors, the original color and two neighbors of the complement color.



5807048



12944752



3974049

Square

The Square scheme is like the rectangle color scheme, but the four colors are evenly spaced on the color wheel.



12944752



8167021



3580345



11045308

Rectangle

The Rectangle color scheme consists of four colors that form a rectangle on the color wheel.



12944752



10720350



3580345



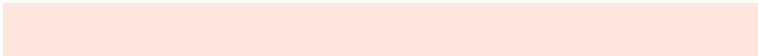
7706314

Sweetspot

The Sweet Spot groups the original color and five complimentary colors.



12944752



16770782



12939441



8417387



0



8421504

Same Dimension

The Same Dimension uses a secret algorithm to generate beautiful new colors.



12944752



16751482



12955248



6511706



10692608



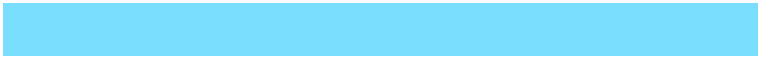
2361600

Inverse Universe

The Inverse Universe completely reimagines the original color for something new.



7385285



8052479



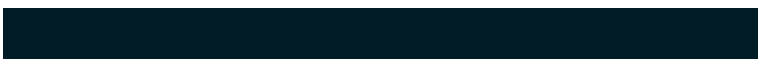
7374789



5923171



31651



6948

Previews

White Background



This preview shows how the Decimal color 12944752 looks on a white background.

Color Contrast Check

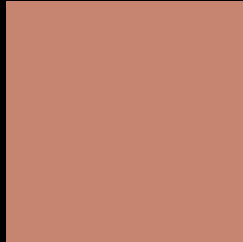
Large Text (above 18pt) WCAG AA ✓ Pass

Any Text WCAG AA × Fail

Large Text (above 18pt) WCAG AAA × Fail

Any Text WCAG AAA × Fail

Black Background



This preview shows how the Decimal color 12944752 looks on a black background.

Color Contrast Check

Large Text (above 18pt) WCAG AA ✓ Pass

Any Text WCAG AA ✓ Pass

Large Text (above 18pt) WCAG AAA ✓ Pass

Any Text WCAG AAA × Fail

If you want to check with other color combinations, try the [Color Contrast Checker](#).

Decimal 12944752 Background



This preview shows how black text looks on a background with the Decimal color 12944752.



This preview shows how white text looks on a background with the Decimal color 12944752.

Color Blindness Simulation

Color vision deficiency is a very complex topic, and I could not describe the different causes any better than Wikipedia does, so if you want to learn more, you should check out their [article about color blindness](#).

Dichromacy





Tritanopia
13074827

Trichromacy



Original Color

12944752

Protanomaly

11308916

Deuteranomaly

12094319

Tritanomaly

13009537

Monochromacy



Original Color

12944752

Achromatopsia

9868950

Achromatomaly

10981512

CSS Examples

Text

The CSS property to change the color of the text to Decimal 12944752 is called "color". The color property can be set on classes, ids or directly on the HTML element.

This example shows how text in the color #C58570 looks like.

```
.text, #text, p{  
  color:#C58570  
}
```

If you want to add a text shadow in that color use the text-shadow property, you can generate a text shadow directly with our [CSS Text Shadow Generator](#).

Here you see how black text with a 4 pixel #C58570 colored shadow looks like.

```
.shadow{ text-shadow: 4px 4px 2px #C58570
}
```

Border

The CSS property to change the border of an element to Decimal 12944752 is called "border". The border property can be set on classes, ids or directly on the HTML element.

This example shows the color as border, it can be applied via the CSS property "border" or "border-color".

```
.border, #border, table{ border:4px solid
#C58570 }
```

If only the border color should be changed use the property `border-color`.

```
.border{ border-color:#C58570 }
```

If you want to add a box shadow in that color use:

Here you see how a box with a 4 pixel #C58570 colored shadow looks like.

```
.boxshadow{ -moz-box-shadow:4px 4px 4px  
4px #C58570; -webkit-box-shadow:4px 4px  
4px 4px #C58570; box-shadow:4px 4px 4px  
4px #C58570 }
```

Background

The CSS property to change the background color of an element to Decimal 12944752 is called "background". The background property can be set on classes, ids or directly on the HTML element.

```
.background, #background, body{  
background:#C58570 }
```

If only the background color should be changed can be used:

```
.background{ background-color:#C58570 }
```

This example shows the color as background, it is applied via the CSS property "background".

To optimize and compress your CSS code, you can use our [online CSS compressor and optimizer](#) based on csstidy. If you want to create a linear or radial gradient as background or border, check our [CSS Gradient Generator](#).

Hey! You found this booklet interesting? Support Converting Colors with the new Membership Option!

The pro membership hides all ads, plus gives you double the colors in the color bucket, and more awesome pro features!

[Learn more, Memberships starting at \\$2.50/m!](#)

**Follow me
on Twitter!**

@ConvertingColor