

Converting Colors

Decimal(12944771)

Have a look what the booklet for
Decimal(12944771) contains.

Decimal(12944771)	3
<i>Conversions</i>	4
<i>Details</i>	6
<i>Harmonies</i>	11
<i>Previews</i>	23
<i>Color Blindness Simulation</i>	26
<i>CSS Examples</i>	29

Color

Decimal(12944771)

Conversions

Conversions Part 1

Format	Color
Hex	C58583
RGB	197, 133, 131
RGB Percent	77%, 52%, 51%
CMY	0.2275, 0.4784, 0.4863
CMYK	0.00, 0.32, 0.34, 0.23
HSL	2°, 36%, 64%
HSV	2°, 34%, 77%
XYZ	35.5102, 30.2841, 25.4465
YIQ	151.9080, 38.7860, 12.9460

Conversions

Conversions Part 2

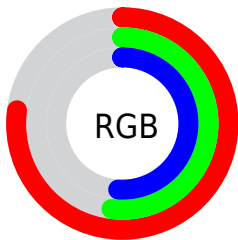
Format	Color
RYB	197, 133, 131
Decimal	12944771
CIELab	61.90, 24.35, 11.11
CIElCh	62, 26.763, 24.539
Yxy	30.2841, 0.3892, 0.3319
Android (android.graphics.Color)	4291134851 (0xFFC58583)
YUV	151.9080, -10.3076, 39.5457
Hunter-Lab	55.0310, 18.8778, 11.1057

Details

The Decimal color **12944771** is a light color, and the websafe version is hex **CC9999**. A complement of this color would be **8635333**, and the grayscale version is **10000536**.

A 20% lighter version of the original color is **16759736**, and **9261906** is the 20% darker color. If you saturate the color by 10%, you get **12939887**, and if you desaturate by 10%, it is **12949655**.

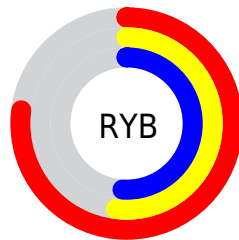
Distribution



Red (77%)

Green (52%)

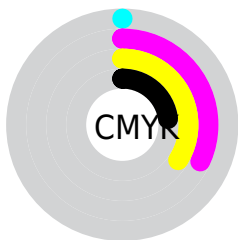
Blue (51%)



Red (77%)

Yellow (52%)

Blue (51%)

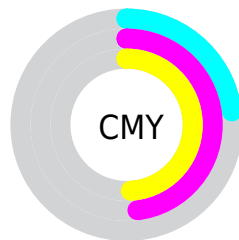


Cyan (0%)

Magenta (32%)

Yellow (34%)

Black (23%)



Cyan (23%)

Magenta (48%)

Yellow (49%)

Brightness & Saturation Gradients

These gradients show how the Decimal color 12944771 changes by changing the brightness by 10 percent. The first figure shows a shift by +10% for each color and the second figure -10%.

Similar to the brightness gradients but the following saturation gradients show a change of the Decimal color 12944771 by changing the saturation by 10% instead.

 12944771

 12944771

16777215

 11103082

 16759736

 9261906

 16766932

 7551803

 16774128

 5776421

 4132112

 2686976

 0

 12944771

 12944771

 12939887

 12949655

 12935004

 12954538

 12930120

 12959422

 12925236

 12964306

 12920096

 12969446

 12915213

 12974329

 12912128

 12976127

Harmonies

Analogous

The Analogous color harmony consists of three colors that are next to each other on the color wheel.



12682395



12944771



12422000

Triad

The Triadic color harmony groups three colors that are evenly spaced from another and form a triangle on the color wheel.



12944771



7839865



7379396

Complementary

The Complementary color scheme is a pair of colors which are on the opposite of each other on the color wheel.



12944771



8635333

Split Complementary

Split-complementary colors differ from the complementary color scheme. The scheme consists of three colors, the original color and two neighbors of the complement color.



5480379



12944771



6070928

Square

The Square scheme is like the rectangle color scheme, but the four colors are evenly spaced on the color wheel.



12944771



9607786



4956840



9671105

Rectangle

The Rectangle color scheme consists of four colors that form a rectangle on the color wheel.



12944771



11636840



4956840



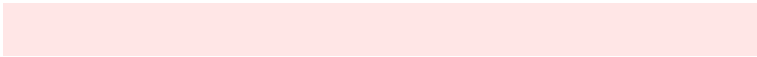
6659011

Sweetspot

The Sweet Spot groups the original color and five complimentary colors.



12944771



16770790



12944324



8417648



0



8421504

Same Dimension

The Same Dimension uses a secret algorithm to generate beautiful new colors.



12944771



16751769



12952963



6511194



10683648



2359552

Inverse Universe

The Inverse Universe completely reimagines the original color for something new.



8635333



10091775



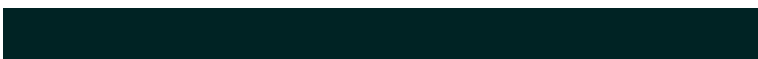
8627141



5923683



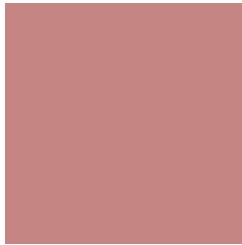
40611



8996

Previews

White Background



This preview shows how the Decimal color 12944771 looks on a white background.

Color Contrast Check

Large Text (above 18pt) WCAG AA × Fail

Any Text WCAG AA × Fail

Large Text (above 18pt) WCAG AAA × Fail

Any Text WCAG AAA × Fail

Black Background



This preview shows how the Decimal color 12944771 looks on a black background.

Color Contrast Check

Large Text (above 18pt) WCAG AA ✓ Pass

Any Text WCAG AA ✓ Pass

Large Text (above 18pt) WCAG AAA ✓ Pass

Any Text WCAG AAA ✓ Pass

If you want to check with other color combinations, try the [Color Contrast Checker](#).

Decimal 12944771 Background



This preview shows how black text looks on a background with the Decimal color 12944771.



This preview shows how white text looks on a background with the Decimal color 12944771.

Color Blindness Simulation

Color vision deficiency is a very complex topic, and I could not describe the different causes any better than Wikipedia does, so if you want to learn more, you should check out their [article about color blindness](#).

Dichromacy



Original Color
12944771

Protanopia
10196364

Deuteranopia
11309185



Tritanopia
13009805

Trichromacy



Original Color
12944771

Protanomaly
11177865

Deuteranomaly
11897986

Tritanomaly
13010057

Monochromacy



Original Color
12944771

Achromatopsia
10000536

Achromatomaly
11047312

CSS Examples

Text

The CSS property to change the color of the text to Decimal 12944771 is called "color". The color property can be set on classes, ids or directly on the HTML element.

This example shows how text in the color #C58583 looks like.

```
.text, #text, p{  
    color:#C58583  
}
```

If you want to add a text shadow in that color use the text-shadow property, you can generate a text shadow directly with our [CSS Text Shadow Generator](#).

Here you see how black text with a 4 pixel #C58583 colored shadow looks like.

```
.shadow{ text-shadow: 4px 4px 2px #C58583
}
```

Border

The CSS property to change the border of an element to Decimal 12944771 is called "border". The border property can be set on classes, ids or directly on the HTML element.

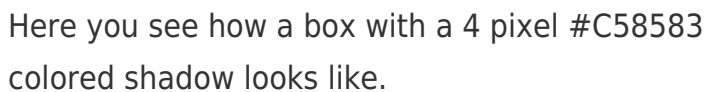
This example shows the color as border, it can be applied via the CSS property "border" or "border-color".

```
.border, #border, table{ border:4px solid
#C58583 }
```

If only the border color should be changed use the property `border-color`.

```
.border{ border-color:#C58583 }
```

If you want to add a box shadow in that color use:



Here you see how a box with a 4 pixel #C58583 colored shadow looks like.

```
.boxshadow{ -moz-box-shadow:4px 4px 4px  
4px #C58583; -webkit-box-shadow:4px 4px  
4px 4px #C58583; box-shadow:4px 4px 4px  
4px #C58583 }
```

Background

The CSS property to change the background color of an element to Decimal 12944771 is called "background". The background property can be set on classes, ids or directly on the HTML element.

```
.background, #background, body{  
background:#C58583 }
```

If only the background color should be changed can be used:

```
.background{ background-color:#C58583 }
```

This example shows the color as background, it is applied via the CSS property "background".

To optimize and compress your CSS code, you can use our [online CSS compressor and optimizer](#) based on csstidy. If you want to create a linear or radial gradient as background or border, check our [CSS Gradient Generator](#).

Hey! You found this booklet interesting? Support Converting Colors with the new Membership Option!

The pro membership hides all ads, plus gives you double the colors in the color bucket, and more awesome pro features!

[Learn more, Memberships starting at \\$2.50/m!](#)

**Follow me
on Twitter!**

@ConvertingColor