

# Converting Colors

Decimal(12946799)

Have a look what the booklet for  
Decimal(12946799) contains.

<b>Decimal(12946799)</b> .....	3
<i><b>Conversions</b></i> .....	4
<i><b>Details</b></i> .....	6
<i><b>Harmonies</b></i> .....	11
<i><b>Previews</b></i> .....	23
<i><b>Color Blindness Simulation</b></i> .....	26
<i><b>CSS Examples</b></i> .....	29

# **Color**

**Decimal(12946799)**

# Conversions

## Conversions Part 1

Format	Color
Hex	C58D6F
RGB	197, 141, 111
RGB Percent	77%, 55%, 44%
CMY	0.2275, 0.4471, 0.5647
CMYK	0.00, 0.28, 0.44, 0.23
HSL	21°, 43%, 60%
HSV	21°, 44%, 77%
XYZ	35.4201, 32.0678, 19.3618
YIQ	154.3240, 43.0060, 2.5420

# Conversions

## Conversions Part 2

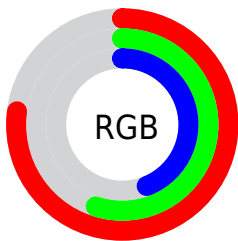
Format	Color
<a href="#">RYB</a>	<a href="#">197, 157, 111</a>
Decimal	<a href="#">12946799</a>
CIELab	<a href="#">63.40, 17.57, 24.43</a>
CIElCh	<a href="#">63, 30.092, 54.268</a>
Yxy	<a href="#">32.0678, 0.4078, 0.3692</a>
Android (android.graphics.Color)	<a href="#">4291136879 (0xFFC58D6F)</a>
YUV	<a href="#">154.3240, -21.3587, 37.4269</a>
Hunter-Lab	<a href="#">56.6284, 12.5489, 19.3681</a>

# Details

The Decimal color **12946799** is a dark color, and the websafe version is hex **CC9966**. A complement of this color would be **7317445**, and the grayscale version is **10197915**.

A 20% lighter version of the original color is **16761763**, and **9263935** is the 20% darker color. If you saturate the color by 10%, you get **12943451**, and if you desaturate by 10%, it is **12950147**.

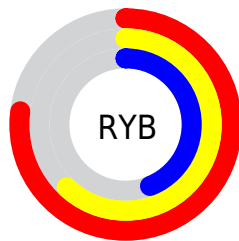
# Distribution



Red (77%)

Green (55%)

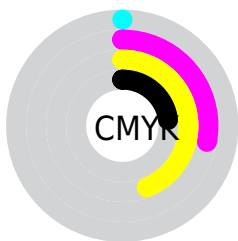
Blue (44%)



Red (77%)

Yellow (62%)

Blue (44%)

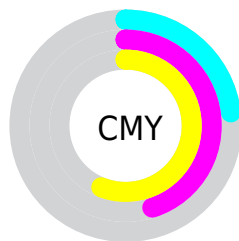


Cyan (0%)

Magenta (28%)

Yellow (44%)

Black (23%)



Cyan (23%)

Magenta (45%)

Yellow (56%)

# Brightness & Saturation Gradients

These gradients show how the Decimal color 12946799 changes by changing the brightness by 10 percent. The first figure shows a shift by +10% for each color and the second figure -10%.

Similar to the brightness gradients but the following saturation gradients show a change of the Decimal color 12946799 by changing the saturation by 10% instead.



 12946799

 12946799

16777215

 11105110

 16761763

 9263935

 16768958

 7488296

 16776154

 5712915

 16777206

 4134656

 2490368

 0

 12946799

 12946799

 12943451

 12950147

 12940104

 12953494

 12937012

 12956586

 12933664

 12959934

 12930316

 12963282

 12928256

 12966629

 12969977

 12973311

 12976127

# Harmonies

## Analogous

The Analogous color harmony consists of three colors that are next to each other on the color wheel.



13600389



12946799



11638372

# Triad

The Triadic color harmony groups three colors that are evenly spaced from another and form a triangle on the color wheel.



12946799



5744787



9868490

# Complementary

The Complementary color scheme is a pair of colors which are on the opposite of each other on the color wheel.



12946799



7317445

# Split Complementary

Split-complementary colors differ from the complementary color scheme. The scheme consists of three colors, the original color and two neighbors of the complement color.



7184078



12946799



4171951

# Square

The Square scheme is like the rectangle color scheme, but the four colors are evenly spaced on the color wheel.



12946799



7775609



4760772



12028857

# Rectangle

The Rectangle color scheme consists of four colors that form a rectangle on the color wheel.



12946799



10460261



4760772



9017549

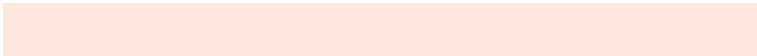


# Sweetspot

The Sweet Spot groups the original color and five complimentary colors.



12946799



16771550



12939176



8417899



0



8421504



# Same Dimension

The Same Dimension uses a secret algorithm to generate beautiful new colors.



12946799



16755066



12957551



6511962



10696960



2362368

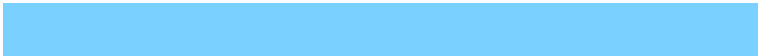


# Inverse Universe

The Inverse Universe completely reimagines the original color for something new.



7317445



8049151



7306693



5922915



27299



5924



# Previews

## White Background



This preview shows how the Decimal color 12946799 looks on a white background.

## Color Contrast Check

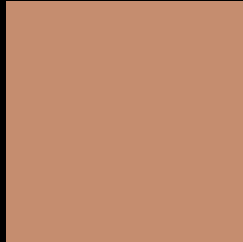
Large Text (above 18pt) WCAG AA × Fail

Any Text WCAG AA × Fail

Large Text (above 18pt) WCAG AAA × Fail

Any Text WCAG AAA × Fail

# Black Background



This preview shows how the Decimal color 12946799 looks on a black background.

## Color Contrast Check

Large Text (above 18pt) WCAG AA ✓ Pass

Any Text WCAG AA ✓ Pass

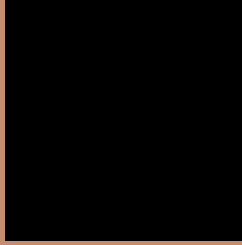
Large Text (above 18pt) WCAG AAA ✓ Pass

Any Text WCAG AAA ✓ Pass

If you want to check with other color combinations, try the [Color Contrast Checker](#).



## Decimal 12946799 Background



This preview shows how black text looks on a background with the Decimal color 12946799.




This preview shows how white text looks on a background with the Decimal color 12946799.

# Color Blindness Simulation

Color vision deficiency is a very complex topic, and I could not describe the different causes any better than Wikipedia does, so if you want to learn more, you should check out their [article about color blindness](#).

## Dichromacy





**Tritanopia**  
13142163

# Trichromacy



**Original Color**  
12946799

**Protanomaly**  
11638131

**Deuteranomaly**  
12357998

**Tritanomaly**  
13077126

# Monochromacy



**Original Color**  
12946799

**Achromatopsia**  
10132122

**Achromatomaly**  
11179402

# CSS Examples

## Text

The CSS property to change the color of the text to Decimal 12946799 is called "color". The color property can be set on classes, ids or directly on the HTML element.

This example shows how text in the color #C58D6F looks like.

```
.text, #text, p{  
    color:#C58D6F  
}
```

If you want to add a text shadow in that color use the text-shadow property, you can generate a text shadow directly with our [CSS Text Shadow Generator](#).

Here you see how black text with a 4 pixel #C58D6F colored shadow looks like.

```
.shadow{ text-shadow: 4px 4px 2px #C58D6F
}
```

## Border

The CSS property to change the border of an element to Decimal 12946799 is called "border". The border property can be set on classes, ids or directly on the HTML element.

This example shows the color as border, it can be applied via the CSS property "border" or "border-color".

```
.border, #border, table{ border:4px solid
#C58D6F }
```

If only the border color should be changed use the property `border-color`.

```
.border{ border-color:#C58D6F }
```

If you want to add a box shadow in that color use:

Here you see how a box with a 4 pixel #C58D6F colored shadow looks like.

```
.boxshadow{ -moz-box-shadow:4px 4px 4px  
4px #C58D6F; -webkit-box-shadow:4px 4px  
4px 4px #C58D6F; box-shadow:4px 4px 4px  
4px #C58D6F }
```

# Background

The CSS property to change the background color of an element to Decimal 12946799 is called "background". The background property can be set on classes, ids or directly on the HTML element.

```
.background, #background, body{  
background:#C58D6F }
```

If only the background color should be changed can be used:

```
.background{ background-color:#C58D6F }
```

This example shows the color as background, it is applied via the CSS property "background".

To optimize and compress your CSS code, you can use our [online CSS compressor and optimizer](#) based on csstidy. If you want to create a linear or radial gradient as background or border, check our [CSS Gradient Generator](#).



Hey! You found this booklet interesting? Support Converting Colors with the new Membership Option!

The pro membership hides all ads, plus gives you double the colors in the color bucket, and more awesome pro features!

**[Learn more, Memberships starting at \\$2.50/m!](#)**

**Follow me  
on Twitter!**

@ConvertingColor