

# Converting Colors

Decimal(12946818)

Have a look what the booklet for  
Decimal(12946818) contains.

<b>Decimal(12946818)</b> .....	3
<i><b>Conversions</b></i> .....	4
<i><b>Details</b></i> .....	6
<i><b>Harmonies</b></i> .....	11
<i><b>Previews</b></i> .....	23
<i><b>Color Blindness Simulation</b></i> .....	26
<i><b>CSS Examples</b></i> .....	29

# **Color**

**Decimal(12946818)**

# Conversions

## Conversions Part 1

<b>Format</b>	<b>Color</b>
Hex	C58D82
RGB	197, 141, 130
RGB Percent	77%, 55%, 51%
CMY	0.2275, 0.4471, 0.4902
CMYK	0.00, 0.28, 0.34, 0.23
HSL	10°, 37%, 64%
HSV	10°, 34%, 77%
XYZ	36.5801, 32.5318, 25.4704
YIQ	156.4900, 36.9070, 8.4510

# Conversions

## Conversions Part 2

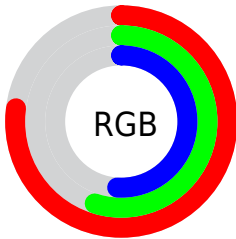
Format	Color
<a href="#">RYB</a>	<a href="#">197, 143, 130</a>
Decimal	<a href="#">12946818</a>
CIELab	<a href="#">63.78, 19.82, 14.32</a>
CIElCh	<a href="#">64, 24.450, 35.853</a>
Yxy	<a href="#">32.5318, 0.3868, 0.3440</a>
Android (android.graphics.Color)	<a href="#">4291136898 (0xFFC58D82)</a>
YUV	<a href="#">156.4900, -13.0596, 35.5273</a>
Hunter-Lab	<a href="#">57.0366, 14.6658, 13.4490</a>

# Details

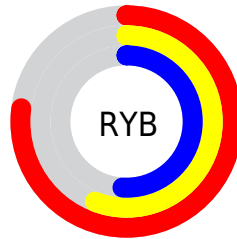
The Decimal color **12946818** is a light color, and the websafe version is hex **CC9999**. A complement of this color would be **8567493**, and the grayscale version is **10329501**.

A 20% lighter version of the original color is **16761783**, and **9329233** is the 20% darker color. If you saturate the color by 10%, you get **12942702**, and if you desaturate by 10%, it is **12950934**.

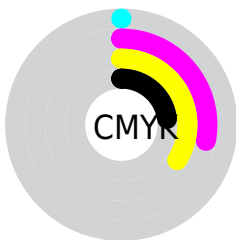
# Distribution



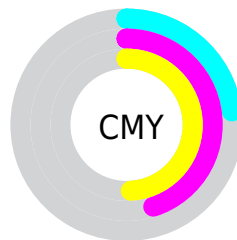
- Red (77%)
- Green (55%)
- Blue (51%)



- Red (77%)
- Yellow (56%)
- Blue (51%)



- Cyan (0%)
- Magenta (28%)
- Yellow (34%)
- Black (23%)



- Cyan (23%)
- Magenta (45%)
- Yellow (49%)

# Brightness & Saturation Gradients

These gradients show how the Decimal color 12946818 changes by changing the brightness by 10 percent. The first figure shows a shift by +10% for each color and the second figure -10%.

Similar to the brightness gradients but the following saturation gradients show a change of the Decimal color 12946818 by changing the saturation by 10% instead.



 12946818

 12946818

16777215

 11105129

 16761783

 9329233

 16768979

 7553850

 16776431

 5844004

 4199951

 2686976

 0

 12946818

 12946818

 12942702

 12950934

 12938331

 12955305

 12934215

 12959421

 12929843

 12963793

 12925728

 12967909

 12921356

 12972280

 12918784

 12976127

# Harmonies

## Analogous

The Analogous color harmony consists of three colors that are next to each other on the color wheel.



13011863



12946818



12161907

# Triad

The Triadic color harmony groups three colors that are evenly spaced from another and form a triangle on the color wheel.



12946818



7710088



8756165

# Complementary

The Complementary color scheme is a pair of colors which are on the opposite of each other on the color wheel.



12946818



8567493

# Split Complementary

Split-complementary colors differ from the complementary color scheme. The scheme consists of three colors, the original color and two neighbors of the complement color.



6857410



12946818



6334366

# Square

The Square scheme is like the rectangle color scheme, but the four colors are evenly spaced on the color wheel.



12946818



9347447



5875379



10720190

# Rectangle

The Rectangle color scheme consists of four colors that form a rectangle on the color wheel.



12946818



11376751



5875379



8101317



# Sweetspot

The Sweet Spot groups the original color and five complimentary colors.



12946818



16771814



12944059



8418160



0



8421504



# Same Dimension

The Same Dimension uses a secret algorithm to generate beautiful new colors.



12946818



16754838



12955266



6511450



10689280



2360832

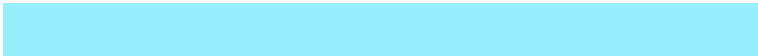


# Inverse Universe

The Inverse Universe completely reimagines the original color for something new.



8567493



9891583



8559045



5923427



34979



7716



# Previews

## White Background



This preview shows how the Decimal color 12946818 looks on a white background.

## Color Contrast Check

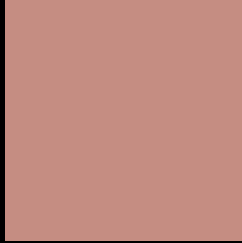
Large Text (above 18pt) WCAG AA × Fail

Any Text WCAG AA × Fail

Large Text (above 18pt) WCAG AAA × Fail

Any Text WCAG AAA × Fail

# Black Background



This preview shows how the Decimal color 12946818 looks on a black background.

## Color Contrast Check

Large Text (above 18pt) WCAG AA ✓ Pass

Any Text WCAG AA ✓ Pass

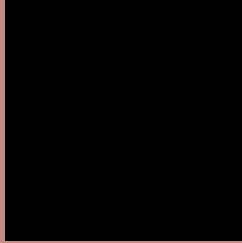
Large Text (above 18pt) WCAG AAA ✓ Pass

Any Text WCAG AAA ✓ Pass

If you want to check with other color combinations, try the [Color Contrast Checker](#).



## Decimal 12946818 Background



This preview shows how black text looks on a background with the Decimal color 12946818.



This preview shows how white text looks on a background with the Decimal color 12946818.

# Color Blindness Simulation

Color vision deficiency is a very complex topic, and I could not describe the different causes any better than Wikipedia does, so if you want to learn more, you should check out their [article about color blindness](#).

## Dichromacy



**Original Color**  
12946818

**Protanopia**  
10656393

**Deuteranopia**  
11769217



**Tritanopia**  
13077141

# Trichromacy



**Original Color**  
12946818

**Protanomaly**  
11507078

**Deuteranomaly**  
12227201

**Tritanomaly**  
13011854

# Monochromacy



**Original Color**  
12946818

**Achromatopsia**  
10263708

**Achromatomaly**  
11245459

# CSS Examples

## Text

The CSS property to change the color of the text to Decimal 12946818 is called "color". The color property can be set on classes, ids or directly on the HTML element.

This example shows how text in the color #C58D82 looks like.

```
.text, #text, p{  
    color:#C58D82  
}
```

If you want to add a text shadow in that color use the text-shadow property, you can generate a text shadow directly with our [CSS Text Shadow Generator](#).

Here you see how black text with a 4 pixel #C58D82 colored shadow looks like.

```
.shadow{ text-shadow: 4px 4px 2px #C58D82
}
```

## Border

The CSS property to change the border of an element to Decimal 12946818 is called "border". The border property can be set on classes, ids or directly on the HTML element.

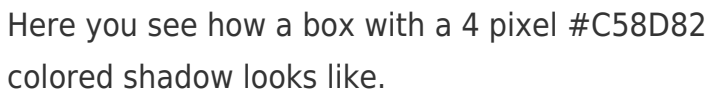
This example shows the color as border, it can be applied via the CSS property "border" or "border-color".

```
.border, #border, table{ border:4px solid
#C58D82 }
```

If only the border color should be changed use the property `border-color`.

```
.border{ border-color:#C58D82 }
```

If you want to add a box shadow in that color use:



Here you see how a box with a 4 pixel #C58D82 colored shadow looks like.

```
.boxshadow{ -moz-box-shadow:4px 4px 4px  
4px #C58D82; -webkit-box-shadow:4px 4px  
4px 4px #C58D82; box-shadow:4px 4px 4px  
4px #C58D82 }
```

# Background

The CSS property to change the background color of an element to Decimal 12946818 is called "background". The background property can be set on classes, ids or directly on the HTML element.

```
.background, #background, body{  
background:#C58D82 }
```

If only the background color should be changed can be used:

```
.background{ background-color:#C58D82 }
```

This example shows the color as background, it is applied via the CSS property "background".

To optimize and compress your CSS code, you can use our [online CSS compressor and optimizer](#) based on csstidy. If you want to create a linear or radial gradient as background or border, check our [CSS Gradient Generator](#).



Hey! You found this booklet interesting? Support Converting Colors with the new Membership Option!

The pro membership hides all ads, plus gives you double the colors in the color bucket, and more awesome pro features!

**[Learn more, Memberships starting at \\$2.50/m!](#)**

**Follow me  
on Twitter!**

@ConvertingColor