

Converting Colors

Decimal(12948604)

Have a look what the booklet for
Decimal(12948604) contains.

Decimal(12948604)	3
<i>Conversions</i>	4
<i>Details</i>	6
<i>Harmonies</i>	11
<i>Previews</i>	23
<i>Color Blindness Simulation</i>	26
<i>CSS Examples</i>	29

Color

Decimal(12948604)

Conversions

Conversions Part 1

Format	Color
Hex	C5947C
RGB	197, 148, 124
RGB Percent	77%, 58%, 49%
CMY	0.2275, 0.4196, 0.5137
CMYK	0.00, 0.25, 0.37, 0.23
HSL	20°, 39%, 63%
HSV	20°, 37%, 77%
XYZ	37.2540, 34.5054, 23.7655
YIQ	159.9150, 36.9080, 2.9240

Conversions

Conversions Part 2

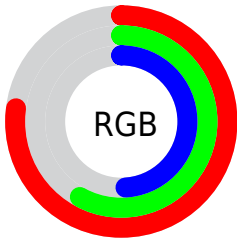
Format	Color
RYB	197, 160, 124
Decimal	12948604
CIELab	65.36, 15.22, 19.86
CIElCh	65, 25.021, 52.538
Yxy	34.5054, 0.3900, 0.3612
Android (android.graphics.Color)	4291138684 (0xFFC5947C)
YUV	159.9150, -17.7061, 32.5235
Hunter-Lab	58.7413, 10.4082, 17.1314

Details

The Decimal color **12948604** is a light color, and the websafe version is hex **CC9999**. A complement of this color would be **8170949**, and the grayscale version is **10526880**.

A 20% lighter version of the original color is **16763569**, and **9331019** is the 20% darker color. If you saturate the color by 10%, you get **12945256**, and if you desaturate by 10%, it is **12951952**.

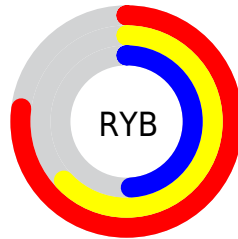
Distribution



Red (77%)

Green (58%)

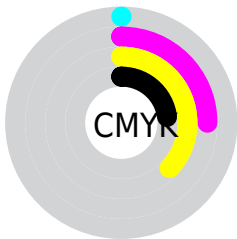
Blue (49%)



Red (77%)

Yellow (63%)

Blue (49%)

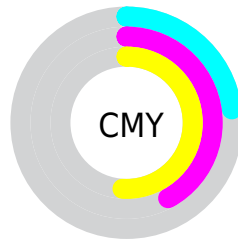


Cyan (0%)

Magenta (25%)

Yellow (37%)

Black (23%)



Cyan (23%)

Magenta (42%)

Yellow (51%)

Brightness & Saturation Gradients

These gradients show how the Decimal color 12948604 changes by changing the brightness by 10 percent. The first figure shows a shift by +10% for each color and the second figure -10%.

Similar to the brightness gradients but the following saturation gradients show a change of the Decimal color 12948604 by changing the saturation by 10% instead.

 12948604

 12948604

16777215

 11106915

 16763569

 9331019

 16770764

 7555380

 16777192

 5845535

 4201736

 2623232

 0

 12948604

 12948604

 12945256

 12951952

 12941909

 12955299

 12938305

 12958903

 12934957

 12962251

 12931610

 12965599

 12928262

 12968946

 12927232

 12972543

 12975871

 12976127

Harmonies

Analogous

The Analogous color harmony consists of three colors that are next to each other on the color wheel.



13406095



12948604



11836275

Triad

The Triadic color harmony groups three colors that are evenly spaced from another and form a triangle on the color wheel.



12948604



7056280



10197960

Complementary

The Complementary color scheme is a pair of colors which are on the opposite of each other on the color wheel.



12948604



8170949

Split Complementary

Split-complementary colors differ from the complementary color scheme. The scheme consists of three colors, the original color and two neighbors of the complement color.



8102603



12948604



6073263

Square

The Square scheme is like the rectangle color scheme, but the four colors are evenly spaced on the color wheel.



12948604



8693891



6465730



11965370

Rectangle

The Rectangle color scheme consists of four colors that form a rectangle on the color wheel.



12948604



10854515



6465730



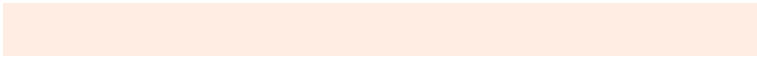
9477834

Sweetspot

The Sweet Spot groups the original color and five complimentary colors.



12948604



16772323



12942510



8418415



0



8421504

Same Dimension

The Same Dimension uses a secret algorithm to generate beautiful new colors.



12948604



16757903



12957820



6511962



10696192



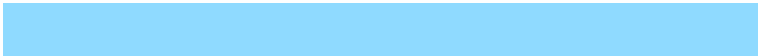
2362368

Inverse Universe

The Inverse Universe completely reimagines the original color for something new.



8170949



9427711



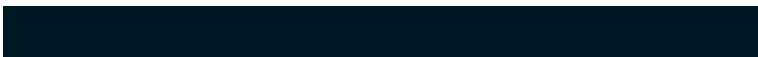
8161733



5922915



28323



6180

Previews

White Background



This preview shows how the Decimal color 12948604 looks on a white background.

Color Contrast Check

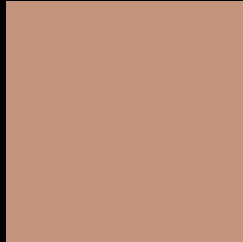
Large Text (above 18pt) WCAG AA × Fail

Any Text WCAG AA × Fail

Large Text (above 18pt) WCAG AAA × Fail

Any Text WCAG AAA × Fail

Black Background



This preview shows how the Decimal color 12948604 looks on a black background.

Color Contrast Check

Large Text (above 18pt) WCAG AA ✓ Pass

Any Text WCAG AA ✓ Pass

Large Text (above 18pt) WCAG AAA ✓ Pass

Any Text WCAG AAA ✓ Pass

If you want to check with other color combinations, try the [Color Contrast Checker](#).

Decimal 12948604 Background



This preview shows how black text looks on a background with the Decimal color 12948604.



This preview shows how white text looks on a background with the Decimal color 12948604.

Color Blindness Simulation

Color vision deficiency is a very complex topic, and I could not describe the different causes any better than Wikipedia does, so if you want to learn more, you should check out their [article about color blindness](#).


Dichromacy



Original Color
12948604

Protanopia
11050881

Deuteranopia
12228987



Tritanopia
13144219

Trichromacy



Original Color
12948604

Protanomaly
11770751

Deuteranomaly
12490619

Tritanomaly
13078928

Monochromacy



Original Color
12948604

Achromatopsia
10526880

Achromatomaly
11377811

CSS Examples

Text

The CSS property to change the color of the text to Decimal 12948604 is called "color". The color property can be set on classes, ids or directly on the HTML element.

This example shows how text in the color #C5947C looks like.

```
.text, #text, p{  
    color:#C5947C  
}
```

If you want to add a text shadow in that color use the text-shadow property, you can generate a text shadow directly with our [CSS Text Shadow Generator](#).

Here you see how black text with a 4 pixel #C5947C colored shadow looks like.

```
.shadow{ text-shadow: 4px 4px 2px #C5947C
}
```

Border

The CSS property to change the border of an element to Decimal 12948604 is called "border". The border property can be set on classes, ids or directly on the HTML element.

This example shows the color as border, it can be applied via the CSS property "border" or "border-color".

```
.border, #border, table{ border:4px solid
#C5947C }
```

If only the border color should be changed use the property `border-color`.

```
.border{ border-color:#C5947C }
```

If you want to add a box shadow in that color use:

Here you see how a box with a 4 pixel #C5947C colored shadow looks like.

```
.boxshadow{ -moz-box-shadow:4px 4px 4px  
4px #C5947C; -webkit-box-shadow:4px 4px  
4px 4px #C5947C; box-shadow:4px 4px 4px  
4px #C5947C }
```

Background

The CSS property to change the background color of an element to Decimal 12948604 is called "background". The background property can be set on classes, ids or directly on the HTML element.

```
.background, #background, body{  
background:#C5947C }
```

If only the background color should be changed can be used:

```
.background{ background-color:#C5947C }
```

This example shows the color as background, it is applied via the CSS property "background".

To optimize and compress your CSS code, you can use our [online CSS compressor and optimizer](#) based on csstidy. If you want to create a linear or radial gradient as background or border, check our [CSS Gradient Generator](#).

Hey! You found this booklet interesting? Support Converting Colors with the new Membership Option!

The pro membership hides all ads, plus gives you double the colors in the color bucket, and more awesome pro features!

[Learn more, Memberships starting at \\$2.50/m!](#)

**Follow me
on Twitter!**

@ConvertingColor