

# Converting Colors

Decimal(12948853)

Have a look what the booklet for  
Decimal(12948853) contains.

<b>Decimal(12948853)</b> .....	3
<i><b>Conversions</b></i> .....	4
<i><b>Details</b></i> .....	6
<i><b>Harmonies</b></i> .....	11
<i><b>Previews</b></i> .....	23
<i><b>Color Blindness Simulation</b></i> .....	26
<i><b>CSS Examples</b></i> .....	29

# **Color**

**Decimal(12948853)**

# Conversions

## Conversions Part 1

<b>Format</b>	<b>Color</b>
Hex	C59575
RGB	197, 149, 117
RGB Percent	77%, 58%, 46%
CMY	0.2275, 0.4157, 0.5412
CMYK	0.00, 0.24, 0.41, 0.23
HSL	24°, 41%, 62%
HSV	24°, 41%, 77%
XYZ	36.9843, 34.6496, 21.5684
YIQ	159.7040, 38.8800, 0.2240

# Conversions

## Conversions Part 2

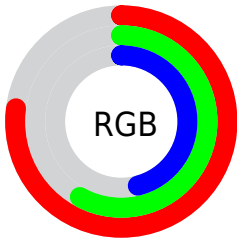
Format	Color
<a href="#">RYB</a>	<a href="#">197, 170, 117</a>
Decimal	<a href="#">12948853</a>
CIELab	<a href="#">65.47, 13.85, 23.89</a>
CIELCh	<a href="#">65, 27.610, 59.902</a>
Yxy	<a href="#">34.6496, 0.3968, 0.3718</a>
Android (android.graphics.Color)	<a href="#">4291138933 (0xFFC59575)</a>
YUV	<a href="#">159.7040, -21.0531, 32.7086</a>
Hunter-Lab	<a href="#">58.8639, 9.1401, 19.4802</a>

# Details

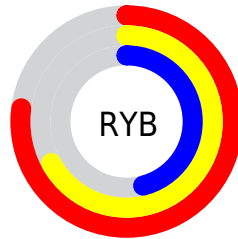
The Decimal color **12948853** is a light color, and the websafe version is hex **CC9966**. A complement of this color would be **7710149**, and the grayscale version is **10526880**.

A 20% lighter version of the original color is **16763817**, and **9265732** is the 20% darker color. If you saturate the color by 10%, you get **12945761**, and if you desaturate by 10%, it is **12951945**.

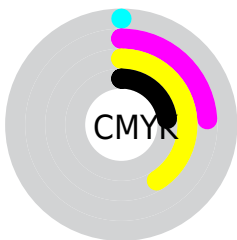
# Distribution



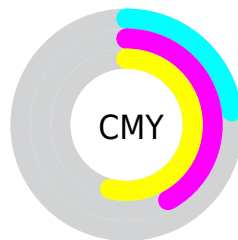
- Red (77%)
- Green (58%)
- Blue (46%)



- Red (77%)
- Yellow (67%)
- Blue (46%)



- Cyan (0%)
- Magenta (24%)
- Yellow (41%)
- Black (23%)



- Cyan (23%)
- Magenta (42%)
- Yellow (54%)

# Brightness & Saturation Gradients

These gradients show how the Decimal color 12948853 changes by changing the brightness by 10 percent. The first figure shows a shift by +10% for each color and the second figure -10%.

Similar to the brightness gradients but the following saturation gradients show a change of the Decimal color 12948853 by changing the saturation by 10% instead.



 12948853

 12948853

16777215

 11107164

 16763817

 9265732

 16771013

 7555630

 16777185

 5780248

16777213

 4201984

 2557952

 0

 12948853

 12948853

 12945761

 12951945

 12942670

 12955036

 12939834

 12957872

 12936742

 12960964

 12933650

 12964056

 12930816

 12967147

 12970239

 12973311

 12976127

# Harmonies

## Analogous

The Analogous color harmony consists of three colors that are next to each other on the color wheel.



13667976



12948853



11640174

# Triad

The Triadic color harmony groups three colors that are evenly spaced from another and form a triangle on the color wheel.



12948853



6270366



10656202

# Complementary

The Complementary color scheme is a pair of colors which are on the opposite of each other on the color wheel.



12948853



7710149

# Split Complementary

Split-complementary colors differ from the complementary color scheme. The scheme consists of three colors, the original color and two neighbors of the complement color.



8364496



12948853



5352631

# Square

The Square scheme is like the rectangle color scheme, but the four colors are evenly spaced on the color wheel.



12948853



8039045



6203593



12554680

# Rectangle

The Rectangle color scheme consists of four colors that form a rectangle on the color wheel.



12948853



10527600



6203593



9936077

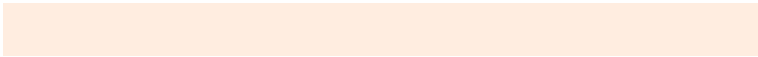


# Sweetspot

The Sweet Spot groups the original color and five complimentary colors.



12948853



16772576



12940709



8418670



0



8421504



# Same Dimension

The Same Dimension uses a secret algorithm to generate beautiful new colors.



12948853



16757890



12959093



6511962



10699008



2362880

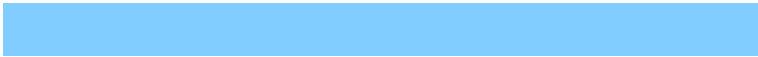


# Inverse Universe

The Inverse Universe completely reimagines the original color for something new.



7710149



8572415



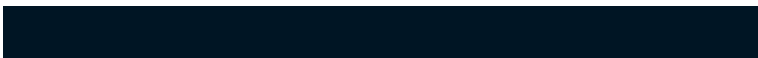
7699909



5922659



25251



5412



# Previews

## White Background



This preview shows how the Decimal color 12948853 looks on a white background.

## Color Contrast Check

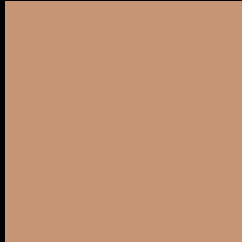
Large Text (above 18pt) WCAG AA × Fail

Any Text WCAG AA × Fail

Large Text (above 18pt) WCAG AAA × Fail

Any Text WCAG AAA × Fail

# Black Background



This preview shows how the Decimal color 12948853 looks on a black background.

## Color Contrast Check

Large Text (above 18pt) WCAG AA ✓ Pass

Any Text WCAG AA ✓ Pass

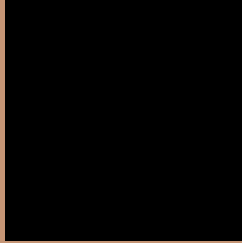
Large Text (above 18pt) WCAG AAA ✓ Pass

Any Text WCAG AAA ✓ Pass

If you want to check with other color combinations, try the [Color Contrast Checker](#).



## Decimal 12948853 Background



This preview shows how black text looks on a background with the Decimal color 12948853.




This preview shows how white text looks on a background with the Decimal color 12948853.

# Color Blindness Simulation

Color vision deficiency is a very complex topic, and I could not describe the different causes any better than Wikipedia does, so if you want to learn more, you should check out their [article about color blindness](#).

## Dichromacy





**Tritanopia**  
13209755

# Trichromacy



**Original Color**  
12948853

**Protanomaly**  
11836280

**Deuteranomaly**  
12621940

**Tritanomaly**  
13144717

# Monochromacy



**Original Color**  
12948853

**Achromatopsia**  
10526880

**Achromatomaly**  
11377808

# CSS Examples

## Text

The CSS property to change the color of the text to Decimal 12948853 is called "color". The color property can be set on classes, ids or directly on the HTML element.

This example shows how text in the color #C59575 looks like.

```
.text, #text, p{  
    color:#C59575  
}
```

If you want to add a text shadow in that color use the text-shadow property, you can generate a text shadow directly with our [CSS Text Shadow Generator](#).

Here you see how black text with a 4 pixel #C59575 colored shadow looks like.

```
.shadow{ text-shadow: 4px 4px 2px #C59575
}
```

## Border

The CSS property to change the border of an element to Decimal 12948853 is called "border". The border property can be set on classes, ids or directly on the HTML element.

This example shows the color as border, it can be applied via the CSS property "border" or "border-color".

```
.border, #border, table{ border:4px solid
#C59575 }
```

If only the border color should be changed use the property `border-color`.

```
.border{ border-color:#C59575 }
```

If you want to add a box shadow in that color use:

Here you see how a box with a 4 pixel #C59575 colored shadow looks like.

```
.boxshadow{ -moz-box-shadow:4px 4px 4px  
4px #C59575; -webkit-box-shadow:4px 4px  
4px 4px #C59575; box-shadow:4px 4px 4px  
4px #C59575 }
```

# Background

The CSS property to change the background color of an element to Decimal 12948853 is called "background". The background property can be set on classes, ids or directly on the HTML element.

```
.background, #background, body{  
background:#C59575 }
```

If only the background color should be changed can be used:

```
.background{ background-color:#C59575 }
```

This example shows the color as background, it is applied via the CSS property "background".

To optimize and compress your CSS code, you can use our [online CSS compressor and optimizer](#) based on csstidy. If you want to create a linear or radial gradient as background or border, check our [CSS Gradient Generator](#).



Hey! You found this booklet interesting? Support Converting Colors with the new Membership Option!

The pro membership hides all ads, plus gives you double the colors in the color bucket, and more awesome pro features!

**[Learn more, Memberships starting at \\$2.50/m!](#)**

**Follow me  
on Twitter!**

@ConvertingColor