

# Converting Colors

Decimal(12949864)

Have a look what the booklet for  
Decimal(12949864) contains.

<b>Decimal(12949864)</b> .....	3
<i><b>Conversions</b></i> .....	4
<i><b>Details</b></i> .....	6
<i><b>Harmonies</b></i> .....	11
<i><b>Previews</b></i> .....	23
<i><b>Color Blindness Simulation</b></i> .....	26
<i><b>CSS Examples</b></i> .....	29

# **Color**

**Decimal(12949864)**

# Conversions

## Conversions Part 1

Format	Color
Hex	C59968
RGB	197, 153, 104
RGB Percent	77%, 60%, 41%
CMY	0.2275, 0.4000, 0.5922
CMYK	0.00, 0.22, 0.47, 0.23
HSL	32°, 44%, 59%
HSV	32°, 47%, 77%
XYZ	36.9159, 35.6523, 18.0326
YIQ	160.5700, 41.9530, -5.9110

# Conversions

## Conversions Part 2

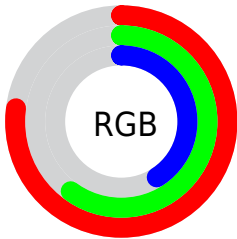
<b>Format</b>	<b>Color</b>
<b>RYB</b>	188, 197, 104
Decimal	12949864
CIELab	66.25, 10.27, 31.98
CIELCh	66, 33.591, 72.206
Yxy	35.6523, 0.4075, 0.3935
Android (android.graphics.Color)	4291139944 (0xFFC59968)
YUV	160.5700, -27.8890, 31.9491
Hunter-Lab	59.7095, 5.8674, 23.8908

# Details

The Decimal color **12949864** is a light color, and the websafe version is hex **CC9966**. A complement of this color would be **6853829**, and the grayscale version is **10592673**.

A 20% lighter version of the original color is **16764828**, and **9266744** is the 20% darker color. If you saturate the color by 10%, you get **12947540**, and if you desaturate by 10%, it is **12952188**.

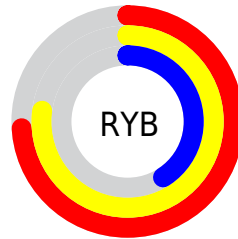
# Distribution



Red (77%)

Green (60%)

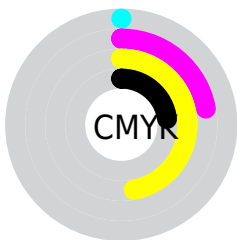
Blue (41%)



Red (74%)

Yellow (77%)

Blue (41%)

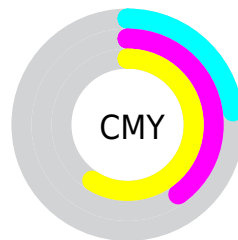


Cyan (0%)

Magenta (22%)

Yellow (47%)

Black (23%)



Cyan (23%)

Magenta (40%)

Yellow (59%)

# Brightness & Saturation Gradients

These gradients show how the Decimal color 12949864 changes by changing the brightness by 10 percent. The first figure shows a shift by +10% for each color and the second figure -10%.

Similar to the brightness gradients but the following saturation gradients show a change of the Decimal color 12949864 by changing the saturation by 10% instead.



 12949864

 12949864

16777215

 11108175

 16764828

 9266744

 16772279

 7491105

 16777171

 5781258

 16777199

 4137472

 2428160

 0

 12949864

 12949864

 12947540

 12952188

12944961

12954767

12942637

12957091

12940313

12959415

12937734

12961995

12937216

12964318

12966642

12969215

12971519

# Harmonies

## Analogous

The Analogous color harmony consists of three colors that are next to each other on the color wheel.



14126970



12949864



11117413

# Triad

The Triadic color harmony groups three colors that are evenly spaced from another and form a triangle on the color wheel.



12949864



4108717



11834830

# Complementary

The Complementary color scheme is a pair of colors which are on the opposite of each other on the color wheel.



12949864



6853829

# Split Complementary

Split-complementary colors differ from the complementary color scheme. The scheme consists of three colors, the original color and two neighbors of the complement color.



9085148



12949864



3387337

# Square

The Square scheme is like the rectangle color scheme, but the four colors are evenly spaced on the color wheel.



12949864



6533262



5941722



13733044

# Rectangle

The Rectangle color scheme consists of four colors that form a rectangle on the color wheel.



12949864



9677165



5941722



11049172

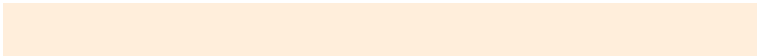


# Sweetspot

The Sweet Spot groups the original color and five complimentary colors.



12949864



16772827



12937365



8418666



0



8421504



# Same Dimension

The Same Dimension uses a secret algorithm to generate beautiful new colors.



12949864



16759406



12830056



6512474



10704384



2364160

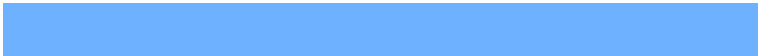


# Inverse Universe

The Inverse Universe completely reimagines the original color for something new.



6853829



7254783



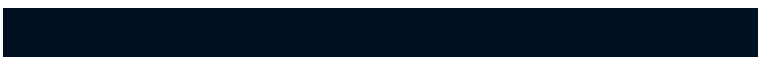
6973637



5922403



19875

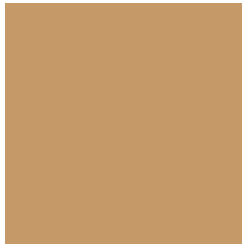


4388



# Previews

## White Background



This preview shows how the Decimal color 12949864 looks on a white background.

## Color Contrast Check

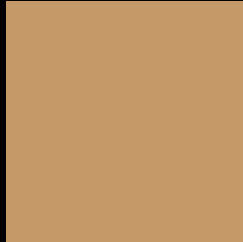
Large Text (above 18pt) WCAG AA × Fail

Any Text WCAG AA × Fail

Large Text (above 18pt) WCAG AAA × Fail

Any Text WCAG AAA × Fail

# Black Background



This preview shows how the Decimal color 12949864 looks on a black background.

## Color Contrast Check

Large Text (above 18pt) WCAG AA ✓ Pass

Any Text WCAG AA ✓ Pass

Large Text (above 18pt) WCAG AAA ✓ Pass

Any Text WCAG AAA ✓ Pass

If you want to check with other color combinations, try the [Color Contrast Checker](#).



## Decimal 12949864 Background



This preview shows how black text looks on a background with the Decimal color 12949864.



This preview shows how white text looks on a background with the Decimal color 12949864.

# Color Blindness Simulation

Color vision deficiency is a very complex topic, and I could not describe the different causes any better than Wikipedia does, so if you want to learn more, you should check out their [article about color blindness](#).

## Dichromacy



**Original Color**  
12949864

**Protanopia**  
11510123

**Deuteranopia**  
12753512

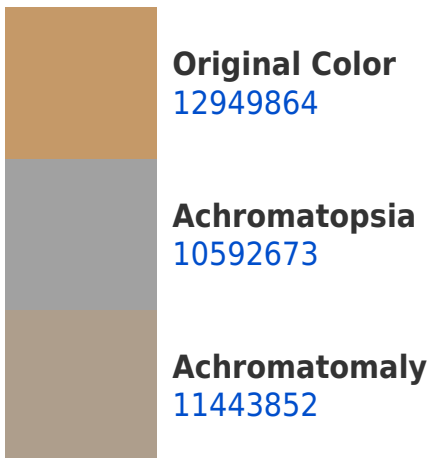


**Tritanopia**  
13275805

# Trichromacy



# Monochromacy



# CSS Examples

## Text

The CSS property to change the color of the text to Decimal 12949864 is called "color". The color property can be set on classes, ids or directly on the HTML element.

This example shows how text in the color #C59968 looks like.

```
.text, #text, p{  
  color:#C59968  
}
```

If you want to add a text shadow in that color use the text-shadow property, you can generate a text shadow directly with our [CSS Text Shadow Generator](#).

Here you see how black text with a 4 pixel #C59968 colored shadow looks like.

```
.shadow{ text-shadow: 4px 4px 2px #C59968
}
```

## Border

The CSS property to change the border of an element to Decimal 12949864 is called "border". The border property can be set on classes, ids or directly on the HTML element.

This example shows the color as border, it can be applied via the CSS property "border" or "border-color".

```
.border, #border, table{ border:4px solid
#C59968 }
```

If only the border color should be changed use the property `border-color`.

```
.border{ border-color:#C59968 }
```

If you want to add a box shadow in that color use:

Here you see how a box with a 4 pixel #C59968 colored shadow looks like.

```
.boxshadow{ -moz-box-shadow:4px 4px 4px  
4px #C59968; -webkit-box-shadow:4px 4px  
4px 4px #C59968; box-shadow:4px 4px 4px  
4px #C59968 }
```

# Background

The CSS property to change the background color of an element to Decimal 12949864 is called "background". The background property can be set on classes, ids or directly on the HTML element.

```
.background, #background, body{  
background:#C59968 }
```

If only the background color should be changed can be used:

```
.background{ background-color:#C59968 }
```

This example shows the color as background, it is applied via the CSS property "background".

To optimize and compress your CSS code, you can use our [online CSS compressor and optimizer](#) based on csstidy. If you want to create a linear or radial gradient as background or border, check our [CSS Gradient Generator](#).



Hey! You found this booklet interesting? Support Converting Colors with the new Membership Option!

The pro membership hides all ads, plus gives you double the colors in the color bucket, and more awesome pro features!

**[Learn more, Memberships starting at \\$2.50/m!](#)**

**Follow me  
on Twitter!**

@ConvertingColor