

Converting Colors

Decimal(12950666)

Have a look what the booklet for
Decimal(12950666) contains.

Decimal(12950666)	3
<i>Conversions</i>	4
<i>Details</i>	6
<i>Harmonies</i>	11
<i>Previews</i>	23
<i>Color Blindness Simulation</i>	26
<i>CSS Examples</i>	29

Color

Decimal(12950666)

Conversions

Conversions Part 1

Format	Color
Hex	C59C8A
RGB	197, 156, 138
RGB Percent	77%, 61%, 54%
CMY	0.2275, 0.3882, 0.4588
CMYK	0.00, 0.21, 0.30, 0.23
HSL	18°, 34%, 66%
HSV	18°, 30%, 77%
XYZ	39.5019, 37.4822, 29.1976
YIQ	166.2070, 30.2140, 3.0940

Conversions

Conversions Part 2

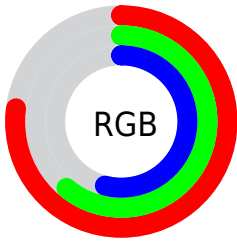
Format	Color
R _Y B	197, 164, 138
Decimal	12950666
CIE Lab	67.64, 12.63, 15.23
CIE LCh	68, 19.785, 50.340
Yxy	37.4822, 0.3720, 0.3530
Android (android.graphics.Color)	4291140746 (0xFFC59C8A)
YUV	166.2070, -13.9061, 27.0055
Hunter-Lab	61.2227, 8.0312, 14.5801

Details

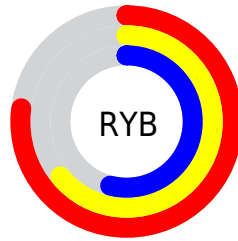
The Decimal color **12950666** is a light color, and the websafe version is hex **CC9999**. A complement of this color would be **9089989**, and the grayscale version is **10921638**.

A 20% lighter version of the original color is **16700351**, and **9333080** is the 20% darker color. If you saturate the color by 10%, you get **12947062**, and if you desaturate by 10%, it is **12954270**.

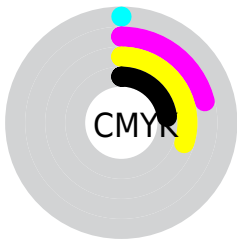
Distribution



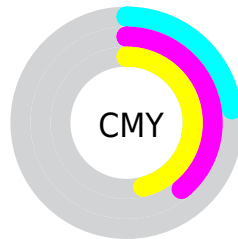
- Red (77%)
- Green (61%)
- Blue (54%)



- Red (77%)
- Yellow (64%)
- Blue (54%)



- Cyan (0%)
- Magenta (21%)
- Yellow (30%)
- Black (23%)



- Cyan (23%)
- Magenta (39%)
- Yellow (46%)

Brightness & Saturation Gradients


These gradients show how the Decimal color 12950666 changes by changing the brightness by 10 percent. The first figure shows a shift by +10% for each color and the second figure -10%.

Similar to the brightness gradients but the following saturation gradients show a change of the Decimal color 12950666 by changing the saturation by 10% instead.

 12950666

 12950666

16777215

 11108977

 16700351

 9333080

 16773083

 7622977

 16777208

 5912874

 4334614

 2821888

 393216

 0

 12950666

 12950666

 12947062

 12954270

 12943715

 12957617

 12940111

 12961221

 12936507

 12964825

 12933160

 12968173

 12929556

 12971775

 12925952

 12975359

 12976127

Harmonies

Analogous

The Analogous color harmony consists of three colors that are next to each other on the color wheel.



13277593



12950666



12100226

Triad

The Triadic color harmony groups three colors that are evenly spaced from another and form a triangle on the color wheel.



12950666



8368030



10527430

Complementary

The Complementary color scheme is a pair of colors which are on the opposite of each other on the color wheel.



12950666



9089989

Split Complementary

Split-complementary colors differ from the complementary color scheme. The scheme consists of three colors, the original color and two neighbors of the complement color.



9021639



12950666



7647152

Square

The Square scheme is like the rectangle color scheme, but the four colors are evenly spaced on the color wheel.



12950666



9546894



7908800



11967676

Rectangle

The Rectangle color scheme consists of four colors that form a rectangle on the color wheel.



12950666



11314818



7908800



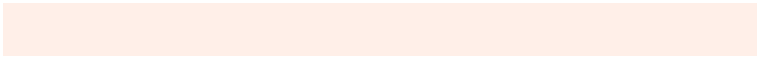
10003656

Sweetspot

The Sweet Spot groups the original color and five complimentary colors.



12950666



16773096



12946099



8418929



0



8421504

Same Dimension

The Same Dimension uses a secret algorithm to generate beautiful new colors.



12950666



16760739



12958090



6511962



10695168



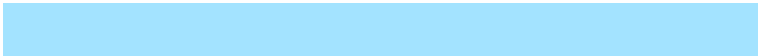
2362112

Inverse Universe

The Inverse Universe completely reimagines the original color for something new.



9089989



10740735



9082565



5922915



29091



6436

Previews

White Background



This preview shows how the Decimal color 12950666 looks on a white background.

Color Contrast Check

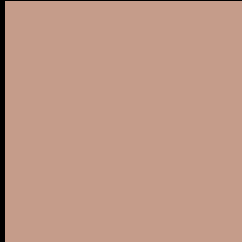
Large Text (above 18pt) WCAG AA × Fail

Any Text WCAG AA × Fail

Large Text (above 18pt) WCAG AAA × Fail

Any Text WCAG AAA × Fail

Black Background



This preview shows how the Decimal color 12950666 looks on a black background.

Color Contrast Check

Large Text (above 18pt) WCAG AA ✓ Pass

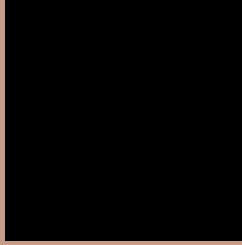
Any Text WCAG AA ✓ Pass

Large Text (above 18pt) WCAG AAA ✓ Pass

Any Text WCAG AAA ✓ Pass

If you want to check with other color combinations, try the [Color Contrast Checker](#).

Decimal 12950666 Background



This preview shows how black text looks on a background with the Decimal color 12950666.




This preview shows how white text looks on a background with the Decimal color 12950666.

Color Blindness Simulation

Color vision deficiency is a very complex topic, and I could not describe the different causes any better than Wikipedia does, so if you want to learn more, you should check out their [article about color blindness](#).

Dichromacy





Tritanopia
13146276

Trichromacy



Original Color
12950666

Protanomaly
11969165

Deuteranomaly
12689033

Tritanomaly
13080987

Monochromacy



Original Color
12950666

Achromatopsia
10921638

Achromatomaly
11641500

CSS Examples

Text

The CSS property to change the color of the text to Decimal 12950666 is called "color". The color property can be set on classes, ids or directly on the HTML element.

This example shows how text in the color #C59C8A looks like.

```
.text, #text, p{  
  color:#C59C8A  
}
```

If you want to add a text shadow in that color use the text-shadow property, you can generate a text shadow directly with our [CSS Text Shadow Generator](#).

Here you see how black text with a 4 pixel #C59C8A colored shadow looks like.

```
.shadow{ text-shadow: 4px 4px 2px #C59C8A
}
```

Border

The CSS property to change the border of an element to Decimal 12950666 is called "border". The border property can be set on classes, ids or directly on the HTML element.

This example shows the color as border, it can be applied via the CSS property "border" or "border-color".

```
.border, #border, table{ border:4px solid
#C59C8A }
```

If only the border color should be changed use the property `border-color`.

```
.border{ border-color:#C59C8A }
```

If you want to add a box shadow in that color use:

Here you see how a box with a 4 pixel #C59C8A colored shadow looks like.

```
.boxshadow{ -moz-box-shadow:4px 4px 4px  
4px #C59C8A; -webkit-box-shadow:4px 4px  
4px 4px #C59C8A; box-shadow:4px 4px 4px  
4px #C59C8A }
```

Background

The CSS property to change the background color of an element to Decimal 12950666 is called "background". The background property can be set on classes, ids or directly on the HTML element.

```
.background, #background, body{  
background:#C59C8A }
```

If only the background color should be changed can be used:

```
.background{ background-color:#C59C8A }
```

This example shows the color as background, it is applied via the CSS property "background".

To optimize and compress your CSS code, you can use our [online CSS compressor and optimizer](#) based on csstidy. If you want to create a linear or radial gradient as background or border, check our [CSS Gradient Generator](#).

Hey! You found this booklet interesting? Support Converting Colors with the new Membership Option!

The pro membership hides all ads, plus gives you double the colors in the color bucket, and more awesome pro features!

[Learn more, Memberships starting at \\$2.50/m!](#)

**Follow me
on Twitter!**

@ConvertingColor