

# Converting Colors

Decimal(12951453)

Have a look what the booklet for  
Decimal(12951453) contains.

<b>Decimal(12951453)</b> .....	3
<i><b>Conversions</b></i> .....	4
<i><b>Details</b></i> .....	6
<i><b>Harmonies</b></i> .....	11
<i><b>Previews</b></i> .....	23
<i><b>Color Blindness Simulation</b></i> .....	26
<i><b>CSS Examples</b></i> .....	29

# **Color**

**Decimal(12951453)**

# Conversions

## Conversions Part 1

Format	Color
Hex	C59F9D
RGB	197, 159, 157
RGB Percent	77%, 62%, 62%
CMY	0.2275, 0.3765, 0.3843
CMYK	0.00, 0.19, 0.20, 0.23
HSL	3°, 26%, 69%
HSV	3°, 20%, 77%
XYZ	41.5099, 39.1009, 37.2577
YIQ	170.1340, 23.2900, 7.4340

# Conversions

## Conversions Part 2

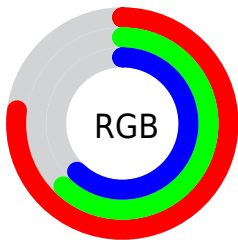
<b>Format</b>	<b>Color</b>
<b>RYB</b>	197, 159, 157
Decimal	12951453
CIELab	68.82, 13.73, 6.36
CIELCh	69, 15.131, 24.857
Yxy	39.1009, 0.3522, 0.3317
Android (android.graphics.Color)	4291141533 (0xFFC59F9D)
YUV	170.1340, -6.4751, 23.5615
Hunter-Lab	62.5307, 9.0653, 8.4447

# Details

The Decimal color **12951453** is a light color, and the websafe version is hex **CC9999**. A complement of this color would be **10339269**, and the grayscale version is **11184810**.

A 20% lighter version of the original color is **16701140**, and **9399146** is the 20% darker color. If you saturate the color by 10%, you get **12946569**, and if you desaturate by 10%, it is **12956337**.

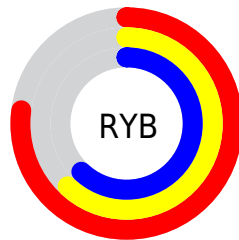
# Distribution



Red (77%)

Green (62%)

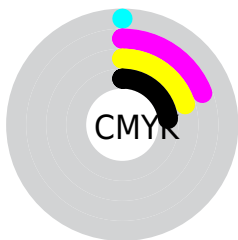
Blue (62%)



Red (77%)

Yellow (62%)

Blue (62%)

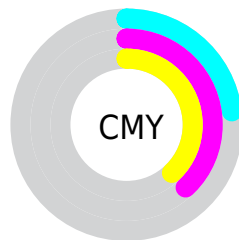


Cyan (0%)

Magenta (19%)

Yellow (20%)

Black (23%)



Cyan (23%)

Magenta (38%)

Yellow (38%)

# Brightness & Saturation Gradients

These gradients show how the Decimal color 12951453 changes by changing the brightness by 10 percent. The first figure shows a shift by +10% for each color and the second figure -10%.

Similar to the brightness gradients but the following saturation gradients show a change of the Decimal color 12951453 by changing the saturation by 10% instead.



 12951453

 12951453

16777215

 11109763

 16701140

 9399146

 16773872

 7689042

 5979195

 4400677

 2887952

 1310720

 0

 12951453

 12951453

 12946569

 12956337

 12941942

 12960964

 12937058

 12965848

 12932174

 12970732

 12927291

 12975615

 12922663

 12976127

 12917779

 12913152

# Harmonies

## Analogous

The Analogous color harmony consists of three colors that are next to each other on the color wheel.



12754859



12951453



12624530

# Triad

The Triadic color harmony groups three colors that are evenly spaced from another and form a triangle on the color wheel.



12951453



9940632



9874115

# Complementary

The Complementary color scheme is a pair of colors which are on the opposite of each other on the color wheel.



12951453



10339269

# Split Complementary

Split-complementary colors differ from the complementary color scheme. The scheme consists of three colors, the original color and two neighbors of the complement color.



9023166



12951453



9089189

# Square

The Square scheme is like the rectangle color scheme, but the four colors are evenly spaced on the color wheel.



12951453



10922895



8695987



11052481

# Rectangle

The Rectangle color scheme consists of four colors that form a rectangle on the color wheel.



12951453



12166542



8695987



9546690



# Sweetspot

The Sweet Spot groups the original color and five complimentary colors.



12951453



16773360



12950979



8419191



0



8421504



# Same Dimension

The Same Dimension uses a secret algorithm to generate beautiful new colors.



12951453



16762306



12956317



6511194



10684416



2359808



# Inverse Universe

The Inverse Universe completely reimagines the original color for something new.



10339269



12778751



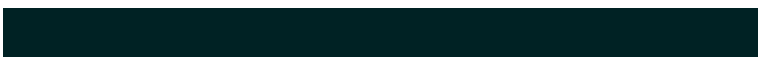
10334149



5923683



39843

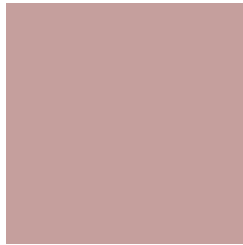


8740



# Previews

## White Background



This preview shows how the Decimal color 12951453 looks on a white background.

## Color Contrast Check

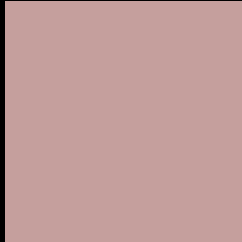
Large Text (above 18pt) WCAG AA × Fail

Any Text WCAG AA × Fail

Large Text (above 18pt) WCAG AAA × Fail

Any Text WCAG AAA × Fail

# Black Background



This preview shows how the Decimal color 12951453 looks on a black background.

## Color Contrast Check

Large Text (above 18pt) WCAG AA ✓ Pass

Any Text WCAG AA ✓ Pass

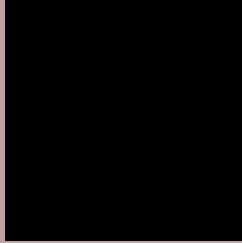
Large Text (above 18pt) WCAG AAA ✓ Pass

Any Text WCAG AAA ✓ Pass

If you want to check with other color combinations, try the [Color Contrast Checker](#).



## Decimal 12951453 Background



This preview shows how black text looks on a background with the Decimal color 12951453.



This preview shows how white text looks on a background with the Decimal color 12951453.

# Color Blindness Simulation

Color vision deficiency is a very complex topic, and I could not describe the different causes any better than Wikipedia does, so if you want to learn more, you should check out their [article about color blindness](#).

## Dichromacy





**Tritanopia**  
13016489

# Trichromacy



**Original Color**  
12951453

**Protanomaly**  
11969696

**Deuteranomaly**  
12624284

**Tritanomaly**  
13016741

# Monochromacy



**Original Color**  
12951453

**Achromatopsia**  
11184810

**Achromatomaly**  
11839141

# CSS Examples

## Text

The CSS property to change the color of the text to Decimal 12951453 is called "color". The color property can be set on classes, ids or directly on the HTML element.

This example shows how text in the color #C59F9D looks like.

```
.text, #text, p{  
    color:#C59F9D  
}
```

If you want to add a text shadow in that color use the text-shadow property, you can generate a text shadow directly with our [CSS Text Shadow Generator](#).

Here you see how black text with a 4 pixel #C59F9D colored shadow looks like.

```
.shadow{ text-shadow: 4px 4px 2px #C59F9D
}
```

## Border

The CSS property to change the border of an element to Decimal 12951453 is called "border". The border property can be set on classes, ids or directly on the HTML element.

This example shows the color as border, it can be applied via the CSS property "border" or "border-color".

```
.border, #border, table{ border:4px solid
#C59F9D }
```

If only the border color should be changed use the property `border-color`.

```
.border{ border-color:#C59F9D }
```

If you want to add a box shadow in that color use:

Here you see how a box with a 4 pixel #C59F9D colored shadow looks like.

```
.boxshadow{ -moz-box-shadow:4px 4px 4px  
4px #C59F9D; -webkit-box-shadow:4px 4px  
4px 4px #C59F9D; box-shadow:4px 4px 4px  
4px #C59F9D }
```

# Background

The CSS property to change the background color of an element to Decimal 12951453 is called "background". The background property can be set on classes, ids or directly on the HTML element.

```
.background, #background, body{  
background:#C59F9D }
```

If only the background color should be changed can be used:

```
.background{ background-color:#C59F9D }
```

This example shows the color as background, it is applied via the CSS property "background".

To optimize and compress your CSS code, you can use our [online CSS compressor and optimizer](#) based on csstidy. If you want to create a linear or radial gradient as background or border, check our [CSS Gradient Generator](#).



Hey! You found this booklet interesting? Support Converting Colors with the new Membership Option!

The pro membership hides all ads, plus gives you double the colors in the color bucket, and more awesome pro features!

**[Learn more, Memberships starting at \\$2.50/m!](#)**

**Follow me  
on Twitter!**

@ConvertingColor