

Converting Colors

Decimal(12952746)

Have a look what the booklet for
Decimal(12952746) contains.

Decimal(12952746)	3
<i>Conversions</i>	4
<i>Details</i>	6
<i>Harmonies</i>	11
<i>Previews</i>	23
<i>Color Blindness Simulation</i>	26
<i>CSS Examples</i>	29

Color

Decimal(12952746)

Conversions

Conversions Part 1

Format	Color
Hex	C5A4AA
RGB	197, 164, 170
RGB Percent	77%, 64%, 67%
CMY	0.2275, 0.3569, 0.3333
CMYK	0.00, 0.17, 0.14, 0.23
HSL	349°, 22%, 71%
HSV	349°, 17%, 77%
XYZ	43.5571, 41.3235, 43.7107
YIQ	174.5510, 17.7420, 8.8620

Conversions

Conversions Part 2

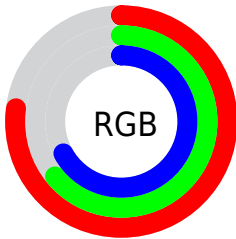
Format	Color
R _Y B	197, 164, 170
Decimal	12952746
CIE Lab	70.40, 13.07, 1.43
CIE LCh	70, 13.143, 6.247
Yxy	41.3235, 0.3387, 0.3214
Android (android.graphics.Color)	4291142826 (0xFFC5A4AA)
YUV	174.5510, -2.2436, 19.6878
Hunter-Lab	64.2834, 8.4521, 4.6830

Details

The Decimal color **12952746** is a light color, and the websafe version is hex **CC9999**. A complement of this color would be **10798527**, and the grayscale version is **11513775**.

A 20% lighter version of the original color is **16702433**, and **9400438** is the 20% darker color. If you saturate the color by 10%, you get **12947610**, and if you desaturate by 10%, it is **12957882**.

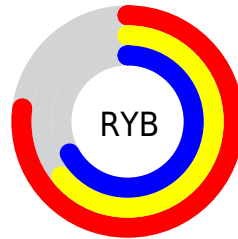
Distribution



Red (77%)

Green (64%)

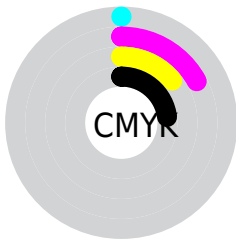
Blue (67%)



Red (77%)

Yellow (64%)

Blue (67%)

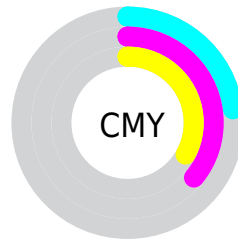


Cyan (0%)

Magenta (17%)

Yellow (14%)

Black (23%)



Cyan (23%)

Magenta (36%)

Yellow (33%)

Brightness & Saturation Gradients


These gradients show how the Decimal color 12952746 changes by changing the brightness by 10 percent. The first figure shows a shift by +10% for each color and the second figure -10%.

Similar to the brightness gradients but the following saturation gradients show a change of the Decimal color 12952746 by changing the saturation by 10% instead.

 12952746

 12952746

16777215

 11176592

 16702433

 9400438

 16775422

 7690333

 6045766

 4467247

 2954523

 1769472

 0

 12952746

 12952746

 12947610

 12957882

 12942730

 12962762

 12937594

 12967898

 12932458

 12973034

 12927577

 12976123

 12922441

 12976127

 12917305

 12912169

 12910628

Harmonies

Analogous

The Analogous color harmony consists of three colors that are next to each other on the color wheel.



12494262



12952746



12952991

Triad

The Triadic color harmony groups three colors that are evenly spaced from another and form a triangle on the color wheel.



12952746



10924185



9810114

Complementary

The Complementary color scheme is a pair of colors which are on the opposite of each other on the color wheel.



12952746



10798527

Split Complementary

Split-complementary colors differ from the complementary color scheme. The scheme consists of three colors, the original color and two neighbors of the complement color.



9351866



12952746



10072738

Square

The Square scheme is like the rectangle color scheme, but the four colors are evenly spaced on the color wheel.



12952746



11775125



9483182



10661060

Rectangle

The Rectangle color scheme consists of four colors that form a rectangle on the color wheel.



12952746



12691353



9483182



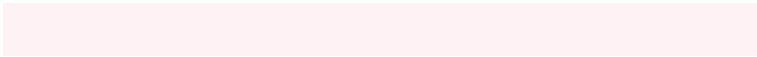
9613760

Sweetspot

The Sweet Spot groups the original color and five complimentary colors.



12952746



16773877



12559557



8419449



0



8421504

Same Dimension

The Same Dimension uses a secret algorithm to generate beautiful new colors.



12952746



16764117



12955300



6511195



10682398



2359302

Inverse Universe

The Inverse Universe completely reimagines the original color for something new.



12952746



16764117



10795973



6511195



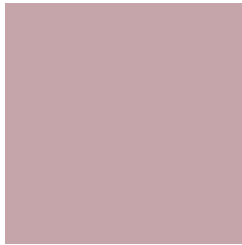
10682398



2359302

Previews

White Background



This preview shows how the Decimal color 12952746 looks on a white background.

Color Contrast Check

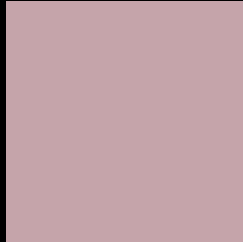
Large Text (above 18pt) WCAG AA × Fail

Any Text WCAG AA × Fail

Large Text (above 18pt) WCAG AAA × Fail

Any Text WCAG AAA × Fail

Black Background



This preview shows how the Decimal color 12952746 looks on a black background.

Color Contrast Check

Large Text (above 18pt) WCAG AA ✓ Pass

Any Text WCAG AA ✓ Pass

Large Text (above 18pt) WCAG AAA ✓ Pass

Any Text WCAG AAA ✓ Pass

If you want to check with other color combinations, try the [Color Contrast Checker](#).

Decimal 12952746 Background



This preview shows how black text looks on a background with the Decimal color 12952746.



This preview shows how white text looks on a background with the Decimal color 12952746.

Color Blindness Simulation

Color vision deficiency is a very complex topic, and I could not describe the different causes any better than Wikipedia does, so if you want to learn more, you should check out their [article about color blindness](#).

Dichromacy



Original Color
12952746

Protanopia
11512750

Deuteranopia
12494761



Tritanopia
13018032

Trichromacy



Original Color
12952746

Protanomaly
12036269

Deuteranomaly
12691113

Tritanomaly
13018030

Monochromacy



Original Color
12952746

Achromatopsia
11513775

Achromatomaly
12037037

CSS Examples

Text

The CSS property to change the color of the text to Decimal 12952746 is called "color". The color property can be set on classes, ids or directly on the HTML element.

This example shows how text in the color #C5A4AA looks like.

```
.text, #text, p{  
    color:#C5A4AA  
}
```

If you want to add a text shadow in that color use the text-shadow property, you can generate a text shadow directly with our [CSS Text Shadow Generator](#).

Here you see how black text with a 4 pixel #C5A4AA colored shadow looks like.

```
.shadow{ text-shadow: 4px 4px 2px #C5A4AA
}
```

Border

The CSS property to change the border of an element to Decimal 12952746 is called "border". The border property can be set on classes, ids or directly on the HTML element.

This example shows the color as border, it can be applied via the CSS property "border" or "border-color".

```
.border, #border, table{ border:4px solid
#C5A4AA }
```

If only the border color should be changed use the property `border-color`.

```
.border{ border-color:#C5A4AA }
```

If you want to add a box shadow in that color use:

Here you see how a box with a 4 pixel #C5A4AA colored shadow looks like.

```
.boxshadow{ -moz-box-shadow:4px 4px 4px  
4px #C5A4AA; -webkit-box-shadow:4px 4px  
4px 4px #C5A4AA; box-shadow:4px 4px 4px  
4px #C5A4AA }
```

Background

The CSS property to change the background color of an element to Decimal 12952746 is called "background". The background property can be set on classes, ids or directly on the HTML element.

```
.background, #background, body{  
background:#C5A4AA }
```

If only the background color should be changed can be used:

```
.background{ background-color:#C5A4AA }
```

This example shows the color as background, it is applied via the CSS property "background".

To optimize and compress your CSS code, you can use our [online CSS compressor and optimizer](#) based on csstidy. If you want to create a linear or radial gradient as background or border, check our [CSS Gradient Generator](#).

Hey! You found this booklet interesting? Support Converting Colors with the new Membership Option!

The pro membership hides all ads, plus gives you double the colors in the color bucket, and more awesome pro features!

[Learn more, Memberships starting at \\$2.50/m!](#)

**Follow me
on Twitter!**

@ConvertingColor