

Converting Colors

Decimal(12953750)

Have a look what the booklet for
Decimal(12953750) contains.

Decimal(12953750)	3
<i>Conversions</i>	4
<i>Details</i>	6
<i>Harmonies</i>	11
<i>Previews</i>	23
<i>Color Blindness Simulation</i>	26
<i>CSS Examples</i>	29

Color

Decimal(12953750)

Conversions

Conversions Part 1

Format	Color
Hex	C5A896
RGB	197, 168, 150
RGB Percent	77%, 66%, 59%
CMY	0.2275, 0.3412, 0.4118
CMYK	0.00, 0.15, 0.24, 0.23
HSL	23°, 29%, 68%
HSV	23°, 24%, 77%
XYZ	42.5336, 42.0776, 34.7342
YIQ	174.6190, 23.0620, 0.5500

Conversions

Conversions Part 2

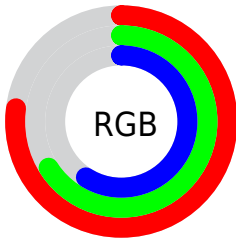
Format	Color
RYB	197, 179, 150
Decimal	12953750
CIELab	70.92, 7.77, 13.21
CIELCh	71, 15.329, 59.543
Yxy	42.0776, 0.3564, 0.3526
Android (android.graphics.Color)	4291143830 (0xFFC5A896)
YUV	174.6190, -12.1372, 19.6281
Hunter-Lab	64.8672, 3.5252, 13.6593

Details

The Decimal color **12953750** is a light color, and the websafe version is hex **CC9999**. A complement of this color would be **9876421**, and the grayscale version is **11513775**.

A 20% lighter version of the original color is **16703436**, and **9401443** is the 20% darker color. If you saturate the color by 10%, you get **12950658**, and if you desaturate by 10%, it is **12956842**.

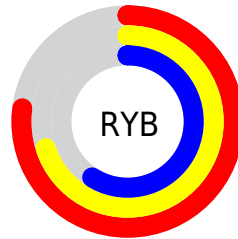
Distribution



Red (77%)

Green (66%)

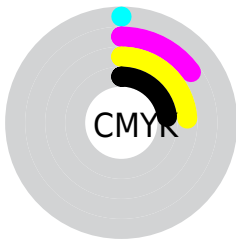
Blue (59%)



Red (77%)

Yellow (70%)

Blue (59%)

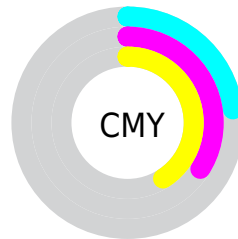


Cyan (0%)

Magenta (15%)

Yellow (24%)

Black (23%)



Cyan (23%)

Magenta (34%)

Yellow (41%)

Brightness & Saturation Gradients

These gradients show how the Decimal color 12953750 changes by changing the brightness by 10 percent. The first figure shows a shift by +10% for each color and the second figure -10%.

Similar to the brightness gradients but the following saturation gradients show a change of the Decimal color 12953750 by changing the saturation by 10% instead.

 12953750

 12953750

16777215

 11112060

 16703436

 9401443

 16776424

 7691083

 5981237

 4402719

 2889992

 1376256

 0

 12953750

 12953750

 12950658

 12956842

 12947567

 12959933

 12944475

 12963025

 12941127

 12966373

 12938036

 12969465

 12934944

 12972543

 12931852

 12975615

 12929792

 12976127

Harmonies

Analogous

The Analogous color harmony consists of three colors that are next to each other on the color wheel.



13346208



12953750



12168338

Triad

The Triadic color harmony groups three colors that are evenly spaced from another and form a triangle on the color wheel.



12953750



9352877



11578054

Complementary

The Complementary color scheme is a pair of colors which are on the opposite of each other on the color wheel.



12953750



9876421

Split Complementary

Split-complementary colors differ from the complementary color scheme. The scheme consists of three colors, the original color and two neighbors of the complement color.



10399689



12953750



9024955

Square

The Square scheme is like the rectangle color scheme, but the four colors are evenly spaced on the color wheel.



12953750



10138783



9417669



12625596

Rectangle

The Rectangle color scheme consists of four colors that form a rectangle on the color wheel.



12953750



11514003



9417669



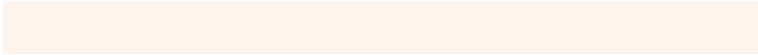
11185352

Sweetspot

The Sweet Spot groups the original color and five complimentary colors.



12953750



16774381



12949172



8419701



0



8421504

Same Dimension

The Same Dimension uses a secret algorithm to generate beautiful new colors.



12953750



16765365



12959638



6511962



10698496



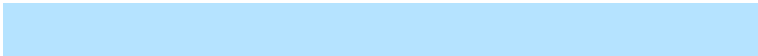
2362880

Inverse Universe

The Inverse Universe completely reimagines the original color for something new.



9876421



11920383



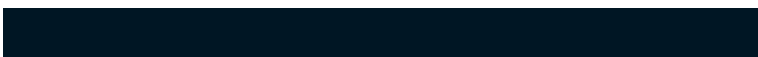
9870533



5922915



26019



5668

Previews

White Background



This preview shows how the Decimal color 12953750 looks on a white background.

Color Contrast Check

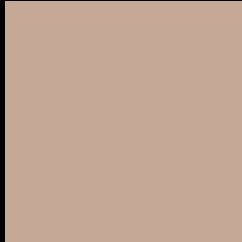
Large Text (above 18pt) WCAG AA × Fail

Any Text WCAG AA × Fail

Large Text (above 18pt) WCAG AAA × Fail

Any Text WCAG AAA × Fail

Black Background



This preview shows how the Decimal color 12953750 looks on a black background.

Color Contrast Check

Large Text (above 18pt) WCAG AA ✓ Pass

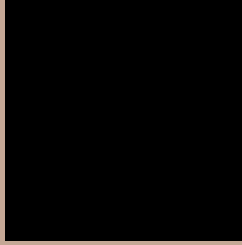
Any Text WCAG AA ✓ Pass

Large Text (above 18pt) WCAG AAA ✓ Pass

Any Text WCAG AAA ✓ Pass

If you want to check with other color combinations, try the [Color Contrast Checker](#).

Decimal 12953750 Background



This preview shows how black text looks on a background with the Decimal color 12953750.



This preview shows how white text looks on a background with the Decimal color 12953750.

Color Blindness Simulation

Color vision deficiency is a very complex topic, and I could not describe the different causes any better than Wikipedia does, so if you want to learn more, you should check out their [article about color blindness](#).


Dichromacy



Original Color
12953750

Protanopia
11971993

Deuteranopia
13084566



Tritanopia
13149361

Trichromacy



Original Color
12953750

Protanomaly
12299160

Deuteranomaly
13019030

Tritanomaly
13084071

Monochromacy



Original Color
12953750

Achromatopsia
11513775

Achromatomaly
12037286

CSS Examples

Text

The CSS property to change the color of the text to Decimal 12953750 is called "color". The color property can be set on classes, ids or directly on the HTML element.

This example shows how text in the color #C5A896 looks like.

```
.text, #text, p{  
    color:#C5A896  
}
```

If you want to add a text shadow in that color use the text-shadow property, you can generate a text shadow directly with our [CSS Text Shadow Generator](#).

Here you see how black text with a 4 pixel #C5A896 colored shadow looks like.

```
.shadow{ text-shadow: 4px 4px 2px #C5A896
}
```

Border

The CSS property to change the border of an element to Decimal 12953750 is called "border". The border property can be set on classes, ids or directly on the HTML element.

This example shows the color as border, it can be applied via the CSS property "border" or "border-color".

```
.border, #border, table{ border:4px solid
#C5A896 }
```

If only the border color should be changed use the property `border-color`.

```
.border{ border-color:#C5A896 }
```

If you want to add a box shadow in that color use:

Here you see how a box with a 4 pixel #C5A896 colored shadow looks like.

```
.boxshadow{ -moz-box-shadow:4px 4px 4px  
4px #C5A896; -webkit-box-shadow:4px 4px  
4px 4px #C5A896; box-shadow:4px 4px 4px  
4px #C5A896 }
```

Background

The CSS property to change the background color of an element to Decimal 12953750 is called "background". The background property can be set on classes, ids or directly on the HTML element.

```
.background, #background, body{  
background:#C5A896 }
```

If only the background color should be changed can be used:

```
.background{ background-color:#C5A896 }
```

This example shows the color as background, it is applied via the CSS property "background".

To optimize and compress your CSS code, you can use our [online CSS compressor and optimizer](#) based on csstidy. If you want to create a linear or radial gradient as background or border, check our [CSS Gradient Generator](#).

Hey! You found this booklet interesting? Support Converting Colors with the new Membership Option!

The pro membership hides all ads, plus gives you double the colors in the color bucket, and more awesome pro features!

[Learn more, Memberships starting at \\$2.50/m!](#)

**Follow me
on Twitter!**

@ConvertingColor