

Converting Colors

Decimal(12955053)

Have a look what the booklet for
Decimal(12955053) contains.

Decimal(12955053)	3
<i>Conversions</i>	4
<i>Details</i>	6
<i>Harmonies</i>	11
<i>Previews</i>	23
<i>Color Blindness Simulation</i>	26
<i>CSS Examples</i>	29

Color

Decimal(12955053)

Conversions

Conversions Part 1

Format	Color
Hex	C5ADAD
RGB	197, 173, 173
RGB Percent	77%, 68%, 68%
CMY	0.2275, 0.3216, 0.3216
CMYK	0.00, 0.12, 0.12, 0.23
HSL	0°, 17%, 73%
HSV	0°, 12%, 77%
XYZ	45.5124, 44.7746, 45.7788
YIQ	180.1760, 14.3040, 5.0880

Conversions

Conversions Part 2

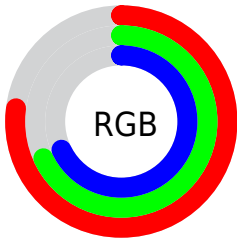
Format	Color
RYB	197, 173, 173
Decimal	12955053
CIELab	72.74, 8.66, 3.18
CIElCh	73, 9.222, 20.145
Yxy	44.7746, 0.3345, 0.3291
Android (android.graphics.Color)	4291145133 (0xFFC5ADAD)
YUV	180.1760, -3.5378, 14.7546
Hunter-Lab	66.9138, 4.3101, 6.2767

Details

The Decimal color **12955053** is a light color, and the websafe version is hex **CC9999**. A complement of this color would be **11388357**, and the grayscale version is **11842740**.

A 20% lighter version of the original color is **16704740**, and **9402745** is the 20% darker color. If you saturate the color by 10%, you get **12949913**, and if you desaturate by 10%, it is **12960193**.

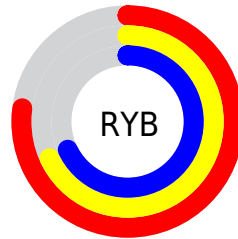
Distribution



Red (77%)

Green (68%)

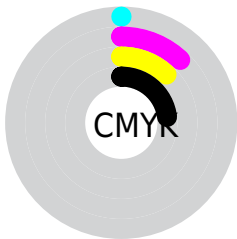
Blue (68%)



Red (77%)

Yellow (68%)

Blue (68%)

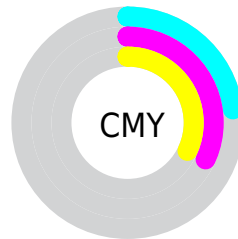


Cyan (0%)

Magenta (12%)

Yellow (12%)

Black (23%)



Cyan (23%)

Magenta (32%)

Yellow (32%)

Brightness & Saturation Gradients


These gradients show how the Decimal color 12955053 changes by changing the brightness by 10 percent. The first figure shows a shift by +10% for each color and the second figure -10%.

Similar to the brightness gradients but the following saturation gradients show a change of the Decimal color 12955053 by changing the saturation by 10% instead.

 12955053

 12955053

16777215

 11178642

 16704740

 9402745

 7692384

 6047816

 4534834

 3021853

 1770243

 0

 12955053

 12955053

 12949913

 12960193

 12945030

 12965076

 12939890

 12970216

 12934750

 12975356

 12929867

 12976127

 12924727

 12919587

 12914447

 12910592

Harmonies

Analogous

The Analogous color harmony consists of three colors that are next to each other on the color wheel.



12758454



12955053



12824230

Triad

The Triadic color harmony groups three colors that are evenly spaced from another and form a triangle on the color wheel.



12955053



11187879



10990787

Complementary

The Complementary color scheme is a pair of colors which are on the opposite of each other on the color wheel.



12955053



11388357

Split Complementary

Split-complementary colors differ from the complementary color scheme. The scheme consists of three colors, the original color and two neighbors of the complement color.



10532543



12955053



10663855

Square

The Square scheme is like the rectangle color scheme, but the four colors are evenly spaced on the color wheel.



12955053



11777187



10401976



11645378

Rectangle

The Rectangle color scheme consists of four colors that form a rectangle on the color wheel.



12955053



12562595



10401976



10794434

Sweetspot

The Sweet Spot groups the original color and five complimentary colors.



12955053



16774645



12955077



8419705



0



8421504

Same Dimension

The Same Dimension uses a secret algorithm to generate beautiful new colors.



12955053



16767449



12958125



6511194



10682368



2359296

Inverse Universe

The Inverse Universe completely reimagines the original color for something new.



11388357



14286847



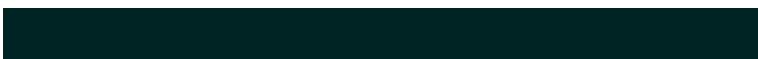
11385285



5923683



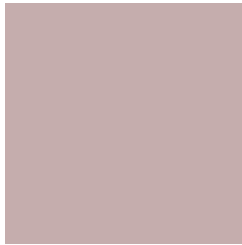
41891



9252

Previews

White Background



This preview shows how the Decimal color 12955053 looks on a white background.

Color Contrast Check

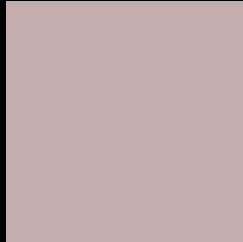
Large Text (above 18pt) WCAG AA × Fail

Any Text WCAG AA × Fail

Large Text (above 18pt) WCAG AAA × Fail

Any Text WCAG AAA × Fail

Black Background



This preview shows how the Decimal color 12955053 looks on a black background.

Color Contrast Check

Large Text (above 18pt) WCAG AA ✓ Pass

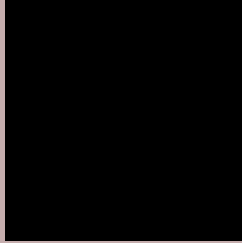
Any Text WCAG AA ✓ Pass

Large Text (above 18pt) WCAG AAA ✓ Pass

Any Text WCAG AAA ✓ Pass

If you want to check with other color combinations, try the [Color Contrast Checker](#).

Decimal 12955053 Background



This preview shows how black text looks on a background with the Decimal color 12955053.



This preview shows how white text looks on a background with the Decimal color 12955053.

Color Blindness Simulation

Color vision deficiency is a very complex topic, and I could not describe the different causes any better than Wikipedia does, so if you want to learn more, you should check out their [article about color blindness](#).

Dichromacy



Original Color
12955053

Protanopia
11973296

Deuteranopia
13020589



Tritanopia
13085625

Trichromacy



Original Color
12955053

Protanomaly
12300463

Deuteranomaly
13020589

Tritanomaly
13020341

Monochromacy



Original Color
12955053

Achromatopsia
11842740

Achromatomaly
12235185

CSS Examples

Text

The CSS property to change the color of the text to Decimal 12955053 is called "color". The color property can be set on classes, ids or directly on the HTML element.

This example shows how text in the color #C5ADAD looks like.

```
.text, #text, p{  
    color:#C5ADAD  
}
```

If you want to add a text shadow in that color use the text-shadow property, you can generate a text shadow directly with our [CSS Text Shadow Generator](#).

Here you see how black text with a 4 pixel #C5ADAD colored shadow looks like.

```
.shadow{ text-shadow: 4px 4px 2px #C5ADAD
}
```

Border

The CSS property to change the border of an element to Decimal 12955053 is called "border". The border property can be set on classes, ids or directly on the HTML element.

This example shows the color as border, it can be applied via the CSS property "border" or "border-color".

```
.border, #border, table{ border:4px solid
#C5ADAD }
```

If only the border color should be changed use the property `border-color`.

```
.border{ border-color:#C5ADAD }
```

If you want to add a box shadow in that color use:

Here you see how a box with a 4 pixel #C5ADAD colored shadow looks like.

```
.boxshadow{ -moz-box-shadow:4px 4px 4px  
4px #C5ADAD; -webkit-box-shadow:4px 4px  
4px 4px #C5ADAD; box-shadow:4px 4px 4px  
4px #C5ADAD }
```

Background

The CSS property to change the background color of an element to Decimal 12955053 is called "background". The background property can be set on classes, ids or directly on the HTML element.

```
.background, #background, body{  
background:#C5ADAD }
```

If only the background color should be changed can be used:

```
.background{ background-color:#C5ADAD }
```

This example shows the color as background, it is applied via the CSS property "background".

To optimize and compress your CSS code, you can use our [online CSS compressor and optimizer](#) based on csstidy. If you want to create a linear or radial gradient as background or border, check our [CSS Gradient Generator](#).

Hey! You found this booklet interesting? Support Converting Colors with the new Membership Option!

The pro membership hides all ads, plus gives you double the colors in the color bucket, and more awesome pro features!

[Learn more, Memberships starting at \\$2.50/m!](#)

**Follow me
on Twitter!**

@ConvertingColor