

Converting Colors

Decimal(12955828)

Have a look what the booklet for
Decimal(12955828) contains.

Decimal(12955828)	3
<i>Conversions</i>	4
<i>Details</i>	6
<i>Harmonies</i>	11
<i>Previews</i>	23
<i>Color Blindness Simulation</i>	26
<i>CSS Examples</i>	29

Color

Decimal(12955828)

Conversions

Conversions Part 1

Format	Color
Hex	C5B0B4
RGB	197, 176, 180
RGB Percent	77%, 69%, 71%
CMY	0.2275, 0.3098, 0.2941
CMYK	0.00, 0.11, 0.09, 0.23
HSL	349°, 15%, 73%
HSV	349°, 11%, 77%
XYZ	46.7895, 46.2163, 49.6346
YIQ	182.7350, 11.2320, 5.6960

Conversions

Conversions Part 2

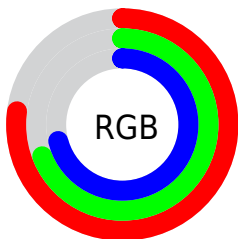
Format	Color
RYB	197, 176, 180
Decimal	12955828
CIELab	73.69, 8.22, 0.71
CIELCh	74, 8.251, 4.916
Yxy	46.2163, 0.3280, 0.3240
Android (android.graphics.Color)	4291145908 (0xFFC5B0B4)
YUV	182.7350, -1.3484, 12.5104
Hunter-Lab	67.9826, 3.8845, 4.2997

Details

The Decimal color **12955828** is a light color, and the websafe version is hex **CCCCCC**. A complement of this color would be **11584961**, and the grayscale version is **12040119**.

A 20% lighter version of the original color is **16705772**, and **9403263** is the 20% darker color. If you saturate the color by 10%, you get **12950692**, and if you desaturate by 10%, it is **12960964**.

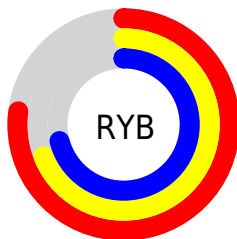
Distribution



Red (77%)

Green (69%)

Blue (71%)



Red (77%)

Yellow (69%)

Blue (71%)

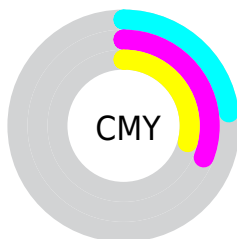


Cyan (0%)

Magenta (11%)

Yellow (9%)

Black (23%)



Cyan (23%)

Magenta (31%)

Yellow (29%)

Brightness & Saturation Gradients

These gradients show how the Decimal color 12955828 changes by changing the brightness by 10 percent. The first figure shows a shift by +10% for each color and the second figure -10%.

Similar to the brightness gradients but the following saturation gradients show a change of the Decimal color 12955828 by changing the saturation by 10% instead.

■ 12955828

16777215

■ 16705772

■ 12955828

■ 11179417

■ 9403263

■ 7693158

■ 6114126

■ 4535352

■ 3022626

■ 1771276

■ 0

■ 12955828

■ 12955828

 12950692

 12960964

 12945812

 12965844

 12940676

 12970980

 12935540

 12976116

 12930660

 12976127

 12925524

 12920388

 12915252

 12910630

Harmonies

Analogous

The Analogous color harmony consists of three colors that are next to each other on the color wheel.



12628412



12955828



12956077

Triad

The Triadic color harmony groups three colors that are evenly spaced from another and form a triangle on the color wheel.



12955828



11646889



10991810

Complementary

The Complementary color scheme is a pair of colors which are on the opposite of each other on the color wheel.



12955828



11584961

Split Complementary

Split-complementary colors differ from the complementary color scheme. The scheme consists of three colors, the original color and two neighbors of the complement color.



10729917



12955828



11123118

Square

The Square scheme is like the rectangle color scheme, but the four colors are evenly spaced on the color wheel.



12955828



12236198



10795702



11515332

Rectangle

The Rectangle color scheme consists of four colors that form a rectangle on the color wheel.



12955828



12825257



10795702



10860737

Sweetspot

The Sweet Spot groups the original color and five complimentary colors.



12955828



16775161



12693701



8419963



0



8421504

Same Dimension

The Same Dimension uses a secret algorithm to generate beautiful new colors.



12955828



16768740



12957360



6511195



10682399



2359303

Inverse Universe

The Inverse Universe completely reimagines the original color for something new.



12955828



16768740



11583429



6511195



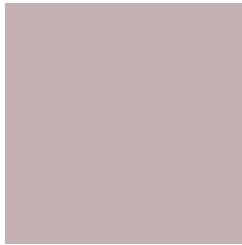
10682399



2359303

Previews

White Background



This preview shows how the Decimal color 12955828 looks on a white background.

Color Contrast Check

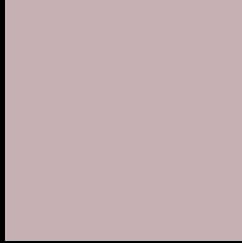
Large Text (above 18pt) WCAG AA × Fail

Any Text WCAG AA × Fail

Large Text (above 18pt) WCAG AAA × Fail

Any Text WCAG AAA × Fail

Black Background



This preview shows how the Decimal color 12955828 looks on a black background.

Color Contrast Check

Large Text (above 18pt) WCAG AA ✓ Pass

Any Text WCAG AA ✓ Pass

Large Text (above 18pt) WCAG AAA ✓ Pass

Any Text WCAG AAA ✓ Pass

If you want to check with other color combinations, try the [Color Contrast Checker](#).

Decimal 12955828 Background



This preview shows how black text looks on a background with the Decimal color 12955828.



This preview shows how white text looks on a background with the Decimal color 12955828.

Color Blindness Simulation

Color vision deficiency is a very complex topic, and I could not describe the different causes any better than Wikipedia does, so if you want to learn more, you should check out their [article about color blindness](#).

Dichromacy



Original Color
12955828

Protanopia
12104886

Deuteranopia
13086644



Tritanopia
13021116

Trichromacy



Original Color
12955828

Protanomaly
12432309

Deuteranomaly
13021108

Tritanomaly
13021113

Monochromacy



Original Color
12955828

Achromatopsia
12040119

Achromatomaly
12367030

CSS Examples

Text

The CSS property to change the color of the text to Decimal 12955828 is called "color". The color property can be set on classes, ids or directly on the HTML element.

This example shows how text in the color #C5B0B4 looks like.

```
.text, #text, p{  
    color:#C5B0B4  
}
```

If you want to add a text shadow in that color use the text-shadow property, you can generate a text shadow directly with our [CSS Text Shadow Generator](#).

Here you see how black text with a 4 pixel #C5B0B4 colored shadow looks like.

```
.shadow{ text-shadow: 4px 4px 2px #C5B0B4
}
```

Border

The CSS property to change the border of an element to Decimal 12955828 is called "border". The border property can be set on classes, ids or directly on the HTML element.

This example shows the color as border, it can be applied via the CSS property "border" or "border-color".

```
.border, #border, table{ border:4px solid
#C5B0B4 }
```

If only the border color should be changed use the property `border-color`.

```
.border{ border-color:#C5B0B4 }
```

If you want to add a box shadow in that color use:

Here you see how a box with a 4 pixel #C5B0B4 colored shadow looks like.

```
.boxshadow{ -moz-box-shadow:4px 4px 4px  
4px #C5B0B4; -webkit-box-shadow:4px 4px  
4px 4px #C5B0B4; box-shadow:4px 4px 4px  
4px #C5B0B4 }
```

Background

The CSS property to change the background color of an element to Decimal 12955828 is called "background". The background property can be set on classes, ids or directly on the HTML element.

```
.background, #background, body{  
background:#C5B0B4 }
```

If only the background color should be changed can be used:

```
.background{ background-color:#C5B0B4 }
```

This example shows the color as background, it is applied via the CSS property "background".

To optimize and compress your CSS code, you can use our [online CSS compressor and optimizer](#) based on csstidy. If you want to create a linear or radial gradient as background or border, check our [CSS Gradient Generator](#).

Hey! You found this booklet interesting? Support Converting Colors with the new Membership Option!

The pro membership hides all ads, plus gives you double the colors in the color bucket, and more awesome pro features!

[Learn more, Memberships starting at \\$2.50/m!](#)

**Follow me
on Twitter!**

@ConvertingColor