

Converting Colors

Decimal(12956852)

Have a look what the booklet for
Decimal(12956852) contains.

Decimal(12956852)	3
<i>Conversions</i>	4
<i>Details</i>	6
<i>Harmonies</i>	11
<i>Previews</i>	23
<i>Color Blindness Simulation</i>	26
<i>CSS Examples</i>	29

Color

Decimal(12956852)

Conversions

Conversions Part 1

Format	Color
Hex	C5B4B4
RGB	197, 180, 180
RGB Percent	77%, 71%, 71%
CMY	0.2275, 0.2941, 0.2941
CMYK	0.00, 0.09, 0.09, 0.23
HSL	0°, 13%, 74%
HSV	0°, 9%, 77%
XYZ	47.5854, 47.8081, 49.8999
YIQ	185.0830, 10.1320, 3.6040

Conversions

Conversions Part 2

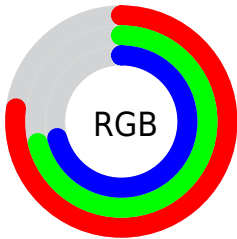
Format	Color
RYB	197, 180, 180
Decimal	12956852
CIELab	74.70, 6.06, 2.19
CIELCh	75, 6.441, 19.863
Yxy	47.8081, 0.3275, 0.3290
Android (android.graphics.Color)	4291146932 (0xFFC5B4B4)
YUV	185.0830, -2.5059, 10.4512
Hunter-Lab	69.1434, 1.8451, 5.6116

Details

The Decimal color **12956852** is a light color, and the websafe version is hex **CCCCCC**. A complement of this color would be **11847109**, and the grayscale version is **12171705**.

A 20% lighter version of the original color is **16706796**, and **9404287** is the 20% darker color. If you saturate the color by 10%, you get **12951712**, and if you desaturate by 10%, it is **12961992**.

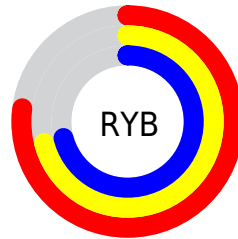
Distribution



Red (77%)

Green (71%)

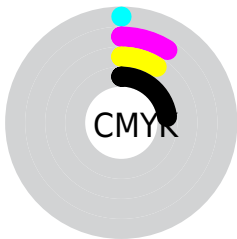
Blue (71%)



Red (77%)

Yellow (71%)

Blue (71%)

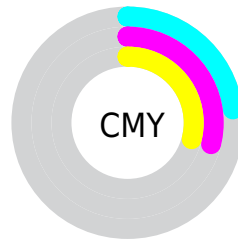


Cyan (0%)

Magenta (9%)

Yellow (9%)

Black (23%)



Cyan (23%)

Magenta (29%)

Yellow (29%)

Brightness & Saturation Gradients

These gradients show how the Decimal color 12956852 changes by changing the brightness by 10 percent. The first figure shows a shift by +10% for each color and the second figure -10%.

Similar to the brightness gradients but the following saturation gradients show a change of the Decimal color 12956852 by changing the saturation by 10% instead.

■ 12956852

■ 12956852

16777215

■ 11180441

■ 16706796

■ 9404287

■ 7693926

■ 6114894

■ 4536120

■ 3088930

■ 1772556

■ 0

■ 12956852

■ 12956852

 12951712

 12961992

 12946829

 12966875

 12941689

 12972015

 12936549

 12976127

 12931666

 12926526

 12921386

 12916246

 12911363

Harmonies

Analogous

The Analogous color harmony consists of three colors that are next to each other on the color wheel.



12825786



12956852



12891567

Triad

The Triadic color harmony groups three colors that are evenly spaced from another and form a triangle on the color wheel.



12956852



11713200



11581891

Complementary

The Complementary color scheme is a pair of colors which are on the opposite of each other on the color wheel.



12956852



11847109

Split Complementary

Split-complementary colors differ from the complementary color scheme. The scheme consists of three colors, the original color and two neighbors of the complement color.



11254721



12956852



11320245

Square

The Square scheme is like the rectangle color scheme, but the four colors are evenly spaced on the color wheel.



12956852



12171693



11189180



12040131

Rectangle

The Rectangle color scheme consists of four colors that form a rectangle on the color wheel.



12956852



12695213



11189180



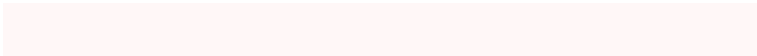
11451075

Sweetspot

The Sweet Spot groups the original color and five complimentary colors.



12956852



16775159



12956869



8419962



0



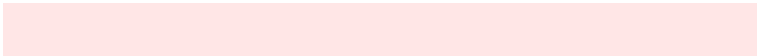
8421504

Same Dimension

The Same Dimension uses a secret algorithm to generate beautiful new colors.



12956852



16770790



12959156



6511194



10682368



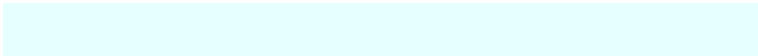
2359296

Inverse Universe

The Inverse Universe completely reimagines the original color for something new.



11847109



15138815



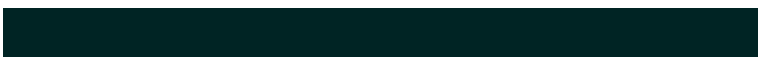
11845061



5923683



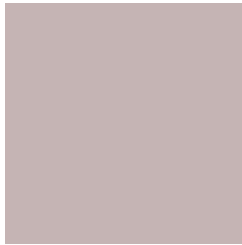
41891



9252

Previews

White Background



This preview shows how the Decimal color 12956852 looks on a white background.

Color Contrast Check

Large Text (above 18pt) WCAG AA × Fail

Any Text WCAG AA × Fail

Large Text (above 18pt) WCAG AAA × Fail

Any Text WCAG AAA × Fail

Black Background



This preview shows how the Decimal color 12956852 looks on a black background.

Color Contrast Check

Large Text (above 18pt) WCAG AA ✓ Pass

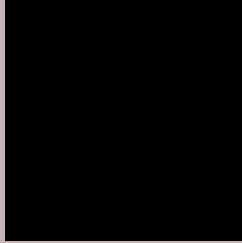
Any Text WCAG AA ✓ Pass

Large Text (above 18pt) WCAG AAA ✓ Pass

Any Text WCAG AAA ✓ Pass

If you want to check with other color combinations, try the [Color Contrast Checker](#).

Decimal 12956852 Background



This preview shows how black text looks on a background with the Decimal color 12956852.



This preview shows how white text looks on a background with the Decimal color 12956852.

Color Blindness Simulation

Color vision deficiency is a very complex topic, and I could not describe the different causes any better than Wikipedia does, so if you want to learn more, you should check out their [article about color blindness](#).

Dichromacy



Original Color
12956852

Protanopia
12367798

Deuteranopia
13349556



Tritanopia
13087424

Trichromacy



Original Color
12956852

Protanomaly
12564149

Deuteranomaly
13218740

Tritanomaly
13022140

Monochromacy



Original Color
12956852

Achromatopsia
12171705

Achromatomaly
12433335

CSS Examples

Text

The CSS property to change the color of the text to Decimal 12956852 is called "color". The color property can be set on classes, ids or directly on the HTML element.

This example shows how text in the color #C5B4B4 looks like.

```
.text, #text, p{  
    color:#C5B4B4  
}
```

If you want to add a text shadow in that color use the text-shadow property, you can generate a text shadow directly with our [CSS Text Shadow Generator](#).

Here you see how black text with a 4 pixel #C5B4B4 colored shadow looks like.

```
.shadow{ text-shadow: 4px 4px 2px #C5B4B4
}
```

Border

The CSS property to change the border of an element to Decimal 12956852 is called "border". The border property can be set on classes, ids or directly on the HTML element.

This example shows the color as border, it can be applied via the CSS property "border" or "border-color".

```
.border, #border, table{ border:4px solid
#C5B4B4 }
```

If only the border color should be changed use the property `border-color`.

```
.border{ border-color:#C5B4B4 }
```

If you want to add a box shadow in that color use:

Here you see how a box with a 4 pixel #C5B4B4 colored shadow looks like.

```
.boxshadow{ -moz-box-shadow:4px 4px 4px  
4px #C5B4B4; -webkit-box-shadow:4px 4px  
4px 4px #C5B4B4; box-shadow:4px 4px 4px  
4px #C5B4B4 }
```

Background

The CSS property to change the background color of an element to Decimal 12956852 is called "background". The background property can be set on classes, ids or directly on the HTML element.

```
.background, #background, body{  
background:#C5B4B4 }
```

If only the background color should be changed can be used:

```
.background{ background-color:#C5B4B4 }
```

This example shows the color as background, it is applied via the CSS property "background".

To optimize and compress your CSS code, you can use our [online CSS compressor and optimizer](#) based on csstidy. If you want to create a linear or radial gradient as background or border, check our [CSS Gradient Generator](#).

Hey! You found this booklet interesting? Support Converting Colors with the new Membership Option!

The pro membership hides all ads, plus gives you double the colors in the color bucket, and more awesome pro features!

[Learn more, Memberships starting at \\$2.50/m!](#)

**Follow me
on Twitter!**

@ConvertingColor