

# Converting Colors

Decimal(12958650)

Have a look what the booklet for  
Decimal(12958650) contains.

<b>Decimal(12958650)</b> .....	3
<i><b>Conversions</b></i> .....	4
<i><b>Details</b></i> .....	6
<i><b>Harmonies</b></i> .....	11
<i><b>Previews</b></i> .....	23
<i><b>Color Blindness Simulation</b></i> .....	26
<i><b>CSS Examples</b></i> .....	29

# **Color**

**Decimal(12958650)**

# Conversions

## Conversions Part 1

Format	Color
Hex	C5BBBA
RGB	197, 187, 186
RGB Percent	77%, 73%, 73%
CMY	0.2275, 0.2667, 0.2706
CMYK	0.00, 0.05, 0.06, 0.23
HSL	5°, 9%, 75%
HSV	5°, 6%, 77%
XYZ	49.6592, 50.9561, 53.6726
YIQ	189.8760, 6.2810, 1.8090

# Conversions

## Conversions Part 2

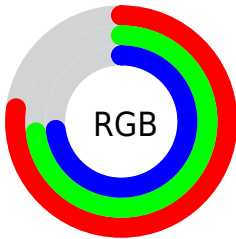
Format	Color
<a href="#">RYB</a>	<a href="#">197, 187, 186</a>
Decimal	<a href="#">12958650</a>
CIELab	<a href="#">76.65, 3.34, 1.76</a>
CIELCh	<a href="#">77, 3.777, 27.708</a>
Yxy	<a href="#">50.9561, 0.3219, 0.3303</a>
Android (android.graphics.Color)	<a href="#">4291148730 (0xFFC5BBBA)</a>
YUV	<a href="#">189.8760, -1.9109, 6.2477</a>
Hunter-Lab	<a href="#">71.3836, -0.7446, 5.3890</a>

# Details

The Decimal color **12958650** is a light color, and the websafe version is hex **CCCCCC**. A complement of this color would be **12240069**, and the grayscale version is **12500670**.

A 20% lighter version of the original color is **16708594**, and **9406085** is the 20% darker color. If you saturate the color by 10%, you get **12954022**, and if you desaturate by 10%, it is **12963278**.

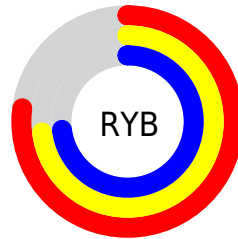
# Distribution



Red (77%)

Green (73%)

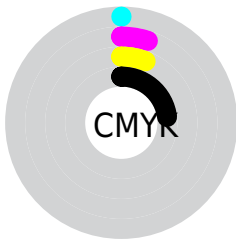
Blue (73%)



Red (77%)

Yellow (73%)

Blue (73%)

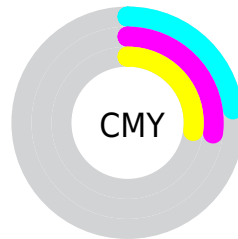


Cyan (0%)

Magenta (5%)

Yellow (6%)

Black (23%)



Cyan (23%)

Magenta (27%)

Yellow (27%)

# Brightness & Saturation Gradients

These gradients show how the Decimal color 12958650 changes by changing the brightness by 10 percent. The first figure shows a shift by +10% for each color and the second figure -10%.

Similar to the brightness gradients but the following saturation gradients show a change of the Decimal color 12958650 by changing the saturation by 10% instead.



■ 12958650

■ 12958650

16777215

■ 11182239

■ 16708594

■ 9406085

■ 7761260

■ 6116436

■ 4537660

■ 3090215

■ 1708818

■ 0

■ 12958650

■ 12958650

 12954022

 12963278

 12949395

 12967905

 12944767

 12972533

 12940139

 12976127

 12935512

 12931140

 12926512

 12921884

 12917257

# Harmonies

## Analogous

The Analogous color harmony consists of three colors that are next to each other on the color wheel.



12893118



12958650



12893367

# Triad

The Triadic color harmony groups three colors that are evenly spaced from another and form a triangle on the color wheel.



12958650



12173241



12172740

# Complementary

The Complementary color scheme is a pair of colors which are on the opposite of each other on the color wheel.



12958650



12240069

# Split Complementary

Split-complementary colors differ from the complementary color scheme. The scheme consists of three colors, the original color and two neighbors of the complement color.



11976643



12958650



11976637

# Square

The Square scheme is like the rectangle color scheme, but the four colors are evenly spaced on the color wheel.



12958650



12435127



11911104



12500163

# Rectangle

The Rectangle color scheme consists of four colors that form a rectangle on the color wheel.



12958650



12762294



11911104



12107460

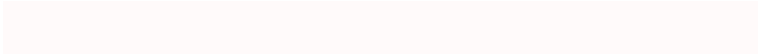


# Sweetspot

The Sweet Spot groups the original color and five complimentary colors.



12958650



16775930



12958404



8420733



0



8421504

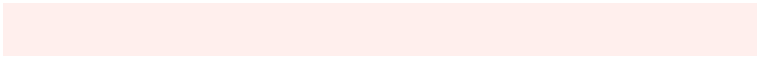


# Same Dimension

The Same Dimension uses a secret algorithm to generate beautiful new colors.



12958650



16773101



12959930



6511707



10686208



2360064

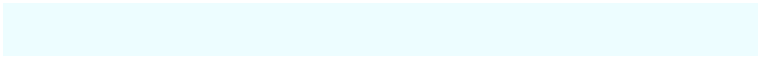


# Inverse Universe

The Inverse Universe completely reimagines the original color for something new.



12240069



15597055



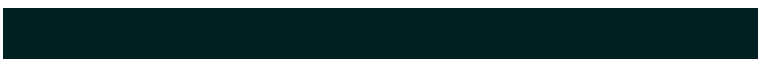
12238789



5989219



38051

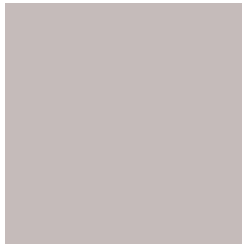


8228



# Previews

## White Background



This preview shows how the Decimal color 12958650 looks on a white background.

## Color Contrast Check

Large Text (above 18pt) WCAG AA × Fail

Any Text WCAG AA × Fail

Large Text (above 18pt) WCAG AAA × Fail

Any Text WCAG AAA × Fail

# Black Background



This preview shows how the Decimal color 12958650 looks on a black background.

## Color Contrast Check

Large Text (above 18pt) WCAG AA ✓ Pass

Any Text WCAG AA ✓ Pass

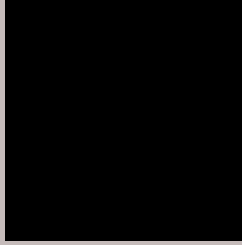
Large Text (above 18pt) WCAG AAA ✓ Pass

Any Text WCAG AAA ✓ Pass

If you want to check with other color combinations, try the [Color Contrast Checker](#).



## Decimal 12958650 Background



This preview shows how black text looks on a background with the Decimal color 12958650.



This preview shows how white text looks on a background with the Decimal color 12958650.

# Color Blindness Simulation

Color vision deficiency is a very complex topic, and I could not describe the different causes any better than Wikipedia does, so if you want to learn more, you should check out their [article about color blindness](#).

## Dichromacy



**Original Color**  
12958650

**Protanopia**  
12696763

**Deuteranopia**  
13678523



**Tritanopia**  
13089223

# Trichromacy



**Original Color**  
12958650

**Protanomaly**  
12762299

**Deuteranomaly**  
13416635

**Tritanomaly**  
13023938

# Monochromacy



**Original Color**  
12958650

**Achromatopsia**  
12500670

**Achromatomaly**  
12697021

# CSS Examples

## Text

The CSS property to change the color of the text to Decimal 12958650 is called "color". The color property can be set on classes, ids or directly on the HTML element.

This example shows how text in the color #C5BBBA looks like.

```
.text, #text, p{  
    color:#C5BBBA  
}
```

If you want to add a text shadow in that color use the text-shadow property, you can generate a text shadow directly with our [CSS Text Shadow Generator](#).

Here you see how black text with a 4 pixel #C5BBBA colored shadow looks like.

```
.shadow{ text-shadow: 4px 4px 2px #C5BBBA
}
```

## Border

The CSS property to change the border of an element to Decimal 12958650 is called "border". The border property can be set on classes, ids or directly on the HTML element.

This example shows the color as border, it can be applied via the CSS property "border" or "border-color".

```
.border, #border, table{ border:4px solid
#C5BBBA }
```

If only the border color should be changed use the property `border-color`.

```
.border{ border-color:#C5BBBA }
```

If you want to add a box shadow in that color use:

Here you see how a box with a 4 pixel #C5BBBA colored shadow looks like.

```
.boxshadow{ -moz-box-shadow:4px 4px 4px  
4px #C5BBBA; -webkit-box-shadow:4px 4px  
4px 4px #C5BBBA; box-shadow:4px 4px 4px  
4px #C5BBBA }
```

# Background

The CSS property to change the background color of an element to Decimal 12958650 is called "background". The background property can be set on classes, ids or directly on the HTML element.

```
.background, #background, body{  
background:#C5BBBA }
```

If only the background color should be changed can be used:

```
.background{ background-color:#C5BBBA }
```

This example shows the color as background, it is applied via the CSS property "background".

To optimize and compress your CSS code, you can use our [online CSS compressor and optimizer](#) based on csstidy. If you want to create a linear or radial gradient as background or border, check our [CSS Gradient Generator](#).



Hey! You found this booklet interesting? Support Converting Colors with the new Membership Option!

The pro membership hides all ads, plus gives you double the colors in the color bucket, and more awesome pro features!

**[Learn more, Memberships starting at \\$2.50/m!](#)**

**Follow me  
on Twitter!**

@ConvertingColor