

Converting Colors

Decimal(13007477)

Have a look what the booklet for
Decimal(13007477) contains.

Decimal(13007477)	3
<i>Conversions</i>	4
<i>Details</i>	6
<i>Harmonies</i>	11
<i>Previews</i>	23
<i>Color Blindness Simulation</i>	26
<i>CSS Examples</i>	29

Color

Decimal(13007477)

Conversions

Conversions Part 1

Format	Color
Hex	C67A75
RGB	198, 122, 117
RGB Percent	78%, 48%, 46%
CMY	0.2235, 0.5216, 0.5412
CMYK	0.00, 0.38, 0.41, 0.22
HSL	4°, 42%, 62%
HSV	4°, 41%, 78%
XYZ	33.4591, 27.2092, 20.3180
YIQ	144.1540, 46.9010, 14.5570

Conversions

Conversions Part 2

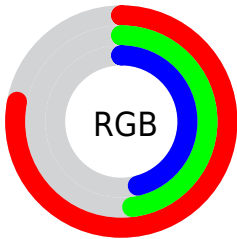
Format	Color
RYB	198, 122, 117
Decimal	13007477
CIELab	59.17, 29.05, 15.31
CIELCh	59, 32.834, 27.794
Yxy	27.2092, 0.4131, 0.3360
Android (android.graphics.Color)	4291197557 (0xFFC67A75)
YUV	144.1540, -13.3869, 47.2229
Hunter-Lab	52.1624, 23.2130, 13.4194

Details

The Decimal color **13007477** is a dark color, and the websafe version is hex **CC6666**. A complement of this color would be **7717318**, and the grayscale version is **9474192**.

A 20% lighter version of the original color is **16756649**, and **9259077** is the 20% darker color. If you saturate the color by 10%, you get **13002593**, and if you desaturate by 10%, it is **13012361**.

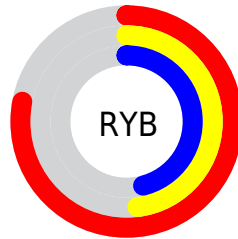
Distribution



Red (78%)

Green (48%)

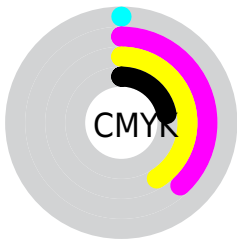
Blue (46%)



Red (78%)

Yellow (48%)

Blue (46%)

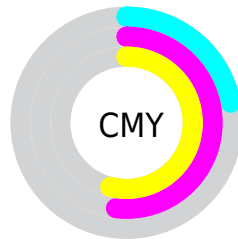


Cyan (0%)

Magenta (38%)

Yellow (41%)

Black (22%)



Cyan (22%)

Magenta (52%)

Yellow (54%)

Brightness & Saturation Gradients

These gradients show how the Decimal color 13007477 changes by changing the brightness by 10 percent. The first figure shows a shift by +10% for each color and the second figure -10%.

Similar to the brightness gradients but the following saturation gradients show a change of the Decimal color 13007477 by changing the saturation by 10% instead.

 13007477

 13007477

16777215

 11100508

 16756649

 9259077

 16763844

 7483439

 16771040

 5707802

16777213

 4063232

 2555905

 0

 13007477

 13007477

 13002593

 13012361

 12997965

 13016989

 12993082

 13021872

 12988454

 13026500

 12983570

 13031384

 12979200

 13036012

 13040895

 13041663

Harmonies

Analogous

The Analogous color harmony consists of three colors that are next to each other on the color wheel.



12875922



13007477



12223071

Triad

The Triadic color harmony groups three colors that are evenly spaced from another and form a triangle on the color wheel.



13007477



6593391



6394568

Complementary

The Complementary color scheme is a pair of colors which are on the opposite of each other on the color wheel.



13007477



7717318

Split Complementary

Split-complementary colors differ from the complementary color scheme. The scheme consists of three colors, the original color and two neighbors of the complement color.



2988478



13007477



4038283

Square

The Square scheme is like the rectangle color scheme, but the four colors are evenly spaced on the color wheel.



13007477



8820058



1416616



9406657

Rectangle

The Rectangle color scheme consists of four colors that form a rectangle on the color wheel.



13007477



11307350



1416616



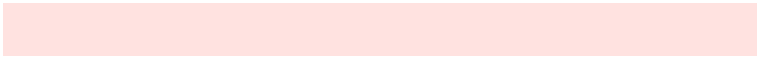
5281222

Sweetspot

The Sweet Spot groups the original color and five complimentary colors.



13007477



16769760



13006274



8417134



0



8421504

Same Dimension

The Same Dimension uses a secret algorithm to generate beautiful new colors.



13007477



16747138



13017717



6511194



10684928



2359808

Inverse Universe

The Inverse Universe completely reimagines the original color for something new.



7717318



8583167



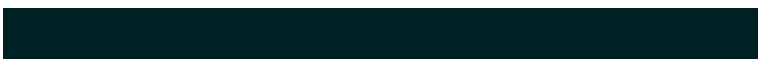
7707078



5923683



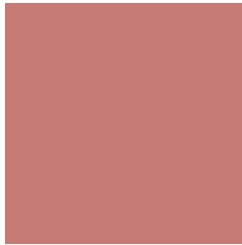
39331



8484

Previews

White Background



This preview shows how the Decimal color 13007477 looks on a white background.

Color Contrast Check

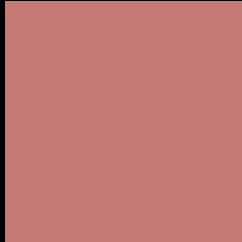
Large Text (above 18pt) WCAG AA ✓ Pass

Any Text WCAG AA × Fail

Large Text (above 18pt) WCAG AAA × Fail

Any Text WCAG AAA × Fail

Black Background



This preview shows how the Decimal color 13007477 looks on a black background.

Color Contrast Check

Large Text (above 18pt) WCAG AA ✓ Pass

Any Text WCAG AA ✓ Pass

Large Text (above 18pt) WCAG AAA ✓ Pass

Any Text WCAG AAA × Fail

If you want to check with other color combinations, try the [Color Contrast Checker](#).

Decimal 13007477 Background



This preview shows how black text looks on a background with the Decimal color 13007477.



This preview shows how white text looks on a background with the Decimal color 13007477.

Color Blindness Simulation

Color vision deficiency is a very complex topic, and I could not describe the different causes any better than Wikipedia does, so if you want to learn more, you should check out their [article about color blindness](#).

Dichromacy





Tritanopia
13072513

Trichromacy



Original Color
13007477

Protanomaly
10979195

Deuteranomaly
11699315

Tritanomaly
13072765

Monochromacy



Original Color
13007477

Achromatopsia
9474192

Achromatomaly
10782854

CSS Examples

Text

The CSS property to change the color of the text to Decimal 13007477 is called "color". The color property can be set on classes, ids or directly on the HTML element.

This example shows how text in the color #C67A75 looks like.

```
.text, #text, p{  
  color:#C67A75  
}
```

If you want to add a text shadow in that color use the text-shadow property, you can generate a text shadow directly with our [CSS Text Shadow Generator](#).

Here you see how black text with a 4 pixel #C67A75 colored shadow looks like.

```
.shadow{ text-shadow: 4px 4px 2px #C67A75
}
```

Border

The CSS property to change the border of an element to Decimal 13007477 is called "border". The border property can be set on classes, ids or directly on the HTML element.

This example shows the color as border, it can be applied via the CSS property "border" or "border-color".

```
.border, #border, table{ border:4px solid
#C67A75 }
```

If only the border color should be changed use the property `border-color`.

```
.border{ border-color:#C67A75 }
```

If you want to add a box shadow in that color use:

Here you see how a box with a 4 pixel #C67A75 colored shadow looks like.

```
.boxshadow{ -moz-box-shadow:4px 4px 4px  
4px #C67A75; -webkit-box-shadow:4px 4px  
4px 4px #C67A75; box-shadow:4px 4px 4px  
4px #C67A75 }
```

Background

The CSS property to change the background color of an element to Decimal 13007477 is called "background". The background property can be set on classes, ids or directly on the HTML element.

```
.background, #background, body{  
background:#C67A75 }
```

If only the background color should be changed can be used:

```
.background{ background-color:#C67A75 }
```

This example shows the color as background, it is applied via the CSS property "background".

To optimize and compress your CSS code, you can use our [online CSS compressor and optimizer](#) based on csstidy. If you want to create a linear or radial gradient as background or border, check our [CSS Gradient Generator](#).

Hey! You found this booklet interesting? Support Converting Colors with the new Membership Option!

The pro membership hides all ads, plus gives you double the colors in the color bucket, and more awesome pro features!

[Learn more, Memberships starting at \\$2.50/m!](#)

**Follow me
on Twitter!**

@ConvertingColor