

Converting Colors

Decimal(13013881)

Have a look what the booklet for
Decimal(13013881) contains.

Decimal(13013881)	3
<i>Conversions</i>	4
<i>Details</i>	6
<i>Harmonies</i>	11
<i>Previews</i>	23
<i>Color Blindness Simulation</i>	26
<i>CSS Examples</i>	29

Color

Decimal(13013881)

Conversions

Conversions Part 1

Format	Color
Hex	C69379
RGB	198, 147, 121
RGB Percent	78%, 58%, 47%
CMY	0.2235, 0.4235, 0.5255
CMYK	0.00, 0.26, 0.39, 0.22
HSL	20°, 40%, 63%
HSV	20°, 39%, 78%
XYZ	37.1736, 34.2537, 22.7415
YIQ	159.2850, 38.7420, 2.7260

Conversions

Conversions Part 2

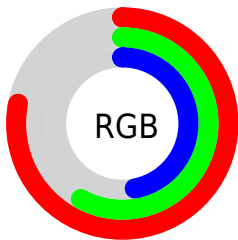
Format	Color
RYB	198, 160, 121
Decimal	13013881
CIELab	65.16, 15.81, 21.27
CIELCh	65, 26.505, 53.381
Yxy	34.2537, 0.3948, 0.3637
Android (android.graphics.Color)	4291203961 (0xFFC69379)
YUV	159.2850, -18.8745, 33.9531
Hunter-Lab	58.5266, 10.9539, 17.9305

Details

The Decimal color **13013881** is a light color, and the websafe version is hex **CC9966**. A complement of this color would be **7974086**, and the grayscale version is **10461087**.

A 20% lighter version of the original color is **16763309**, and **9330760** is the 20% darker color. If you saturate the color by 10%, you get **13010533**, and if you desaturate by 10%, it is **13017229**.

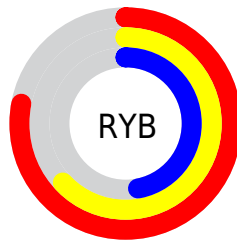
Distribution



Red (78%)

Green (58%)

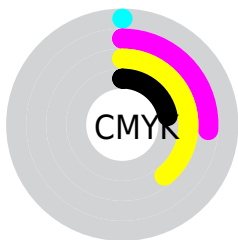
Blue (47%)



Red (78%)

Yellow (63%)

Blue (47%)

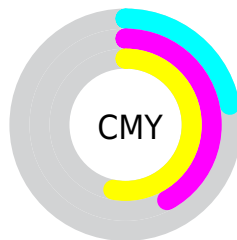


Cyan (0%)

Magenta (26%)

Yellow (39%)

Black (22%)



Cyan (22%)

Magenta (42%)

Yellow (53%)

Brightness & Saturation Gradients


These gradients show how the Decimal color 13013881 changes by changing the brightness by 10 percent. The first figure shows a shift by +10% for each color and the second figure -10%.

Similar to the brightness gradients but the following saturation gradients show a change of the Decimal color 13013881 by changing the saturation by 10% instead.

 13013881

 13013881

16777215

 11172192

 16763309

 9330760

 16770505

 7620657

 16777189

 5845532

 4201476

 2622976

 0

 13013881

 13013881

 13010533

 13017229

 13007185

 13020577

 13003838

 13023924

 13000490

 13027272

 12996886

 13030876

 12993538

 13034224

 12993280

 13037567

 13040895

 13041663

Harmonies

Analogous

The Analogous color harmony consists of three colors that are next to each other on the color wheel.



13536908



13013881



11836271

Triad

The Triadic color harmony groups three colors that are evenly spaced from another and form a triangle on the color wheel.



13013881



6728600



10197706

Complementary

The Complementary color scheme is a pair of colors which are on the opposite of each other on the color wheel.



13013881



7974086

Split Complementary

Split-complementary colors differ from the complementary color scheme. The scheme consists of three colors, the original color and two neighbors of the complement color.



7905997



13013881



5680048

Square

The Square scheme is like the rectangle color scheme, but the four colors are evenly spaced on the color wheel.



13013881



8497281



6072515



12096187

Rectangle

The Rectangle color scheme consists of four colors that form a rectangle on the color wheel.



13013881



10788976



6072515



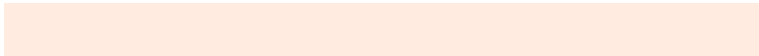
9412044

Sweetspot

The Sweet Spot groups the original color and five complimentary colors.



13013881



16772064



13007276



8418414



0



8421504

Same Dimension

The Same Dimension uses a secret algorithm to generate beautiful new colors.



13013881



16756871



13023609



6511962



10696448



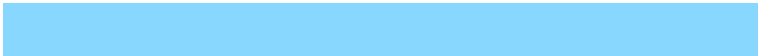
2362368

Inverse Universe

The Inverse Universe completely reimagines the original color for something new.



7974086



8902655



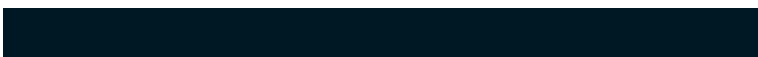
7964358



5922915



27811



6180

Previews

White Background



This preview shows how the Decimal color 13013881 looks on a white background.

Color Contrast Check

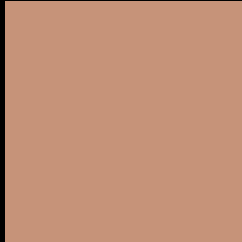
Large Text (above 18pt) WCAG AA × Fail

Any Text WCAG AA × Fail

Large Text (above 18pt) WCAG AAA × Fail

Any Text WCAG AAA × Fail

Black Background



This preview shows how the Decimal color 13013881 looks on a black background.

Color Contrast Check

Large Text (above 18pt) WCAG AA ✓ Pass

Any Text WCAG AA ✓ Pass

Large Text (above 18pt) WCAG AAA ✓ Pass

Any Text WCAG AAA ✓ Pass

If you want to check with other color combinations, try the [Color Contrast Checker](#).

Decimal 13013881 Background



This preview shows how black text looks on a background with the Decimal color 13013881.



This preview shows how white text looks on a background with the Decimal color 13013881.

Color Blindness Simulation

Color vision deficiency is a very complex topic, and I could not describe the different causes any better than Wikipedia does, so if you want to learn more, you should check out their [article about color blindness](#).


Dichromacy



Original Color
13013881

Protanopia
11050622

Deuteranopia
12228728



Tritanopia
13209241

Trichromacy



Original Color
13013881

Protanomaly
11770492

Deuteranomaly
12490360

Tritanomaly
13144205

Monochromacy



Original Color
13013881

Achromatopsia
10461087

Achromatomaly
11377553

CSS Examples

Text

The CSS property to change the color of the text to Decimal 13013881 is called "color". The color property can be set on classes, ids or directly on the HTML element.

This example shows how text in the color #C69379 looks like.

```
.text, #text, p{  
    color:#C69379  
}
```

If you want to add a text shadow in that color use the text-shadow property, you can generate a text shadow directly with our [CSS Text Shadow Generator](#).

Here you see how black text with a 4 pixel #C69379 colored shadow looks like.

```
.shadow{ text-shadow: 4px 4px 2px #C69379
}
```

Border

The CSS property to change the border of an element to Decimal 13013881 is called "border". The border property can be set on classes, ids or directly on the HTML element.

This example shows the color as border, it can be applied via the CSS property "border" or "border-color".

```
.border, #border, table{ border:4px solid
#C69379 }
```

If only the border color should be changed use the property `border-color`.

```
.border{ border-color:#C69379 }
```

If you want to add a box shadow in that color use:

Here you see how a box with a 4 pixel #C69379 colored shadow looks like.

```
.boxshadow{ -moz-box-shadow:4px 4px 4px  
4px #C69379; -webkit-box-shadow:4px 4px  
4px 4px #C69379; box-shadow:4px 4px 4px  
4px #C69379 }
```

Background

The CSS property to change the background color of an element to Decimal 13013881 is called "background". The background property can be set on classes, ids or directly on the HTML element.

```
.background, #background, body{  
background:#C69379 }
```

If only the background color should be changed can be used:

```
.background{ background-color:#C69379 }
```

This example shows the color as background, it is applied via the CSS property "background".

To optimize and compress your CSS code, you can use our [online CSS compressor and optimizer](#) based on csstidy. If you want to create a linear or radial gradient as background or border, check our [CSS Gradient Generator](#).

Hey! You found this booklet interesting? Support Converting Colors with the new Membership Option!

The pro membership hides all ads, plus gives you double the colors in the color bucket, and more awesome pro features!

[Learn more, Memberships starting at \\$2.50/m!](#)

**Follow me
on Twitter!**

@ConvertingColor