

Converting Colors

Decimal(13015433)

Have a look what the booklet for
Decimal(13015433) contains.

Decimal(13015433)	3
<i>Conversions</i>	4
<i>Details</i>	6
<i>Harmonies</i>	11
<i>Previews</i>	23
<i>Color Blindness Simulation</i>	26
<i>CSS Examples</i>	29

Color

Decimal(13015433)

Conversions

Conversions Part 1

Format	Color
Hex	C69989
RGB	198, 153, 137
RGB Percent	78%, 60%, 54%
CMY	0.2235, 0.4000, 0.4627
CMYK	0.00, 0.23, 0.31, 0.22
HSL	16°, 35%, 66%
HSV	16°, 31%, 78%
XYZ	39.1953, 36.5944, 28.6645
YIQ	164.6310, 31.9560, 4.5640

Conversions

Conversions Part 2

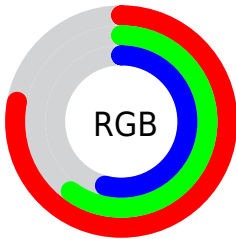
Format	Color
RYB	198, 159, 137
Decimal	13015433
CIELab	66.97, 14.53, 14.87
CIELCh	67, 20.792, 45.672
Yxy	36.5944, 0.3752, 0.3503
Android (android.graphics.Color)	4291205513 (0xFFC69989)
YUV	164.6310, -13.6221, 29.2646
Hunter-Lab	60.4933, 9.7919, 14.2510

Details

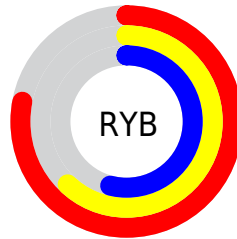
The Decimal color **13015433** is a light color, and the websafe version is hex **CC9999**. A complement of this color would be **9025222**, and the grayscale version is **10855845**.

A 20% lighter version of the original color is **16764862**, and **9397847** is the 20% darker color. If you saturate the color by 10%, you get **13011573**, and if you desaturate by 10%, it is **13019293**.

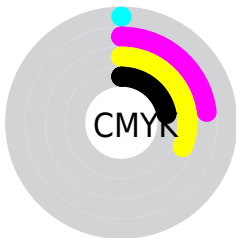
Distribution



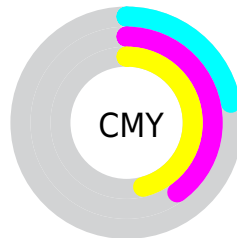
- Red (78%)
- Green (60%)
- Blue (54%)



- Red (78%)
- Yellow (62%)
- Blue (54%)



- Cyan (0%)
- Magenta (23%)
- Yellow (31%)
- Black (22%)



- Cyan (22%)
- Magenta (40%)
- Yellow (46%)

Brightness & Saturation Gradients


These gradients show how the Decimal color 13015433 changes by changing the brightness by 10 percent. The first figure shows a shift by +10% for each color and the second figure -10%.

Similar to the brightness gradients but the following saturation gradients show a change of the Decimal color 13015433 by changing the saturation by 10% instead.

 13015433

 13015433

16777215

 11173744

 16764862

 9397847

 16772314

 7622208

 16777207

 5977898

 4333845

 2821120

 262144

 0

 13015433

 13015433

 13011573

 13019293

 13007969

 13022897

 13004110

 13026756

 13000506

 13030360

 12996646

 13034220

 12992786

 13038079

 12989440

 13041663

Harmonies

Analogous

The Analogous color harmony consists of three colors that are next to each other on the color wheel.



13276826



13015433



12164991

Triad

The Triadic color harmony groups three colors that are evenly spaced from another and form a triangle on the color wheel.



13015433



8236441



10133959

Complementary

The Complementary color scheme is a pair of colors which are on the opposite of each other on the color wheel.



13015433



9025222

Split Complementary

Split-complementary colors differ from the complementary color scheme. The scheme consists of three colors, the original color and two neighbors of the complement color.



8562631



13015433



7384748

Square

The Square scheme is like the rectangle color scheme, but the four colors are evenly spaced on the color wheel.



13015433



9611912



7449789



11705277

Rectangle

The Rectangle color scheme consists of four colors that form a rectangle on the color wheel.



13015433



11445118



7449789



9610184

Sweetspot

The Sweet Spot groups the original color and five complimentary colors.



13015433



16772840



13011383



8418673



0



8421504

Same Dimension

The Same Dimension uses a secret algorithm to generate beautiful new colors.



13015433



16759201



13023113



6511706



10693376



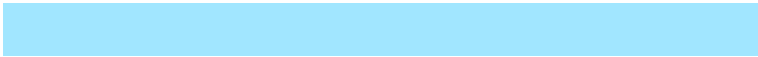
2361600

Inverse Universe

The Inverse Universe completely reimagines the original color for something new.



9025222



10610431



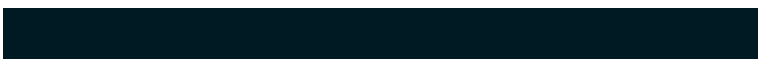
9017542



5923171



30883



6692

Previews

White Background



This preview shows how the Decimal color 13015433 looks on a white background.

Color Contrast Check

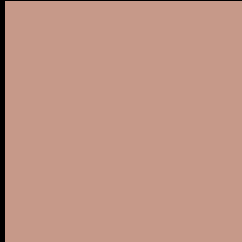
Large Text (above 18pt) WCAG AA × Fail

Any Text WCAG AA × Fail

Large Text (above 18pt) WCAG AAA × Fail

Any Text WCAG AAA × Fail

Black Background



This preview shows how the Decimal color 13015433 looks on a black background.

Color Contrast Check

Large Text (above 18pt) WCAG AA ✓ Pass

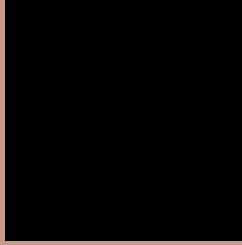
Any Text WCAG AA ✓ Pass

Large Text (above 18pt) WCAG AAA ✓ Pass

Any Text WCAG AAA ✓ Pass

If you want to check with other color combinations, try the [Color Contrast Checker](#).

Decimal 13015433 Background



This preview shows how black text looks on a background with the Decimal color 13015433.




This preview shows how white text looks on a background with the Decimal color 13015433.

Color Blindness Simulation

Color vision deficiency is a very complex topic, and I could not describe the different causes any better than Wikipedia does, so if you want to learn more, you should check out their [article about color blindness](#).

Dichromacy





Tritanopia
13211041

Trichromacy



Original Color
13015433

Protanomaly
11902860

Deuteranomaly
12622984

Tritanomaly
13145752

Monochromacy



Original Color
13015433

Achromatopsia
10855845

Achromatomaly
11641243

CSS Examples

Text

The CSS property to change the color of the text to Decimal 13015433 is called "color". The color property can be set on classes, ids or directly on the HTML element.

This example shows how text in the color #C69989 looks like.

```
.text, #text, p{  
    color:#C69989  
}
```

If you want to add a text shadow in that color use the text-shadow property, you can generate a text shadow directly with our [CSS Text Shadow Generator](#).

Here you see how black text with a 4 pixel #C69989 colored shadow looks like.

```
.shadow{ text-shadow: 4px 4px 2px #C69989
}
```

Border

The CSS property to change the border of an element to Decimal 13015433 is called "border". The border property can be set on classes, ids or directly on the HTML element.

This example shows the color as border, it can be applied via the CSS property "border" or "border-color".

```
.border, #border, table{ border:4px solid
#C69989 }
```

If only the border color should be changed use the property `border-color`.

```
.border{ border-color:#C69989 }
```

If you want to add a box shadow in that color use:

Here you see how a box with a 4 pixel #C69989 colored shadow looks like.

```
.boxshadow{ -moz-box-shadow:4px 4px 4px  
4px #C69989; -webkit-box-shadow:4px 4px  
4px 4px #C69989; box-shadow:4px 4px 4px  
4px #C69989 }
```

Background

The CSS property to change the background color of an element to Decimal 13015433 is called "background". The background property can be set on classes, ids or directly on the HTML element.

```
.background, #background, body{  
background:#C69989 }
```

If only the background color should be changed can be used:

```
.background{ background-color:#C69989 }
```

This example shows the color as background, it is applied via the CSS property "background".

To optimize and compress your CSS code, you can use our [online CSS compressor and optimizer](#) based on csstidy. If you want to create a linear or radial gradient as background or border, check our [CSS Gradient Generator](#).

Hey! You found this booklet interesting? Support Converting Colors with the new Membership Option!

The pro membership hides all ads, plus gives you double the colors in the color bucket, and more awesome pro features!

[Learn more, Memberships starting at \\$2.50/m!](#)

**Follow me
on Twitter!**

@ConvertingColor