

Converting Colors

Decimal(13015699)

Have a look what the booklet for
Decimal(13015699) contains.

Decimal(13015699)	3
<i>Conversions</i>	4
<i>Details</i>	6
<i>Harmonies</i>	11
<i>Previews</i>	23
<i>Color Blindness Simulation</i>	26
<i>CSS Examples</i>	29

Color

Decimal(13015699)

Conversions

Conversions Part 1

Format	Color
Hex	C69A93
RGB	198, 154, 147
RGB Percent	78%, 60%, 58%
CMY	0.2235, 0.3961, 0.4235
CMYK	0.00, 0.22, 0.26, 0.22
HSL	8°, 31%, 68%
HSV	8°, 26%, 78%
XYZ	40.1108, 37.2236, 32.6746
YIQ	166.3580, 28.4710, 7.1510

Conversions

Conversions Part 2

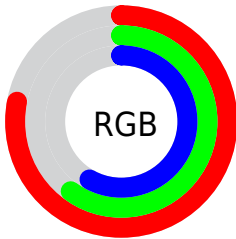
Format	Color
R _Y B	198, 155, 147
Decimal	13015699
CIE Lab	67.44, 15.37, 9.97
CIE LCh	67, 18.317, 32.977
Yxy	37.2236, 0.3646, 0.3384
Android (android.graphics.Color)	4291205779 (0xFFC69A93)
YUV	166.3580, -9.5435, 27.7500
Hunter-Lab	61.0111, 10.5825, 10.9550

Details

The Decimal color **13015699** is a light color, and the websafe version is hex **CC9999**. A complement of this color would be **9682886**, and the grayscale version is **10921638**.

A 20% lighter version of the original color is **16765385**, and **9398112** is the 20% darker color. If you saturate the color by 10%, you get **13011327**, and if you desaturate by 10%, it is **13020071**.

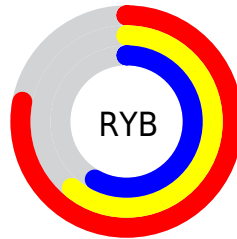
Distribution



Red (78%)

Green (60%)

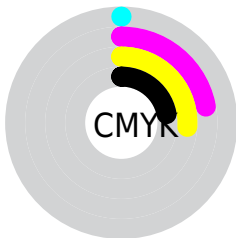
Blue (58%)



Red (78%)

Yellow (61%)

Blue (58%)

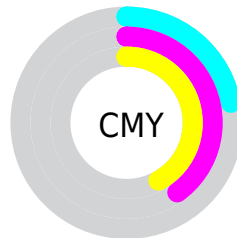


Cyan (0%)

Magenta (22%)

Yellow (26%)

Black (22%)



Cyan (22%)

Magenta (40%)

Yellow (42%)

Brightness & Saturation Gradients

These gradients show how the Decimal color 13015699 changes by changing the brightness by 10 percent. The first figure shows a shift by +10% for each color and the second figure -10%.

Similar to the brightness gradients but the following saturation gradients show a change of the Decimal color 13015699 by changing the saturation by 10% instead.

 13015699

 13015699

16777215

 11174009

 16765385

 9398112

 16772581

 7688009

 5977906

 4399645

 2886916

 720896

 0

 13015699

 13015699

 13011327

 13020071

 13006955

 13024443

 13002584

 13028814

 12998212

 13033186

 12993840

 13037558

 12989468

 13041663

 12984840

 12983040

Harmonies

Analogous

The Analogous color harmony consists of three colors that are next to each other on the color wheel.



12949923



13015699



12492423

Triad

The Triadic color harmony groups three colors that are evenly spaced from another and form a triangle on the color wheel.



13015699



9153685



9741765

Complementary

The Complementary color scheme is a pair of colors which are on the opposite of each other on the color wheel.



13015699



9682886

Split Complementary

Split-complementary colors differ from the complementary color scheme. The scheme consists of three colors, the original color and two neighbors of the complement color.



8432321



13015699



8171173

Square

The Square scheme is like the rectangle color scheme, but the four colors are evenly spaced on the color wheel.



13015699



10332552



7908790



11116480

Rectangle

The Rectangle color scheme consists of four colors that form a rectangle on the color wheel.



13015699



11903620



7908790



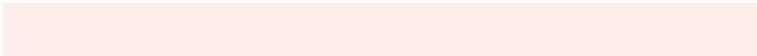
9217989

Sweetspot

The Sweet Spot groups the original color and five complimentary colors.



13015699



16772587



13013951



8418675



0



8421504

Same Dimension

The Same Dimension uses a secret algorithm to generate beautiful new colors.



13015699



16759728



13022099



6511450



10688000



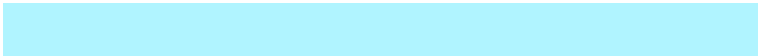
2360576

Inverse Universe

The Inverse Universe completely reimagines the original color for something new.



9682886



11597055



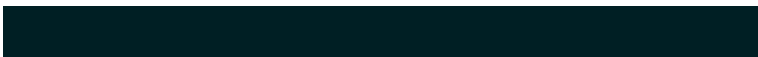
9676486



5923427



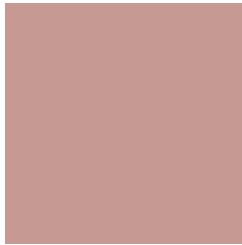
36259



7972

Previews

White Background



This preview shows how the Decimal color 13015699 looks on a white background.

Color Contrast Check

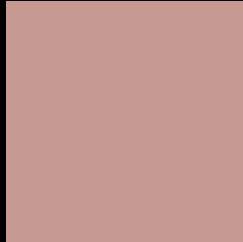
Large Text (above 18pt) WCAG AA × Fail

Any Text WCAG AA × Fail

Large Text (above 18pt) WCAG AAA × Fail

Any Text WCAG AAA × Fail

Black Background



This preview shows how the Decimal color 13015699 looks on a black background.

Color Contrast Check

Large Text (above 18pt) WCAG AA ✓ Pass

Any Text WCAG AA ✓ Pass

Large Text (above 18pt) WCAG AAA ✓ Pass

Any Text WCAG AAA ✓ Pass

If you want to check with other color combinations, try the [Color Contrast Checker](#).

Decimal 13015699 Background



This preview shows how black text looks on a background with the Decimal color 13015699.



This preview shows how white text looks on a background with the Decimal color 13015699.

Color Blindness Simulation

Color vision deficiency is a very complex topic, and I could not describe the different causes any better than Wikipedia does, so if you want to learn more, you should check out their [article about color blindness](#).


Dichromacy



Original Color
13015699

Protanopia
11183256

Deuteranopia
12296082



Tritanopia
13146275

Trichromacy



Original Color
13015699

Protanomaly
11837590

Deuteranomaly
12557714

Tritanomaly
13080989

Monochromacy



Original Color
13015699

Achromatopsia
10921638

Achromatomaly
11707039

CSS Examples

Text

The CSS property to change the color of the text to Decimal 13015699 is called "color". The color property can be set on classes, ids or directly on the HTML element.

This example shows how text in the color #C69A93 looks like.

```
.text, #text, p{  
    color:#C69A93  
}
```

If you want to add a text shadow in that color use the text-shadow property, you can generate a text shadow directly with our [CSS Text Shadow Generator](#).

Here you see how black text with a 4 pixel #C69A93 colored shadow looks like.

```
.shadow{ text-shadow: 4px 4px 2px #C69A93
}
```

Border

The CSS property to change the border of an element to Decimal 13015699 is called "border". The border property can be set on classes, ids or directly on the HTML element.

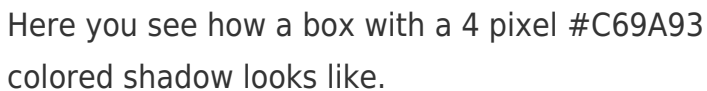
This example shows the color as border, it can be applied via the CSS property "border" or "border-color".

```
.border, #border, table{ border:4px solid
#C69A93 }
```

If only the border color should be changed use the property `border-color`.

```
.border{ border-color:#C69A93 }
```

If you want to add a box shadow in that color use:



Here you see how a box with a 4 pixel #C69A93 colored shadow looks like.

```
.boxshadow{ -moz-box-shadow:4px 4px 4px  
4px #C69A93; -webkit-box-shadow:4px 4px  
4px 4px #C69A93; box-shadow:4px 4px 4px  
4px #C69A93 }
```

Background

The CSS property to change the background color of an element to Decimal 13015699 is called "background". The background property can be set on classes, ids or directly on the HTML element.

```
.background, #background, body{  
background:#C69A93 }
```

If only the background color should be changed can be used:

```
.background{ background-color:#C69A93 }
```

This example shows the color as background, it is applied via the CSS property "background".

To optimize and compress your CSS code, you can use our [online CSS compressor and optimizer](#) based on csstidy. If you want to create a linear or radial gradient as background or border, check our [CSS Gradient Generator](#).

Hey! You found this booklet interesting? Support Converting Colors with the new Membership Option!

The pro membership hides all ads, plus gives you double the colors in the color bucket, and more awesome pro features!

[Learn more, Memberships starting at \\$2.50/m!](#)

**Follow me
on Twitter!**

@ConvertingColor