

Converting Colors

Decimal(13018757)

Have a look what the booklet for
Decimal(13018757) contains.

Decimal(13018757)	3
<i>Conversions</i>	4
<i>Details</i>	6
<i>Harmonies</i>	11
<i>Previews</i>	23
<i>Color Blindness Simulation</i>	26
<i>CSS Examples</i>	29

Color

Decimal(13018757)

Conversions

Conversions Part 1

Format	Color
Hex	C6A685
RGB	198, 166, 133
RGB Percent	78%, 65%, 52%
CMY	0.2235, 0.3490, 0.4784
CMYK	0.00, 0.16, 0.33, 0.22
HSL	30°, 36%, 65%
HSV	30°, 33%, 78%
XYZ	41.1586, 40.9717, 27.9293
YIQ	171.8060, 29.6650, -3.4790

Conversions

Conversions Part 2

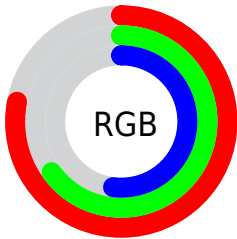
Format	Color
RYB	196, 198, 133
Decimal	13018757
CIELab	70.16, 6.92, 21.47
CIELCh	70, 22.555, 72.146
Yxy	40.9717, 0.3740, 0.3723
Android (android.graphics.Color)	4291208837 (0xFFC6A685)
YUV	171.8060, -19.1314, 22.9721
Hunter-Lab	64.0091, 2.7615, 18.9361

Details

The Decimal color **13018757** is a light color, and the websafe version is hex **CC9966**. A complement of this color would be **8758726**, and the grayscale version is **11316396**.

A 20% lighter version of the original color is **16768442**, and **9400915** is the 20% darker color. If you saturate the color by 10%, you get **13016177**, and if you desaturate by 10%, it is **13021337**.

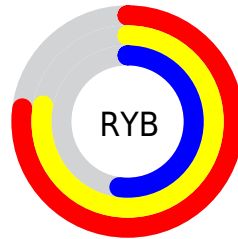
Distribution



Red (78%)

Green (65%)

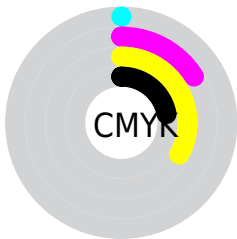
Blue (52%)



Red (77%)

Yellow (78%)

Blue (52%)

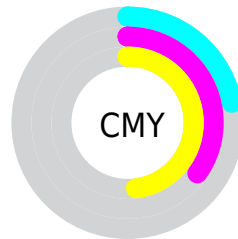


Cyan (0%)

Magenta (16%)

Yellow (33%)

Black (22%)



Cyan (22%)

Magenta (35%)

Yellow (48%)

Brightness & Saturation Gradients

These gradients show how the Decimal color 13018757 changes by changing the brightness by 10 percent. The first figure shows a shift by +10% for each color and the second figure -10%.

Similar to the brightness gradients but the following saturation gradients show a change of the Decimal color 13018757 by changing the saturation by 10% instead.

 13018757

 13018757

16777215

 11177068

 16768442

 9400915

 16775894


 7690812

 16777203

 5980710

 4336657

 2824192

 1114112

 0

 13018757

 13018757

 13016177

 13021337

 13013853

 13023661

 13011274

 13026240

 13008694

 13028820

 13006114

 13031400

 13003790

 13033724

 13001984

 13036287

 13038847

 13041407

Harmonies

Analogous

The Analogous color harmony consists of three colors that are next to each other on the color wheel.



13869201



13018757



11709827

Triad

The Triadic color harmony groups three colors that are evenly spaced from another and form a triangle on the color wheel.



13018757



7649203



12166090

Complementary

The Complementary color scheme is a pair of colors which are on the opposite of each other on the color wheel.



13018757



8758726

Split Complementary

Split-complementary colors differ from the complementary color scheme. The scheme consists of three colors, the original color and two neighbors of the complement color.



10398675



13018757



7583174

Square

The Square scheme is like the rectangle color scheme, but the four colors are evenly spaced on the color wheel.



13018757



8763038



8696274



13475513

Rectangle

The Rectangle color scheme consists of four colors that form a rectangle on the color wheel.



13018757



10727816



8696274



11642574

Sweetspot

The Sweet Spot groups the original color and five complimentary colors.



13018757



16773862



13010342



8419440



0



8421504

Same Dimension

The Same Dimension uses a secret algorithm to generate beautiful new colors.



13018757



16764572



13026949



6512474



10703616



2363904

Inverse Universe

The Inverse Universe completely reimagines the original color for something new.



8758726



10276351



8750534



5922403



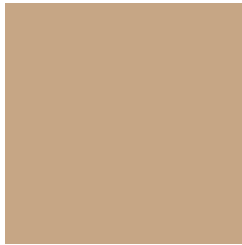
20643



4644

Previews

White Background



This preview shows how the Decimal color 13018757 looks on a white background.

Color Contrast Check

Large Text (above 18pt) WCAG AA × Fail

Any Text WCAG AA × Fail

Large Text (above 18pt) WCAG AAA × Fail

Any Text WCAG AAA × Fail

Black Background



This preview shows how the Decimal color 13018757 looks on a black background.

Color Contrast Check

Large Text (above 18pt) WCAG AA ✓ Pass

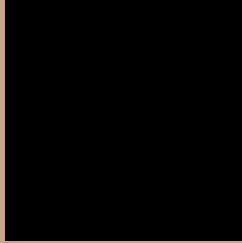
Any Text WCAG AA ✓ Pass

Large Text (above 18pt) WCAG AAA ✓ Pass

Any Text WCAG AAA ✓ Pass

If you want to check with other color combinations, try the [Color Contrast Checker](#).

Decimal 13018757 Background



This preview shows how black text looks on a background with the Decimal color 13018757.



This preview shows how white text looks on a background with the Decimal color 13018757.

Color Blindness Simulation

Color vision deficiency is a very complex topic, and I could not describe the different causes any better than Wikipedia does, so if you want to learn more, you should check out their [article about color blindness](#).


Dichromacy



Original Color
13018757

Protanopia
12036999

Deuteranopia
13215109

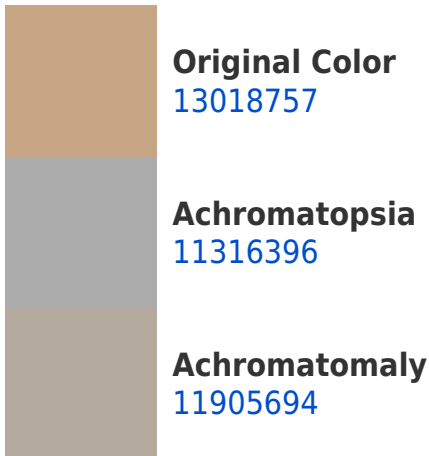


Tritanopia
13279661

Trichromacy



Monochromacy



CSS Examples

Text

The CSS property to change the color of the text to Decimal 13018757 is called "color". The color property can be set on classes, ids or directly on the HTML element.

This example shows how text in the color #C6A685 looks like.

```
.text, #text, p{  
    color:#C6A685  
}
```

If you want to add a text shadow in that color use the text-shadow property, you can generate a text shadow directly with our [CSS Text Shadow Generator](#).

Here you see how black text with a 4 pixel #C6A685 colored shadow looks like.

```
.shadow{ text-shadow: 4px 4px 2px #C6A685
}
```

Border

The CSS property to change the border of an element to Decimal 13018757 is called "border". The border property can be set on classes, ids or directly on the HTML element.

This example shows the color as border, it can be applied via the CSS property "border" or "border-color".

```
.border, #border, table{ border:4px solid
#C6A685 }
```

If only the border color should be changed use the property `border-color`.

```
.border{ border-color:#C6A685 }
```

If you want to add a box shadow in that color use:

Here you see how a box with a 4 pixel #C6A685 colored shadow looks like.

```
.boxshadow{ -moz-box-shadow:4px 4px 4px  
4px #C6A685; -webkit-box-shadow:4px 4px  
4px 4px #C6A685; box-shadow:4px 4px 4px  
4px #C6A685 }
```

Background

The CSS property to change the background color of an element to Decimal 13018757 is called "background". The background property can be set on classes, ids or directly on the HTML element.

```
.background, #background, body{  
background:#C6A685 }
```

If only the background color should be changed can be used:

```
.background{ background-color:#C6A685 }
```

This example shows the color as background, it is applied via the CSS property "background".

To optimize and compress your CSS code, you can use our [online CSS compressor and optimizer](#) based on csstidy. If you want to create a linear or radial gradient as background or border, check our [CSS Gradient Generator](#).

Hey! You found this booklet interesting? Support Converting Colors with the new Membership Option!

The pro membership hides all ads, plus gives you double the colors in the color bucket, and more awesome pro features!

[Learn more, Memberships starting at \\$2.50/m!](#)

**Follow me
on Twitter!**

@ConvertingColor