

Converting Colors

Decimal(13019013)

Have a look what the booklet for
Decimal(13019013) contains.

Decimal(13019013)	3
<i>Conversions</i>	4
<i>Details</i>	6
<i>Harmonies</i>	11
<i>Previews</i>	23
<i>Color Blindness Simulation</i>	26
<i>CSS Examples</i>	29

Color

Decimal(13019013)

Conversions

Conversions Part 1

Format	Color
Hex	C6A785
RGB	198, 167, 133
RGB Percent	78%, 65%, 52%
CMY	0.2235, 0.3451, 0.4784
CMYK	0.00, 0.16, 0.33, 0.22
HSL	31°, 36%, 65%
HSV	31°, 33%, 78%
XYZ	41.3411, 41.3367, 27.9902
YIQ	172.3930, 29.3900, -4.0020

Conversions

Conversions Part 2

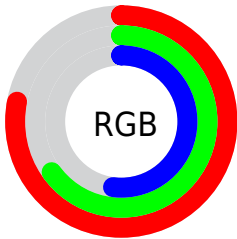
Format	Color
RYB	192, 198, 133
Decimal	13019013
CIELab	70.41, 6.37, 21.82
CIElCh	70, 22.729, 73.714
Yxy	41.3367, 0.3736, 0.3735
Android (android.graphics.Color)	4291209093 (0xFFC6A785)
YUV	172.3930, -19.4207, 22.4573
Hunter-Lab	64.2936, 2.2625, 19.1937

Details

The Decimal color **13019013** is a light color, and the websafe version is hex **CC9966**. A complement of this color would be **8758470**, and the grayscale version is **11382189**.

A 20% lighter version of the original color is **16768698**, and **9401171** is the 20% darker color. If you saturate the color by 10%, you get **13016689**, and if you desaturate by 10%, it is **13021337**.

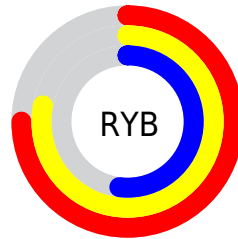
Distribution



Red (78%)

Green (65%)

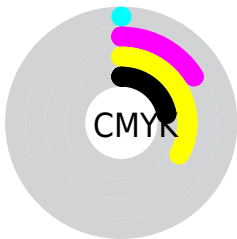
Blue (52%)



Red (75%)

Yellow (78%)

Blue (52%)

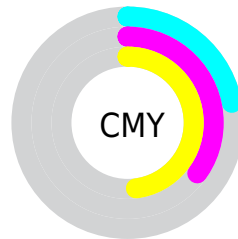


Cyan (0%)

Magenta (16%)

Yellow (33%)

Black (22%)



Cyan (22%)

Magenta (35%)

Yellow (48%)

Brightness & Saturation Gradients


These gradients show how the Decimal color 13019013 changes by changing the brightness by 10 percent. The first figure shows a shift by +10% for each color and the second figure -10%.

Similar to the brightness gradients but the following saturation gradients show a change of the Decimal color 13019013 by changing the saturation by 10% instead.

 13019013

 13019013

16777215

 11177324

 16768698

 9401171

 16776150

 7691068

 16777203

 5980966

 4336913

 2824192

 1114112

 0

 13019013

 13019013

 13016689

 13021337

 13014109

 13023917

 13011786

 13026240

 13009206

 13028820

 13006882

 13031144

 13004302

 13033724

 13002752

 13036031

 13038591

 13040895

Harmonies

Analogous

The Analogous color harmony consists of three colors that are next to each other on the color wheel.



13869457



13019013



11710084

Triad

The Triadic color harmony groups three colors that are evenly spaced from another and form a triangle on the color wheel.



13019013



7649461



12297418

Complementary

The Complementary color scheme is a pair of colors which are on the opposite of each other on the color wheel.



13019013



8758470

Split Complementary

Split-complementary colors differ from the complementary color scheme. The scheme consists of three colors, the original color and two neighbors of the complement color.



10595284



13019013



7648968

Square

The Square scheme is like the rectangle color scheme, but the four colors are evenly spaced on the color wheel.



13019013



8697760



8761811



13541304

Rectangle

The Rectangle color scheme consists of four colors that form a rectangle on the color wheel.



13019013



10662537



8761811



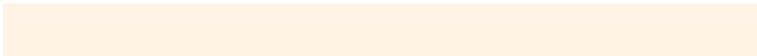
11773647

Sweetspot

The Sweet Spot groups the original color and five complimentary colors.



13019013



16774118



13010340



8419440



0



8421504

Same Dimension

The Same Dimension uses a secret algorithm to generate beautiful new colors.



13019013



16765084



12961413



6512474



10704128



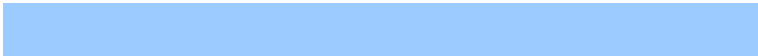
2364160

Inverse Universe

The Inverse Universe completely reimagines the original color for something new.



8758470



10275839



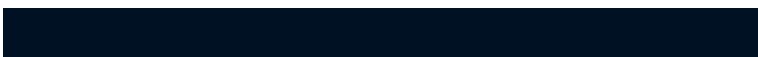
8816070



5922403



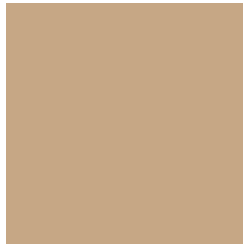
20131



4388

Previews

White Background



This preview shows how the Decimal color 13019013 looks on a white background.

Color Contrast Check

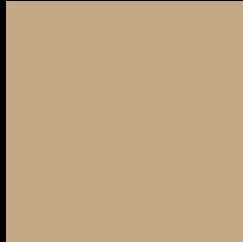
Large Text (above 18pt) WCAG AA × Fail

Any Text WCAG AA × Fail

Large Text (above 18pt) WCAG AAA × Fail

Any Text WCAG AAA × Fail

Black Background



This preview shows how the Decimal color 13019013 looks on a black background.

Color Contrast Check

Large Text (above 18pt) WCAG AA ✓ Pass

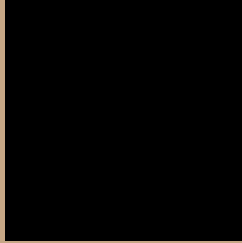
Any Text WCAG AA ✓ Pass

Large Text (above 18pt) WCAG AAA ✓ Pass

Any Text WCAG AAA ✓ Pass

If you want to check with other color combinations, try the [Color Contrast Checker](#).

Decimal 13019013 Background



This preview shows how black text looks on a background with the Decimal color 13019013.



This preview shows how white text looks on a background with the Decimal color 13019013.

Color Blindness Simulation

Color vision deficiency is a very complex topic, and I could not describe the different causes any better than Wikipedia does, so if you want to learn more, you should check out their [article about color blindness](#).

Dichromacy



Original Color
13019013

Protanopia
12102791

Deuteranopia
13280645



Tritanopia
13279662

Trichromacy



Original Color
13019013

Protanomaly
12429958

Deuteranomaly
13215365

Tritanomaly
13214623

Monochromacy



Original Color
13019013

Achromatopsia
11316396

Achromatomaly
11905694

CSS Examples

Text

The CSS property to change the color of the text to Decimal 13019013 is called "color". The color property can be set on classes, ids or directly on the HTML element.

This example shows how text in the color #C6A785 looks like.

```
.text, #text, p{  
  color:#C6A785  
}
```

If you want to add a text shadow in that color use the text-shadow property, you can generate a text shadow directly with our [CSS Text Shadow Generator](#).

Here you see how black text with a 4 pixel #C6A785 colored shadow looks like.

```
.shadow{ text-shadow: 4px 4px 2px #C6A785
}
```

Border

The CSS property to change the border of an element to Decimal 13019013 is called "border". The border property can be set on classes, ids or directly on the HTML element.

This example shows the color as border, it can be applied via the CSS property "border" or "border-color".

```
.border, #border, table{ border:4px solid
#C6A785 }
```

If only the border color should be changed use the property `border-color`.

```
.border{ border-color:#C6A785 }
```

If you want to add a box shadow in that color use:

Here you see how a box with a 4 pixel #C6A785 colored shadow looks like.

```
.boxshadow{ -moz-box-shadow:4px 4px 4px  
4px #C6A785; -webkit-box-shadow:4px 4px  
4px 4px #C6A785; box-shadow:4px 4px 4px  
4px #C6A785 }
```

Background

The CSS property to change the background color of an element to Decimal 13019013 is called "background". The background property can be set on classes, ids or directly on the HTML element.

```
.background, #background, body{  
background:#C6A785 }
```

If only the background color should be changed can be used:

```
.background{ background-color:#C6A785 }
```

This example shows the color as background, it is applied via the CSS property "background".

To optimize and compress your CSS code, you can use our [online CSS compressor and optimizer](#) based on csstidy. If you want to create a linear or radial gradient as background or border, check our [CSS Gradient Generator](#).

Hey! You found this booklet interesting? Support Converting Colors with the new Membership Option!

The pro membership hides all ads, plus gives you double the colors in the color bucket, and more awesome pro features!

[Learn more, Memberships starting at \\$2.50/m!](#)

**Follow me
on Twitter!**

@ConvertingColor