

Converting Colors

Decimal(13019291)

Have a look what the booklet for
Decimal(13019291) contains.

Decimal(13019291)	3
<i>Conversions</i>	4
<i>Details</i>	6
<i>Harmonies</i>	11
<i>Previews</i>	23
<i>Color Blindness Simulation</i>	26
<i>CSS Examples</i>	29

Color

Decimal(13019291)

Conversions

Conversions Part 1

Format	Color
Hex	C6A89B
RGB	198, 168, 155
RGB Percent	78%, 66%, 61%
CMY	0.2235, 0.3412, 0.3922
CMYK	0.00, 0.15, 0.22, 0.22
HSL	18°, 27%, 69%
HSV	18°, 22%, 78%
XYZ	43.2077, 42.3776, 36.9127
YIQ	175.4880, 22.0530, 2.3170

Conversions

Conversions Part 2

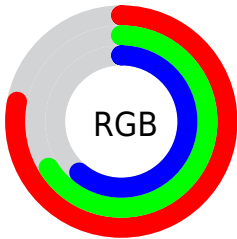
Format	Color
R _Y B	198, 174, 155
Decimal	13019291
CIE Lab	71.13, 8.89, 10.77
CIE LCh	71, 13.966, 50.456
Yxy	42.3776, 0.3527, 0.3459
Android (android.graphics.Color)	4291209371 (0xFFC6A89B)
YUV	175.4880, -10.1006, 19.7430
Hunter-Lab	65.0981, 4.5547, 11.9493

Details

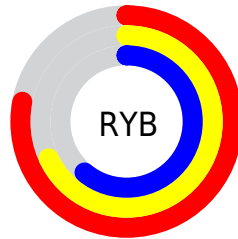
The Decimal color **13019291** is a light color, and the websafe version is hex **CC9999**. A complement of this color would be **10205638**, and the grayscale version is **11579568**.

A 20% lighter version of the original color is **16768977**, and **9466984** is the 20% darker color. If you saturate the color by 10%, you get **13015687**, and if you desaturate by 10%, it is **13022895**.

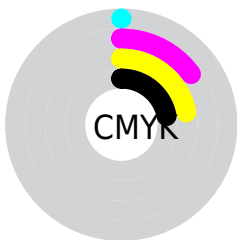
Distribution



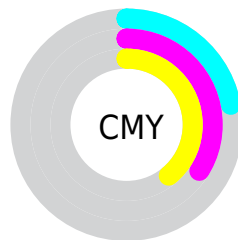
- Red (78%)
- Green (66%)
- Blue (61%)



- Red (78%)
- Yellow (68%)
- Blue (61%)



- Cyan (0%)
- Magenta (15%)
- Yellow (22%)
- Black (22%)



- Cyan (22%)
- Magenta (34%)
- Yellow (39%)

Brightness & Saturation Gradients


These gradients show how the Decimal color 13019291 changes by changing the brightness by 10 percent. The first figure shows a shift by +10% for each color and the second figure -10%.

Similar to the brightness gradients but the following saturation gradients show a change of the Decimal color 13019291 by changing the saturation by 10% instead.

 13019291

 13019291

16777215

 11177601

 16768977

 9466984

 16776430

 7756624

 6046777

 4468259

 2955534

 1572864

 0

 13019291

 13019291

 13015687

 13022895

 13012083

 13026499

 13008736

 13029846

 13005132

 13033450

 13001528

 13037054

 12997924

 13040639

 12994320

 13041663

 12991488

Harmonies

Analogous

The Analogous color harmony consists of three colors that are next to each other on the color wheel.



13215398



13019291



12364949

Triad

The Triadic color harmony groups three colors that are evenly spaced from another and form a triangle on the color wheel.



13019291



9745833



11250886

Complementary

The Complementary color scheme is a pair of colors which are on the opposite of each other on the color wheel.



13019291



10205638

Split Complementary

Split-complementary colors differ from the complementary color scheme. The scheme consists of three colors, the original color and two neighbors of the complement color.



10268871



13019291



9352886

Square

The Square scheme is like the rectangle color scheme, but the four colors are evenly spaced on the color wheel.



13019291



10531742



9483457



12298430

Rectangle

The Rectangle color scheme consists of four colors that form a rectangle on the color wheel.



13019291



11841429



9483457



10923719

Sweetspot

The Sweet Spot groups the original color and five complimentary colors.



13019291



16774125



13015993



8419445



0



8421504

Same Dimension

The Same Dimension uses a secret algorithm to generate beautiful new colors.



13019291



16765373



13024667



6511962



10694912



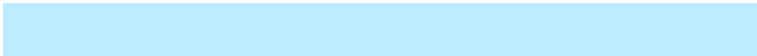
2362112

Inverse Universe

The Inverse Universe completely reimagines the original color for something new.



10205638



12446719



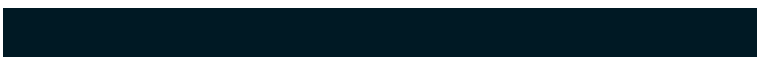
10200262



5922915



29347



6436

Previews

White Background



This preview shows how the Decimal color 13019291 looks on a white background.

Color Contrast Check

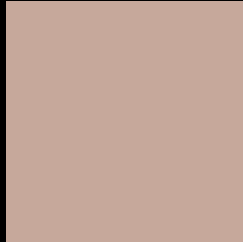
Large Text (above 18pt) WCAG AA × Fail

Any Text WCAG AA × Fail

Large Text (above 18pt) WCAG AAA × Fail

Any Text WCAG AAA × Fail

Black Background



This preview shows how the Decimal color 13019291 looks on a black background.

Color Contrast Check

Large Text (above 18pt) WCAG AA ✓ Pass

Any Text WCAG AA ✓ Pass

Large Text (above 18pt) WCAG AAA ✓ Pass

Any Text WCAG AAA ✓ Pass

If you want to check with other color combinations, try the [Color Contrast Checker](#).

Decimal 13019291 Background



This preview shows how black text looks on a background with the Decimal color 13019291.



This preview shows how white text looks on a background with the Decimal color 13019291.

Color Blindness Simulation

Color vision deficiency is a very complex topic, and I could not describe the different causes any better than Wikipedia does, so if you want to learn more, you should check out their [article about color blindness](#).

Dichromacy



Original Color
13019291

Protanopia
11906718

Deuteranopia
13019291



Tritanopia
13215153

Trichromacy



Original Color
13019291

Protanomaly
12299421

Deuteranomaly
13019291

Tritanomaly
13149865

Monochromacy



Original Color
13019291

Achromatopsia
11513775

Achromatomaly
12037288

CSS Examples

Text

The CSS property to change the color of the text to Decimal 13019291 is called "color". The color property can be set on classes, ids or directly on the HTML element.

This example shows how text in the color #C6A89B looks like.

```
.text, #text, p{  
    color:#C6A89B  
}
```

If you want to add a text shadow in that color use the text-shadow property, you can generate a text shadow directly with our [CSS Text Shadow Generator](#).

Here you see how black text with a 4 pixel #C6A89B colored shadow looks like.

```
.shadow{ text-shadow: 4px 4px 2px #C6A89B
}
```

Border

The CSS property to change the border of an element to Decimal 13019291 is called "border". The border property can be set on classes, ids or directly on the HTML element.

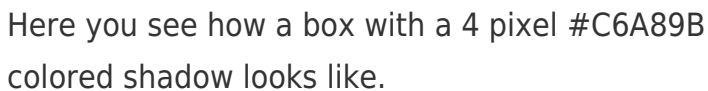
This example shows the color as border, it can be applied via the CSS property "border" or "border-color".

```
.border, #border, table{ border:4px solid
#C6A89B }
```

If only the border color should be changed use the property `border-color`.

```
.border{ border-color:#C6A89B }
```

If you want to add a box shadow in that color use:



Here you see how a box with a 4 pixel #C6A89B colored shadow looks like.

```
.boxshadow{ -moz-box-shadow:4px 4px 4px  
4px #C6A89B; -webkit-box-shadow:4px 4px  
4px 4px #C6A89B; box-shadow:4px 4px 4px  
4px #C6A89B }
```

Background

The CSS property to change the background color of an element to Decimal 13019291 is called "background". The background property can be set on classes, ids or directly on the HTML element.

```
.background, #background, body{  
background:#C6A89B }
```

If only the background color should be changed can be used:

```
.background{ background-color:#C6A89B }
```

This example shows the color as background, it is applied via the CSS property "background".

To optimize and compress your CSS code, you can use our [online CSS compressor and optimizer](#) based on csstidy. If you want to create a linear or radial gradient as background or border, check our [CSS Gradient Generator](#).

Hey! You found this booklet interesting? Support Converting Colors with the new Membership Option!

The pro membership hides all ads, plus gives you double the colors in the color bucket, and more awesome pro features!

[Learn more, Memberships starting at \\$2.50/m!](#)

**Follow me
on Twitter!**

@ConvertingColor