

Converting Colors

Decimal(13020579)

Have a look what the booklet for
Decimal(13020579) contains.

Decimal(13020579)	3
<i>Conversions</i>	4
<i>Details</i>	6
<i>Harmonies</i>	11
<i>Previews</i>	23
<i>Color Blindness Simulation</i>	26
<i>CSS Examples</i>	29

Color

Decimal(13020579)

Conversions

Conversions Part 1

Format	Color
Hex	C6ADA3
RGB	198, 173, 163
RGB Percent	78%, 68%, 64%
CMY	0.2235, 0.3216, 0.3608
CMYK	0.00, 0.13, 0.18, 0.22
HSL	17°, 23%, 71%
HSV	17°, 18%, 78%
XYZ	44.8431, 44.5373, 40.8834
YIQ	179.3350, 18.1100, 2.1900

Conversions

Conversions Part 2

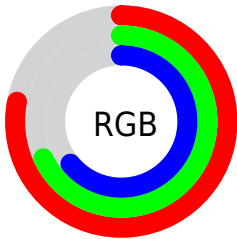
Format	Color
RYB	198, 177, 163
Decimal	13020579
CIELab	72.59, 7.41, 8.45
CIELCh	73, 11.236, 48.755
Yxy	44.5373, 0.3442, 0.3419
Android (android.graphics.Color)	4291210659 (0xFFC6ADA3)
YUV	179.3350, -8.0532, 16.3692
Hunter-Lab	66.7362, 3.1539, 10.3936

Details

The Decimal color **13020579** is a light color, and the websafe version is hex **CC9999**. A complement of this color would be **10730694**, and the grayscale version is **11776947**.

A 20% lighter version of the original color is **16770266**, and **9468271** is the 20% darker color. If you saturate the color by 10%, you get **13016975**, and if you desaturate by 10%, it is **13024183**.

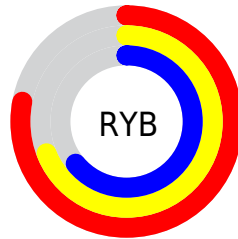
Distribution



Red (78%)

Green (68%)

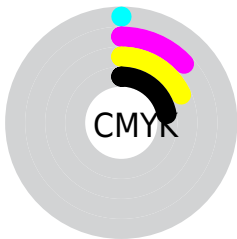
Blue (64%)



Red (78%)

Yellow (69%)

Blue (64%)

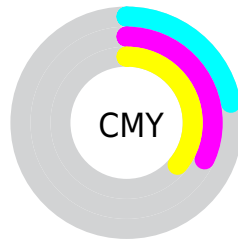


Cyan (0%)

Magenta (13%)

Yellow (18%)

Black (22%)



Cyan (22%)

Magenta (32%)

Yellow (36%)

Brightness & Saturation Gradients

These gradients show how the Decimal color 13020579 changes by changing the brightness by 10 percent. The first figure shows a shift by +10% for each color and the second figure -10%.

Similar to the brightness gradients but the following saturation gradients show a change of the Decimal color 13020579 by changing the saturation by 10% instead.

 13020579

 13020579

16777215


 11244169

 16770266

 9468271

 16777206

 7757911

 6113344

 4534826

 3022101

 1704704

 0

 13020579

 13020579

13016975

13024183

13013371

13027787

13009768

13031390

13005908

13035250

13002304

13038847

12998700

13041663

12995096

12991493

12990720

Harmonies

Analogous

The Analogous color harmony consists of three colors that are next to each other on the color wheel.



13151148



13020579



12497054

Triad

The Triadic color harmony groups three colors that are evenly spaced from another and form a triangle on the color wheel.



13020579



10401966



11514309

Complementary

The Complementary color scheme is a pair of colors which are on the opposite of each other on the color wheel.



13020579



10730694

Split Complementary

Split-complementary colors differ from the complementary color scheme. The scheme consists of three colors, the original color and two neighbors of the complement color.



10728646



13020579



10074296

Square

The Square scheme is like the rectangle color scheme, but the four colors are evenly spaced on the color wheel.



13020579



11056804



10139585



12365504

Rectangle

The Rectangle color scheme consists of four colors that form a rectangle on the color wheel.



13020579



12038814



10139585



11252422

Sweetspot

The Sweet Spot groups the original color and five complimentary colors.



13020579



16774898



13018044



8419960



0



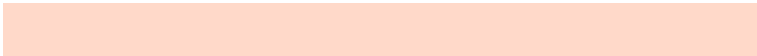
8421504

Same Dimension

The Same Dimension uses a secret algorithm to generate beautiful new colors.



13020579



16767433



13024931



6511706



10694400



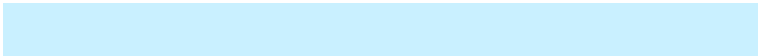
2361856

Inverse Universe

The Inverse Universe completely reimagines the original color for something new.



10730694



13234431



10726342



5923171



30115



6436

Previews

White Background



This preview shows how the Decimal color 13020579 looks on a white background.

Color Contrast Check

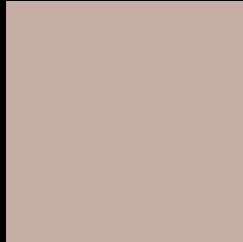
Large Text (above 18pt) WCAG AA × Fail

Any Text WCAG AA × Fail

Large Text (above 18pt) WCAG AAA × Fail

Any Text WCAG AAA × Fail

Black Background



This preview shows how the Decimal color 13020579 looks on a black background.

Color Contrast Check

Large Text (above 18pt) WCAG AA ✓ Pass

Any Text WCAG AA ✓ Pass

Large Text (above 18pt) WCAG AAA ✓ Pass

Any Text WCAG AAA ✓ Pass

If you want to check with other color combinations, try the [Color Contrast Checker](#).

Decimal 13020579 Background



This preview shows how black text looks on a background with the Decimal color 13020579.




This preview shows how white text looks on a background with the Decimal color 13020579.

Color Blindness Simulation

Color vision deficiency is a very complex topic, and I could not describe the different causes any better than Wikipedia does, so if you want to learn more, you should check out their [article about color blindness](#).

Dichromacy





Tritanopia
13216439

Trichromacy



Original Color
13020579

Protanomaly
12431524

Deuteranomaly
13151395

Tritanomaly
13151152

Monochromacy



Original Color
13020579

Achromatopsia
11776947

Achromatomaly
12235181

CSS Examples

Text

The CSS property to change the color of the text to Decimal 13020579 is called "color". The color property can be set on classes, ids or directly on the HTML element.

This example shows how text in the color #C6ADA3 looks like.

```
.text, #text, p{  
  color:#C6ADA3  
}
```

If you want to add a text shadow in that color use the text-shadow property, you can generate a text shadow directly with our [CSS Text Shadow Generator](#).

Here you see how black text with a 4 pixel #C6ADA3 colored shadow looks like.

```
.shadow{ text-shadow: 4px 4px 2px #C6ADA3
}
```

Border

The CSS property to change the border of an element to Decimal 13020579 is called "border". The border property can be set on classes, ids or directly on the HTML element.

This example shows the color as border, it can be applied via the CSS property "border" or "border-color".

```
.border, #border, table{ border:4px solid
#C6ADA3 }
```

If only the border color should be changed use the property `border-color`.

```
.border{ border-color:#C6ADA3 }
```

If you want to add a box shadow in that color use:

Here you see how a box with a 4 pixel #C6ADA3 colored shadow looks like.

```
.boxshadow{ -moz-box-shadow:4px 4px 4px  
4px #C6ADA3; -webkit-box-shadow:4px 4px  
4px 4px #C6ADA3; box-shadow:4px 4px 4px  
4px #C6ADA3 }
```

Background

The CSS property to change the background color of an element to Decimal 13020579 is called "background". The background property can be set on classes, ids or directly on the HTML element.

```
.background, #background, body{  
background:#C6ADA3 }
```

If only the background color should be changed can be used:

```
.background{ background-color:#C6ADA3 }
```

This example shows the color as background, it is applied via the CSS property "background".

To optimize and compress your CSS code, you can use our [online CSS compressor and optimizer](#) based on csstidy. If you want to create a linear or radial gradient as background or border, check our [CSS Gradient Generator](#).

Hey! You found this booklet interesting? Support Converting Colors with the new Membership Option!

The pro membership hides all ads, plus gives you double the colors in the color bucket, and more awesome pro features!

[Learn more, Memberships starting at \\$2.50/m!](#)

**Follow me
on Twitter!**

@ConvertingColor