

Converting Colors

Decimal(13020591)

Have a look what the booklet for
Decimal(13020591) contains.

Decimal(13020591)	3
<i>Conversions</i>	4
<i>Details</i>	6
<i>Harmonies</i>	11
<i>Previews</i>	23
<i>Color Blindness Simulation</i>	26
<i>CSS Examples</i>	29

Color

Decimal(13020591)

Conversions

Conversions Part 1

Format	Color
Hex	C6ADAF
RGB	198, 173, 175
RGB Percent	78%, 68%, 69%
CMY	0.2235, 0.3216, 0.3137
CMYK	0.00, 0.13, 0.12, 0.22
HSL	355°, 18%, 73%
HSV	355°, 13%, 78%
XYZ	45.9701, 44.9881, 46.8181
YIQ	180.7030, 14.2580, 5.9220

Conversions

Conversions Part 2

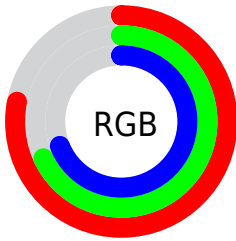
Format	Color
RYB	198, 173, 175
Decimal	13020591
CIELab	72.88, 9.36, 2.29
CIElCh	73, 9.635, 13.769
Yxy	44.9881, 0.3337, 0.3265
Android (android.graphics.Color)	4291210671 (0xFFC6ADAF)
YUV	180.7030, -2.8116, 15.1695
Hunter-Lab	67.0731, 4.9612, 5.5658

Details

The Decimal color **13020591** is a light color, and the websafe version is hex **CC9999**. A complement of this color would be **11388612**, and the grayscale version is **11908533**.

A 20% lighter version of the original color is **16770278**, and **9468283** is the 20% darker color. If you saturate the color by 10%, you get **13015453**, and if you desaturate by 10%, it is **13025729**.

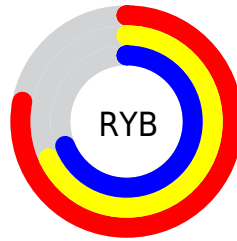
Distribution



Red (78%)

Green (68%)

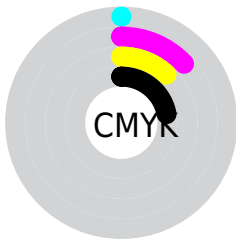
Blue (69%)



Red (78%)

Yellow (68%)

Blue (69%)

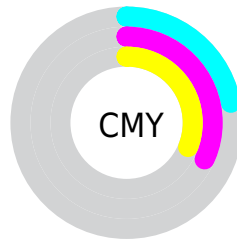


Cyan (0%)

Magenta (13%)

Yellow (12%)

Black (22%)



Cyan (22%)

Magenta (32%)

Yellow (31%)

Brightness & Saturation Gradients

These gradients show how the Decimal color 13020591 changes by changing the brightness by 10 percent. The first figure shows a shift by +10% for each color and the second figure -10%.

Similar to the brightness gradients but the following saturation gradients show a change of the Decimal color 13020591 by changing the saturation by 10% instead.

 13020591

 13020591

16777215

 11244180

 16770278

 9468283

 7757922

 6113354

 4534835

 3087390

 1835781

 0

 13020591

 13020591

 13015453

 13025729

 13010315

 13030867

 13005432

 13035750

 13000294

 13040888

 12995156

 13041663

 12990018

 12984879

 12979997

 12976144

Harmonies

Analogous

The Analogous color harmony consists of three colors that are next to each other on the color wheel.



12758456



13020591



12955303

Triad

The Triadic color harmony groups three colors that are evenly spaced from another and form a triangle on the color wheel.



13020591



11318950



10859971

Complementary

The Complementary color scheme is a pair of colors which are on the opposite of each other on the color wheel.



13020591



11388612

Split Complementary

Split-complementary colors differ from the complementary color scheme. The scheme consists of three colors, the original color and two neighbors of the complement color.



10401727



13020591



10729646

Square

The Square scheme is like the rectangle color scheme, but the four colors are evenly spaced on the color wheel.



13020591



11973794



10401975



11514564

Rectangle

The Rectangle color scheme consists of four colors that form a rectangle on the color wheel.



13020591



12693667



10401975



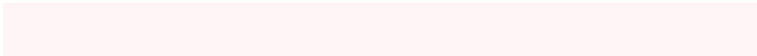
10663618

Sweetspot

The Sweet Spot groups the original color and five complimentary colors.



13020591



16774646



12889542



8419706



0



8421504

Same Dimension

The Same Dimension uses a secret algorithm to generate beautiful new colors.



13020591



16767452



13023149



6511194



10682381



2359299

Inverse Universe

The Inverse Universe completely reimagines the original color for something new.



13020591



16767452



11386054



6511194



10682381



2359299

Previews

White Background



This preview shows how the Decimal color 13020591 looks on a white background.

Color Contrast Check

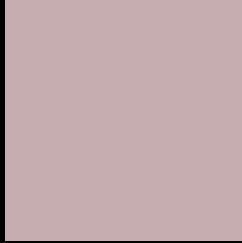
Large Text (above 18pt) WCAG AA × Fail

Any Text WCAG AA × Fail

Large Text (above 18pt) WCAG AAA × Fail

Any Text WCAG AAA × Fail

Black Background



This preview shows how the Decimal color 13020591 looks on a black background.

Color Contrast Check

Large Text (above 18pt) WCAG AA ✓ Pass

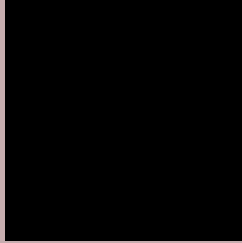
Any Text WCAG AA ✓ Pass

Large Text (above 18pt) WCAG AAA ✓ Pass

Any Text WCAG AAA ✓ Pass

If you want to check with other color combinations, try the [Color Contrast Checker](#).

Decimal 13020591 Background



This preview shows how black text looks on a background with the Decimal color 13020591.



This preview shows how white text looks on a background with the Decimal color 13020591.

Color Blindness Simulation

Color vision deficiency is a very complex topic, and I could not describe the different causes any better than Wikipedia does, so if you want to learn more, you should check out their [article about color blindness](#).

Dichromacy



Original Color
13020591

Protanopia
11973298

Deuteranopia
13020591



Tritanopia
13085625

Trichromacy



Original Color
13020591

Protanomaly
12366001

Deuteranomaly
13020591

Tritanomaly
13085877

Monochromacy



Original Color
13020591

Achromatopsia
11908533

Achromatomaly
12300979

CSS Examples

Text

The CSS property to change the color of the text to Decimal 13020591 is called "color". The color property can be set on classes, ids or directly on the HTML element.

This example shows how text in the color #C6ADAF looks like.

```
.text, #text, p{  
    color:#C6ADAF  
}
```

If you want to add a text shadow in that color use the text-shadow property, you can generate a text shadow directly with our [CSS Text Shadow Generator](#).

Here you see how black text with a 4 pixel #C6ADAF colored shadow looks like.

```
.shadow{ text-shadow: 4px 4px 2px #C6ADAF  
}
```

Border

The CSS property to change the border of an element to Decimal 13020591 is called "border". The border property can be set on classes, ids or directly on the HTML element.

This example shows the color as border, it can be applied via the CSS property "border" or "border-color".

```
.border, #border, table{ border:4px solid  
#C6ADAF }
```

If only the border color should be changed use the property `border-color`.

```
.border{ border-color:#C6ADAF }
```

If you want to add a box shadow in that color use:

Here you see how a box with a 4 pixel #C6ADAF colored shadow looks like.

```
.boxshadow{ -moz-box-shadow:4px 4px 4px  
4px #C6ADAF; -webkit-box-shadow:4px 4px  
4px 4px #C6ADAF; box-shadow:4px 4px 4px  
4px #C6ADAF }
```

Background

The CSS property to change the background color of an element to Decimal 13020591 is called "background". The background property can be set on classes, ids or directly on the HTML element.

```
.background, #background, body{  
background:#C6ADAF }
```

If only the background color should be changed can be used:

```
.background{ background-color:#C6ADAF }
```

This example shows the color as background, it is applied via the CSS property "background".

To optimize and compress your CSS code, you can use our [online CSS compressor and optimizer](#) based on csstidy. If you want to create a linear or radial gradient as background or border, check our [CSS Gradient Generator](#).

Hey! You found this booklet interesting? Support Converting Colors with the new Membership Option!

The pro membership hides all ads, plus gives you double the colors in the color bucket, and more awesome pro features!

[Learn more, Memberships starting at \\$2.50/m!](#)

**Follow me
on Twitter!**

@ConvertingColor