

Converting Colors

Decimal(13020851)

Have a look what the booklet for
Decimal(13020851) contains.

Decimal(13020851)	3
<i>Conversions</i>	4
<i>Details</i>	6
<i>Harmonies</i>	11
<i>Previews</i>	23
<i>Color Blindness Simulation</i>	26
<i>CSS Examples</i>	29

Color

Decimal(13020851)

Conversions

Conversions Part 1

Format	Color
Hex	C6AEB3
RGB	198, 174, 179
RGB Percent	78%, 68%, 70%
CMY	0.2235, 0.3176, 0.2980
CMYK	0.00, 0.12, 0.10, 0.22
HSL	348°, 17%, 73%
HSV	348°, 12%, 78%
XYZ	46.5614, 45.5325, 48.9824
YIQ	181.7460, 12.6990, 6.6430

Conversions

Conversions Part 2

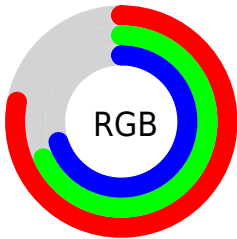
Format	Color
RYB	198, 174, 179
Decimal	13020851
CIELab	73.24, 9.49, 0.62
CIELCh	73, 9.514, 3.723
Yxy	45.5325, 0.3300, 0.3228
Android (android.graphics.Color)	4291210931 (0xFFC6AEB3)
YUV	181.7460, -1.3538, 14.2548
Hunter-Lab	67.4778, 5.0835, 4.1956

Details

The Decimal color **13020851** is a light color, and the websafe version is hex **CC9999**. A complement of this color would be **11454145**, and the grayscale version is **11974326**.

A 20% lighter version of the original color is **16770795**, and **9468542** is the 20% darker color. If you saturate the color by 10%, you get **13015715**, and if you desaturate by 10%, it is **13025987**.

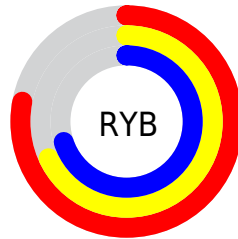
Distribution



Red (78%)

Green (68%)

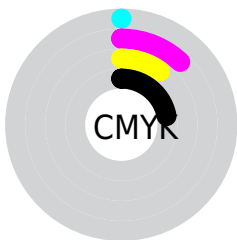
Blue (70%)



Red (78%)

Yellow (68%)

Blue (70%)

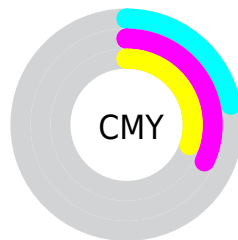


Cyan (0%)

Magenta (12%)

Yellow (10%)

Black (22%)



Cyan (22%)

Magenta (32%)

Yellow (30%)

Brightness & Saturation Gradients

These gradients show how the Decimal color 13020851 changes by changing the brightness by 10 percent. The first figure shows a shift by +10% for each color and the second figure -10%.

Similar to the brightness gradients but the following saturation gradients show a change of the Decimal color 13020851 by changing the saturation by 10% instead.

■ 13020851

■ 13020851

16777215

■ 11244440

■ 16770795

■ 9468542

■ 7758181

■ 6113613

■ 4600375

■ 3087649

■ 1836043

■ 0

■ 13020851

■ 13020851

 13015715

 13025987

 13010580

 13031122

 13005700

 13036002

 13000564

 13041138

 12995429

 13041663

 12990293

 12985157

 12980278

 12976169

Harmonies

Analogous

The Analogous color harmony consists of three colors that are next to each other on the color wheel.



12627900



13020851



13086635

Triad

The Triadic color harmony groups three colors that are evenly spaced from another and form a triangle on the color wheel.



13020851



11581093



10729411

Complementary

The Complementary color scheme is a pair of colors which are on the opposite of each other on the color wheel.



13020851



11454145

Split Complementary

Split-complementary colors differ from the complementary color scheme. The scheme consists of three colors, the original color and two neighbors of the complement color.



10402237



13020851



10926252

Square

The Square scheme is like the rectangle color scheme, but the four colors are evenly spaced on the color wheel.



13020851



12235939



10533301



11318469

Rectangle

The Rectangle color scheme consists of four colors that form a rectangle on the color wheel.



13020851



12890278



10533301



10598594

Sweetspot

The Sweet Spot groups the original color and five complimentary colors.



13020851



16774647



12693190



8419706



0



8421504

Same Dimension

The Same Dimension uses a secret algorithm to generate beautiful new colors.



13020851



16767457



13022638



6511196



10682402



2359303

Inverse Universe

The Inverse Universe completely reimagines the original color for something new.



13020851



16767457



11452358



6511196



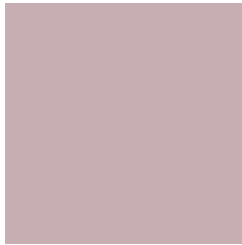
10682402



2359303

Previews

White Background



This preview shows how the Decimal color 13020851 looks on a white background.

Color Contrast Check

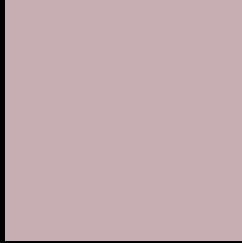
Large Text (above 18pt) WCAG AA × Fail

Any Text WCAG AA × Fail

Large Text (above 18pt) WCAG AAA × Fail

Any Text WCAG AAA × Fail

Black Background



This preview shows how the Decimal color 13020851 looks on a black background.

Color Contrast Check

Large Text (above 18pt) WCAG AA ✓ Pass

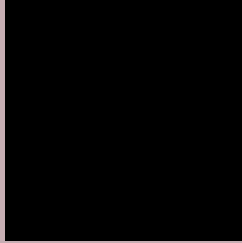
Any Text WCAG AA ✓ Pass

Large Text (above 18pt) WCAG AAA ✓ Pass

Any Text WCAG AAA ✓ Pass

If you want to check with other color combinations, try the [Color Contrast Checker](#).

Decimal 13020851 Background



This preview shows how black text looks on a background with the Decimal color 13020851.




This preview shows how white text looks on a background with the Decimal color 13020851.

Color Blindness Simulation

Color vision deficiency is a very complex topic, and I could not describe the different causes any better than Wikipedia does, so if you want to learn more, you should check out their [article about color blindness](#).

Dichromacy





Tritanopia
13086138

Trichromacy



Original Color
13020851

Protanomaly
12366261

Deuteranomaly
13020851

Tritanomaly
13086135

Monochromacy



Original Color
13020851

Achromatopsia
11974326

Achromatomaly
12366773

CSS Examples

Text

The CSS property to change the color of the text to Decimal 13020851 is called "color". The color property can be set on classes, ids or directly on the HTML element.

This example shows how text in the color #C6AEB3 looks like.

```
.text, #text, p{  
  color:#C6AEB3  
}
```

If you want to add a text shadow in that color use the text-shadow property, you can generate a text shadow directly with our [CSS Text Shadow Generator](#).

Here you see how black text with a 4 pixel #C6AEB3 colored shadow looks like.

```
.shadow{ text-shadow: 4px 4px 2px #C6AEB3
}
```

Border

The CSS property to change the border of an element to Decimal 13020851 is called "border". The border property can be set on classes, ids or directly on the HTML element.

This example shows the color as border, it can be applied via the CSS property "border" or "border-color".

```
.border, #border, table{ border:4px solid
#C6AEB3 }
```

If only the border color should be changed use the property `border-color`.

```
.border{ border-color:#C6AEB3 }
```

If you want to add a box shadow in that color use:

Here you see how a box with a 4 pixel #C6AEB3 colored shadow looks like.

```
.boxshadow{ -moz-box-shadow:4px 4px 4px  
4px #C6AEB3; -webkit-box-shadow:4px 4px  
4px 4px #C6AEB3; box-shadow:4px 4px 4px  
4px #C6AEB3 }
```

Background

The CSS property to change the background color of an element to Decimal 13020851 is called "background". The background property can be set on classes, ids or directly on the HTML element.

```
.background, #background, body{  
background:#C6AEB3 }
```

If only the background color should be changed can be used:

```
.background{ background-color:#C6AEB3 }
```

This example shows the color as background, it is applied via the CSS property "background".

To optimize and compress your CSS code, you can use our [online CSS compressor and optimizer](#) based on csstidy. If you want to create a linear or radial gradient as background or border, check our [CSS Gradient Generator](#).

Hey! You found this booklet interesting? Support Converting Colors with the new Membership Option!

The pro membership hides all ads, plus gives you double the colors in the color bucket, and more awesome pro features!

[Learn more, Memberships starting at \\$2.50/m!](#)

**Follow me
on Twitter!**

@ConvertingColor