

Converting Colors

Decimal(13021101)

Have a look what the booklet for
Decimal(13021101) contains.

Decimal(13021101)	3
<i>Conversions</i>	4
<i>Details</i>	6
<i>Harmonies</i>	11
<i>Previews</i>	23
<i>Color Blindness Simulation</i>	26
<i>CSS Examples</i>	29

Color

Decimal(13021101)

Conversions

Conversions Part 1

Format	Color
Hex	C6AFAD
RGB	198, 175, 173
RGB Percent	78%, 69%, 68%
CMY	0.2235, 0.3137, 0.3216
CMYK	0.00, 0.12, 0.13, 0.22
HSL	5°, 18%, 73%
HSV	5°, 13%, 78%
XYZ	46.1615, 45.6828, 45.9199
YIQ	181.6490, 14.3500, 4.2540

Conversions

Conversions Part 2

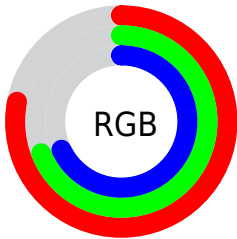
Format	Color
RYB	198, 175, 173
Decimal	13021101
CIELab	73.34, 7.94, 4.05
CIELCh	73, 8.912, 27.026
Yxy	45.6828, 0.3351, 0.3316
Android (android.graphics.Color)	4291211181 (0xFFC6AFAD)
YUV	181.6490, -4.2640, 14.3398
Hunter-Lab	67.5891, 3.6297, 7.0309

Details

The Decimal color **13021101** is a light color, and the websafe version is hex **CCCCCC**. A complement of this color would be **11388102**, and the grayscale version is **11974326**.

A 20% lighter version of the original color is **16771044**, and **9468793** is the 20% darker color. If you saturate the color by 10%, you get **13016473**, and if you desaturate by 10%, it is **13025729**.

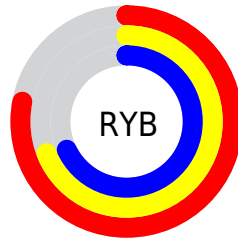
Distribution



Red (78%)

Green (69%)

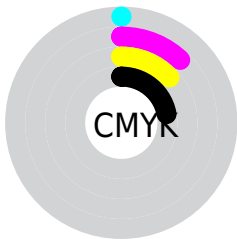
Blue (68%)



Red (78%)

Yellow (69%)

Blue (68%)

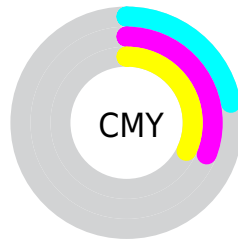


Cyan (0%)

Magenta (12%)

Yellow (13%)

Black (22%)



Cyan (22%)

Magenta (31%)

Yellow (32%)

Brightness & Saturation Gradients

These gradients show how the Decimal color 13021101 changes by changing the brightness by 10 percent. The first figure shows a shift by +10% for each color and the second figure -10%.

Similar to the brightness gradients but the following saturation gradients show a change of the Decimal color 13021101 by changing the saturation by 10% instead.

 13021101

 13021101

16777215

 11244690

 16771044

 9468793

 7758432

 6113864

 4535090

 3087901

 1836547

 0

 13021101

 13021101

 13016473

 13025729

 13011845

 13030357

 13006962

 13035240

 13002334

 13039868

 12997706

 13041663

 12993078

 12988194

 12983567

 12980224

Harmonies

Analogous

The Analogous color harmony consists of three colors that are next to each other on the color wheel.



12890037



13021101



12824999

Triad

The Triadic color harmony groups three colors that are evenly spaced from another and form a triangle on the color wheel.



13021101



11122859



11253188

Complementary

The Complementary color scheme is a pair of colors which are on the opposite of each other on the color wheel.



13021101



11388102

Split Complementary

Split-complementary colors differ from the complementary color scheme. The scheme consists of three colors, the original color and two neighbors of the complement color.



10729409



13021101



10664371

Square

The Square scheme is like the rectangle color scheme, but the four colors are evenly spaced on the color wheel.



13021101



11777702



10533307



11907779

Rectangle

The Rectangle color scheme consists of four colors that form a rectangle on the color wheel.



13021101



12563108



10533307



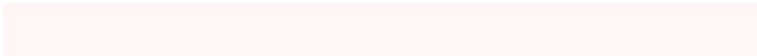
11056836

Sweetspot

The Sweet Spot groups the original color and five complimentary colors.



13021101



16774901



13020612



8419961



0



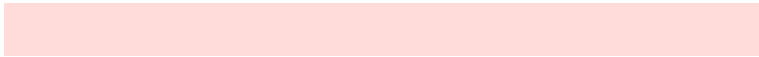
8421504

Same Dimension

The Same Dimension uses a secret algorithm to generate beautiful new colors.



13021101



16768217



13024173



6511194



10685696



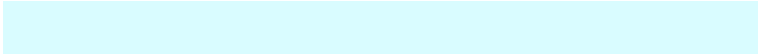
2360064

Inverse Universe

The Inverse Universe completely reimagines the original color for something new.



11388102



14286079



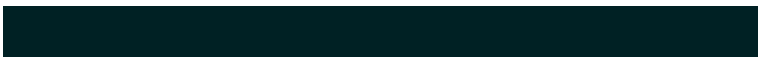
11385030



5923683



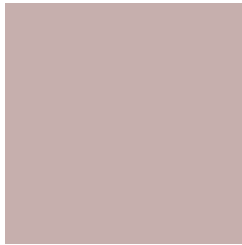
38563



8484

Previews

White Background



This preview shows how the Decimal color 13021101 looks on a white background.

Color Contrast Check

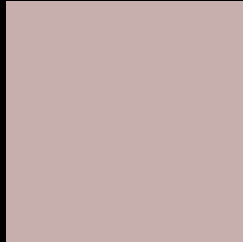
Large Text (above 18pt) WCAG AA × Fail

Any Text WCAG AA × Fail

Large Text (above 18pt) WCAG AAA × Fail

Any Text WCAG AAA × Fail

Black Background



This preview shows how the Decimal color 13021101 looks on a black background.

Color Contrast Check

Large Text (above 18pt) WCAG AA ✓ Pass

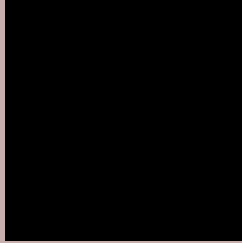
Any Text WCAG AA ✓ Pass

Large Text (above 18pt) WCAG AAA ✓ Pass

Any Text WCAG AAA ✓ Pass

If you want to check with other color combinations, try the [Color Contrast Checker](#).

Decimal 13021101 Background



This preview shows how black text looks on a background with the Decimal color 13021101.



This preview shows how white text looks on a background with the Decimal color 13021101.

Color Blindness Simulation

Color vision deficiency is a very complex topic, and I could not describe the different causes any better than Wikipedia does, so if you want to learn more, you should check out their [article about color blindness](#).

Dichromacy



Original Color
13021101

Protanopia
12104623

Deuteranopia
13151917



Tritanopia
13151674

Trichromacy



Original Color
13021101

Protanomaly
12432046

Deuteranomaly
13086381

Tritanomaly
13086389

Monochromacy



Original Color
13021101

Achromatopsia
11974326

Achromatomaly
12366771

CSS Examples

Text

The CSS property to change the color of the text to Decimal 13021101 is called "color". The color property can be set on classes, ids or directly on the HTML element.

This example shows how text in the color #C6AFAD looks like.

```
.text, #text, p{  
    color:#C6AFAD  
}
```

If you want to add a text shadow in that color use the text-shadow property, you can generate a text shadow directly with our [CSS Text Shadow Generator](#).

Here you see how black text with a 4 pixel #C6AFAD colored shadow looks like.

```
.shadow{ text-shadow: 4px 4px 2px #C6AFAD
}
```

Border

The CSS property to change the border of an element to Decimal 13021101 is called "border". The border property can be set on classes, ids or directly on the HTML element.

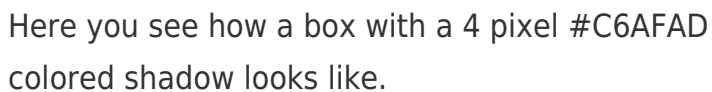
This example shows the color as border, it can be applied via the CSS property "border" or "border-color".

```
.border, #border, table{ border:4px solid
#C6AFAD }
```

If only the border color should be changed use the property `border-color`.

```
.border{ border-color:#C6AFAD }
```

If you want to add a box shadow in that color use:



Here you see how a box with a 4 pixel #C6AFAD colored shadow looks like.

```
.boxshadow{ -moz-box-shadow:4px 4px 4px  
4px #C6AFAD; -webkit-box-shadow:4px 4px  
4px 4px #C6AFAD; box-shadow:4px 4px 4px  
4px #C6AFAD }
```

Background

The CSS property to change the background color of an element to Decimal 13021101 is called "background". The background property can be set on classes, ids or directly on the HTML element.

```
.background, #background, body{  
background:#C6AFAD }
```

If only the background color should be changed can be used:

```
.background{ background-color:#C6AFAD }
```

This example shows the color as background, it is applied via the CSS property "background".

To optimize and compress your CSS code, you can use our [online CSS compressor and optimizer](#) based on csstidy. If you want to create a linear or radial gradient as background or border, check our [CSS Gradient Generator](#).

Hey! You found this booklet interesting? Support Converting Colors with the new Membership Option!

The pro membership hides all ads, plus gives you double the colors in the color bucket, and more awesome pro features!

[Learn more, Memberships starting at \\$2.50/m!](#)

**Follow me
on Twitter!**

@ConvertingColor