

Converting Colors

Decimal(13021596)

Have a look what the booklet for
Decimal(13021596) contains.

Decimal(13021596)	3
<i>Conversions</i>	4
<i>Details</i>	6
<i>Harmonies</i>	11
<i>Previews</i>	23
<i>Color Blindness Simulation</i>	26
<i>CSS Examples</i>	29

Color

Decimal(13021596)

Conversions

Conversions Part 1

Format	Color
Hex	C6B19C
RGB	198, 177, 156
RGB Percent	78%, 69%, 61%
CMY	0.2235, 0.3059, 0.3882
CMYK	0.00, 0.11, 0.21, 0.22
HSL	30°, 27%, 69%
HSV	30°, 21%, 78%
XYZ	45.0116, 45.8503, 37.9301
YIQ	180.8850, 19.2570, -2.0790

Conversions

Conversions Part 2

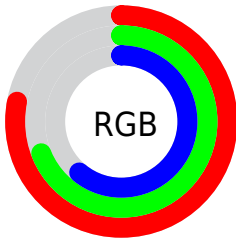
Format	Color
RYB	198, 198, 156
Decimal	13021596
CIELab	73.45, 4.18, 13.50
CIELCh	73, 14.128, 72.798
Yxy	45.8503, 0.3495, 0.3560
Android (android.graphics.Color)	4291211676 (0xFFC6B19C)
YUV	180.8850, -12.2683, 15.0099
Hunter-Lab	67.7129, 0.1589, 14.1871

Details

The Decimal color **13021596** is a light color, and the websafe version is hex **CCCCCC**. A complement of this color would be **10269126**, and the grayscale version is **11908533**.

A 20% lighter version of the original color is **16771539**, and **9469033** is the 20% darker color. If you saturate the color by 10%, you get **13019016**, and if you desaturate by 10%, it is **13024176**.

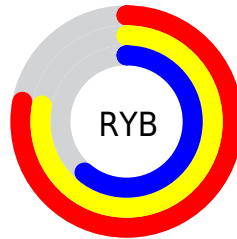
Distribution



Red (78%)

Green (69%)

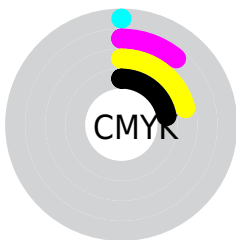
Blue (61%)



Red (78%)

Yellow (78%)

Blue (61%)

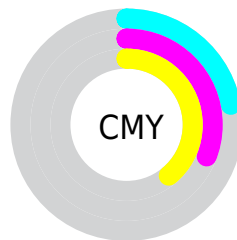


Cyan (0%)

Magenta (11%)

Yellow (21%)

Black (22%)



Cyan (22%)

Magenta (31%)

Yellow (39%)

Brightness & Saturation Gradients


These gradients show how the Decimal color 13021596 changes by changing the brightness by 10 percent. The first figure shows a shift by +10% for each color and the second figure -10%.

Similar to the brightness gradients but the following saturation gradients show a change of the Decimal color 13021596 by changing the saturation by 10% instead.

 13021596

 13021596

16777215

 11179650

 16771539

 9469033

 16777199

 7758929

 6114362

 4535588

 3022863

 1575168

 0

 13021596

 13021596

 13019016

 13024176

 13016436

 13026756

 13013857

 13029335

 13011277

 13031915

 13008953

 13034495

 13006373

 13036799

 13003793

 13039359

 13001472

 13041663

Harmonies

Analogous

The Analogous color harmony consists of three colors that are next to each other on the color wheel.



13544867



13021596



12170651

Triad

The Triadic color harmony groups three colors that are evenly spaced from another and form a triangle on the color wheel.



13021596



9747642



12496839

Complementary

The Complementary color scheme is a pair of colors which are on the opposite of each other on the color wheel.



13021596



10269126

Split Complementary

Split-complementary colors differ from the complementary color scheme. The scheme consists of three colors, the original color and two neighbors of the complement color.



11384013



13021596



9747397

Square

The Square scheme is like the rectangle color scheme, but the four colors are evenly spaced on the color wheel.



13021596



10337196



10401997



13282492

Rectangle

The Rectangle color scheme consists of four colors that form a rectangle on the color wheel.



13021596



11516062



10401997



12169674

Sweetspot

The Sweet Spot groups the original color and five complimentary colors.



13021596



16775152



13016241



8420215



0



8421504

Same Dimension

The Same Dimension uses a secret algorithm to generate beautiful new colors.



13021596



16768959



13026716



6512218



10703360



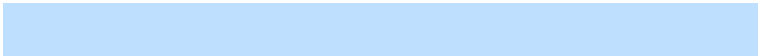
2363904

Inverse Universe

The Inverse Universe completely reimagines the original color for something new.



10269126



12574719



10264006



5922403



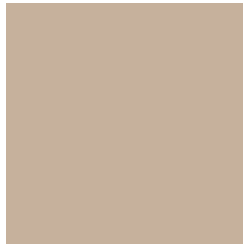
21155



4644

Previews

White Background



This preview shows how the Decimal color 13021596 looks on a white background.

Color Contrast Check

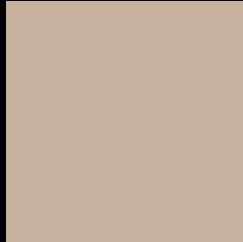
Large Text (above 18pt) WCAG AA × Fail

Any Text WCAG AA × Fail

Large Text (above 18pt) WCAG AAA × Fail

Any Text WCAG AAA × Fail

Black Background



This preview shows how the Decimal color 13021596 looks on a black background.

Color Contrast Check

Large Text (above 18pt) WCAG AA ✓ Pass

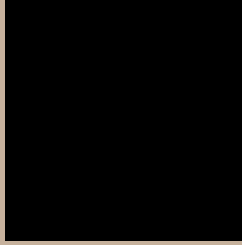
Any Text WCAG AA ✓ Pass

Large Text (above 18pt) WCAG AAA ✓ Pass

Any Text WCAG AAA ✓ Pass

If you want to check with other color combinations, try the [Color Contrast Checker](#).

Decimal 13021596 Background



This preview shows how black text looks on a background with the Decimal color 13021596.



This preview shows how white text looks on a background with the Decimal color 13021596.

Color Blindness Simulation

Color vision deficiency is a very complex topic, and I could not describe the different causes any better than Wikipedia does, so if you want to learn more, you should check out their [article about color blindness](#).

Dichromacy



Original Color
13021596

Protanopia
12432542

Deuteranopia
13545117



Tritanopia
13282746

Trichromacy



Original Color
13021596

Protanomaly
12628893

Deuteranomaly
13348765

Tritanomaly
13217455

Monochromacy



Original Color
13021596

Achromatopsia
11908533

Achromatomaly
12301484

CSS Examples

Text

The CSS property to change the color of the text to Decimal 13021596 is called "color". The color property can be set on classes, ids or directly on the HTML element.

This example shows how text in the color #C6B19C looks like.

```
.text, #text, p{  
    color:#C6B19C  
}
```

If you want to add a text shadow in that color use the text-shadow property, you can generate a text shadow directly with our [CSS Text Shadow Generator](#).

Here you see how black text with a 4 pixel #C6B19C colored shadow looks like.

```
.shadow{ text-shadow: 4px 4px 2px #C6B19C
}
```

Border

The CSS property to change the border of an element to Decimal 13021596 is called "border". The border property can be set on classes, ids or directly on the HTML element.

This example shows the color as border, it can be applied via the CSS property "border" or "border-color".

```
.border, #border, table{ border:4px solid
#C6B19C }
```

If only the border color should be changed use the property `border-color`.

```
.border{ border-color:#C6B19C }
```

If you want to add a box shadow in that color use:

Here you see how a box with a 4 pixel #C6B19C colored shadow looks like.

```
.boxshadow{ -moz-box-shadow:4px 4px 4px  
4px #C6B19C; -webkit-box-shadow:4px 4px  
4px 4px #C6B19C; box-shadow:4px 4px 4px  
4px #C6B19C }
```

Background

The CSS property to change the background color of an element to Decimal 13021596 is called "background". The background property can be set on classes, ids or directly on the HTML element.

```
.background, #background, body{  
background:#C6B19C }
```

If only the background color should be changed can be used:

```
.background{ background-color:#C6B19C }
```

This example shows the color as background, it is applied via the CSS property "background".

To optimize and compress your CSS code, you can use our [online CSS compressor and optimizer](#) based on csstidy. If you want to create a linear or radial gradient as background or border, check our [CSS Gradient Generator](#).

Hey! You found this booklet interesting? Support Converting Colors with the new Membership Option!

The pro membership hides all ads, plus gives you double the colors in the color bucket, and more awesome pro features!

[Learn more, Memberships starting at \\$2.50/m!](#)

**Follow me
on Twitter!**

@ConvertingColor