

# Converting Colors

Decimal(13022903)

Have a look what the booklet for  
Decimal(13022903) contains.

<b>Decimal(13022903)</b> .....	3
<i><b>Conversions</b></i> .....	4
<i><b>Details</b></i> .....	6
<i><b>Harmonies</b></i> .....	11
<i><b>Previews</b></i> .....	23
<i><b>Color Blindness Simulation</b></i> .....	26
<i><b>CSS Examples</b></i> .....	29

# **Color**

**Decimal(13022903)**

# Conversions

## Conversions Part 1

Format	Color
Hex	C6B6B7
RGB	198, 182, 183
RGB Percent	78%, 71%, 72%
CMY	0.2235, 0.2863, 0.2824
CMYK	0.00, 0.08, 0.08, 0.22
HSL	356°, 12%, 75%
HSV	356°, 8%, 78%
XYZ	48.5639, 48.8806, 51.6750
YIQ	186.8980, 9.2150, 3.7030

# Conversions

## Conversions Part 2

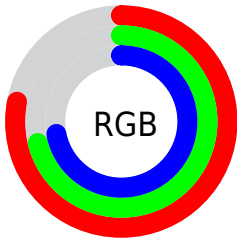
<b>Format</b>	<b>Color</b>
<b>RYB</b>	198, 182, 183
Decimal	13022903
CIELab	75.38, 5.86, 1.54
CIELCh	75, 6.059, 14.745
Yxy	48.8806, 0.3257, 0.3278
Android (android.graphics.Color)	4291212983 (0xFFC6B6B7)
YUV	186.8980, -1.9217, 9.7365
Hunter-Lab	69.9146, 1.6385, 5.1180

# Details

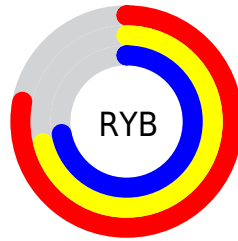
The Decimal color **13022903** is a light color, and the websafe version is hex **CCCCCC**. A complement of this color would be **11978437**, and the grayscale version is **12303291**.

A 20% lighter version of the original color is **16772847**, and **9470338** is the 20% darker color. If you saturate the color by 10%, you get **13017764**, and if you desaturate by 10%, it is **13028042**.

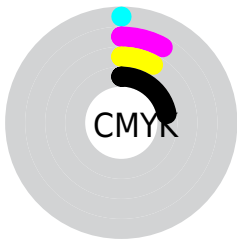
# Distribution



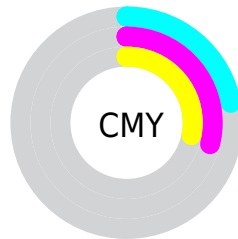
- Red (78%)
- Green (71%)
- Blue (72%)



- Red (78%)
- Yellow (71%)
- Blue (72%)



- Cyan (0%)
- Magenta (8%)
- Yellow (8%)
- Black (22%)



- Cyan (22%)
- Magenta (29%)
- Yellow (28%)

# Brightness & Saturation Gradients

These gradients show how the Decimal color 13022903 changes by changing the brightness by 10 percent. The first figure shows a shift by +10% for each color and the second figure -10%.

Similar to the brightness gradients but the following saturation gradients show a change of the Decimal color 13022903 by changing the saturation by 10% instead.



 13022903

 13022903

16777215

 11246492

 16772847

 9470338

 7759977

 6180945

 4602170

 3089444

 1773071

 0

 13022903

 13022903

 13017764

 13028042

 13012626

 13033180

 13007743

 13038063

 13002605

 13041663

 12997466

 12992328

 12987189

 12982307

 12977168

# Harmonies

## Analogous

The Analogous color harmony consists of three colors that are next to each other on the color wheel.



12826301



13022903



12957618

# Triad

The Triadic color harmony groups three colors that are evenly spaced from another and form a triangle on the color wheel.



13022903



11910322



11647940

# Complementary

The Complementary color scheme is a pair of colors which are on the opposite of each other on the color wheel.



13022903



11978437

# Split Complementary

Split-complementary colors differ from the complementary color scheme. The scheme consists of three colors, the original color and two neighbors of the complement color.



11386049



13022903



11517367

# Square

The Square scheme is like the rectangle color scheme, but the four colors are evenly spaced on the color wheel.



13022903



12303023



11320764



12040644

# Rectangle

The Rectangle color scheme consists of four colors that form a rectangle on the color wheel.



13022903



12826800



11320764



11517124

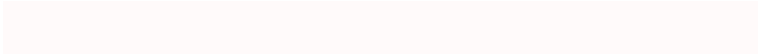


# Sweetspot

The Sweet Spot groups the original color and five complimentary colors.



13022903



16775930



12957382



8420733



0



8421504

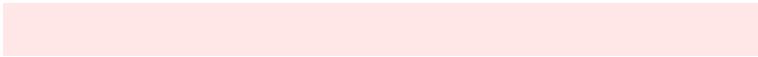


# Same Dimension

The Same Dimension uses a secret algorithm to generate beautiful new colors.



13022903



16770791



13024694



6511194



10682378



2359298

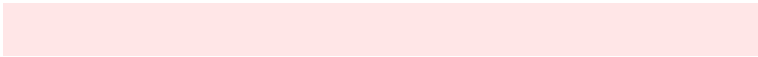


# Inverse Universe

The Inverse Universe completely reimagines the original color for something new.



13022903



16770791



11976646



6511194



10682378

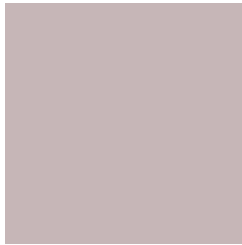


2359298



# Previews

## White Background



This preview shows how the Decimal color 13022903 looks on a white background.

## Color Contrast Check

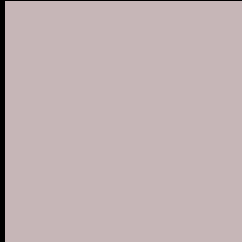
Large Text (above 18pt) WCAG AA × Fail

Any Text WCAG AA × Fail

Large Text (above 18pt) WCAG AAA × Fail

Any Text WCAG AAA × Fail

# Black Background



This preview shows how the Decimal color 13022903 looks on a black background.

## Color Contrast Check

Large Text (above 18pt) WCAG AA ✓ Pass

Any Text WCAG AA ✓ Pass

Large Text (above 18pt) WCAG AAA ✓ Pass

Any Text WCAG AAA ✓ Pass

If you want to check with other color combinations, try the [Color Contrast Checker](#).



## Decimal 13022903 Background



This preview shows how black text looks on a background with the Decimal color 13022903.



This preview shows how white text looks on a background with the Decimal color 13022903.

# Color Blindness Simulation

Color vision deficiency is a very complex topic, and I could not describe the different causes any better than Wikipedia does, so if you want to learn more, you should check out their [article about color blindness](#).


## Dichromacy



**Original Color**  
13022903

**Protanopia**  
12433849

**Deuteranopia**  
13415607



**Tritanopia**  
13153474

# Trichromacy



**Original Color**  
13022903

**Protanomaly**  
12630200

**Deuteranomaly**  
13284791

**Tritanomaly**  
13088190

# Monochromacy



**Original Color**  
13022903

**Achromatopsia**  
12303291

**Achromatomaly**  
12564922

# CSS Examples

## Text

The CSS property to change the color of the text to Decimal 13022903 is called "color". The color property can be set on classes, ids or directly on the HTML element.

This example shows how text in the color #C6B6B7 looks like.

```
.text, #text, p{  
  color:#C6B6B7  
}
```

If you want to add a text shadow in that color use the text-shadow property, you can generate a text shadow directly with our [CSS Text Shadow Generator](#).

Here you see how black text with a 4 pixel #C6B6B7 colored shadow looks like.

```
.shadow{ text-shadow: 4px 4px 2px #C6B6B7
}
```

## Border

The CSS property to change the border of an element to Decimal 13022903 is called "border". The border property can be set on classes, ids or directly on the HTML element.

This example shows the color as border, it can be applied via the CSS property "border" or "border-color".

```
.border, #border, table{ border:4px solid
#C6B6B7 }
```

If only the border color should be changed use the property `border-color`.

```
.border{ border-color:#C6B6B7 }
```

If you want to add a box shadow in that color use:

Here you see how a box with a 4 pixel #C6B6B7 colored shadow looks like.

```
.boxshadow{ -moz-box-shadow:4px 4px 4px  
4px #C6B6B7; -webkit-box-shadow:4px 4px  
4px 4px #C6B6B7; box-shadow:4px 4px 4px  
4px #C6B6B7 }
```

# Background

The CSS property to change the background color of an element to Decimal 13022903 is called "background". The background property can be set on classes, ids or directly on the HTML element.

```
.background, #background, body{  
background:#C6B6B7 }
```

If only the background color should be changed can be used:

```
.background{ background-color:#C6B6B7 }
```

This example shows the color as background, it is applied via the CSS property "background".

To optimize and compress your CSS code, you can use our [online CSS compressor and optimizer](#) based on csstidy. If you want to create a linear or radial gradient as background or border, check our [CSS Gradient Generator](#).



Hey! You found this booklet interesting? Support Converting Colors with the new Membership Option!

The pro membership hides all ads, plus gives you double the colors in the color bucket, and more awesome pro features!

**[Learn more, Memberships starting at \\$2.50/m!](#)**

**Follow me  
on Twitter!**

@ConvertingColor