

# Converting Colors

Decimal(13065872)

Have a look what the booklet for  
Decimal(13065872) contains.

<b>Decimal(13065872)</b> .....	3
<i><b>Conversions</b></i> .....	4
<i><b>Details</b></i> .....	6
<i><b>Harmonies</b></i> .....	11
<i><b>Previews</b></i> .....	23
<i><b>Color Blindness Simulation</b></i> .....	26
<i><b>CSS Examples</b></i> .....	29

# Color

**Decimal(13065872)**

# Conversions

## Conversions Part 1

<b>Format</b>	<b>Color</b>
Hex	C75E90
RGB	199, 94, 144
RGB Percent	78%, 37%, 56%
CMY	0.2196, 0.6314, 0.4353
CMYK	0.00, 0.53, 0.28, 0.22
HSL	331°, 48%, 57%
HSV	331°, 53%, 78%
XYZ	32.5899, 22.1611, 28.9454
YIQ	131.0950, 46.5300, 37.8100

# Conversions

## Conversions Part 2

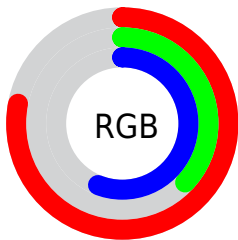
<b>Format</b>	<b>Color</b>
R <sub>Y</sub> B	199, 94, 144
Decimal	13065872
CIE Lab	54.20, 47.38, -7.57
CIE LCh	54, 47.985, 350.925
Yxy	22.1611, 0.3894, 0.2648
Android (android.graphics.Color)	4291255952 (0xFFC75E90)
YUV	131.0950, 6.3622, 59.5527
Hunter-Lab	47.0756, 41.1913, -3.5027

# Details

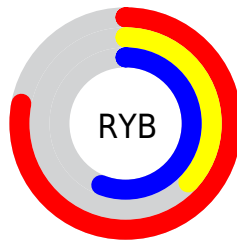
The Decimal color **13065872** is a dark color, and the websafe version is hex **CC6699**. The color can be described as middle muted rose. A complement of this color would be **6211477**, and the grayscale version is **8618883**.

A 20% lighter version of the original color is **16749766**, and **9316446** is the 20% darker color. If you saturate the color by 10%, you get **13060742**, and if you desaturate by 10%, it is **13071002**.

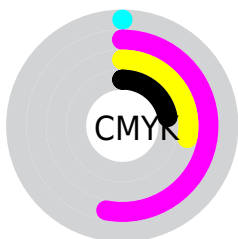
# Distribution



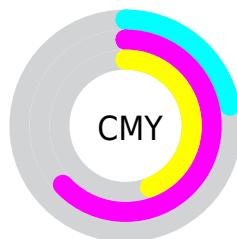
- Red (78%)
- Green (37%)
- Blue (56%)



- Red (78%)
- Yellow (37%)
- Blue (56%)



- Cyan (0%)
- Magenta (53%)
- Yellow (28%)
- Black (22%)



- Cyan (22%)
- Magenta (63%)
- Yellow (44%)

# Brightness & Saturation Gradients

These gradients show how the Decimal color 13065872 changes by changing the brightness by 10 percent. The first figure shows a shift by +10% for each color and the second figure -10%.


Similar to the brightness gradients but the following saturation gradients show a change of the Decimal color 13065872 by changing the saturation by 10% instead.



 13065872

 13065872

16777215

 11158646

 16749766

 9316446

 16756706

 7537990

 16764158

 5701680

 16771327

 4063259

 2359297

 0

 13065872

 13065872

 13060742

 13071002

 13055611

 13076133

 13050481

 13081263

 13045350

 13086394

 13041759

 13091524

 13096399

 13101529

 13106659

 13107182

# Harmonies

## Analogous

The Analogous color harmony consists of three colors that are next to each other on the color wheel.



11037622



13065872



13524582

# Triad

The Triadic color harmony groups three colors that are evenly spaced from another and form a triangle on the color wheel.



13065872



8161327



37569

# Complementary

The Complementary color scheme is a pair of colors which are on the opposite of each other on the color wheel.



13065872



6211477

# Split Complementary

Split-complementary colors differ from the complementary color scheme. The scheme consists of three colors, the original color and two neighbors of the complement color.



38558



13065872



4886859

# Square

The Square scheme is like the rectangle color scheme, but the four colors are evenly spaced on the color wheel.



13065872



10713900



38259



35539

# Rectangle

The Rectangle color scheme consists of four colors that form a rectangle on the color wheel.



13065872



13067853



38259



38071



# Sweetspot

The Sweet Spot groups the original color and five complimentary colors.



13065872



16766698



9723591



8415091



0



8421504



# Same Dimension

The Same Dimension uses a secret algorithm to generate beautiful new colors.



13065872



16735915



13066334



6511198



10682446



2359313



# Inverse Universe

The Inverse Universe completely reimagines the original color for something new.



13065872



16735915



6211015



6511198



10682446



2359313



# Previews

## White Background



This preview shows how the Decimal color 13065872 looks on a white background.

## Color Contrast Check

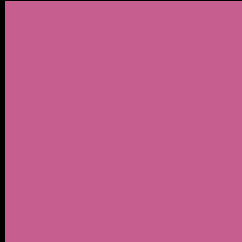
Large Text (above 18pt) WCAG AA ✓ Pass

Any Text WCAG AA × Fail

Large Text (above 18pt) WCAG AAA × Fail

Any Text WCAG AAA × Fail

# Black Background



This preview shows how the Decimal color 13065872 looks on a black background.

## Color Contrast Check

Large Text (above 18pt) WCAG AA ✓ Pass

Any Text WCAG AA ✓ Pass

Large Text (above 18pt) WCAG AAA ✓ Pass

Any Text WCAG AAA × Fail

If you want to check with other color combinations, try the [Color Contrast Checker](#).



## Decimal 13065872 Background



This preview shows how black text looks on a background with the Decimal color 13065872.



This preview shows how white text looks on a background with the Decimal color 13065872.

# Color Blindness Simulation

Color vision deficiency is a very complex topic, and I could not describe the different causes any better than Wikipedia does, so if you want to learn more, you should check out their [article about color blindness](#).

## Dichromacy



**Original Color**  
13065872

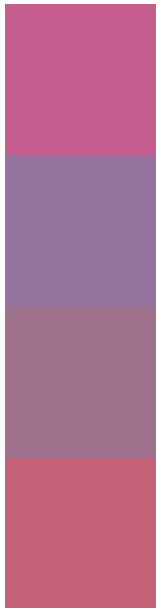
**Protanopia**  
7897511

**Deuteranopia**  
9141899



**Tritanopia**  
12871020

# Trichromacy



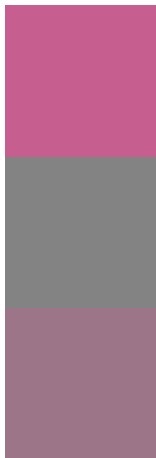
**Original Color**  
13065872

**Protanomaly**  
9794719

**Deuteranomaly**  
10580621

**Tritanomaly**  
12935801

# Monochromacy



**Original Color**  
13065872

**Achromatopsia**  
8618883

**Achromatomaly**  
10253960

# CSS Examples

## Text

The CSS property to change the color of the text to Decimal 13065872 is called "color". The color property can be set on classes, ids or directly on the HTML element.

This example shows how text in the color #C75E90 looks like.

```
.text, #text, p{  
    color:#C75E90  
}
```

If you want to add a text shadow in that color use the text-shadow property, you can generate a text shadow directly with our [CSS Text Shadow Generator](#).

Here you see how black text with a 4 pixel #C75E90 colored shadow looks like.

```
.shadow{ text-shadow: 4px 4px 2px #C75E90
}
```

## Border

The CSS property to change the border of an element to Decimal 13065872 is called "border". The border property can be set on classes, ids or directly on the HTML element.

This example shows the color as border, it can be applied via the CSS property "border" or "border-color".

```
.border, #border, table{ border:4px solid
#C75E90 }
```

If only the border color should be changed use the property `border-color`.

```
.border{ border-color:#C75E90 }
```

If you want to add a box shadow in that color use:

Here you see how a box with a 4 pixel #C75E90 colored shadow looks like.

```
.boxshadow{ -moz-box-shadow:4px 4px 4px  
4px #C75E90; -webkit-box-shadow:4px 4px  
4px 4px #C75E90; box-shadow:4px 4px 4px  
4px #C75E90 }
```

# Background

The CSS property to change the background color of an element to Decimal 13065872 is called "background". The background property can be set on classes, ids or directly on the HTML element.

```
.background, #background, body{  
background:#C75E90 }
```

If only the background color should be changed can be used:

```
.background{ background-color:#C75E90 }
```

This example shows the color as background, it is applied via the CSS property "background".

To optimize and compress your CSS code, you can use our [online CSS compressor and optimizer](#) based on csstidy. If you want to create a linear or radial gradient as background or border, check our [CSS Gradient Generator](#).



Hey! You found this booklet interesting? Support Converting Colors with the new Membership Option!

The pro membership hides all ads, plus gives you double the colors in the color bucket, and more awesome pro features!

**[Learn more, Memberships starting at \\$2.50/m!](#)**

**Follow me  
on Twitter!**

@ConvertingColor