

Converting Colors

Decimal(13066129)

Have a look what the booklet for
Decimal(13066129) contains.

Decimal(13066129)	3
<i>Conversions</i>	4
<i>Details</i>	6
<i>Harmonies</i>	11
<i>Previews</i>	23
<i>Color Blindness Simulation</i>	26
<i>CSS Examples</i>	29

Color

Decimal(13066129)

Conversions

Conversions Part 1

Format	Color
Hex	C75F91
RGB	199, 95, 145
RGB Percent	78%, 37%, 57%
CMY	0.2196, 0.6275, 0.4314
CMYK	0.00, 0.52, 0.27, 0.22
HSL	331°, 48%, 58%
HSV	331°, 52%, 78%
XYZ	32.7562, 22.3709, 29.3796
YIQ	131.7960, 45.9340, 37.5980

Conversions

Conversions Part 2

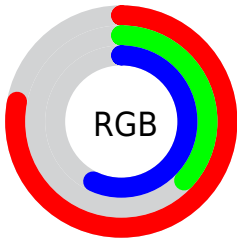
Format	Color
R _Y B	199, 95, 145
Decimal	13066129
CIE Lab	54.42, 47.03, -7.83
CIE LCh	54, 47.674, 350.550
Yxy	22.3709, 0.3876, 0.2647
Android (android.graphics.Color)	4291256209 (0xFFC75F91)
YUV	131.7960, 6.5096, 58.9379
Hunter-Lab	47.2978, 40.8493, -3.7202

Details

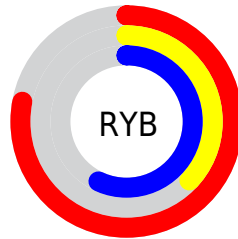
The Decimal color **13066129** is a dark color, and the websafe version is hex **CC6699**. The color can be described as middle muted rose. A complement of this color would be **6277013**, and the grayscale version is **8684676**.

A 20% lighter version of the original color is **16750023**, and **9316959** is the 20% darker color. If you saturate the color by 10%, you get **13060999**, and if you desaturate by 10%, it is **13071259**.

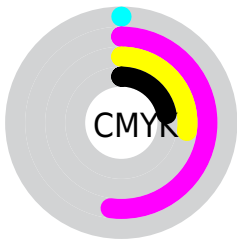
Distribution



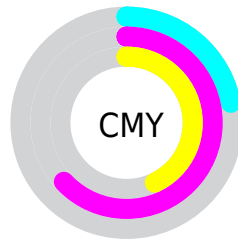
- Red (78%)
- Green (37%)
- Blue (57%)



- Red (78%)
- Yellow (37%)
- Blue (57%)



- Cyan (0%)
- Magenta (52%)
- Yellow (27%)
- Black (22%)



- Cyan (22%)
- Magenta (63%)
- Yellow (43%)

Brightness & Saturation Gradients

These gradients show how the Decimal color 13066129 changes by changing the brightness by 10 percent. The first figure shows a shift by +10% for each color and the second figure -10%.

Similar to the brightness gradients but the following saturation gradients show a change of the Decimal color 13066129 by changing the saturation by 10% instead.

 13066129

 13066129

16777215

 11158903

 16750023

 9316959

 16756963

 7538503

 16764415

 5767217

 16771583

 4063260

 2424833

 0

 13066129

 13066129

 13060999

 13071259

13055868

13076390

13050738

13081520

13045608

13086650

13041760

13091781

13096655

13101785

13106916

13107182

Harmonies

Analogous

The Analogous color harmony consists of three colors that are next to each other on the color wheel.



11037879



13066129



13524840

Triad

The Triadic color harmony groups three colors that are evenly spaced from another and form a triangle on the color wheel.



13066129



8227120



37825

Complementary

The Complementary color scheme is a pair of colors which are on the opposite of each other on the color wheel.



13066129



6277013

Split Complementary

Split-complementary colors differ from the complementary color scheme. The scheme consists of three colors, the original color and two neighbors of the complement color.



38558



13066129



5017931

Square

The Square scheme is like the rectangle color scheme, but the four colors are evenly spaced on the color wheel.



13066129



10779437



38515



35539

Rectangle

The Rectangle color scheme consists of four colors that form a rectangle on the color wheel.



13066129



13068111



38515



38327

Sweetspot

The Sweet Spot groups the original color and five complimentary colors.



13066129



16766698



9789383



8415091



0



8421504

Same Dimension

The Same Dimension uses a secret algorithm to generate beautiful new colors.



13066129



16735916



13066591



6511198



10682446



2359313

Inverse Universe

The Inverse Universe completely reimagines the original color for something new.



13066129



16735916



6276551



6511198



10682446



2359313

Previews

White Background



This preview shows how the Decimal color 13066129 looks on a white background.

Color Contrast Check

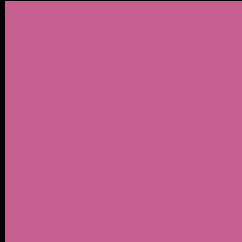
Large Text (above 18pt) WCAG AA ✓ Pass

Any Text WCAG AA ✗ Fail

Large Text (above 18pt) WCAG AAA ✗ Fail

Any Text WCAG AAA ✗ Fail

Black Background



This preview shows how the Decimal color 13066129 looks on a black background.

Color Contrast Check

Large Text (above 18pt) WCAG AA ✓ Pass

Any Text WCAG AA ✓ Pass

Large Text (above 18pt) WCAG AAA ✓ Pass

Any Text WCAG AAA × Fail

If you want to check with other color combinations, try the [Color Contrast Checker](#).

Decimal 13066129 Background



This preview shows how black text looks on a background with the Decimal color 13066129.



This preview shows how white text looks on a background with the Decimal color 13066129.

Color Blindness Simulation

Color vision deficiency is a very complex topic, and I could not describe the different causes any better than Wikipedia does, so if you want to learn more, you should check out their [article about color blindness](#).

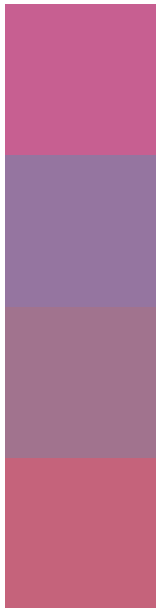
Dichromacy





Tritanopia
12871278

Trichromacy



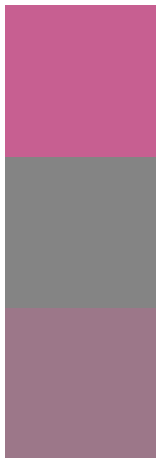
Original Color
13066129

Protanomaly
9794976

Deuteranomaly
10580878

Tritanomaly
12936059

Monochromacy



Original Color
13066129

Achromatopsia
8684676

Achromatomaly
10254217

CSS Examples

Text

The CSS property to change the color of the text to Decimal 13066129 is called "color". The color property can be set on classes, ids or directly on the HTML element.

This example shows how text in the color #C75F91 looks like.

```
.text, #text, p{  
    color:#C75F91  
}
```

If you want to add a text shadow in that color use the text-shadow property, you can generate a text shadow directly with our [CSS Text Shadow Generator](#).

Here you see how black text with a 4 pixel #C75F91 colored shadow looks like.

```
.shadow{ text-shadow: 4px 4px 2px #C75F91
}
```

Border

The CSS property to change the border of an element to Decimal 13066129 is called "border". The border property can be set on classes, ids or directly on the HTML element.

This example shows the color as border, it can be applied via the CSS property "border" or "border-color".

```
.border, #border, table{ border:4px solid
#C75F91 }
```

If only the border color should be changed use the property `border-color`.

```
.border{ border-color:#C75F91 }
```

If you want to add a box shadow in that color use:

Here you see how a box with a 4 pixel #C75F91 colored shadow looks like.

```
.boxshadow{ -moz-box-shadow:4px 4px 4px  
4px #C75F91; -webkit-box-shadow:4px 4px  
4px 4px #C75F91; box-shadow:4px 4px 4px  
4px #C75F91 }
```

Background

The CSS property to change the background color of an element to Decimal 13066129 is called "background". The background property can be set on classes, ids or directly on the HTML element.

```
.background, #background, body{  
background:#C75F91 }
```

If only the background color should be changed can be used:

```
.background{ background-color:#C75F91 }
```

This example shows the color as background, it is applied via the CSS property "background".

To optimize and compress your CSS code, you can use our [online CSS compressor and optimizer](#) based on csstidy. If you want to create a linear or radial gradient as background or border, check our [CSS Gradient Generator](#).

Hey! You found this booklet interesting? Support Converting Colors with the new Membership Option!

The pro membership hides all ads, plus gives you double the colors in the color bucket, and more awesome pro features!

[Learn more, Memberships starting at \\$2.50/m!](#)

**Follow me
on Twitter!**

@ConvertingColor