

Converting Colors

Decimal(13076862)

Have a look what the booklet for
Decimal(13076862) contains.

Decimal(13076862)	3
<i>Conversions</i>	4
<i>Details</i>	6
<i>Harmonies</i>	11
<i>Previews</i>	23
<i>Color Blindness Simulation</i>	26
<i>CSS Examples</i>	29

Color

Decimal(13076862)

Conversions

Conversions Part 1

Format	Color
Hex	C7897E
RGB	199, 137, 126
RGB Percent	78%, 54%, 49%
CMY	0.2196, 0.4627, 0.5059
CMYK	0.00, 0.31, 0.37, 0.22
HSL	9°, 39%, 64%
HSV	9°, 37%, 78%
XYZ	36.2647, 31.5398, 23.9151
YIQ	154.2840, 40.4830, 9.7230

Conversions

Conversions Part 2

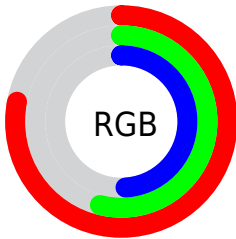
Format	Color
RYB	199, 139, 126
Decimal	13076862
CIELab	62.96, 22.30, 15.47
CIElCh	63, 27.140, 34.747
Yxy	31.5398, 0.3954, 0.3439
Android (android.graphics.Color)	4291266942 (0xFFC7897E)
YUV	154.2840, -13.9440, 39.2159
Hunter-Lab	56.1603, 16.9834, 14.0644

Details

The Decimal color **13076862** is a light color, and the websafe version is hex **CC9999**. A complement of this color would be **8305863**, and the grayscale version is **10132122**.

A 20% lighter version of the original color is **16760755**, and **9393997** is the 20% darker color. If you saturate the color by 10%, you get **13072490**, and if you desaturate by 10%, it is **13081234**.

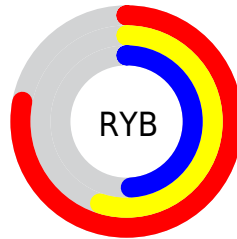
Distribution



Red (78%)

Green (54%)

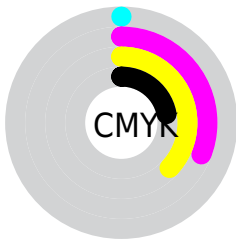
Blue (49%)



Red (78%)

Yellow (55%)

Blue (49%)

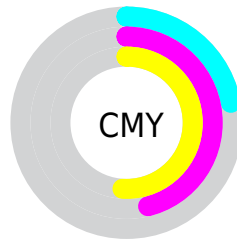


Cyan (0%)

Magenta (31%)

Yellow (37%)

Black (22%)



Cyan (22%)

Magenta (46%)

Yellow (51%)

Brightness & Saturation Gradients

These gradients show how the Decimal color 13076862 changes by changing the brightness by 10 percent. The first figure shows a shift by +10% for each color and the second figure -10%.

Similar to the brightness gradients but the following saturation gradients show a change of the Decimal color 13076862 by changing the saturation by 10% instead.

 13076862

 13076862

16777215

 11235173

 16760755

 9393997

 16767950

 7618358

 16775146

 5908513

 4264459

 2752512

 0

 13076862

 13076862

 13072490

 13081234

 13068118

 13085606

 13063746

 13089978

 13059374

 13094350

 13055003

 13098722

 13050887

 13102837

 13049344

 13107199

Harmonies

Analogous

The Analogous color harmony consists of three colors that are next to each other on the color wheel.



13076117



13076862



12292205

Triad

The Triadic color harmony groups three colors that are evenly spaced from another and form a triangle on the color wheel.



13076862



7316611



8362440

Complementary

The Complementary color scheme is a pair of colors which are on the opposite of each other on the color wheel.



13076862



8305863

Split Complementary

Split-complementary colors differ from the complementary color scheme. The scheme consists of three colors, the original color and two neighbors of the complement color.



6136003



13076862



5678747

Square

The Square scheme is like the rectangle color scheme, but the four colors are evenly spaced on the color wheel.



13076862



9150320



5023155



10588608

Rectangle

The Rectangle color scheme consists of four colors that form a rectangle on the color wheel.



13076862



11375976



5023155



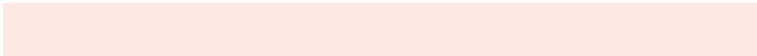
7576776

Sweetspot

The Sweet Spot groups the original color and five complimentary colors.



13076862



16771043



13074108



8417647



0



8421504

Same Dimension

The Same Dimension uses a secret algorithm to generate beautiful new colors.



13076862



16752783



13086078



6511450



10688768



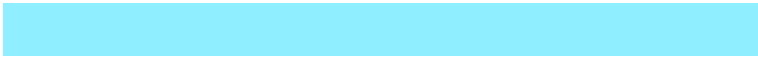
2360576

Inverse Universe

The Inverse Universe completely reimagines the original color for something new.



8305863



9432831



8296647



5923427



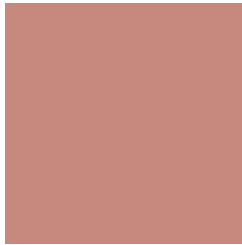
35747



7716

Previews

White Background



This preview shows how the Decimal color 13076862 looks on a white background.

Color Contrast Check

Large Text (above 18pt) WCAG AA × Fail

Any Text WCAG AA × Fail

Large Text (above 18pt) WCAG AAA × Fail

Any Text WCAG AAA × Fail

Black Background



This preview shows how the Decimal color 13076862 looks on a black background.

Color Contrast Check

Large Text (above 18pt) WCAG AA ✓ Pass

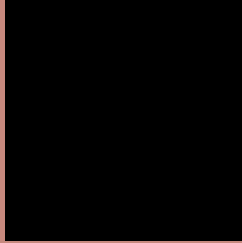
Any Text WCAG AA ✓ Pass

Large Text (above 18pt) WCAG AAA ✓ Pass

Any Text WCAG AAA ✓ Pass

If you want to check with other color combinations, try the [Color Contrast Checker](#).

Decimal 13076862 Background



This preview shows how black text looks on a background with the Decimal color 13076862.



This preview shows how white text looks on a background with the Decimal color 13076862.

Color Blindness Simulation

Color vision deficiency is a very complex topic, and I could not describe the different causes any better than Wikipedia does, so if you want to learn more, you should check out their [article about color blindness](#).

Dichromacy



Original Color
13076862

Protanopia
10524806

Deuteranopia
11637628



Tritanopia
13207184

Trichromacy



Original Color
13076862

Protanomaly
11441027

Deuteranomaly
12160893

Tritanomaly
13141897

Monochromacy



Original Color
13076862

Achromatopsia
10132122

Achromatomaly
11179152

CSS Examples

Text

The CSS property to change the color of the text to Decimal 13076862 is called "color". The color property can be set on classes, ids or directly on the HTML element.

This example shows how text in the color #C7897E looks like.

```
.text, #text, p{  
    color:#C7897E  
}
```

If you want to add a text shadow in that color use the text-shadow property, you can generate a text shadow directly with our [CSS Text Shadow Generator](#).

Here you see how black text with a 4 pixel #C7897E colored shadow looks like.

```
.shadow{ text-shadow: 4px 4px 2px #C7897E
}
```

Border

The CSS property to change the border of an element to Decimal 13076862 is called "border". The border property can be set on classes, ids or directly on the HTML element.

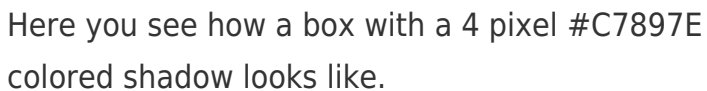
This example shows the color as border, it can be applied via the CSS property "border" or "border-color".

```
.border, #border, table{ border:4px solid
#C7897E }
```

If only the border color should be changed use the property border-color.

```
.border{ border-color:#C7897E }
```

If you want to add a box shadow in that color use:



Here you see how a box with a 4 pixel #C7897E colored shadow looks like.

```
.boxshadow{ -moz-box-shadow:4px 4px 4px  
4px #C7897E; -webkit-box-shadow:4px 4px  
4px 4px #C7897E; box-shadow:4px 4px 4px  
4px #C7897E }
```

Background

The CSS property to change the background color of an element to Decimal 13076862 is called "background". The background property can be set on classes, ids or directly on the HTML element.

```
.background, #background, body{  
background:#C7897E }
```

If only the background color should be changed can be used:

```
.background{ background-color:#C7897E }
```

This example shows the color as background, it is applied via the CSS property "background".

To optimize and compress your CSS code, you can use our [online CSS compressor and optimizer](#) based on csstidy. If you want to create a linear or radial gradient as background or border, check our [CSS Gradient Generator](#).

Hey! You found this booklet interesting? Support Converting Colors with the new Membership Option!

The pro membership hides all ads, plus gives you double the colors in the color bucket, and more awesome pro features!

[Learn more, Memberships starting at \\$2.50/m!](#)

**Follow me
on Twitter!**

@ConvertingColor