

Converting Colors

Decimal(13077387)

Have a look what the booklet for
Decimal(13077387) contains.

Decimal(13077387)	3
<i>Conversions</i>	4
<i>Details</i>	6
<i>Harmonies</i>	11
<i>Previews</i>	23
<i>Color Blindness Simulation</i>	26
<i>CSS Examples</i>	29

Color

Decimal(13077387)

Conversions

Conversions Part 1

Format	Color
Hex	C78B8B
RGB	199, 139, 139
RGB Percent	78%, 55%, 55%
CMY	0.2196, 0.4549, 0.4549
CMYK	0.00, 0.30, 0.30, 0.22
HSL	0°, 35%, 66%
HSV	0°, 30%, 78%
XYZ	37.4460, 32.4714, 28.7201
YIQ	156.9400, 35.7600, 12.7200

Conversions

Conversions Part 2

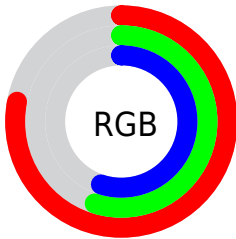
Format	Color
R _Y B	199, 139, 139
Decimal	13077387
CIE Lab	63.73, 22.88, 9.20
CIE LCh	64, 24.659, 21.913
Yxy	32.4714, 0.3796, 0.3292
Android (android.graphics.Color)	4291267467 (0xFFC78B8B)
YUV	156.9400, -8.8444, 36.8866
Hunter-Lab	56.9837, 17.5772, 10.0061

Details

The Decimal color **13077387** is a light color, and the websafe version is hex **CC9999**. A complement of this color would be **9160647**, and the grayscale version is **10329501**.

A 20% lighter version of the original color is **16761280**, and **9459801** is the 20% darker color. If you saturate the color by 10%, you get **13072247**, and if you desaturate by 10%, it is **13082527**.

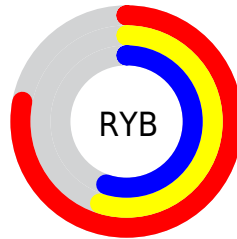
Distribution



Red (78%)

Green (55%)

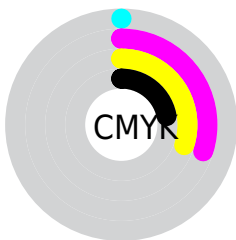
Blue (55%)



Red (78%)

Yellow (55%)

Blue (55%)

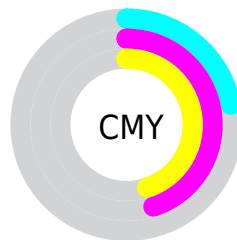


Cyan (0%)

Magenta (30%)

Yellow (30%)

Black (22%)



Cyan (22%)

Magenta (45%)

Yellow (45%)

Brightness & Saturation Gradients

These gradients show how the Decimal color 13077387 changes by changing the brightness by 10 percent. The first figure shows a shift by +10% for each color and the second figure -10%.


Similar to the brightness gradients but the following saturation gradients show a change of the Decimal color 13077387 by changing the saturation by 10% instead.

 13077387  13077387

16777215  11235698

 16761280  9459801

 16768476  7684162

 16775929  5974316

 4330263

 2818048

 0

 13077387  13077387

 13072247  13082527

 13067107

 13087667

 13061967

 13092807

 13056827

 13097947

 13051687

 13103087

 13046804

 13107199

 13041664

Harmonies

Analogous

The Analogous color harmony consists of three colors that are next to each other on the color wheel.



12749729



13077387



12619897

Triad

The Triadic color harmony groups three colors that are evenly spaced from another and form a triangle on the color wheel.



13077387



8430463



7839429

Complementary

The Complementary color scheme is a pair of colors which are on the opposite of each other on the color wheel.



13077387



9160647

Split Complementary

Split-complementary colors differ from the complementary color scheme. The scheme consists of three colors, the original color and two neighbors of the complement color.



6202556



13077387



6858387

Square

The Square scheme is like the rectangle color scheme, but the four colors are evenly spaced on the color wheel.



13077387



10067569



5875370



9869251

Rectangle

The Rectangle color scheme consists of four colors that form a rectangle on the color wheel.



13077387



11965553



5875370



7184580

Sweetspot

The Sweet Spot groups the original color and five complimentary colors.



13077387



16771304



13077447



8417649



0



8421504

Same Dimension

The Same Dimension uses a secret algorithm to generate beautiful new colors.



13077387



16753571



13085067



6511194



10682368



2359296

Inverse Universe

The Inverse Universe completely reimagines the original color for something new.



9160647



10747903



9152967



5923683



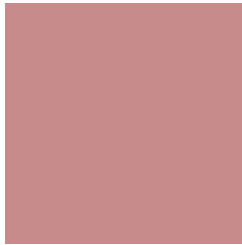
41891



9252

Previews

White Background



This preview shows how the Decimal color 13077387 looks on a white background.

Color Contrast Check

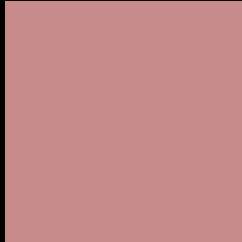
Large Text (above 18pt) WCAG AA × Fail

Any Text WCAG AA × Fail

Large Text (above 18pt) WCAG AAA × Fail

Any Text WCAG AAA × Fail

Black Background



This preview shows how the Decimal color 13077387 looks on a black background.

Color Contrast Check

Large Text (above 18pt) WCAG AA ✓ Pass

Any Text WCAG AA ✓ Pass

Large Text (above 18pt) WCAG AAA ✓ Pass

Any Text WCAG AAA ✓ Pass

If you want to check with other color combinations, try the [Color Contrast Checker](#).

Decimal 13077387 Background



This preview shows how black text looks on a background with the Decimal color 13077387.




This preview shows how white text looks on a background with the Decimal color 13077387.

Color Blindness Simulation

Color vision deficiency is a very complex topic, and I could not describe the different causes any better than Wikipedia does, so if you want to learn more, you should check out their [article about color blindness](#).

Dichromacy





Tritanopia
13142676

Trichromacy



Original Color

13077387

Protanomaly

11441552

Deuteranomaly

12095882

Tritanomaly

13142673

Monochromacy



Original Color

13077387

Achromatopsia

10329501

Achromatomaly

11310742

CSS Examples

Text

The CSS property to change the color of the text to Decimal 13077387 is called "color". The color property can be set on classes, ids or directly on the HTML element.

This example shows how text in the color #C78B8B looks like.

```
.text, #text, p{  
    color:#C78B8B  
}
```

If you want to add a text shadow in that color use the text-shadow property, you can generate a text shadow directly with our [CSS Text Shadow Generator](#).

Here you see how black text with a 4 pixel #C78B8B colored shadow looks like.

```
.shadow{ text-shadow: 4px 4px 2px #C78B8B
}
```

Border

The CSS property to change the border of an element to Decimal 13077387 is called "border". The border property can be set on classes, ids or directly on the HTML element.

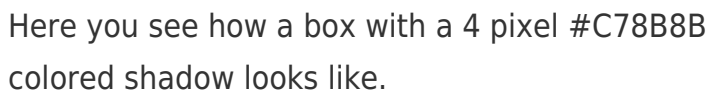
This example shows the color as border, it can be applied via the CSS property "border" or "border-color".

```
.border, #border, table{ border:4px solid
#C78B8B }
```

If only the border color should be changed use the property `border-color`.

```
.border{ border-color:#C78B8B }
```

If you want to add a box shadow in that color use:



Here you see how a box with a 4 pixel #C78B8B colored shadow looks like.

```
.boxshadow{ -moz-box-shadow:4px 4px 4px  
4px #C78B8B; -webkit-box-shadow:4px 4px  
4px 4px #C78B8B; box-shadow:4px 4px 4px  
4px #C78B8B }
```

Background

The CSS property to change the background color of an element to Decimal 13077387 is called "background". The background property can be set on classes, ids or directly on the HTML element.

```
.background, #background, body{  
background:#C78B8B }
```

If only the background color should be changed can be used:

```
.background{ background-color:#C78B8B }
```

This example shows the color as background, it is applied via the CSS property "background".

To optimize and compress your CSS code, you can use our [online CSS compressor and optimizer](#) based on csstidy. If you want to create a linear or radial gradient as background or border, check our [CSS Gradient Generator](#).

Hey! You found this booklet interesting? Support Converting Colors with the new Membership Option!

The pro membership hides all ads, plus gives you double the colors in the color bucket, and more awesome pro features!

[Learn more, Memberships starting at \\$2.50/m!](#)

**Follow me
on Twitter!**

@ConvertingColor